



PROCUREMENT SERVICES

**CITY OF SURREY, SURREY CITY HALL
13450 – 104 Avenue, Surrey, B.C., V3T 1V8
Tel: 604-590-7274
E-mail: purchasing@surrey.ca**

ADDENDUM No. 7

REQUEST FOR QUOTATIONS No.: 1220-040-2024-045

TITLE: TENANT IMPROVEMENTS OF BRIDGEVIEW
CHILDCARE CENTRE

ADDENDUM ISSUE DATE: SEPTEMBER 13, 2024

CLOSING DATE: PREFER TO RECEIVE SUBMISSION ON OR
BEFORE SEPTEMBER 13, 2024

INFORMATION FOR CONTRACTORS

Contractors are advised that Addendum No. 7 to 1220-040-2024-045 is hereby issued by the City. This addendum shall form part of the contract documents and is to be read, interpreted and coordinated with all other parts. The following information is provided to answer questions raised by Contractors for the above-named project, to the extent referenced and shall become a part thereof. No consideration will be allowed for extras due to the Contractors or any sub-contractor not being familiar with this addendum. This Addendum No. 7 contains twelve (12) pages.

CLARIFICATIONS:

1. Drawings contained in City of Surrey Addendum No. 6 are blurry. Addendum No. 7 is hereby issued with revised Drawings.

For clarity, information contained in the Drawings issued for Addendum No. 6 are the same as information in this Addendum No. 7.

Please see revised Drawings on this Addendum #7:

a) SCHEDULE B – APPENDIX 2-A – CONTRACT DRAWINGS (PROJECT)


Add:

- Addendum #1 Schedule B - Appendix 2-A Contract Drawings [Electrical]
- Addendum #2 Schedule B - Appendix 2-A Contract Drawings [Electrical]

All Addenda will become part of the Contract Documents.

- END OF ADDENDUM -

Electrical Tender Addendum No. 01

PROJECT NAME:	City of Surrey Bridgeview Daycare	PROJECT No: 0223.0752
		CONTRACT: ELECTRICAL
ATTN:	Ana Cadena	DATE: August 21, 2024
TO:	StudioHub Architects Ltd.	PAGE: 1 of 8
ISSUED BY:	Tim Ng	
PROFESSIONAL'S SEAL AND SIGNATURE:	NOTE:	
 <p style="text-align: center;">Permit# 1000135 2024-08-21</p>	<p>The following addendum supersedes information contained in drawings and specifications issued for the project to the extent referenced. This addendum forms part of the contract documents and is subject to all of the conditions set out in the contract conditions.</p> <p><input checked="" type="checkbox"/> No seal and signature required</p>	
H:\PROJECTS\2023\0223.0752\TENDER\ADDENDA\		

- 1. Sheet E0.0 – Cover Page, Symbol Legend and Key Plan**
 - .1 Added a new symbol legend “Key Switch”.
- 2. Sheet E1.0 & E2.0 – Existing and Revised Lighting and Life Safety Layouts**
 - .1 Replace existing heat detector with new smoke detector as required.
- 3. Sheet E1.1 – Existing Power and Systems Layout**
 - .1 Revised “RE” Access control set to “R”.
- 4. Sheet E2.1 – Revised Power and Systems Layout**
 - .1 Added (1) set of ADO for 106B NAP.
 - .2 Deleted (1) set of ADO in 105 universal WC.
 - .3 Deleted (1) set of access control in MFS staff room 103.
 - .4 Revised (1) magnetic lock to (1) electric strike and (1) door contact for each pocket door in 101 and 102A.

Electrical Addendum No. 01

5. Sheet E3.0 – Details and schedules

- .1 Revised detail drawing for electric strike for pocket door.
- .2 Added detail drawing for ADO infrastructure.

BRIDGEVIEW METIS DAYCARE

11475 126A ST, SURREY, BC, V3V 5G8

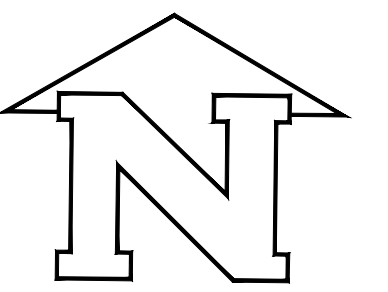
ISSUED FOR TENDER

2ND AUGUST, 2024

Contractor must check and verify all dimensions and conditions on site and report any discrepancies to designer and/or engineer prior to proceeding with work

DO NOT SCALE DRAWINGS

All drawings, specifications and related documents are the copyright property of AES Engineering Ltd. Reproduction of any of the aforementioned documents in whole or in part is not permitted without the written permission of AES Engineering Ltd.

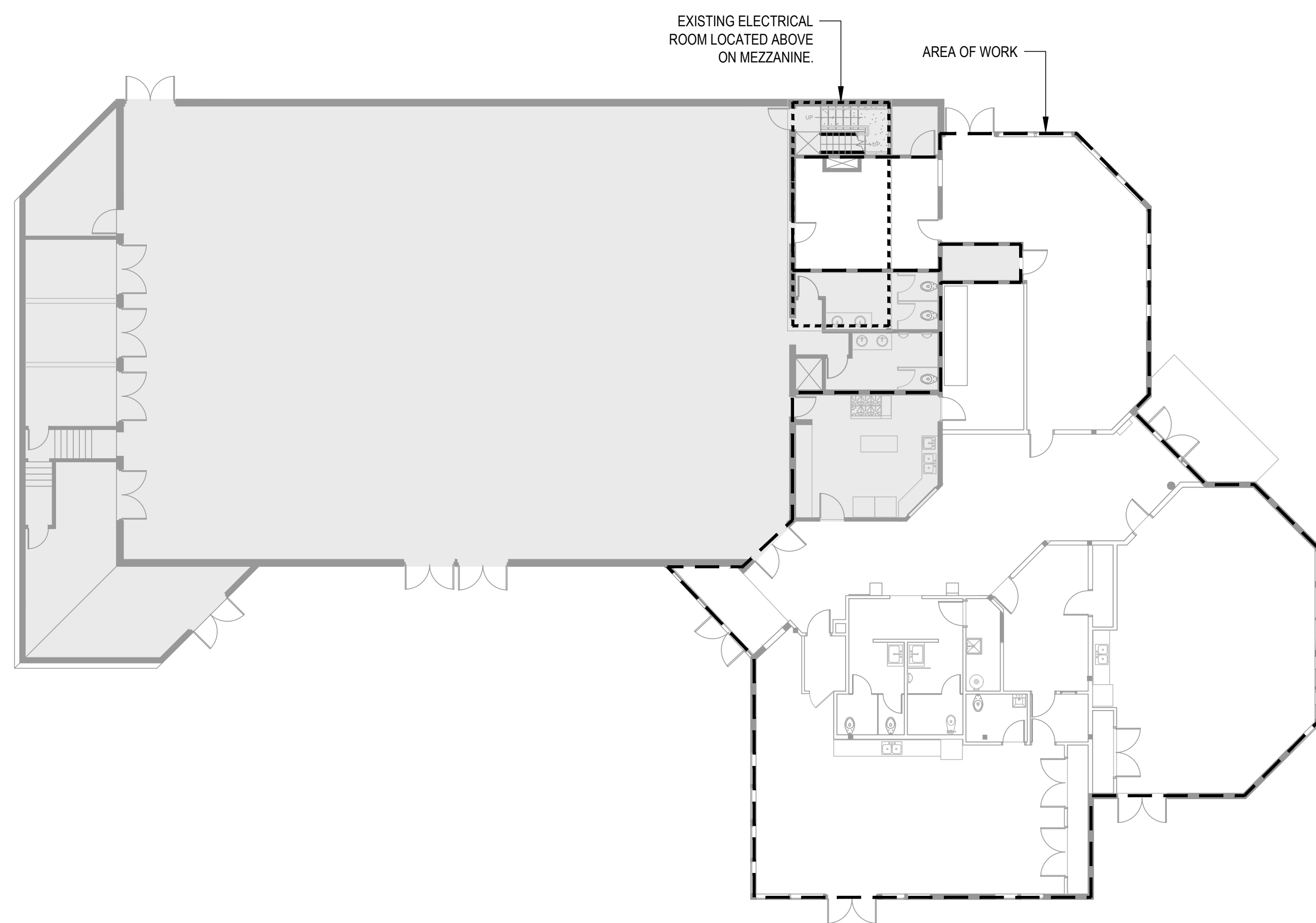


PROJECT NORTH

PRODUCTION DRAWINGS BY:



DRAWING LIST	
E0.0	COVER PAGE, SYMBOL LEGEND AND KEY PLAN
E1.0	EXISTING LIGHTING AND LIFE SAFETY LAYOUT
E1.1	EXISTING POWER AND SYSTEMS LAYOUT
E2.0	REVISED LIGHTING AND LIFE SAFETY LAYOUT
E2.1	REVISED POWER AND SYSTEMS LAYOUT
E3.0	DETAILS AND SCHEDULES
E4.0	ELECTRICAL SPECIFICATIONS
E4.1	COMMUNICATION SPECIFICATIONS



1 SITE KEY PLAN
E000 NTS

ELECTRICAL SYMBOL LEGEND			
LIGHTING	POWER	FIRE ALARM	COMMUNICATIONS
			ABBREVIATIONS
			AC ABOVE COUNTER
			D INDICATES CIRCUIT TO BE DEDICATED
		SECURITY (ROUGH-IN ONLY)	
			EM INDICATES CONNECTED TO EMERGENCY POWER CIRCUIT
			E EXISTING DEVICE TO BE REMAIN
			R EXISTING DEVICE TO BE REMOVED
			RR EXISTING DEVICE TO BE REMOVED AND RELOCATED
			RE EXISTING DEVICE IN NEW RELOCATED POSITION
			RP EXISTING DEVICE TO BE REPLACED WITH NEW
			TL TWIST LOCK RECEPTACLE
			WP WEATHER PROOF
			HK HOUSEKEEPING
			AED AUTOMATED EXTERNAL DEFIBRILLATOR
			NOTE EQUIPMENT SHOWN DOTTED IS EXISTING AND TO REMAIN UNLESS INDICATED OTHERWISE

NOTE: NOT ALL SYMBOLS SHOWN IN LEGEND ARE USED

REV	DESCRIPTION	DATE
6	ISSUED FOR TENDER ADDENDUM #1	16/08/2024
5	ISSUED FOR TENDER	02/08/2024
4	ISSUED FOR REVIEW	28/05/2024
3	ISSUED FOR PERMIT RE-SUBMISSION	22/04/2024
2	ISSUED FOR PERMIT	06/03/2024
1	ISSUED FOR COORDINATION	16/02/2024

PROJECT NAME:

BRIDGEVIEW METIS DAYCARE

11475 126A St
Surrey, BC, V3V 5G8

DRAWING TITLE:

COVER PAGE, SYMBOL LEGEND AND KEY PLAN

DATE:	AUG 2024
SCALE:	AS NOTED
DRAWN BY:	TN
CHECKED BY:	KS
JOB NUMBER:	0223.0752

DRAWING NUMBER:

E0.0

GENERAL NOTES

- A. EXISTING DOUGLAS LIGHTING RELAY CONTROL MASTER PANEL LOCATED IN THE MEZZANINE ELECTRICAL ROOM SHALL REMAIN.

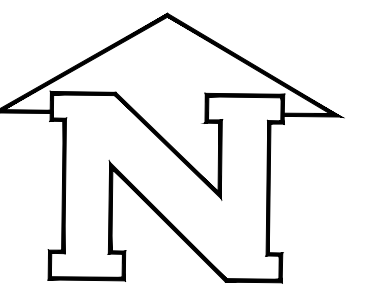
DRAWING KEY NOTES

- 1. EXISTING DOUGLAS LIGHTING RELAY PANEL 'A' C/W WLC-3150 LIGHTING CONTROLLER TO REMAIN.
- 2. EXISTING DOUGLAS LIGHTING RELAY PANEL 'C' TO REMAIN.
- 3. THIS CONTRACTOR TO PATCH AND REPAIR THE CEILING AFTER REMOVAL OF LIGHTS W/ FIRE RATED GWB AND FIRE PENETRATION TO MAINTAIN THE EXISTING FIRE RATING.
- 4. THIS CONTRACTOR TO RETROFIT EXISTING FLUORESCENT T8 LAMPS AND BALLAST WITH NEW LED PHILIPS INSTANTFIT (579045) AND ELECTRONIC BALLAST.

Contractor must check and verify all dimensions and conditions on site and report any discrepancies to designer and/or engineer prior to proceeding with work

DO NOT SCALE DRAWINGS

All drawings, specifications and related documents are the copyright property of AES Engineering Ltd. Reproduction of any of the aforementioned documents in whole or in part is not permitted without the written permission of AES Engineering Ltd.

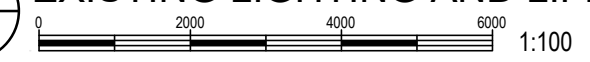


PROJECT NORTH

PRODUCTION DRAWINGS BY:



1 EXISTING LIGHTING AND LIFE SAFETY LAYOUT
E1.0



6	ISSUED FOR TENDER ADDENDUM #1	16/08/2024
5	ISSUED FOR TENDER	02/08/2024
4	ISSUED FOR REVIEW	28/05/2024
3	ISSUED FOR PERMIT RE-SUBMISSION	22/04/2024
2	ISSUED FOR PERMIT	06/03/2024
1	ISSUED FOR COORDINATION	16/02/2024

REV	DESCRIPTION	DATE
-----	-------------	------

PROJECT NAME:

BRIDGEVIEW METIS DAYCARE

11475 126A St
Surrey, BC, V3V 5G8

DRAWING TITLE:

EXISTING LIGHTING AND LIFE SAFETY LAYOUT

DATE:	AUG 2024
SCALE:	AS NOTED
DRAWN BY:	TN
CHECKED BY:	KS
JOB NUMBER:	0223.0752

DRAWING NUMBER:

E1.0

GENERAL NOTES

- A. EXISTING ELECTRICAL AND COMMUNICATION EQUIPMENT LOCATED IN THE MEZZANINE ELECTRICAL ROOM SHALL REMAIN.
- B. THIS CONTRACTOR SHALL REPLACE ALL EXISTING RECEPTACLES WITH NEW TAMPER RESISTANT TYPE CW NEW WALLPLATE.
- C. CONTRACTOR TO REMOVE THE POWER FOR MECHANICAL EQUIPMENTS WHICH ARE SHOWN AS DEMOLITION ON MECHANICAL DRAWINGS.

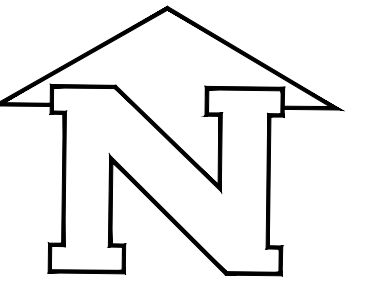
DRAWING KEY NOTES

- 1. EXISTING ELECTRICAL PANEL 'C', 225A RATED, 120/208V, 3PH, 4W, 72 CCT., TO REMAIN. THIS PANEL IS FED BY 150A 3P BREAKER IN EXISTING 600A MAIN SWITCHBOARD LOCATED IN THE ELECTRICAL ROOM ON MEZZANINE LEVEL.
- 2. EXISTING ELECTRICAL PANEL 'A', 225A RATED, 120/208V, 3PH, 4W, 72 CCT., TO REMAIN. THIS PANEL IS FED BY 150A 3P BREAKER IN EXISTING 600A MAIN SWITCHBOARD LOCATED IN THE ELECTRICAL ROOM ON MEZZANINE LEVEL.
- 3. EXISTING SENTINEL ALARM PANEL TO REMAIN.
- 4. EXISTING COMMUNICATIONS EQUIPMENT AND POWER IN COMM ROOM TO REMAIN.
- 5. THIS CONTRACTOR SHALL RETAIN KEYSTONE JACKS CW DATA CABLING AND PROVIDE NEW BLANK WALLPLATE FOR ALL EXISTING DATA WALLPLATES ON THE BUILDING PERIMETER WALL.
- 6. DEMO EXISTING FORCE FLOW HEATER.

Contractor must check and verify all dimensions and conditions on site and report any discrepancies to designer and/or engineer prior to proceeding with work

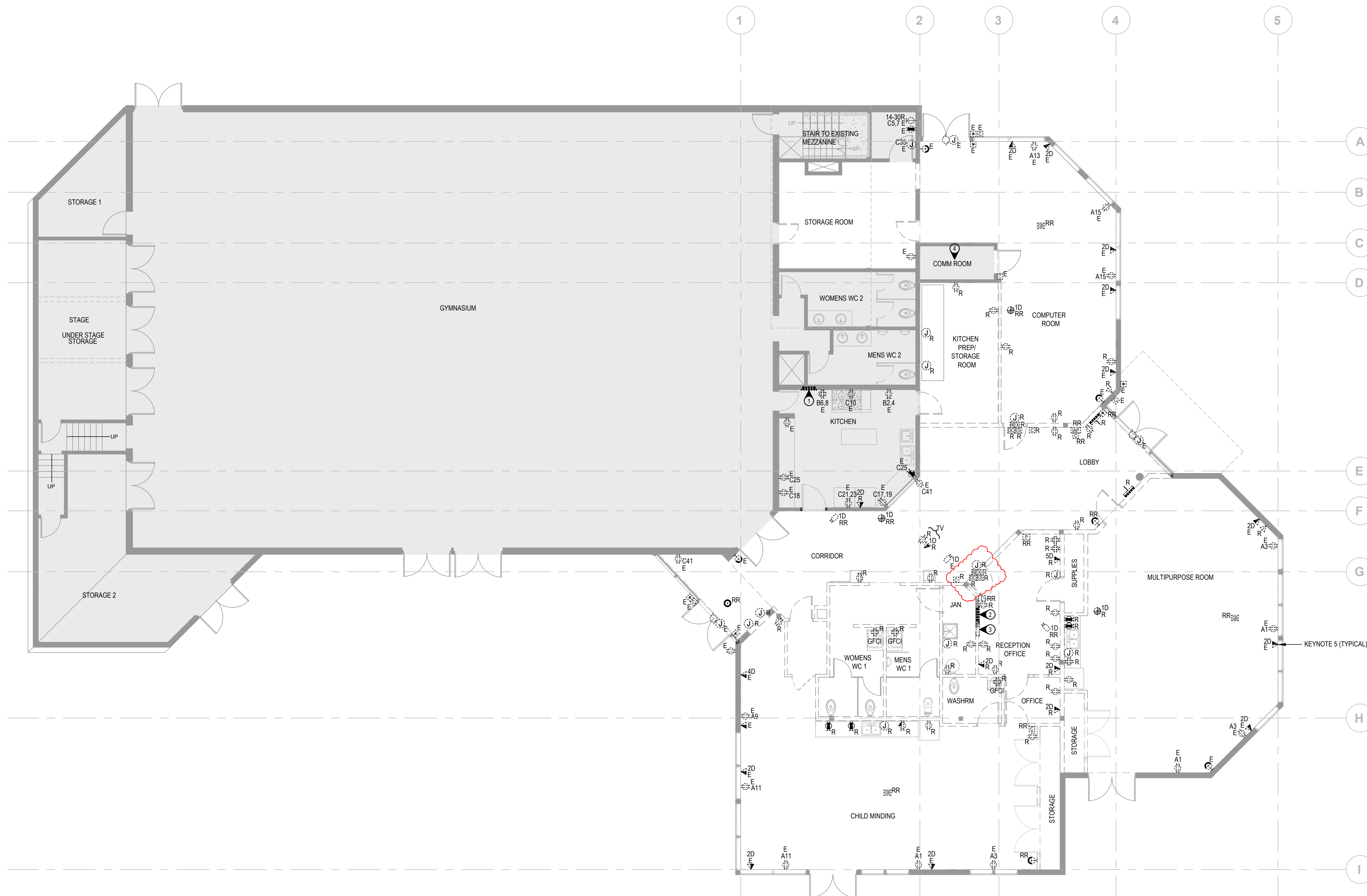
DO NOT SCALE DRAWINGS

All drawings, specifications and related documents are the copyright property of AES Engineering Ltd. Reproduction of any of the aforementioned documents in whole or in part is not permitted without the written permission of AES Engineering Ltd.



PROJECT NORTH

PRODUCTION DRAWINGS BY:



1 EXISTING POWER AND SYSTEMS LAYOUT
E1.1 1:100

6	ISSUED FOR TENDER ADDENDUM #1	16/08/2024
5	ISSUED FOR TENDER	02/08/2024
4	ISSUED FOR REVIEW	28/05/2024
3	ISSUED FOR PERMIT RE-SUBMISSION	22/04/2024
2	ISSUED FOR PERMIT	06/03/2024
1	ISSUED FOR COORDINATION	16/02/2024

REV	DESCRIPTION	DATE
-----	-------------	------

PROJECT NAME:

BRIDGEVIEW METIS DAYCARE

11475 126A St
 Surrey, BC, V3V 5G8

DRAWING TITLE:

EXISTING POWER AND SYSTEMS LAYOUT

DATE:	AUG 2024
SCALE:	AS NOTED
DRAWN BY:	TN
CHECKED BY:	KS
JOB NUMBER:	0223.0752

DRAWING NUMBER:

E1.1

GENERAL NOTES

- A. NEW CARBON MONOXIDE DETECTORS SHALL BE SYSTEM SENSOR CO1224 SERIES CO1224TR AND TIED TO THE FIRE ALARM SYSTEM.
- B. COORDINATE WITH INTERIOR DESIGNER FOR EXACT LOCATIONS OF EXIT SIGNAGES PRIOR TO ROUGH-IN.

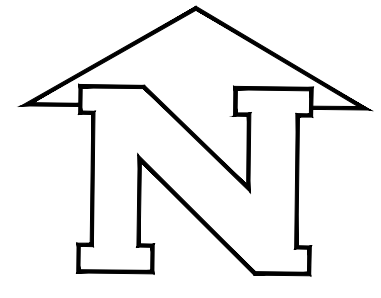
DRAWING KEY NOTES

- 1. 3-WAY CONTROL FOR CORRIDOR LIGHTS.
- 2. NEW LIGHT WIRING LIGHTING CONTROL PANEL REFER TO PLANS FOR LOW-VOLTAGE SYMBOLS.

Contractor must check and verify all dimensions and conditions on site and report any discrepancies to designer and/or engineer prior to proceeding with work

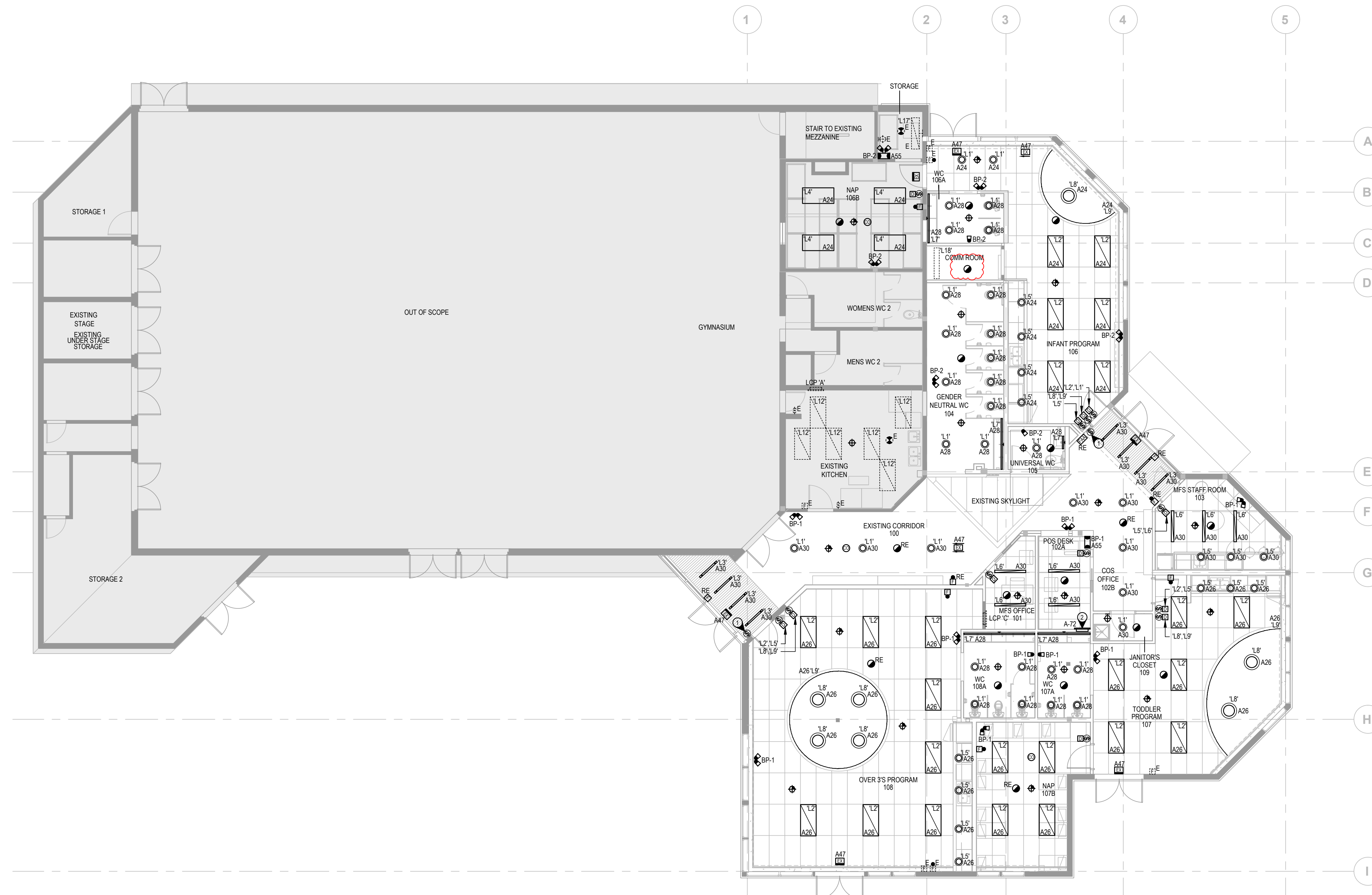
DO NOT SCALE DRAWINGS

All drawings, specifications and related documents are the copyright property of AES Engineering Ltd. Reproduction of any of the aforementioned documents in whole or in part is not permitted without the written permission of AES Engineering Ltd.



PROJECT NORTH

PRODUCTION DRAWINGS BY:



1 REVISED LIGHTING AND LIFE SAFETY LAYOUT
E2.0

REV	DESCRIPTION	DATE
7	ISSUED FOR PERMIT AMENDMENT	16/08/2024
6	ISSUED FOR TENDER ADDENDUM #1	16/08/2024
5	ISSUED FOR TENDER	02/08/2024
4	ISSUED FOR REVIEW	28/05/2024
3	ISSUED FOR PERMIT RE-SUBMISSION	22/04/2024
2	ISSUED FOR PERMIT	06/03/2024
1	ISSUED FOR COORDINATION	16/02/2024

PROJECT NAME:

BRIDGEVIEW METIS DAYCARE

11475 126A St
 Surrey, BC, V3V 5G8

DRAWING TITLE:

REVISED LIGHTING AND LIFE SAFETY LAYOUT

DATE:	AUG 2024
SCALE:	AS NOTED
DRAWN BY:	TN
CHECKED BY:	KS
JOB NUMBER:	0223.0752

DRAWING NUMBER:

E2.0

GENERAL NOTES

- ALL NEW RECEPTACLES SHALL BE TAMPER RESISTANT TYPE.
- NEW DATA CABLING IN MFS OFFICE 101 SHALL TERMINATE TO NEW SERVER RACK IN MFS OFFICE. NEW DATA CABLING IN COS OFFICE 102B SHALL TERMINATE TO THE EXISTING SERVER RACK IN COMM ROOM.
- DATA DROPS FOR CCTV AND WIFI ACCESS POINT SHALL TERMINATE TO THE EXISTING SERVER RACK IN COMM ROOM.
- THIS CONTRACTOR TO PROVIDE 3/4" CONDUIT INFRASTRUCTURE C/W PULL STRING FOR THE INTRUSION SYSTEM INCLUDING GLASS BREAKER SENSORS, MOTION DETECTORS, DOOR ACCESS CONTROLS AND CONTROL PANEL, LOCK DOWN SYSTEM, PANIC ALARM SYSTEM AND SECURITY SYSTEM.
- CONTRACTOR TO UPDATE THE BREAKER LABELS TO "SPARE" FOR EXISTING CIRCUITS WHICH IS NO LONGER TO PROVIDE ANY POWER AFTER DEMOLITION.

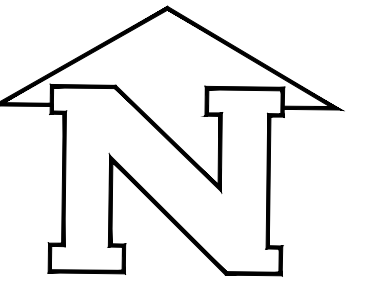
DRAWING KEY NOTES

- SUPPLY AND INSTALL A NEW WALL-MOUNTED SERVER RACK EQUAL TO PANDUIT PZVMC12W WALL MOUNT CABINET, 12RU CU RACK PDU P8E14M. ENSURE RACK IS GROUNDED AND PROVIDE 3/4" THICK PLYWOOD BACKBOARD.
- MECHANICAL UNITS LOCATED ON ROOF. CONTRACTOR TO COORDINATE EXACT LOCATION WITH MECHANICAL CONTRACTOR ON SITE. CONTRACTOR TO SUPPLY AND INSTALL WEATHERPROOF GFCI RECEPTACLE C/W "WHILE-IN-USE" COVER BESIDE EACH UNIT.
- THIS CONTRACTOR TO PROVIDE 2X2" CONDUITS C/W TWO (2) CAT6A BACKBONE FOR THE CONNECTION BETWEEN THE NEW SERVER RACK IN MFS OFFICE AND THE EXISTING SERVER RACK IN COMM ROOM.
- PROVIDE AN EMERGENCY CALL SYSTEM (CAMDEN CX-WEC10K2), COORDINATE WITH INTERIOR DESIGNER FOR EXACT LOCATION OF EMERGENCY PUSH BUTTON PRIOR TO ROUGH-IN.

Contractor must check and verify all dimensions and conditions on site and report any discrepancies to designer and/or engineer prior to proceeding with work

DO NOT SCALE DRAWINGS

All drawings, specifications and related documents are the copyright property of AES Engineering Ltd. Reproduction of any of the aforementioned documents in whole or in part is not permitted without the written permission of AES Engineering Ltd.



PROJECT NORTH

PRODUCTION DRAWINGS BY:



1 REVISED POWER AND SYSTEMS LAYOUT
E2.1

EXISTING POWER PANEL "A" 225A(RATED), 120/208V 3P/4W

DESIGNATION	CCT. NO.			PH. NO.	CCT. NO.	BKR	DESIGNATION
	A	B	C				
SOUTH EAST RECEPTACLES*	15A	1		2	15A		NORTHEAST LIGHTS*
SOUTH EAST AND 107B NAP RECEPTACLES**	15A	3		4	15A		RECEPTION / LOBBY / WASHROOM / LIGHTS*
108A WASHROOM GFCI**	15A	5		6	15A		SOUTH LIGHTS*
107A WASHROOM GFCI**	15A	7		8	15A		SOUTHEAST LIGHTS*
CHILD MINDING RECEPTACLES*	15A	9		10	15A		SPARE
CHILD MINDING RECEPTACLES*	15A	11		12	15A		SPARE
COMPUTER / KITCHEN PREP RECEPTACLES*	15A	13		14	15A		102A POS DESK RECEPTACLES**
COMPUTER ROOM RECEPTACLES*	15A	15		16	15A		101 MOS OFFICE RECEPTACLES**
CCTV RECEPTACLE*	15A	17		18	15A		RE-CIRCULATING PUMP**
RECEPTION OFFICE RECEPTACLE*	15A	19		20	15A		WATER FOUNTAIN RECEPTACLE**
NIGHT LIGHTS / EXITS/ EM*	15A	21		22	15A		LIGHTING RELAY PANEL H*
109 JAN. CLOSET RECEPTACLES**	15A	23		24	15A		LIGHTING FOR 106 106B**
108 FRIDGE**	15A	25		26	15A		LIGHTING FOR 107 107B 108**
108 DISHWASHER**	20A	27		28	15A		LIGHTING FOR WC 104 105 106A 107A 108A**
108 COUNTERTOP GFCI**	15A	29		30	15A		LIGHTING FOR 100 101 102A 103 109**
OUTSIDE RECEPTACLE*	15A	31		32	20A		HOUSE KEEPING
108 COUNTERTOP GFCI**	15A	33		34	15A		NAP 106B RECEPTACLE
108 COUNTERTOP RECEPTACLE**	15A	35		36	15A		WC106A GFCI
108 MICROWAVE**	20A	37		38	15A		106 COUNTERTOP RECEPTACLE
101 MOS OFFICE RECEPTACLES**	15A	39		40	20A		106 MICROWAVE
SPARE	15A	41		42	15A		106 COUNTERTOP GFCI
SPARE	15A	43		44	20A		106 DISHWASHER
EAST AUTO DOOR*	15A	45		46	15A		106 COUNTERTOP GFCI
EXIT SIGN FOR EAST AREA**	15A	47		48	15A		106 FRIDGE
DOMESTIC HOT WATER TANK DHWT-1**	15A	49		50	15A		AUTOMATIC DOOR OPERATOR
WEST AUTO DOOR	15A	51		52	15A		103 COUNTERTOP RECEPTACLE
FLUSH/SINK VALVES	15A	53		54	15A		103 GFCI
EMERGENCY REMOTE HEAD	15A	55		56	30A		103 DRYER
EMERGENCY CALL SYSTEM FOR 105	15A	57		58	15A		105 HAND DRYER
EXTERIOR EVENT PLUG*	50A	59		60	15A		105 WASHER
107 DISHWASHER	20A	61		62	15A		103 FRIDGE
107 COUNTERTOP GFCI	15A	63		64	20A		106 MICROWAVE
107 MICROWAVE	20A	65		66	15A		UNIVERSAL GENDER NEUTRAL WC GFCI
107 COUNTERTOP GFCI	15A	67		68	15A		SPARE
107 FRIDGE	15A	71		72	20A		LIGHTING CONTROL PANEL

NOTED [*] IS EXISTING
NOTED [**] IS NEW

2 PANEL 'A'
E2.1 NTS

EXISTING POWER PANEL "B" 225A(RATED), 120/208V 3P/4W

DESIGNATION	CCT. NO.			PH. NO.	CCT. NO.	BKR	DESIGNATION
	A	B	C				
SPARE/OUTSIDE LIGHTS*	15A	1		2	15A		GYM WASHROOM/STORAGE/STAGE RECEPTACLE*
SPARE/OUTSIDE LIGHTS*	15A	1		2	15A		GYM WASHROOM/STORAGE/STAGE RECEPTACLE*
OUTSIDE LIGHTS/SPARE*	15A	3		4	15A		STORAGE/STAGE/RYM RECEPTACLE*
OUTSIDE LIGHTS/SPARE*	15A	3		4	15A		STORAGE/STAGE/RYM RECEPTACLE*
WEST EXTERIOR EVENT RECEPTACLE*	50A	5		6	15A		OUTSIDE WASHROOM/WATER PARK PANEL*
GYM LIGHTS*	20A	9		10	20A		MECHANICAL ROOM RECEPTACLE*
GYM LIGHTS*	20A	11		12	20A		GYM RECEPTACLES*
TRACK LIGHTS*	20A	13		14	20A		RTU4 CONV. PLUG*
TRACK LIGHTS*	20A	15		16	20A		RTU3 CONV. PLUG*
POWER BASKETBALL HOOP*	15A	17		18	15A		SPARE
GYM LIGHTS*	15A	19		20	15A		SPARE
GYM LIGHTS*	15A	21		22	15A		SPARE
CU-1	20A	23		24	20A		NLEMEXITS/STORAGE LIGHTS/MEZZANINE LIGHTS*
GFCI FOR CU-1	15A	25		26	30A		MECHANICAL ROOM HEATER*
RELAY PANEL B*	15A	27		28	30A		MECHANICAL ROOM HEATER*
POT LIGHTS*	20A	31		32	20A		CU-2
SPARE	15A	33		34	15A		SPARE/HONEYWALL FA PANEL*
SPARE	15A	35		36	15A		SPARE/HONEYWALL FA PANEL*
DDC*	15A	37		38	15A		GFCI FOR CU-2
SEWAGE CONTROL PANEL*	60A	39		40	15A		MROM FA PANEL*
	60A	41		42	15A		GYM EXT SIGNS*

NOTED [*] IS EXISTING

3 PANEL 'B'
E2.1 NTS

EXISTING POWER PANEL "C" 225A(RATED), 120/208V 3P/4W

DESIGNATION	CCT. NO.			PH. NO.	CCT. NO.	BKR	DESIGNATION
	A	B	C				
EXTERIOR EVENT RECEPTACLE NORTH*	50A	1		2	15A		COUNTER RECEPTACLE*
DRYER RECEPTACLE*	30A	3		4	15A		COUNTER RECEPTACLE*
SERVER UPS TWISTLOCK DRYER RECEPTACLE*	20A	5		6	20A		RANGE RECEPTACLE*
SERVER UPS TWISTLOCK DRYER RECEPTACLE*	20A	7		8	15A		LIGHTING RELAY PANEL C*
COUNTER RECEPTACLE*	20A	9		10	20A		SPARE IN KITCHEN CEILING*
COUNTER RECEPTACLE*	20A	13		14	15A		MICROWAVE RECEPTACLE*
FRIDGE RECEPTACLE*	15A	15		16	15A		NORTH LIGHTING*
COUNTER RECEPTACLE*	15A	17		18	15A		NIGHT LIGHTING / EM / EXITS*
FRIDGE RECEPTACLE*	15A	19		20	15A		FIDGE RECEPTACLE
COUNTER RECEPTACLE*	15A	21		22	15A		GYM WASHROOM FLUSH VALVES*
COUNTER RECEPTACLE*	20A	23		24	15A		LIGHTING RELAY PANEL C*
SERVER ROOM RECEPTACLE*	20A	25		26	15A		ACCESS CONTROL*
SERVER ROOM RECEPTACLE*	20A	27		28	15A		FAN COIL FC-1
SERVER ROOM FAN*	15A	29		30	15A		FAN COIL FC-2
SERVER ROOM RECEPTACLE*	15A	31		32	15A		ENERGY RECOVERY VENTILATOR ERV-1
SERVER ROOM RECEPTACLE*	15A	33		34	15A		ENERGY RECOVERY VENTILATOR ERV-2
WASHER RECEPTACLE*	15A	35		36	15A		WASHROOM EXHAUST FAN EF-1
SPARE**	15A	37		38	15A		EXHAUST FAN EF-2
SPARE**	15A	39		40	20A		FORCE FLOW HEATER FF-1
LOBBY RECEPTACLE*	15A	41		42	20A		FORCE FLOW HEATER FF-2
LOBBY WALL HEATER*	15A	43		44	20A		FORCE FLOW HEATER FF-3
LOBBY WALL HEATER*	15A	45		46	15A		FORCE FLOW HEATER FF-4
LOBBY WALL HEATER*	15A	47		48	15A		ELECTRIC BASEBOARD HEATER EBB-1
SPARE**	15A	49		50	15A		ELECTRIC BASEBOARD HEATER EBB-2
SPARE**	15A	51		52	15A		ELECTRIC BASEBOARD HEATER EBB-3
RECIRCULATION PUMP RP-1	15A	53		54	15A		ELECTRIC BASEBOARD HEATER EBB-4
KITCHEN DISHWASHER DW	40A	55		56	20A		ELECTRIC BASEBOARD HEATER EBB-5
EXHAUST FAN EF-3	15A	57		58	15A		
SPARE	15A	59		60	15A		
SPARE	15A	61		62	15A		
ELECTRIC BASEBOARD HEATER EBB-4	15A	63		64	15A		
ELECTRIC BASEBOARD HEATER EBB-5	15A	65		66	15A		
ELECTRIC BASEBOARD HEATER EBB-3	15A	67		68	15A		
ELECTRIC BASEBOARD HEATER EBB-4	15A	69		70	15A		
ELECTRIC BASEBOARD HEATER EBB-5	15A	71		72	15A		

NOTED [*] IS EXISTING
NOTED [**] IS NEW

4 PANEL 'C'
E2.1 NTS

REV	DESCRIPTION	DATE
6	ISSUED FOR TENDER ADDENDUM #1	16/08/2024
5	ISSUED FOR TENDER	02/08/2024
4	ISSUED FOR REVIEW	28/05/2024
3	ISSUED FOR PERMIT RE-SUBMISSION	22/04/2024
2	ISSUED FOR PERMIT	06/03/2024
1	ISSUED FOR COORDINATION	16/02/2024

PROJECT NAME:
BRIDGEVIEW METIS DAYCARE

11475 126A St
Surrey, BC, V3V 5G8

DRAWING TITLE:
REVISED POWER AND SYSTEMS LAYOUT

DATE:	AUG 2024
SCALE:	AS NOTED
DRAWN BY:	TN
CHECKED BY:	KS
JOB NUMBER:	0223.0752

DRAWING NUMBER:

E2.1

TYPE	DESCRIPTION	PRODUCT	MOUNTING	LAMP				VOLTAGE	REMARKS	NOTES
				WATTS (W)	TYPE	LED LUMENS	COLOUR			
L1	4' LED DOWN LIGHT	GOYAM EVO GENERAL ILLUMINATION ROUND DOWNLIGHT 4' EVO4 40x25 XX XX XX VOLT G21 NLT	RECESSED	25.7	LED	2580	4000K	85	120 0-10V DIMMING	
L2	4x2 LED PANEL	MARK ARCHITECTURAL LIGHTING WHISPER LED TROFFER 2x4' WHSPR 2X4 80CRI 40K 7200LM MINI VOLT SWC NLIGHT	RECESSED	57	LED	7214	4000K	80	120 0-10V DIMMING	
L3	LED LINEAR	MARK ARCHITECTURAL LIGHTING SLOT 2 PENDANT DIRECT S2PD LLP MSL3 80CRI 40K 800LM SGT MINI FLL MVOLT NLIGHT F172A	PENDANT	6.27	LED	702	4000K	80	120 0-10V DIMMING	WATT PER FT, LUMEN PER FT
L4	4x2 LED PANEL	LHONIA LIGHTING CPX LED PANEL CPX 2X4 AL07 80CRI 50WV 5WV 1M VOLT NLIGHT	SURFACE	24.9	LED	3672	4000K	80	120 0-10V DIMMING	
L5	4' LED DOWN LIGHT	GOYAM EVO GENERAL ILLUMINATION ROUND DOWNLIGHT 4' EVO4 40x25 XX XX XX VOLT G21 NLT	RECESSED	13.7	LED	1500	4000K	85	120 0-10V DIMMING	1
L6	LED LINEAR	MARK ARCHITECTURAL LIGHTING SLOT 4 RECESSED LINEAR SL4L LOP 4FT FLP FL 80CRI 40K 800LM MINI 120 NLIGHT	RECESSED	8	LED	734	4000K	80	120 0-10V DIMMING	WATT PER FT, LUMEN PER FT
L7	LED LINEAR	MARK ARCHITECTURAL LIGHTING SLOT 2 WALL DIRECT S2WD LLP XFT 80CRI 40K 800LM SGT MINI FLL MVOLT NLIGHT	SURFACE	4.88	LED	547	4000K	80	120 0-10V DIMMING	WATT PER FT, LUMEN PER FT LENGTH TO SUIT
L8	LED PENDANT CIRCULAR	MARK ARCHITECTURAL LIGHTING MAGELLAN PENDANT MGLR 24IN FL 80CRI 40K 5000LM MINI FLL MVOLT FLT XX NLIGHT	RECESSED	49	LED	5000	4000K	80	120 0-10V DIMMING	WATT PER FT, LUMEN PER FT LENGTH TO SUIT
L9	LED STRIP LIGHT	VEROBOARD VBD 2020-SFD-W + VDF 5-2835-4000-168-24-NS-10	COVE	4.2	LED	500	4000K	80	120 0-10V DIMMING	3
EK	EDGE/LT GREEN RUNNING MAN EXIT SIGN	AIMLITE RPELU-M-WHT-BAT	RECESSED	2.5	LED	-	-	-	120	SELF-POWERED FOR 90 MINUTES
RH	LED REMOTE HEADS	AIMLITE RMSM-REFER TO PLANS-12-24V-6W-LA-WHT	SURFACE	6	LED	-	-	-	12-24	
BP-#	12-VOLT EMERGENCY LED BATTERY KIT	AIMLITE EBST-12-XX-REFER TO PLANS-6WLA-WHT-NLC	CEILING/WALL MOUNT		LED	-	-	-	120-347	2

1 LUMINAIRE SCHEDULE
E3.0 NTS

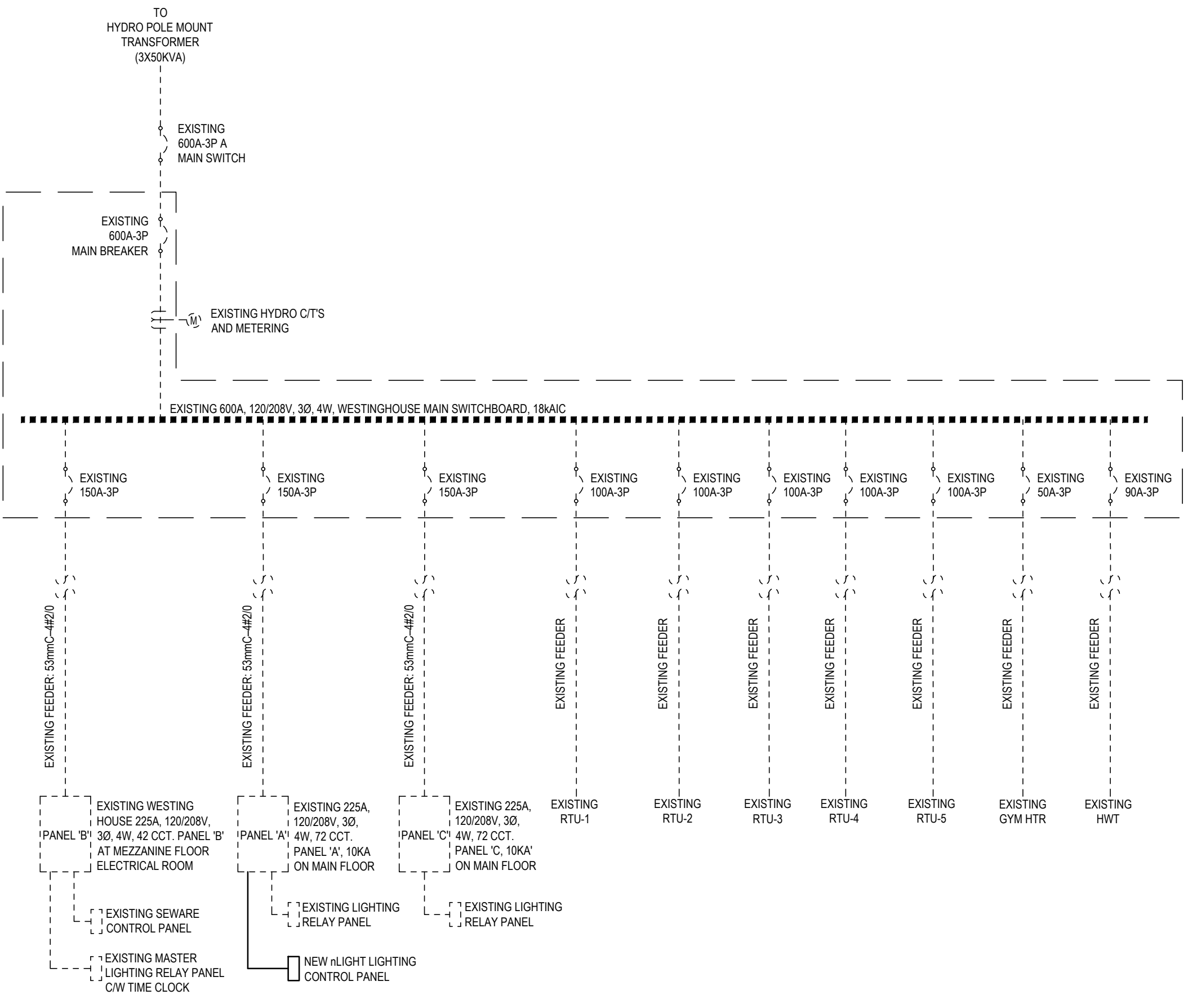
UNIT No.	UNIT DESCRIPTION	UNIT LOCATION	V	Ø	LOAD			A	KVA	BREAKER	FEEDER	CONDUIT	PANEL	STARTER	DISC.	CONTROL	KEY NOTES
					MCA	FLA	KW										
FC-1	FAN COIL	REFER TO POWER PLAN	208	1	9.8			7.84	1.63	15	2c 14	21mm	C	INT	-	-	TSTAT M M M 1.2
FC-2	FAN COIL	REFER TO POWER PLAN	208	1	9.8			7.84	1.63	15	2c 14	21mm	C	INT	-	-	TSTAT M M M 1.2
CU-1	CONDENSING UNIT	REFER TO POWER PLAN	208	1	10.9			8.72	1.81	20	2c 14	21mm	B	INT	-	-	TSTAT M M M 1.2
CU-2	CONDENSING UNIT	REFER TO POWER PLAN	208	1	10.9			8.72	1.81	20	2c 14	21mm	B	INT	-	-	TSTAT M M M 1.2
ERV-1	ENERGY RECOVERY VENTILATOR	REFER TO POWER PLAN	120	1		0.263		2.19	0.26	15	2c 14	21mm	C	INT	-	-	TC M E E 1.2
ERV-2	ENERGY RECOVERY VENTILATOR	REFER TO POWER PLAN	120	1		0.263		2.19	0.26	15	2c 14	21mm	C	INT	-	-	TC M E E 1.2
EF-1	WASHROOM EXHAUST FAN	REFER TO POWER PLAN	120	1						15	2c 14	21mm	C	INT	-	-	TC M E E 1.2
EF-2	EXHAUST FAN	REFER TO POWER PLAN	120	1						15	2c 14	21mm	C	INT	-	-	TC M E E 1.2
EF-3	EXHAUST FAN	REFER TO POWER PLAN	120	1						15	2c 14	21mm	C	INT	-	-	TC M E E 1.2
FF-1	FORCE FLOW HEATER	REFER TO POWER PLAN	208	1		3		14.42	3.0	20	2c 14	21mm	C	INT	-	-	INT M E E 1.2
FF-2	FORCE FLOW HEATER	REFER TO POWER PLAN	208	1		3		14.42	3.0	20	2c 14	21mm	C	INT	-	-	INT M E E 1.2
FF-3	FORCE FLOW HEATER	REFER TO POWER PLAN	208	1		3		14.42	3.0	20	2c 14	21mm	C	INT	-	-	INT M E E 1.2
FF-4	FORCE FLOW HEATER	REFER TO POWER PLAN	208	1		3		14.42	3.0	20	2c 14	21mm	C	INT	-	-	INT M E E 1.2
EBB-1	ELECTRIC BASEBOARD HEATER	REFER TO POWER PLAN	120	1		0.5		4.17	0.5	15	2c 14	21mm	C	INT	-	-	ET M E E 1.2
EBB-2	ELECTRIC BASEBOARD HEATER	REFER TO POWER PLAN	120	1		0.5		4.17	0.5	15	2c 14	21mm	C	INT	-	-	ET M E E 1.2
EBB-3	ELECTRIC BASEBOARD HEATER	REFER TO POWER PLAN	208	1		1.9		9.13	1.9	15	2c 14	21mm	C	INT	-	-	ET M E E 1.2
EBB-4	ELECTRIC BASEBOARD HEATER	REFER TO POWER PLAN	120	1		0.5		4.17	0.5	15	2c 14	21mm	C	INT	-	-	ET M E E 1.2
EBB-5	ELECTRIC BASEBOARD HEATER	REFER TO POWER PLAN	120	1		0.5		4.17	0.5	15	2c 14	21mm	C	INT	-	-	ET M E E 1.2
DHWT-1	DOMESTIC HOT WATER TANK	REFER TO POWER PLAN	120	1	5			4.0	0.48	15	2c 14	21mm	A	INT	-	-	PCS M E E 1.2, 2.3
RP-1	RECIRCULATION PUMP	REFER TO POWER PLAN	120	1				4.17	0.5	15	2c 14	21mm	C	INT	-	-	AQUA M E E 1.2
DW	KITCHEN DASHWASHER	REFER TO POWER PLAN	208	1		6		28.85	6.0	40	2c 8	27mm	C	INT	-	-	INT M E E 1.2

GENERAL NOTES:
A. CONTRACTOR TO OBTAIN AND REVIEW MECHANICAL DRAWINGS AND SCHEDULES DURING TENDER TO ENSURE ALL SCOPE REQUIRED FOR ELECTRICAL CONNECTION TO MECHANICAL UNITS HAS BEEN ALLOWED FOR. NO EXTRAS WILL BE ALLOWED FOR STARTERS, DISCONNECTS, OR ANY OTHER EQUIPMENT IF IT IS SHOWN ON THE MECHANICAL TENDER DRAWINGS TO BE SUPPLIED BY ELECTRICAL.
B. CONTRACTOR TO REVIEW MECH SHOP DRAWINGS AND CONFIRM ALL EQUIPMENT LOADS, OVERCURRENT PROTECTION, WIRE AND CONDUIT SIZES AND MOUNTING HEIGHTS PRIOR TO ROUGH-IN.
C. CONTRACTOR TO INSPECT ALL MECH EQUIPMENT LABELS ON SITE PRIOR TO INSTALLATION AND INFORM THE CONSULTANT OF ANY DISCREPANCIES. FOLLOW THE MECH LABELS FOR FINAL SIZE OF THE BREAKERS AS PER C.E.C.
D. ALL MOTORS LOCATED OUTSIDE TO BE C/W WEATHER PROOF DISCONNECT SWITCHES & RAIN TIGHT CONNECTIONS.
E. DIV. 26 TO PROVIDE SEPARATE LOCAL DISCONNECT SWITCH FOR MECH EQUIPMENT IF NOT SUPPLIED WITH THE PACKAGED UNIT.
F. ALL MOTOR RATED RELAYS ARE TO BE WITH A HOA POSITION SWITCH, MOTOR PROTECTION SWITCH AND 24 VAC CONTROL CIRCUIT.
G. ELECTRICAL CONTRACTOR IS TO COORDINATE LOCATION OF ALL ELECTRICAL CONNECTIONS AND JUNCTION BOXES BEING PROVIDED WITH MECHANICAL DRAWINGS AND MECHANICAL CONTRACTOR ON SITE.
H. LOCATIONS OF MECHANICAL EQUIPMENT HAVE BEEN SHOWN AS REFERENCE ONLY ON ELECTRICAL DRAWINGS. CONTRACTOR IS TO REVIEW MECHANICAL DRAWINGS TO VERIFY QUANTITIES AND LOCATIONS OF ALL EQUIPMENT REQUIRING AN ELECTRICAL CONNECTION. MAKE ALLOWANCES AS NECESSARY.

KEY NOTES:
1. ALL DISCONNECTS ARE S, I AND C BY ELECTRICAL
2. SINGLE POINT CONNECTION UNIT
3. GAS WATER HEATER, PROVIDE ELECTRICAL FOR IGNITION

(A) SUPPLIED BY:	(B) STARTER TYPE:	(C) CONTROL TYPE:	T =
E = ELECTRICAL	MAN = MANUAL STARTER	BMS = BUILDING MANAGEMENT SYSTEM	LOW VOLTAGE TSTAT OR SENSOR
M = MECHANICAL	MAG = MAGNETIC STARTER W/ HOA SWITCH W/ AUX. CONTACTS	D = DDC SYSTEM	TAMPER SWITCH
O = OWNER OR OTHERS	MRR = MOTOR RATED RELAY C/W 24VAC COIL, HOA SWITCH AND MOTOR PROTECTION SWITCH	ES = END SWITCH	FIRE ALARM PANEL
	INT = INTEGRAL TO UNIT	ET = LINE VOLTAGE THERMOSTAT	LIFE GUARD PANEL
	VFD = VARIABLE FREQUENCY DRIVE COMPLETE WITH BYPASS AND HOA MAGNETIC STARTER (ALSO NOTED AS VSD).	TSTAT = THERMOSTAT	CONTINUOUS OPERATION
	HOA = MAGNETIC STARTER COMPLETE WITH HAND/ON-OFF/AUTO SWITCH	FA = FIRE ALARM	WALL SWITCH
	PCS = PACKAGED CONTROL SYSTEM	FS = FLOW SWITCH	REVERSE ACTING THERMOSTAT
	SW OR WS = WALL SWITCH	GS = GAS SENSOR	VARIABLE SPEED CONTROL SWITCH
	CP = CONTROL PANEL	H = HUMIDITY SENSOR	PRESSURE SWITCH
		I = INTERLOCK	TIME CLOCK
		LS = LEVEL SWITCH	PUMP CONTROLLED BY AQUASTAT
		PCS = PACKAGED CONTROL SYSTEM	

2 MECHANICAL SCHEDULE
E3.0 NTS

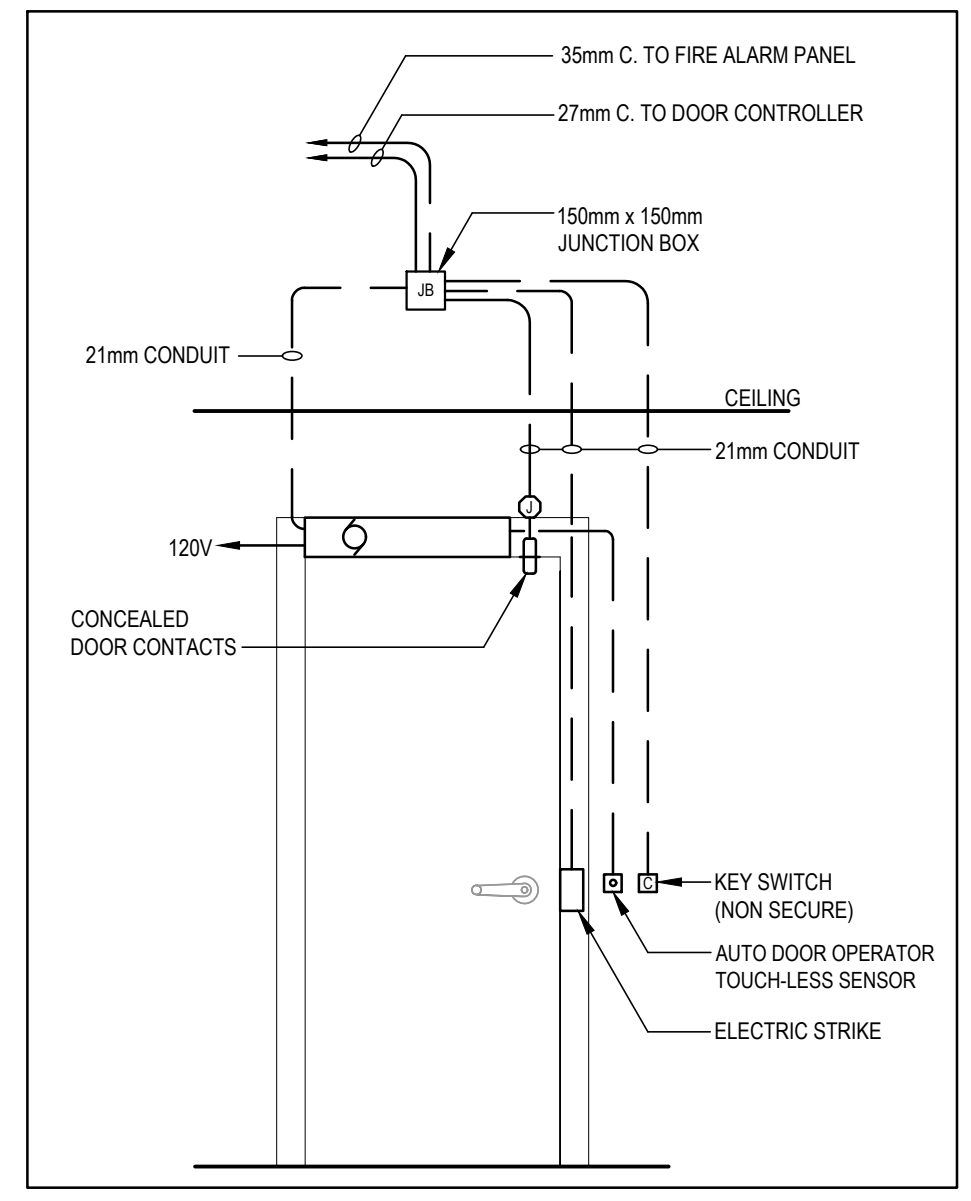


3 SINGLE LINE DIAGRAM
E3.0 NTS

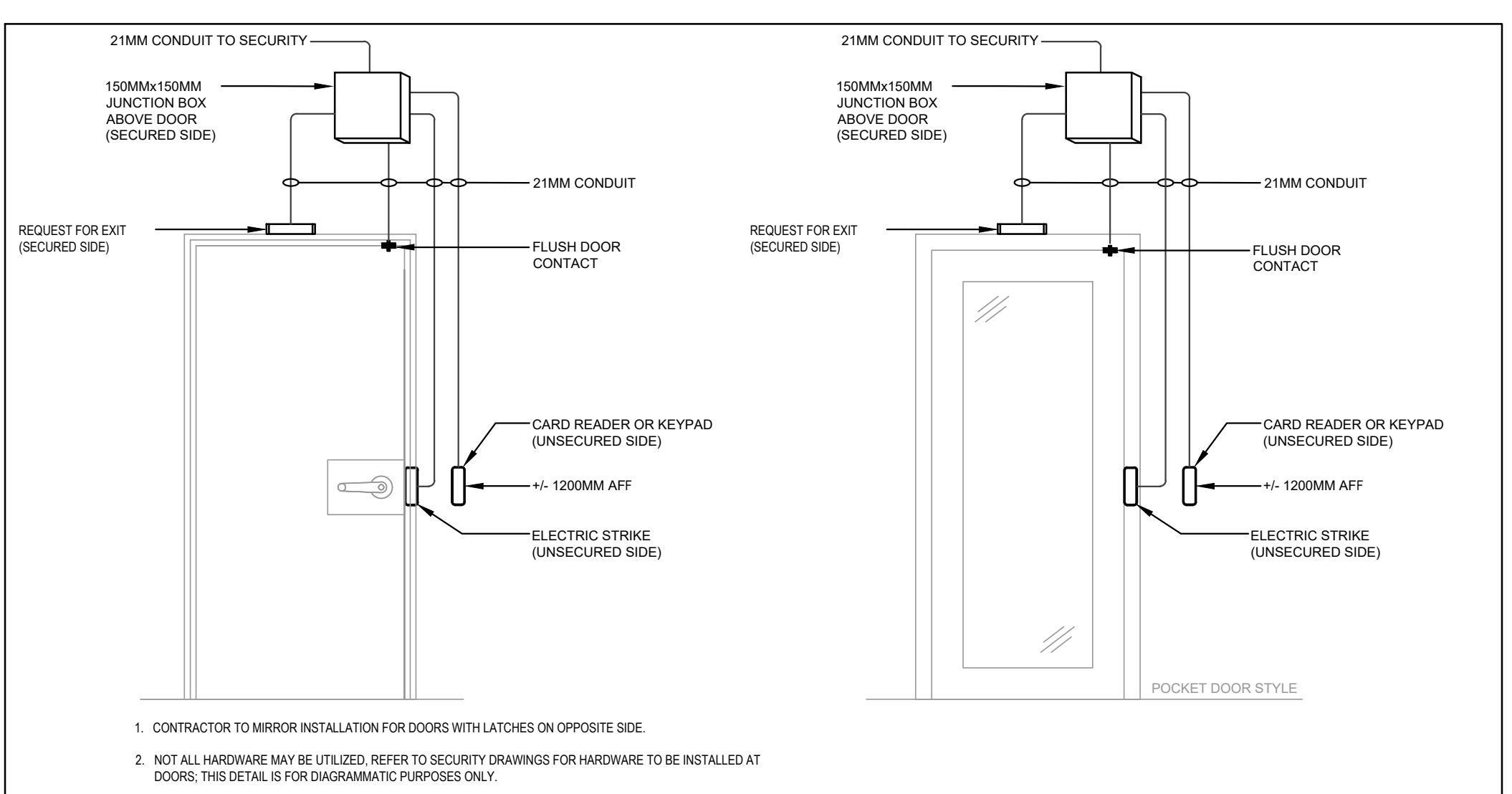
ZONE	AREA	DEVICES
Z1	MAIN FLOOR	PS/HD/CO/SMOKE
Z2	MAIN FLOOR GYMNASIUM	PS/HD/SMOKE
Z3	MAIN FLOOR KITCHEN	CO/HD/SMOKE
Z4	MEZZANINE FLOOR	HEAT
Z5	NORTH STAIR	SMOKE
Z6	WEST STAIR	SMOKE
Z7	KITCHEN HOOD SUPPRESSION	ACTIVATION
Z8	SPARE	-

NOTES:
PS = PULL STATION, HD = HEAT DETECTOR, CO = CARBON MONOXIDE

4 FIRE ALARM SCHEDULE
E3.0 NTS



5 ADO - INFRASTRUCTURE
E3.0 NTS



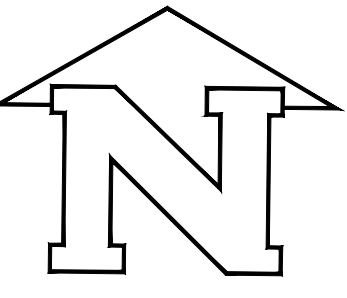
6 ACCESS CONTROL - ELECTRIC STRIKE INFRASTRUCTURE
E3.0 NTS

1. CONTRACTOR TO MIRROR INSTALLATION FOR DOORS WITH LATCHES ON OPPOSITE SIDE.
2. NOT ALL HARDWARE MAY BE UTILIZED. REFER TO SECURITY DRAWINGS FOR HARDWARE TO BE INSTALLED AT DOORS; THIS DETAIL IS FOR DIAGRAMMATIC PURPOSES ONLY.

Contractor must check and verify all dimensions and conditions on site and report any discrepancies to designer and/or engineer prior to proceeding with work

DO NOT SCALE DRAWINGS

All drawings, specifications and related documents are the copyright property of AES Engineering Ltd. Reproduction of any of the aforementioned documents in whole or in part is not permitted without the written permission of AES Engineering Ltd.



PROJECT NORTH

PRODUCTION DRAWINGS BY:



REV	DESCRIPTION	DATE
6	ISSUED FOR TENDER ADDENDUM #1	16/08/2024
5	ISSUED FOR TENDER	02/08/2024
4	ISSUED FOR REVIEW	28/05/2024
3	ISSUED FOR PERMIT RE-SUBMISSION	22/04/2024
2	ISSUED FOR PERMIT	06/03/2024
1	ISSUED FOR COORDINATION	16/02/2024

PROJECT NAME:

BRIDGEVIEW METIS DAYCARE

11475 126A St
Surrey, BC, V3V 5G8

DRAWING TITLE:

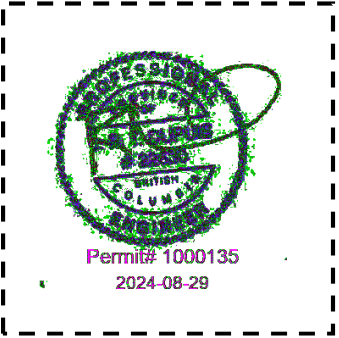
DETAILS AND SCHEDULES

DATE:	AUG 2024
SCALE:	AS NOTED
DRAWN BY:	TN
CHECKED BY:	KS
JOB NUMBER:	0223.0752

DRAWING NUMBER:

E3.0

Electrical Tender Addendum No. 02

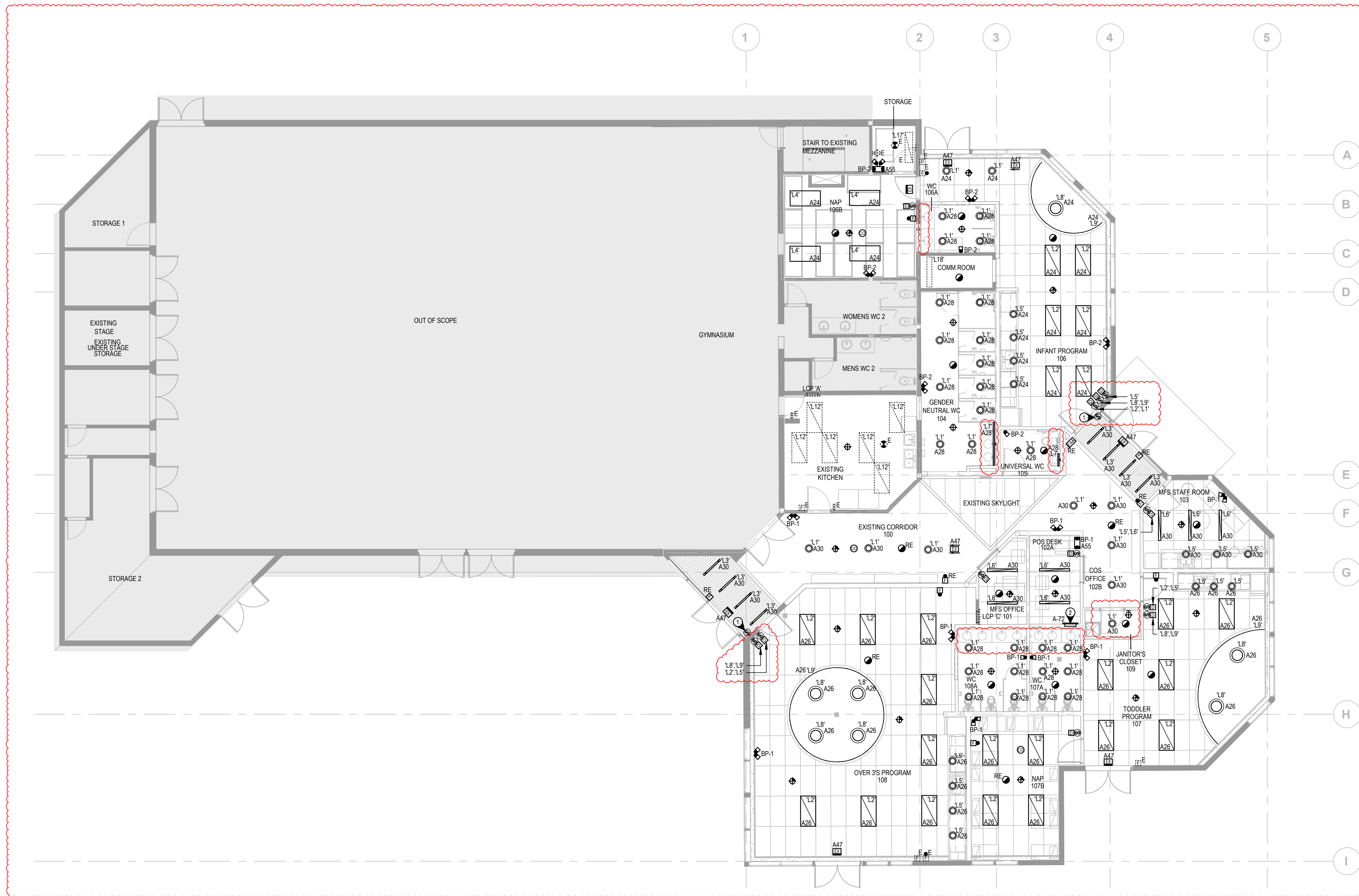
PROJECT NAME:	City of Surrey Bridgeview Daycare	PROJECT No: 0223.0752
		CONTRACT: ELECTRICAL
ATTN:	Ana Cadena	DATE: August 29, 2024
TO:	StudioHub Architects Ltd.	PAGE: 1 of 3
ISSUED BY:	Tim Ng	
PROFESSIONAL'S SEAL AND SIGNATURE:	NOTE:	
	<p>The following addendum supersedes information contained in drawings and specifications issued for the project to the extent referenced. This addendum forms part of the contract documents and is subject to all of the conditions set out in the contract conditions.</p> <p><input checked="" type="checkbox"/> No seal and signature required</p>	
H:\PROJECTS\2023\0223.0752\TENDER\ADDENDA\		

1. Sheet E2.0 – Revised Lighting and Life Safety Layout

- .1 Deleted (1) L7 in each room at 106A, 107A, 108A.
- .2 Added (2) L1 in each room at 107A and 108A.
- .3 Revised the location of L7 in 105 to suit the updated layout.
- .4 Revised the length of L7 in 104 to suit the updated layout.
- .5 Revised the location of switches in 100, 106, 108, 109 suit the updated layout.
- .6 Revised the lighting layout as per updated RCP plan.

2. Sheet E2.1 – Revised Power and Systems Layout

- .1 Revised the location of electrical in universal WC 105.
- .2 Deleted (1) emergency call button in gender neutral WC 104.



GENERAL NOTES

- A. NEW CARBON MONOXIDE DETECTORS SHALL BE SYSTEM SENSOR CO1224 SERIES CO1224TR AND TIED TO THE FIRE ALARM SYSTEM.
- B. COORDINATE WITH INTERIOR DESIGNER FOR EXACT LOCATIONS OF EXIT SIGNAGES PRIOR TO ROUGH-IN.

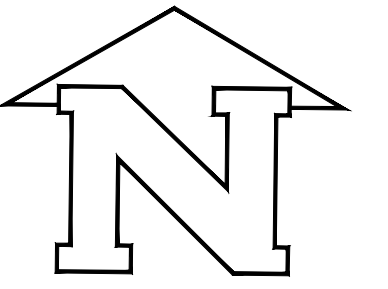
DRAWING KEY NOTES

- 1. 3-WAY CONTROL FOR CORRIDOR LIGHTS.
- 2. NEW ALIGHT WIRE LIGHTING CONTROL PANEL. REFER TO PLANS FOR LOW-VOLTAGE SYMBOLS.

Contractor must check and verify all dimensions and conditions on site and report any discrepancies to designer and/or engineer prior to proceeding with work

DO NOT SCALE DRAWINGS

All drawings, specifications and related documents are the copyright property of AES Engineering Ltd. Reproduction of any of the aforementioned documents in whole or in part is not permitted without the written permission of AES Engineering Ltd.



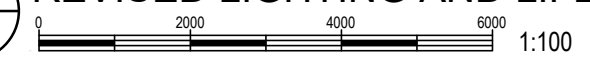
PROJECT NORTH

PRODUCTION DRAWINGS BY:



REV	DESCRIPTION	DATE
8	ISSUED FOR TENDER ADDENDUM #2	29/08/2024
7	ISSUED FOR PERMIT AMENDMENT	16/08/2024
6	ISSUED FOR TENDER ADDENDUM #1	16/08/2024
5	ISSUED FOR TENDER	02/08/2024
4	ISSUED FOR REVIEW	28/05/2024
3	ISSUED FOR PERMIT RE-SUBMISSION	22/04/2024
2	ISSUED FOR PERMIT	06/03/2024
1	ISSUED FOR COORDINATION	16/02/2024

1 REVISED LIGHTING AND LIFE SAFETY LAYOUT
E2.0



PROJECT NAME:

BRIDGEVIEW METIS DAYCARE

11475 126A St
Surrey, BC, V3V 5G8

DRAWING TITLE:

REVISED LIGHTING AND LIFE SAFETY LAYOUT

DATE:	AUG 2024
SCALE:	AS NOTED
DRAWN BY:	TN
CHECKED BY:	KS
JOB NUMBER:	0223.0752

DRAWING NUMBER:

E2.0

GENERAL NOTES

- ALL NEW RECEPTACLES SHALL BE TAMPER RESISTANT TYPE.
- NEW DATA CABLING IN MFS OFFICE 101 SHALL TERMINATE TO NEW SERVER RACK IN MFS OFFICE. NEW DATA CABLING IN COS OFFICE 102B SHALL TERMINATE TO THE EXISTING SERVER RACK IN COMM ROOM.
- DATA DROPS FOR CCTV AND WIFI ACCESS POINT SHALL TERMINATE TO THE EXISTING SERVER RACK IN COMM ROOM.
- THIS CONTRACTOR TO PROVIDE 3/4" CONDUIT INFRASTRUCTURE C/W PULL STRING FOR THE INTRUSION SYSTEM INCLUDING GLASS BREAKER SENSORS, MOTION DETECTORS, DOOR ACCESS CONTROLS AND CONTROL PANEL, LOCK DOWN SYSTEM, PANIC ALARM SYSTEM AND SECURITY SYSTEM.
- CONTRACTOR TO UPDATE THE BREAKER LABELS TO "SPARE" FOR EXISTING CIRCUITS WHICH IS NO LONGER TO PROVIDE ANY POWER AFTER DEMOLITION.

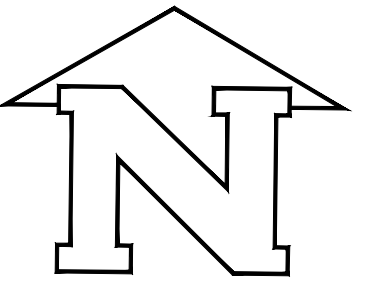
DRAWING KEY NOTES

- SUPPLY AND INSTALL A NEW WALL-MOUNTED SERVER RACK EQUAL TO PANDUIT PZVMC12W WALL MOUNT CABINET, 12RU C/W RACK PDU P8B14M. ENSURE RACK IS GROUNDED AND PROVIDE 3/4" THICK PLYWOOD BACKBOARD.
- MECHANICAL UNITS LOCATED ON ROOF. CONTRACTOR TO COORDINATE EXACT LOCATION WITH MECHANICAL CONTRACTOR ON SITE. CONTRACTOR TO SUPPLY AND INSTALL WEATHERPROOF GFCI RECEPTACLE C/W "WHILE-IN-USE" COVER BESIDE EACH UNIT.
- THIS CONTRACTOR TO PROVIDE 2X2" CONDUITS C/W TWO (2) CAT6A BACKBONE FOR THE CONNECTION BETWEEN THE NEW SERVER RACK IN MFS OFFICE AND THE EXISTING SERVER RACK IN COMM ROOM.
- PROVIDE AN EMERGENCY CALL SYSTEM (CAMDEN CX-WEC10K2). COORDINATE WITH INTERIOR DESIGNER FOR EXACT LOCATION OF EMERGENCY PUSH BUTTON PRIOR TO ROUGH-IN.

Contractor must check and verify all dimensions and conditions on site and report any discrepancies to designer and/or engineer prior to proceeding with work

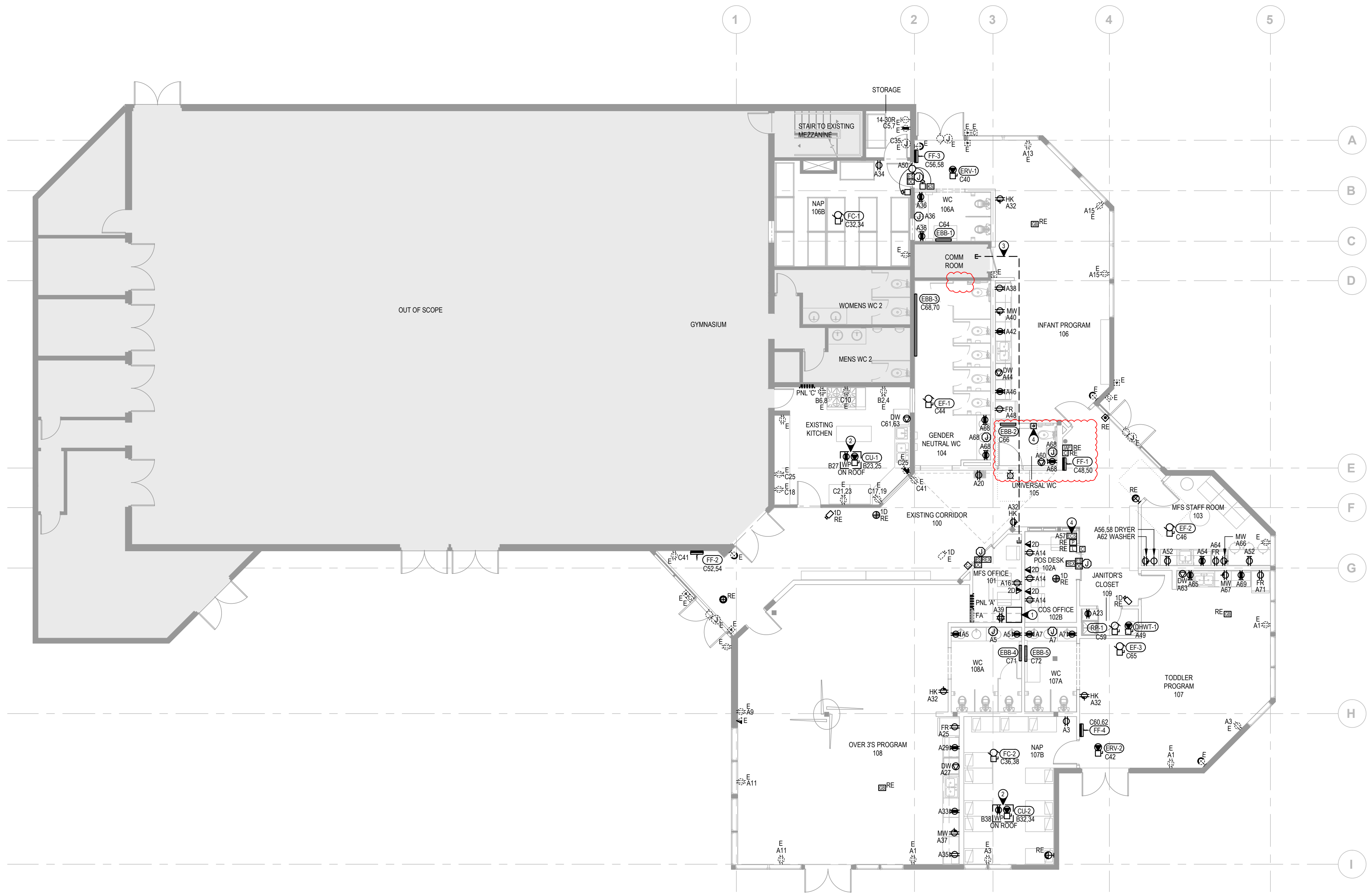
DO NOT SCALE DRAWINGS

All drawings, specifications and related documents are the copyright property of AES Engineering Ltd. Reproduction of any of the aforementioned documents in whole or in part is not permitted without the written permission of AES Engineering Ltd.



PROJECT NORTH

PRODUCTION DRAWINGS BY:



1 REVISED POWER AND SYSTEMS LAYOUT
E2.1

EXISTING POWER PANEL "A" 225A(RATED), 120/208V 3P/4W									
DESIGNATION	CCT. NO.			PH. A	PH. B	CCT. NO.	PH. C	BKR	DESIGNATION
	A	B	C						
SOUTH EAST RECEPTACLES*	15A	1			2	15A			NORTHEAST LIGHTS*
SOUTH EAST AND 107B NAP RECEPTACLES**	15A	3			4	15A			RECEPTION / LOBBY / WASHROOM / LIGHTS*
108A WASHROOM GFCI**	15A	5			6	15A			SOUTH LIGHTS*
107A WASHROOM GFCI**	15A	7			8	15A			SOUTHEAST LIGHTS*
CHILD MINDING RECEPTACLES*	15A	9			10	15A			SPARE
CHILD MINDING RECEPTACLES*	15A	11			12	15A			SPARE
COMPUTER / KITCHEN PREP RECEPTACLES*	15A	13			14	15A			102A POS DESK RECEPTACLES**
COMPUTER ROOM RECEPTACLES*	15A	15			16	15A			101 MOS OFFICE RECEPTACLES**
CCTV RECEPTACLE*	15A	17			18	15A			RE-CIRCULATING PUMP**
RECEPTION OFFICE RECEPTACLE*	15A	19			20	15A			WATER FOUNTAIN RECEPTACLE**
NIGHT LIGHTS / EXITS / EM*	15A	21			22	15A			LIGHTING RELAY PANEL H*
109 JAN. CLOSET RECEPTACLES**	15A	23			24	15A			LIGHTING FOR 106 106B**
108 FRIDGE**	15A	25			26	15A			LIGHTING FOR 107 107B 108**
108 DISHWASHER**	20A	27			28	15A			LIGHTING FOR WC 104 105 106A 107A 108A**
108 COUNTERTOP GFCI**	15A	29			30	15A			LIGHTING FOR 100 101 102A 103 109**
OUTSIDE RECEPTACLE*	15A	31			32	20A			HOUSE KEEPING
108 COUNTERTOP GFCI**	15A	33			34	15A			NAP 106B RECEPTACLE
108 COUNTERTOP RECEPTACLE**	15A	35			36	15A			WC106A GFCI
108 MICROWAVE**	20A	37			38	15A			106 COUNTERTOP RECEPTACLE
101 MOS OFFICE RECEPTACLES**	15A	39			40	20A			106 MICROWAVE
SPARE	15A	41			42	15A			106 COUNTERTOP GFCI
SPARE	15A	43			44	20A			106 DISHWASHER
EAST AUTO DOOR*	15A	45			46	15A			106 COUNTERTOP GFCI
EXIT SIGN FOR EAST AREA**	15A	47			48	15A			106 FRIDGE
DOMESTIC HOT WATER TANK DHWT-1**	15A	49			50	15A			AUTOMATIC DOOR OPERATOR
WEST AUTO DOOR	15A	51			52	15A			103 COUNTERTOP RECEPTACLE
FLUSH/SINK VALVES	15A	53			54	15A			103 GFCI
EMERGENCY REMOTE HEAD	15A	55			56	30A			103 DRYER
EMERGENCY CALL SYSTEM FOR 105	15A	57			58	15A			105 HAND DRYER
EXTERIOR EVENT PLUG*	50A	59			60	15A			106 WASHER
107 DISHWASHER	20A	61			62	15A			103 FRIDGE
107 COUNTERTOP GFCI	15A	63			64	20A			106 MICROWAVE
107 MICROWAVE	20A	67			68	15A			UNIVERSAL/GENDER NEUTRAL WC GFCI
107 COUNTERTOP GFCI	15A	69			70	15A			SPARE
107 FRIDGE	15A	71			72	20A			LIGHTING CONTROL PANEL

NOTED [*] IS EXISTING
NOTED [**] IS NEW

2 PANEL 'A'
E2.1 NTS

EXISTING POWER PANEL "B" 225A(RATED), 120/208V 3P/4W									
DESIGNATION	CCT. NO.			PH. A	PH. B	CCT. NO.	PH. C	BKR	DESIGNATION
	A	B	C						
SPARE/OUTSIDE LIGHTS*	15A	1			2	15A			GYM WASHROOM/STORAGE/STAGE RECEPTACLE*
SPARE/OUTSIDE LIGHTS*	15A	3			4	15A			GYM WASHROOM/STORAGE/STAGE RECEPTACLE*
OUTSIDE LIGHTS/SPARE*	15A	5			6	15A			STORAGE/STAGE/RYM RECEPTACLE*
OUTSIDE LIGHTS/SPARE*	15A	7			8	15A			STORAGE/STAGE/RYM RECEPTACLE*
WEST EXTERIOR EVENT RECEPTACLE*	50A	9			10	15A			OUTSIDE WASHROOM/WATER PARK PANEL*
GYM LIGHTS*	20A	11			12	20A			OUTSIDE WASHROOM/WATER PARK PANEL*
TRACK LIGHTS*	20A	13			14	20A			MECHANICAL ROOM RECEPTACLE*
TRACK LIGHTS*	20A	15			16	20A			GYM RECEPTACLES*
POWER BASKETBALL HOOP*	15A	17			18	20A			RTU4 CONV. PLUG*
GYM LIGHTS*	15A	19			20	15A			RTU3 CONV. PLUG*
GYM LIGHTS*	15A	21			22	15A			SPARE
CU-1	20A	23			24	20A			NLE/EXITS/STORAGE LIGHTS/MEZZANINE LIGHTS*
GFCI FOR CU-1	15A	25			26	30A			MECHANICAL ROOM HEATER*
RELAY PANEL B*	20A	27			28	15A			20A MECHANICAL ROOM HEATER*
POT LIGHTS*	20A	31			32	20A			CU-2
SPARE	15A	33			34	15A			15A SPARE/HONEYWALL FA PANEL*
SPARE	15A	35			36	15A			15A SPARE/HONEYWALL FA PANEL*
DDC*	15A	37			38	15A			GFCI FOR CU-2
SEWAGE CONTROL PANEL*	60A	39			40	15A			MROM FA PANEL*
		41			42	15A			GYM EXT SIGNS*

NOTED [*] IS EXISTING

3 PANEL 'B'
E2.1 NTS

EXISTING POWER PANEL "C" 225A(RATED), 120/208V 3P/4W									
DESIGNATION	CCT. NO.			PH. A	PH. B	CCT. NO.	PH. C	BKR	DESIGNATION
	A	B	C						
EXTERIOR EVENT RECEPTACLE NORTH*	50A	1			2	15A			COUNTER RECEPTACLE*
DRYER RECEPTACLE*	30A	3			4	15A			COUNTER RECEPTACLE*
SERVER UPS TWISTLOCK DRYER RECEPTACLE*	20A	5			6	15A			RANGE RECEPTACLE*
SERVER UPS TWISTLOCK DRYER RECEPTACLE*	20A	7			8	15A			LIGHTING RELAY PANEL C*
COUNTER RECEPTACLE*	20A	9			10	20A			SPARE IN KITCHEN CEILING*
FRIDGE RECEPTACLE*	15A	11			12	20A			SPARE IN KITCHEN CEILING*
COUNTER RECEPTACLE*	15A	13			14	15A			MICROWAVE RECEPTACLE*
FRIDGE RECEPTACLE*	15A	15			16	15A			NORTH LIGHTING*
COUNTER RECEPTACLE*	15A	17			18	15A			NIGHT LIGHTING / EM / EXITS*
FRIDGE RECEPTACLE*	15A	19			20	15A			FIDGE RECEPTACLE
COUNTER RECEPTACLE*	15A	21			22	15A			GYM WASHROOM FLUSH VALVES*
COUNTER RECEPTACLE*	20A	23			24	15A			LIGHTING RELAY PANEL C*
SERVER ROOM RECEPTACLE*	15A	25			26	15A			ACCESS CONTROL*
SERVER ROOM RECEPTACLE*	20A	27			28	15A			FAN COIL FC-1
SERVER ROOM FAN*	15A	29			30	15A			FAN COIL FC-2
SERVER ROOM RECEPTACLE*	15A	31			32	15A			ENERGY RECOVERY VENTILATOR ERV-1
SERVER ROOM RECEPTACLE*	15A	33			34	15A			ENERGY RECOVERY VENTILATOR ERV-2
WASHER RECEPTACLE*	15A	35			36	15A			WASHROOM EXHAUST FAN EF-1
SPARE**	15A	37			38	15A			EXHAUST FAN EF-2
SPARE**	15A	39			40	20A			FORCE FLOW HEATER FF-1
LOBBY RECEPTACLE*	15A	41			42	20A			FORCE FLOW HEATER FF-2
LOBBY WALL HEATER*	15A	43			44	15A			FORCE FLOW HEATER FF-3
LOBBY WALL HEATER*	15A	45			46	15A			FORCE FLOW HEATER FF-4
LOBBY WALL HEATER*	15A	47			48	15A			ELECTRIC BASEBOARD HEATER EBB-1
SPARE**	15A	49			50	15A			ELECTRIC BASEBOARD HEATER EBB-2
SPARE**	15A	51			52	15A			ELECTRIC BASEBOARD HEATER EBB-3
RECIRCULATION PUMP RP-1	15A	53			54	20A			ELECTRIC BASEBOARD HEATER EBB-5
KITCHEN DISHWASHER DW	40A	55			56	15A			
EXHAUST FAN EF-3	15A	57			58	15A			
SPARE	15A	59			60	15A			
SPARE	15A	61			62	15A			
ELECTRIC BASEBOARD HEATER EBB-4	15A	63			64	15A			
ELECTRIC BASEBOARD HEATER EBB-5	15A	65			66	15A			
ELECTRIC BASEBOARD HEATER EBB-6	15A	67			68	15A			
ELECTRIC BASEBOARD HEATER EBB-7	15A	69			70	15A			
ELECTRIC BASEBOARD HEATER EBB-8	15A	71			72	15A			

NOTED [*] IS EXISTING
NOTED [**] IS NEW

4 PANEL 'C'
E2.1 NTS

PROJECT NAME:
BRIDGEVIEW METIS DAYCARE
11475 126A St
Surrey, BC, V3V 5G8

DRAWING TITLE:
REVISED POWER AND SYSTEMS LAYOUT

DATE: AUG 2024
SCALE: AS NOTED
DRAWN BY: TN
CHECKED BY: KS
JOB NUMBER: 0223.0752

DRAWING NUMBER:

E2.1