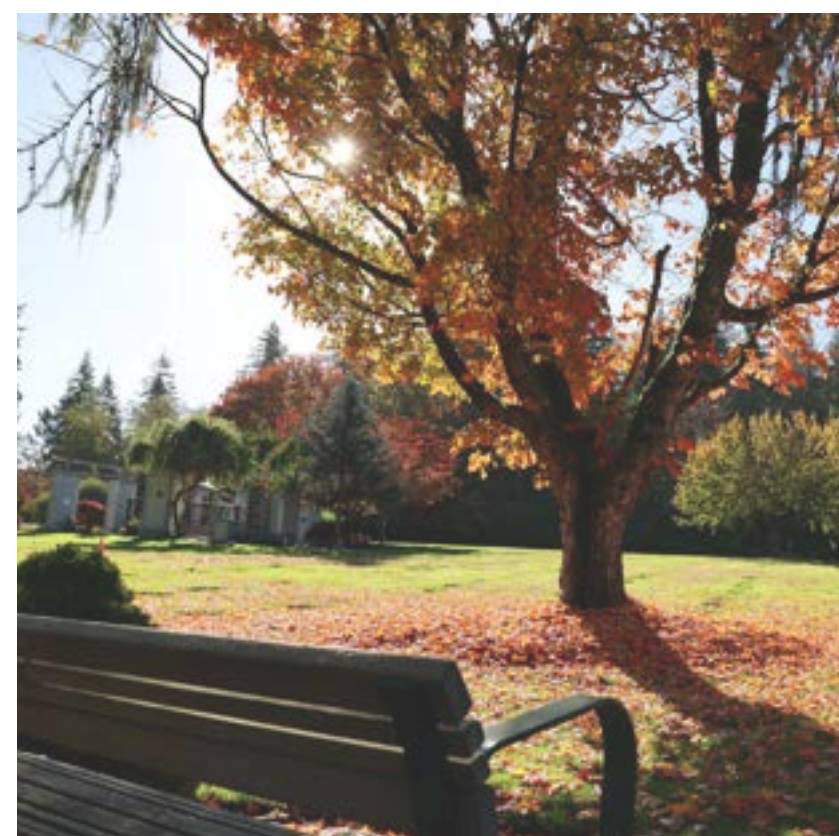


Sunnyside Cemetery Master Plan



Project Description

The City of Surrey is seeking public input to develop a plan to expand Sunnyside Cemetery. The expansion will comply with archaeological and environmental regulations while protecting the Semiahmoo Trail and other important site features. The intent is to provide more burial space to serve the community for the next 25 years while retaining as much forest as possible. In addition, the project provides opportunities to enhance the Semiahmoo Trail, support conditions for wildlife, and manage the forest for future generations to enjoy.



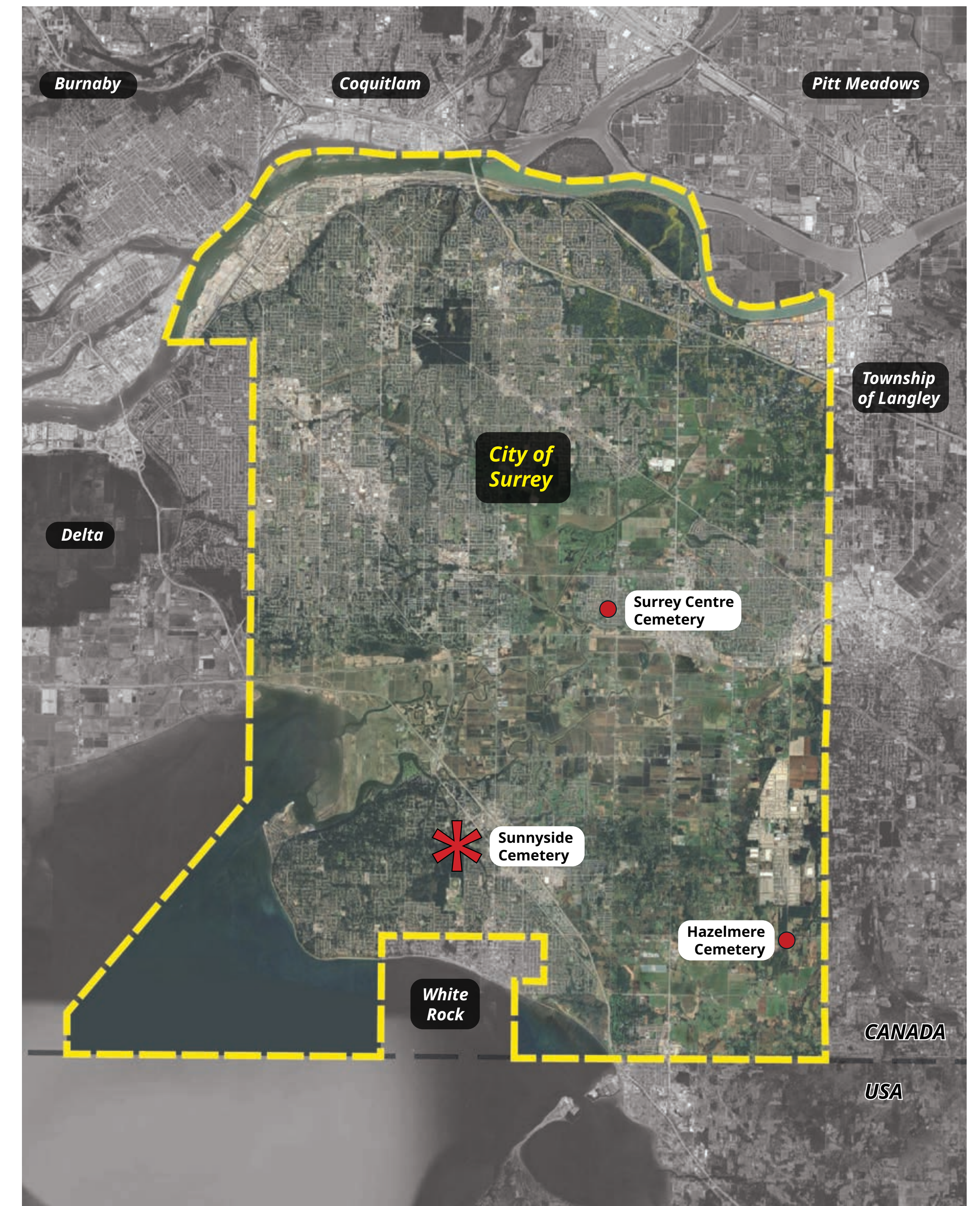
Why do we need to provide more interment capacity at Sunnyside Cemetery?

1. There is limited room left for interment in the City's municipal cemeteries. Of the three City cemeteries, Sunnyside Cemetery is the only remaining cemetery with an opportunity to create more capacity.
2. For almost 100 years, the City has provided cemetery space as an essential service to the community. We have an obligation to continue to provide burial space to keep families together for generations to come.

Project Timeline



WE ARE HERE



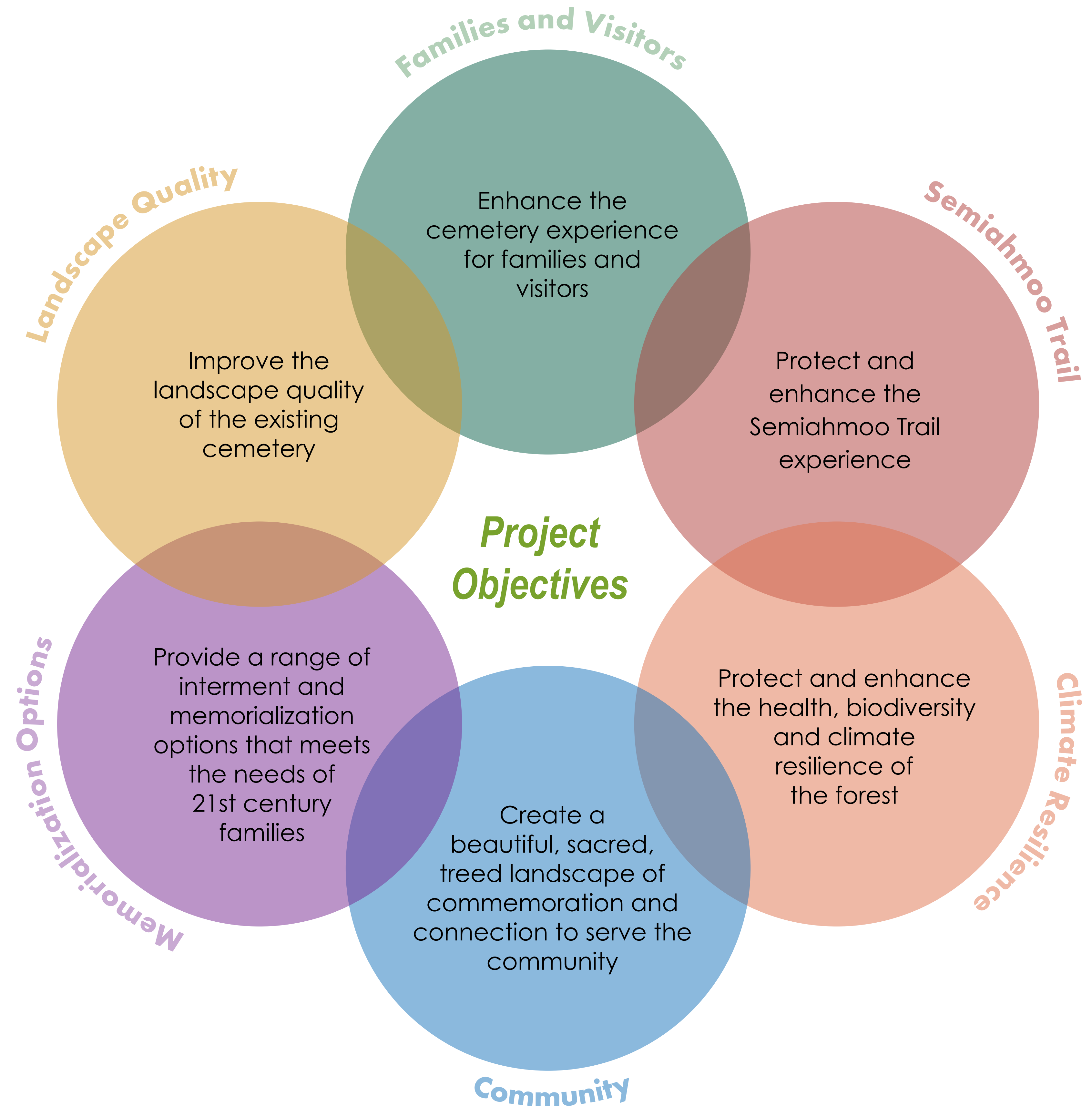
Site Location Plan



Project Goal and Objectives

Project Goal

The Project Goal is to have a healthy forest environment and to provide much needed interment space for the community in a park-like cemetery that is financially sustainable in the long term.



Existing Conditions at Sunnyside Cemetery



Existing Conditions

Site Photos



Main entrance



Secondary entrance (former main entrance)



Scattering garden



Columbarium garden



Administrative building



Operations and maintenance yard



Semiahmoo Trail



Veterans memorial

Expansion Strategies and Interment and Memorialization Options

Proposed Expansion Strategies

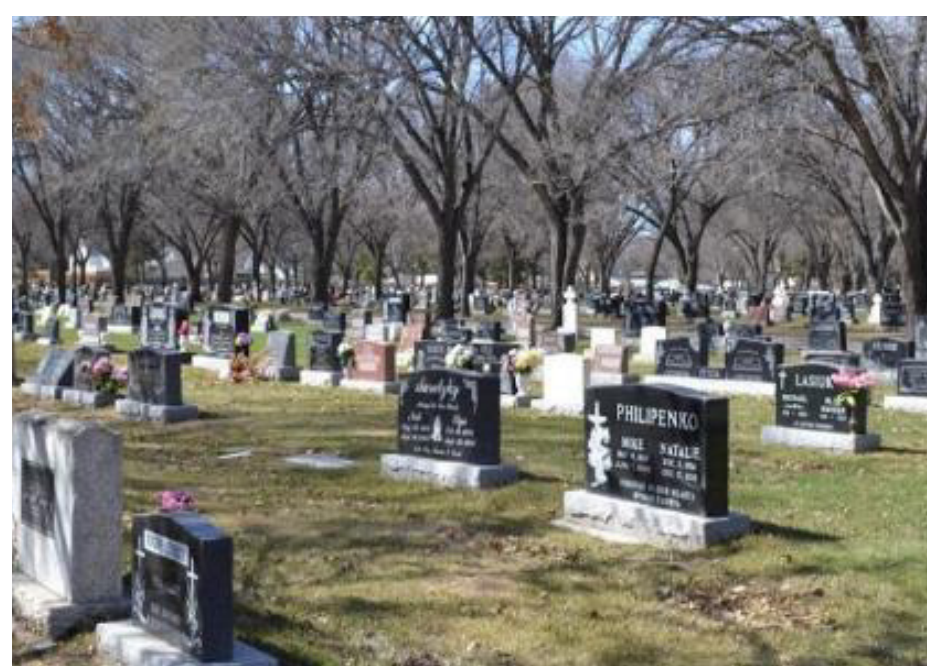
Over the next 25 years, an additional 5 acres at Sunnyside Cemetery is required to meet the needs of the community.

To meet the project goals and objectives, the following strategies are being considered for the master plan:

1. Provide a range of less land-intensive interment and memorialization options as an alternative to in-ground burial of caskets and urns (e.g. cremation gardens, memorial walls, and possibly in the future, terramation areas).
2. Identify areas of the property to be left in their natural state (i.e. retention of key trees, maintaining a windfirm boundary, and buffers to the Semiahmoo Trail and surrounding neighbourhoods).
3. Locate in-ground burial outside of the windfirm tree line.
4. Return interment areas to nature over time (e.g. green burial areas).
5. Implement cemetery expansion in phases according to need.
6. Create more burial capacity by infilling redundant cemetery driveways after surrounding capacity is reached.
7. Improve the existing cemetery with new amenities, such as a washroom, and provide better trail connections to the forest.
8. Review current practices to use cemetery land more efficiently.

Interment & Memorialization Options

Traditional In-Ground Burial



Traditional interment remains the largest user of land and the primary driver of cemetery land needs. It continues to be the preferred interment type for some religious groups.

Cremation



The cremated remains are placed in an urn and either buried or put into a columbaria/ niche wall.

Scattering Garden



A thoughtfully landscaped garden where cremated remains are spread or the majority of the remains are placed in an underground container.

Green Burial/Natural Burial



Interment in a biodegradable casket without embalming, grave liners, or vaults. It involves minimal grave marking/memorialization and promotes habitat restoration on the burial lands.

Memorial Walls



An inscription on a memorial wall to commemorate a loved one, usually memorializing those buried elsewhere or in the scattering garden.

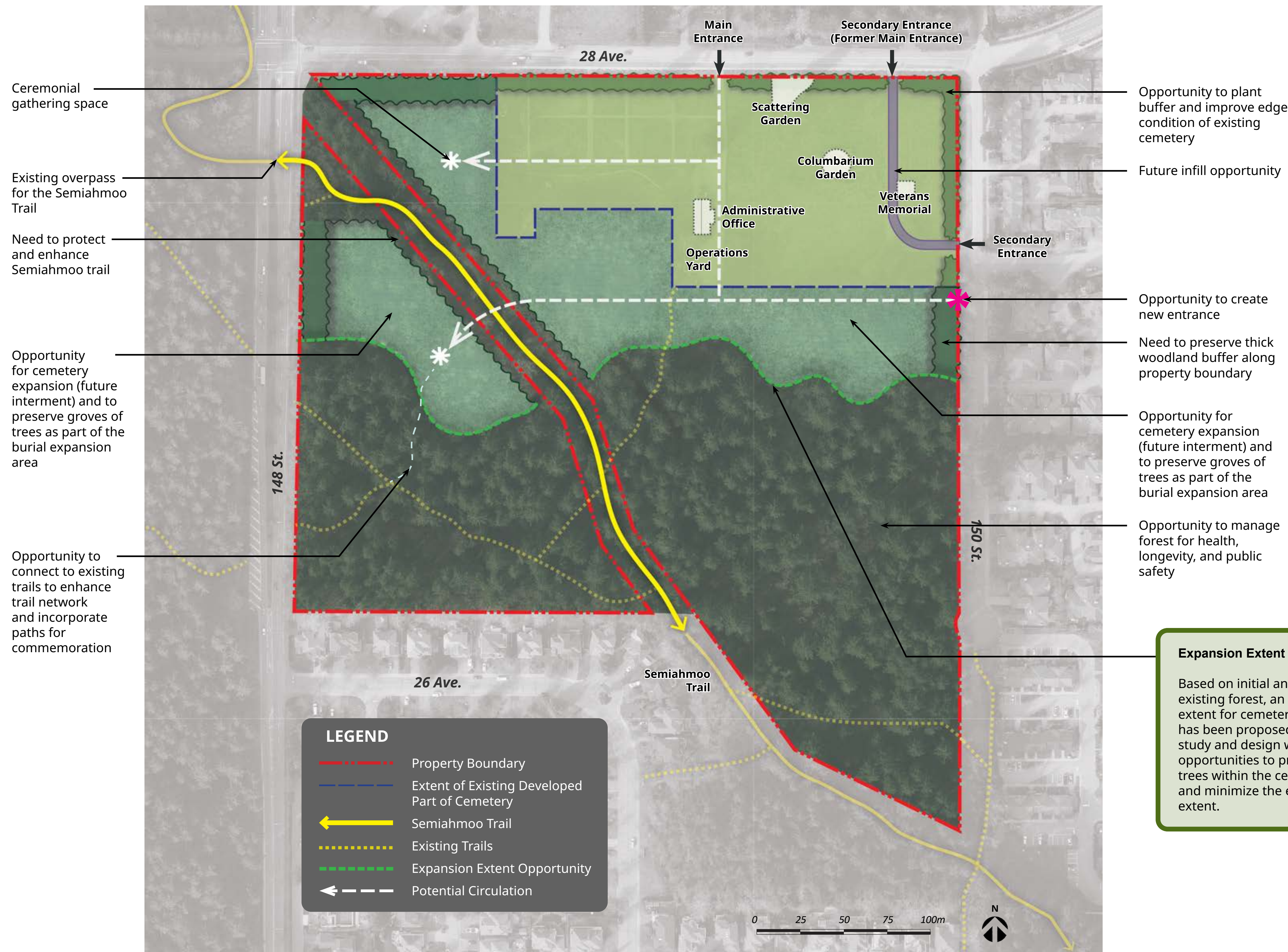
Terramation Garden



A designated area in a cemetery where soil created through the terramation process (the transformation of human remains into soil at a specialized funeral facility) is incorporated into memorial garden spaces. This option is currently pending government approval.

Ideas for Sunnyside Expansion...

Here are some of our ideas: What do you think?



Expansion Opportunities Diagram



Enhance Landscape Character: Forest rooms that form a beautiful, sacred treed landscape of remembrance, connection and commemoration.



Add Programming, Events & Ceremonies: Ceremonial gathering spaces and annual events such as Remembrance Day, Mother's Day, etc.



Consider Biodiversity: Seek opportunities to enhance biodiversity in retained forested areas and in the cemetery where possible.



Add Amenities: e.g., trails, seating, etc., to better serve visitors.

Questions and Comments

What **interment** and **memorialization** options are you interested in having at the cemetery?

What **features** or **amenities** would you like to see at Sunnyside Cemetery? (trails, seating, washroom, information kiosk, gathering space)

What else do we need to know?
Share any other **comments** you have about Sunnyside Cemetery

Take the Online Survey

ONLINE SURVEY

Scan to access or visit: surrey.ca/sunnysidecemetery

Provide your input by December 5, 2024

