

NO: R216

COUNCIL DATE: October 1, 2018

---

## REGULAR COUNCIL

TO: **Mayor & Council**

DATE: **September 27, 2018**

FROM: **General Manager, Parks, Recreation & Culture**

FILE: **6140-20/O**

SUBJECT: **Concept Plan for Orchard Grove Park**

---

## RECOMMENDATION

The Parks, Recreation & Culture Department recommends that Council:

1. Receive this report for information; and
2. Endorse the concept plan for Orchard Grove Park, as detailed in Appendix “I”.

## INTENT

The intent of this report is to inform Council of the proposed concept plan for Orchard Grove Park and to obtain Council approval to proceed with the construction of the proposed concept plan.

## BACKGROUND

Orchard Grove Park, one of the newest parks in Surrey, is a 2.3 hectares (5.8 acres) park located in the Grandview Heights Community (see map, attached as Appendix “II”). The site, located at 16685 24 Avenue, was identified in the Orchard Grove Neighbourhood Concept Plan (NCP) for tree preservation as well as to provide neighbourhood scale amenities in this rapidly growing part of the City. Although not all the land for the Park has been acquired, the City is in a position to advance the development of Orchard Grove Park given the majority of the land has been acquired.

## DISCUSSION

The City presented preliminary project information (Appendix “III”), at a public Open House on November 30, 2017 at Kensington Prairie Community Centre. The Open House was advertised in local newspapers and a notice was sent to approximately 800 homes in the surrounding neighbourhood. Twenty-five individuals signed in to the open house. Feedback was collected from comment forms completed by attendees of the open house. The feedback generally reflected the community’s overwhelming support of the City’s intent to preserve the trees as much as possible and ranked priorities in first, second and third in preference of: forest walking trails/walking loop, a playground, and picnic facilities. The comments from the first phase of engagement generally reflected residents’ desire to see: trees retained, trail networks, minimal

loss of habitat in the surrounding neighbourhood and a safe place to play that includes both grass areas and play areas situated near shade trees.

Informed by the feedback from the first Open House, as well as subsequent arboricultural and geotechnical assessments, two concept designs were developed around the same proposed path network with the only difference being the location of the playground and picnic area in the park. These two concepts (attached as Appendix “IV”) were presented at a second public Open House held on February 20, 2018 at the South Surrey Operations Centre. The community was again very supportive of the proposed concept designs presented at the second Open House and a survey was circulated asking attendees to vote on their preferred location of the playground and picnic area. Of the thirteen votes received, eight favoured Option 1 and five favoured Option 2 based on enhanced opportunities for tree preservation and placement of amenities in existing disturbed areas. Parks Division staff members were invited to review both options and also favoured Option 1 on the basis it offers better sightlines into the park.

The concept plan prepared for Orchard Grove Park proposes a low impact addition of appropriate neighbourhood level park amenities, with the primary focus being on maximizing tree preservation. The concept plan was scheduled to go to the Parks, Recreation & Sport Tourism Committee for review in September however; the Committee was unable to meet. The recommendation to endorse the concept plan has come directly to Council to ensure the timely completion of the project. The preferred concept plan is attached as Appendix “I” to this report.

## **FUNDING**

Funding for this project is available in the Orchard Grove NCP.

## **SUSTAINABILITY CONSIDERATIONS**

Construction of a neighbourhood level park will support the objectives of the City’s Sustainability Charter 2.0. In particular, this work relates to the theme of Built Environment & Neighbourhoods and assists in meeting the following Desired Outcomes (DO):

- Neighbourhoods and Urban Design : DO 1: “Surrey is compromised with distinct, diverse and compact town centres with an engaging public realm”;
- Neighbourhoods and Urban Design : DO 8: “The built environment enhances quality of life, happiness and well-being”; and
- Neighbourhoods and Urban Design : DO 15: “All new buildings, public places and outdoor spaces are welcoming, safe and universally accessible”.

## **CONCLUSION**

The preferred concept plan is sensitively planned around maximizing tree preservation while providing the requisite amenities for this new neighbourhood. The preferred concept plan includes all three of the top ranked amenities while additionally offering various natural area enhancements and numerous casual-use lawn areas. Construction of the park amenities will begin in autumn 2018, with completion scheduled for summer 2019.

Based on the above discussion, it is recommended that Council endorse the Concept Plan for Orchard Grove Park, as detailed in Appendix "I".

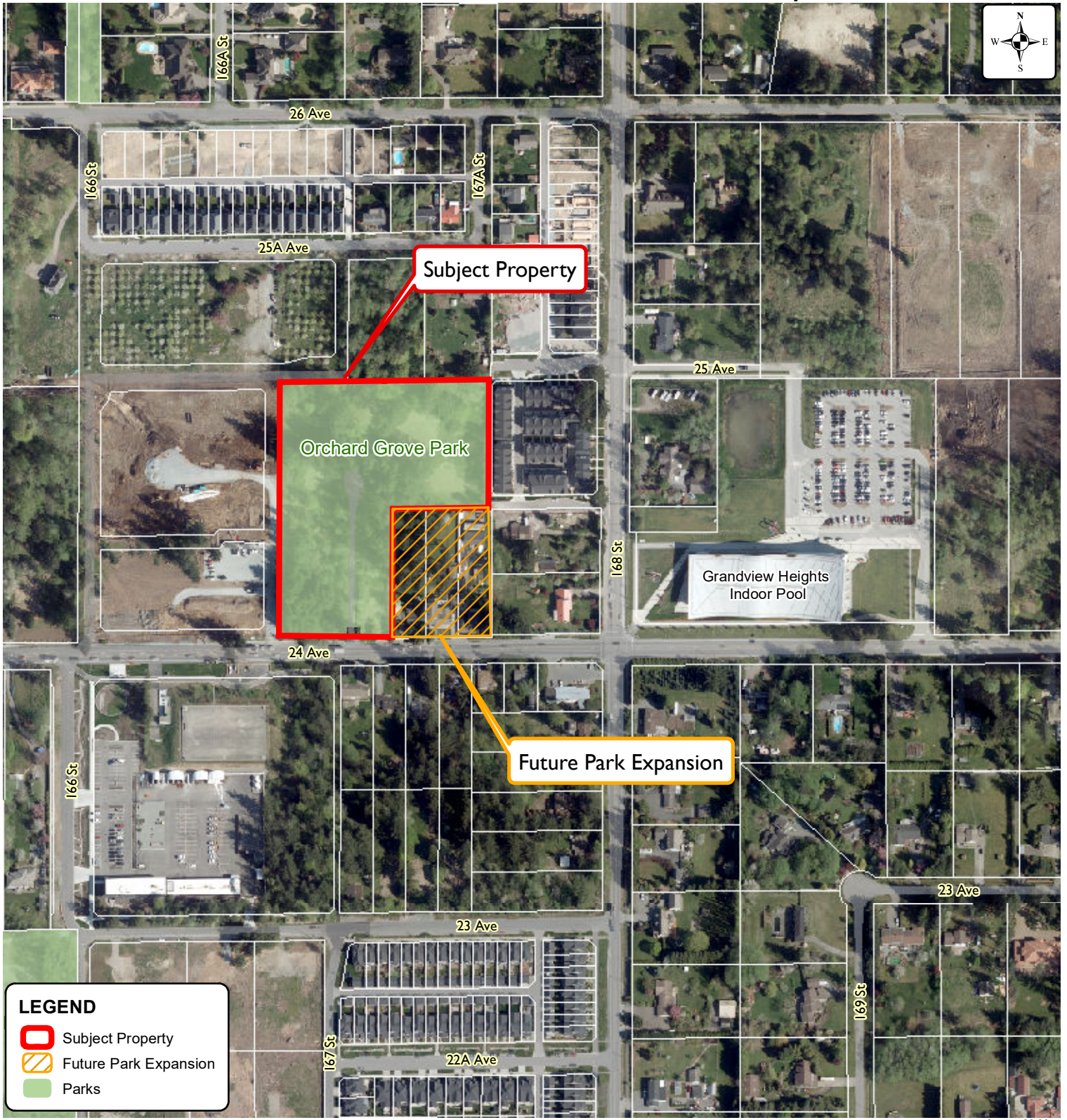
Laurie Cavan  
General Manager,  
Parks, Recreation & Culture

Appendix "I" – Orchard Grove Park Detailed Concept Plan  
Appendix "II" – Orchard Grove Park Location Map  
Appendix "III" – Orchard Grove Park Preliminary Project Information  
Appendix "IV" – Orchard Grove Park – Two Concept Designs




Orchard Grove Park Detailed Concept Plan



# Orchard Grove Park Location Map



**LEGEND**

-  Subject Property
-  Future Park Expansion
-  Parks

Produced by GIS Section: 26-Sep-2018, EM9

Date of Aerial Photograph: April 27, 2018

Scale: 1:4,000 0 30 M



## SUBJECT PROPERTY Orchard Grove Park

ENGINEERING  
DEPARTMENT

The data provided is compiled from various sources and IS NOT warranted as to its accuracy or sufficiency by the City of Surrey.  
This information is provided for information and convenience purposes only.  
Lot sizes, Legal descriptions and encumbrances must be confirmed at the Land Title Office.

## Orchard Grove Park Preliminary Project Information

# 1 Welcome!

## Sunnyside Saddle Club and Orchard Grove Open House

### Background Information

*This open house focuses on the first stage of planning and design for two new park sites in your neighbourhood. Please share your ideas and comments to help shape these new parks!*

**1. Sign in, take a comment form and view the displays.**

We encourage you to provide your ideas and input by completing the comment form.

Project team members are available to provide you with information and to answer your questions about these new parks.

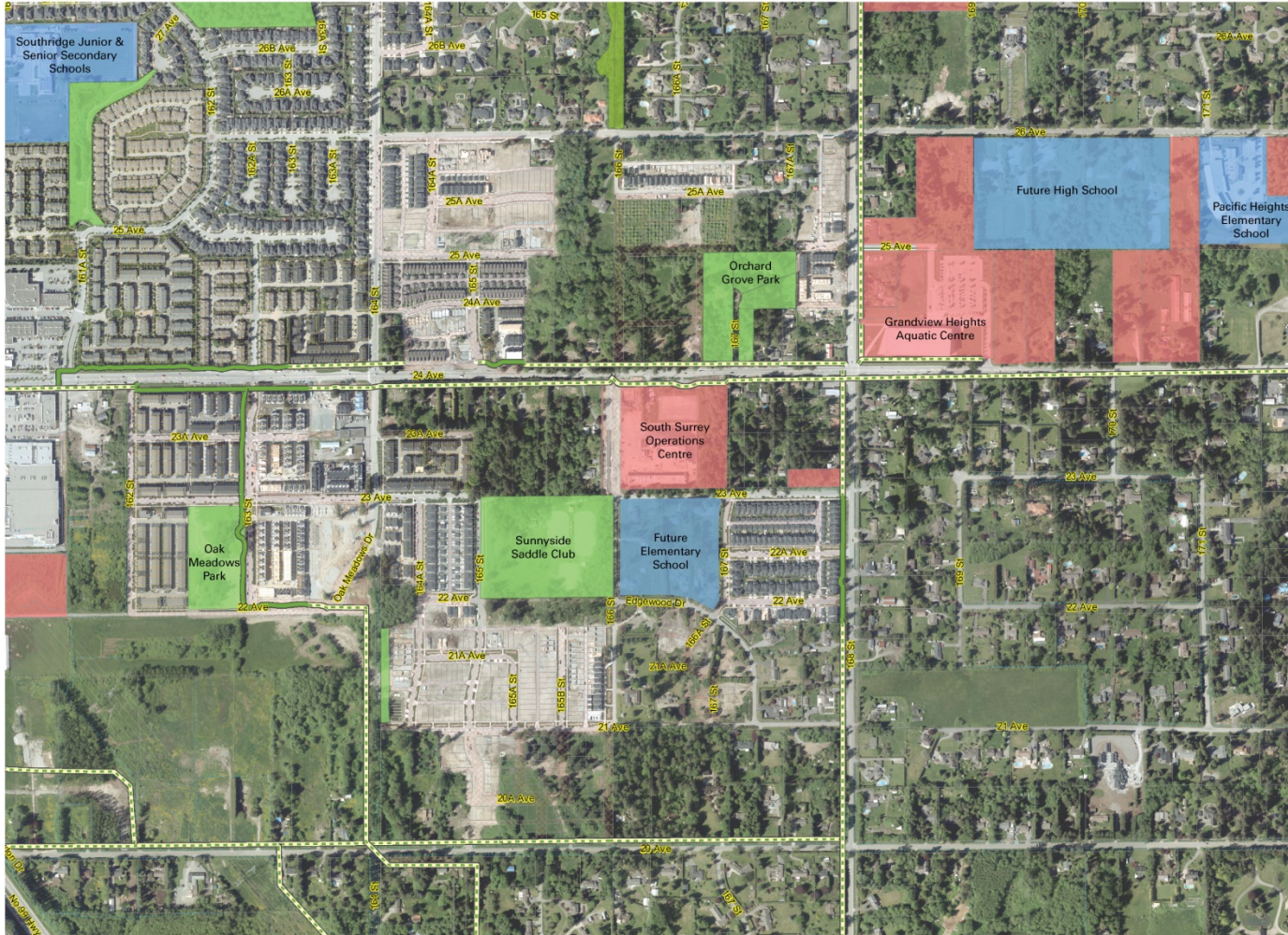
**2. On Board #2, place a coloured dot to indicate where you live on the map.**

If you live outside the area shown on the map, please place your dot in the white space around the map.



# Show us Where you Live

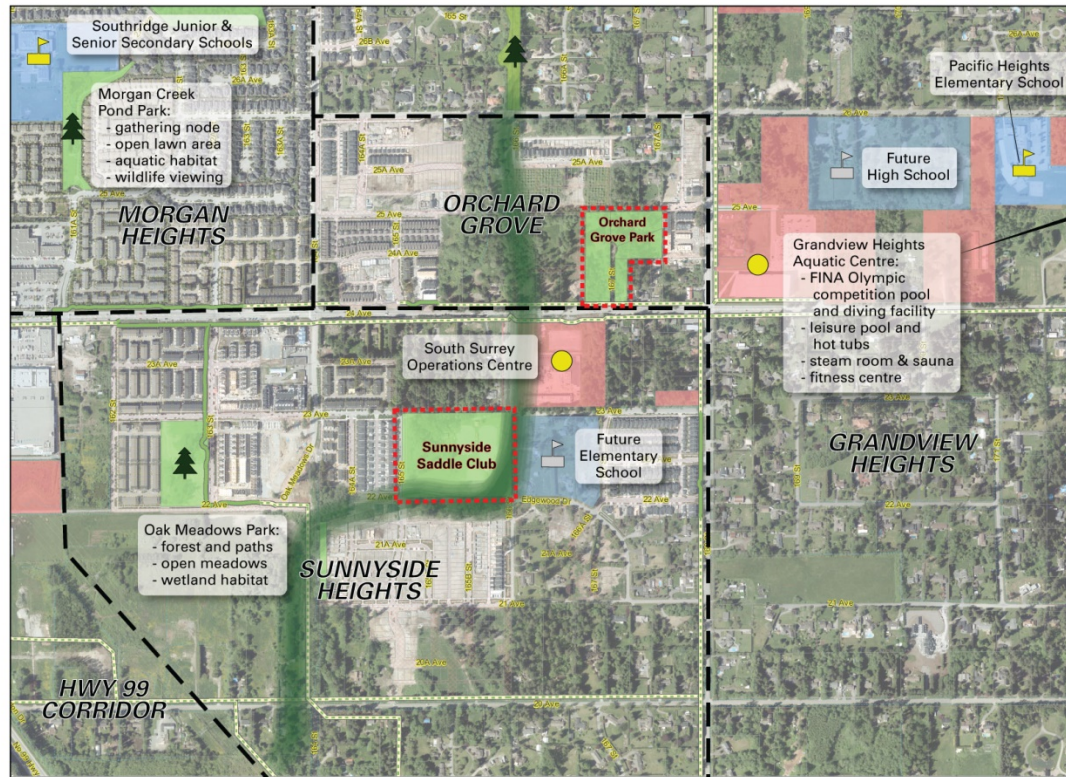
Place a coloured dot to indicate approximately where you live on the map. If you live outside the area shown on the map, please place your dot in the white space around the map.



BACKGROUND

# Neighbourhood Context

The Sunnyside Heights and Orchard Grove neighbourhoods are growing rapidly. There are many parks and amenities planned for the area, including the two new parks currently open for discussion.



Above: Grandview Heights Aquatic Centre

The Sunnyside Saddle Club and Orchard Grove Park are located at the intersection of numerous Neighbourhood Concept Plan (NCP) planning areas. Each of these areas are concurrently experiencing rapid change and growth. As part of this growth comes the introduction of new schools and community amenities such as the new Grandview Heights Aquatic Centre.

Future amenities anticipated in the area may include a library and community centre, ice rinks, a youth park, a sports field complex and a dog off-leash park. The challenge in moving this plan forward is providing these amenities while balancing the community's need for natural and passive spaces, and habitat for the area's wildlife.

### What is a Biodiversity Corridor?

In 2014, the City of Surrey developed a city-wide Biodiversity Conservation Strategy as part of Surrey's objective to be a healthy, livable and sustainable city. The goal of the Strategy is to preserve, protect, and enhance Surrey's biodiversity.



The corridor shown in the context map is a linkage (conceptualized above) between larger biodiversity hubs in the City, along which wildlife either currently migrate or may have the option to migrate in the future.



# Planning Context

Each of the park sites represent the primary park site for their respective Neighbourhood Concept Plan (NCP) area. Given their close proximity to each other, as well as the fact they are both advancing into construction in unison, allows us the opportunity to develop them complementary to one another rather than as stand alone components.



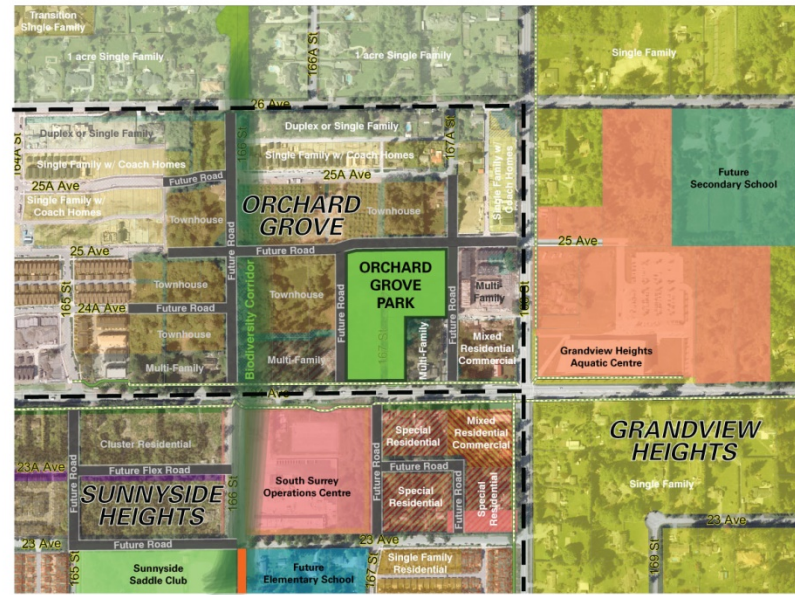
### Sunnyside Heights NCP

Approved in 2010, the Sunnyside Heights NCP spans the area south of 24 Avenue between 161A Street / the BC Hydro powerline corridor in the west and 168 Street in the east. Seven years into construction, we are nearing 65% build out, mostly concentrated on the west half of the NCP area around Oak Meadows Park. The elementary school site has now been confirmed by the Ministry of Education. As development continues to accelerate in the centre and eastern half of the NCP, the Sunnyside Saddle Club site is well positioned, and of an adequate size, to provide the bulk of recreational needs for this growing community.



### Orchard Grove NCP

Approved in 2012, the Orchard Grove NCP spans the area between 24 and 26 Avenues and 164 and 168 Streets. In the past five years, this small NCP area has seen rapid transformation with 90% either already constructed or in the process of being approved. With a large amount of density proposed for this NCP, the park site was strategically chosen to preserve the most viable stand of healthy mature forest. With this, the focus of this park's role in the NCP area is on preserving viable habitat and a natural area in proximity to the Biodiversity Corridor, while also providing a venue for complimentary recreational opportunities.



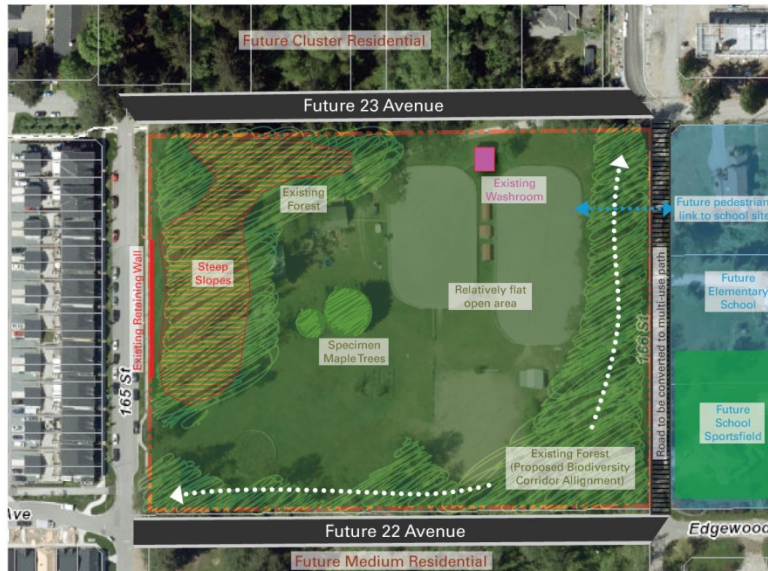
# Site Analysis

Each park site provides unique natural features and opportunities for public amenities and recreation. Here are some of the opportunities and constraints of each site:



### Sunnyside Heights NCP

Located in the 2200 block between 165 and 166 Street, this 3.8 hectare (9.6 acre) park is mostly flat open space with native vegetation around the perimeter. Currently the site is a former equestrian riding facility on City land. This site presents the best opportunity for providing much needed active recreation opportunities such as a sports field, sports courts, a playground, and a walking loop.



### Orchard Grove NCP

Located on all sides of the cul-de-sac of 167 Street north of 24 Avenue is the future home of Orchard Grove Park. This 2.3 hectare (5.8 acre) park gently slopes north and is approximately 50% vegetated with mature coniferous forest in good health. This site presents an excellent opportunity to retain a significant natural area asset in a neighbourhood undergoing rapid urban development. It is anticipated that tree-shaded lawns and natural play opportunities for games like hide & seek will make this park a memorable destination for passive recreation in the area.



# Parks and Your Health

The extent to which we harmonize the design of our urban environment with our natural environment is fundamental in determining the outcome of our public health and well-being. Parks and open space improve air quality, promote mental health, provide access to nature, and encourage a healthy lifestyle. Indirect benefits include better self-esteem, more energy, and reduced stress. The following are ways that parks and open spaces can bring positive outcomes to your day-to-day life:

## Mental & Social Well-being



Parks and green space provide a therapeutic setting for people with mental health disorders, such as clinical depression. There is strong evidence linking the presence of nature with mental and social well-being.

- A walk in a forest can improve mood and reduce levels of stress by producing feelings of comfort, calm and refreshment.
- The presence of green space within 1 kilometre of the home has been linked to a lower prevalence of anxiety disorders and depression.
- Views and sounds of wildlife and green space are known to induce positivity, empathy, and happiness.

## Healthy Ecosystems



The preservation of open space and natural areas protects biodiversity. Current evidence supports a relationship between biodiversity preservation and measures of ecosystem function such as improved water quality, soil fertility, and plant pollination.

- Natural areas provide valuable habitat to local wildlife and are an important component of the City's Biodiversity Conservation Strategy.
- Parks help clean and cool the air, reducing pollution and the urban heat island effect.
- Parks slow the run-off of precipitation, reducing sudden surge impacts on creeks and aquatic life downstream.
- Parks promote groundwater recharge, reducing the effects of drought.

## Children's Well-being



Children benefit greatly from regular exposure to nature and outdoor environments, particularly unstructured outdoor play and exploration.

- Homes with more natural surroundings significantly improve a child's natural attention capacity and memory retention.
- Unstructured play in a natural environment stimulates a child's ability to problem-solve, and accelerates their development of self-assessing risky behaviors.
- When instilled from a young age, healthy habits of being active pay the greatest benefits to a person's life and have the best staying power into their future.

## Active Lifestyle



A neighbourhood designed for access to parks is one of the strongest predictors of a physically active population. Parks, greenways, and supporting pathway networks are part of a larger regional green network supporting active transportation. There are proven links between active transportation and public health and safety.

- Exposure to green space has been shown to increase a population's average physical activity and energy, while reducing the prevalence chronic diseases.
- People who typically walk, bike, or use transit to get to work are statistically less likely to be overweight compared to those who commute by car.
- Parks and pathways increase neighbourhood mobility and enable more independent living as we age.
- Compared to car commuters, cyclists and walkers are more likely to have very good or excellent health.

AMENITIES

# Proposed Park Amenities

Sunnyside Saddle Club will be a community level park, which means it will have amenities that serve residents in the South Surrey community. Orchard Grove Park will be a neighbourhood level park, which means it will have amenities that serve residents in the surrounding neighbourhood.

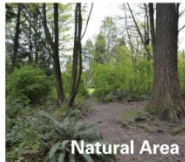
With this in mind, what kind of amenities would you like to see in these new parks? Tell us by putting a dot on the images below.

## Sunnyside Saddle Club

### ACTIVE RECREATION



### PASSIVE SPACES



### STRUCTURES & FACILITIES

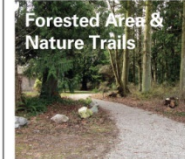


## Orchard Grove Park

### ACTIVE RECREATION



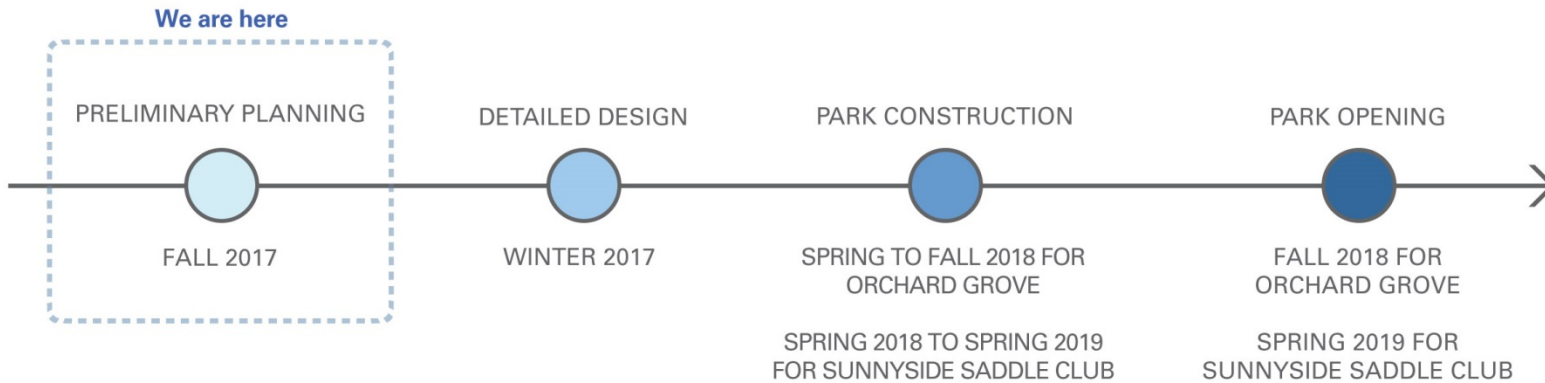
### PASSIVE SPACES



### STRUCTURES & FACILITIES



# What is next?



## BEFORE YOU LEAVE

Remember to fill out a comment form. Your suggestions and ideas are greatly appreciated and will form the basis for our detailed design phase going forward. An online version of the comment form is available on our website at [www.surrey.ca/newparks](http://www.surrey.ca/newparks) for residents unable to attend this open house.

**Please ensure you provide your feedback by December 22 in order to have it considered.**

City staff are available to provide you with information and to answer any questions you may have about these two park projects.

## WANT TO STAY INVOLVED?

Provide us your email address on the comment form to stay up to date and to be the first to know when there are new updates.

Otherwise, for ongoing information or for any questions you have going forward, be sure to regularly check in with us in the following ways:

- Visit [www.surrey.ca/newparks](http://www.surrey.ca/newparks)
- Email [parksrecculture@surrey.ca](mailto:parksrecculture@surrey.ca)
- Call 604-501-5050

## Orchard Grove Park – Two Concept Designs

# Welcome!

## Design Update on Orchard Grove Park

We are pleased you could join us for a design update on Orchard Grove Park.

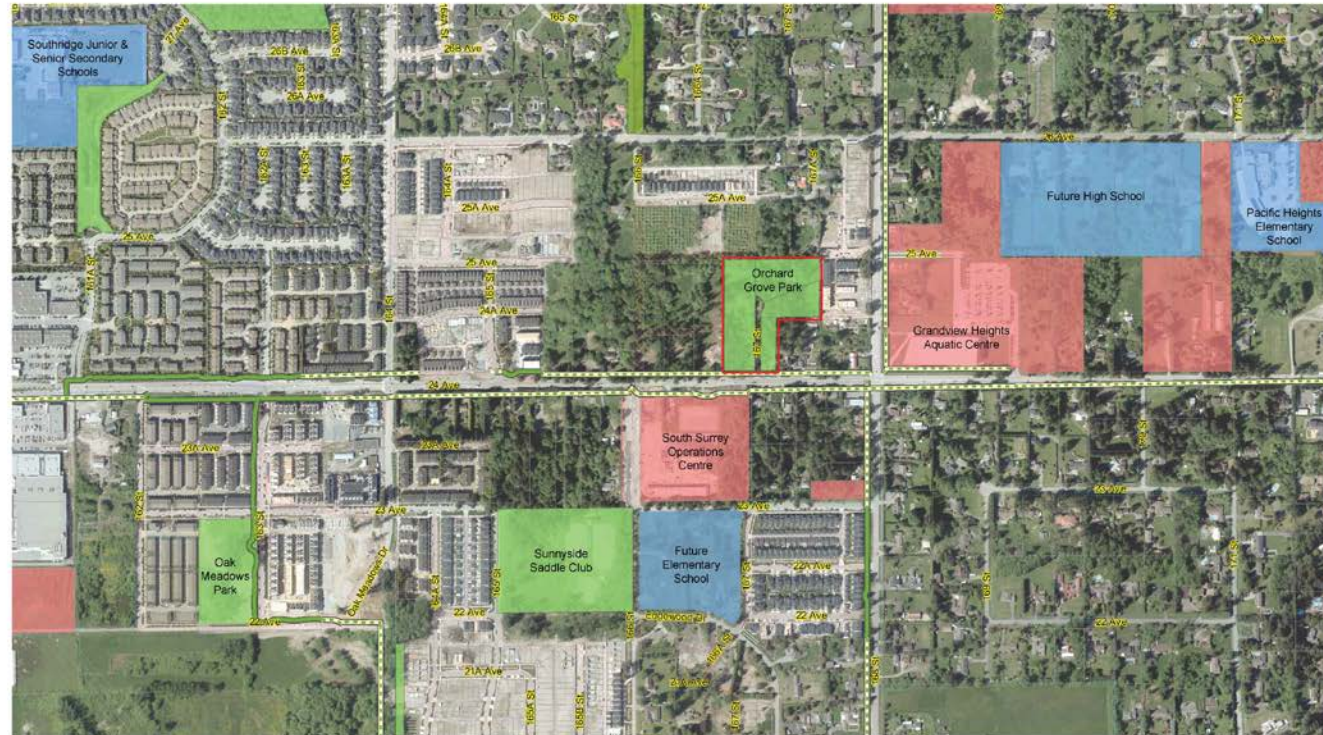
This update focuses on presenting two options for Orchard Grove Park. The designs are based on input received at the initial kick-off open house held November 30, 2017 at Kensington Prairie Community Centre.

Please sign in, take a comment form, and view the display boards. Staff are available to provide information and answer questions. Please take a moment at the end to share your thoughts on the design direction you prefer. We would appreciate hearing from you via our comment form.

### Show Us Where You Live

Place a sticker approximately where you live on the map.

If you live outside the area shown on the map, place your sticker in the white space around the map in the direction of your home.



# Planning Context & Site Analysis Recap

The Orchard Grove Park site represents the primary park site for the Orchard Grove Neighbourhood Concept Plan (NCP) area.

## Orchard Grove NCP

Approved in 2012, the Orchard Grove NCP spans the area between 24 and 26 Avenues and 164 and 168 Streets. In the past five years, this small NCP area has seen rapid transformation with 90% either already constructed or in the process of being approved. With a large amount of density proposed for this NCP, the park site was strategically chosen to preserve the most viable stand of healthy mature forest. With this, the focus of this park's role in the NCP area is on preserving viable habitat and a natural area in proximity to the Biodiversity Corridor, while also providing a venue for complimentary recreational opportunities.



## Orchard Grove Park Site Analysis

Located on all sides of the existing cul-de-sac of 167 Street north of 24 Avenue is the future home of Orchard Grove Park. This 2.3 hectare (5.8 acre) park gently slopes north and is approximately 50% vegetated with mature coniferous forest in good health. This site presents an excellent opportunity to retain a significant natural area asset in a neighbourhood undergoing rapid urban development. It is anticipated that tree-shaded lawns and natural play opportunities for games like hide & seek will make this park a memorable destination for passive recreation in the area.



## DESIGN DIRECTIONS

Below are two options for the design of Orchard Grove Park. Both options maintain the same pathway circulation design that includes a loop for walking laps. Each option also preserve almost all of the existing forest on the site, and includes an orchard to give a nod to the area's fruit production history.

### Option 1

Option 1 places the bulk of activity at the northeast corner of the park. The playground and picnic zone in this concept is nestled into the shade of the towering conifers and would be a cool oasis in the summer. Being contained within the walking loop, the playground lends itself well to regular check-ins with the kids at play while parents get in some quick laps. The quieter south end of the park is left as a mix of open lawns and fringe meadows.



### Option 2

Option 2 clusters the activity around the most important path intersection in the park, as well as the orchard. The proximity between the picnic zone and the orchard also reinforces the farm-to-plate relationship between where food is grown and where it is enjoyed. In this option, the playground is still adjacent to the walking loop but makes better use of the centre of the park, while opening up the northeast corner for more lawn games like frisbee or bocce.

