

NO: R113

COUNCIL DATE: May 28, 2018

REGULAR COUNCIL

TO: **Mayor & Council**

DATE: **May 24, 2018**

FROM: **General Manager, Parks, Recreation & Culture**

FILE: **6140-20/F**

SUBJECT: **Francis Park Amenity Upgrades – Playground and Pavilion**

RECOMMENDATION

The Parks, Recreation & Culture Department recommends that Council:

1. Receive this report for information; and
2. Endorse the concept plan for amenity upgrades at Francis Park, as detailed in Appendix “I”.

INTENT

The intent of this report is to inform Council of the proposed concept plan for a playground and pavilion in Francis Park and to obtain Council approval to proceed with the construction of the proposed concept plan.

BACKGROUND

Francis Park is a 1.71 hectare (4.21 acre) neighbourhood park located within the Fleetwood Town Centre and adjacent to the Fleetwood Community Centre (see map Appendix “II”). The site, located between 159 Street and 160 Street, north of 83 Avenue, was originally developed in 2009 with a walking loop, outdoor fitness equipment and seating areas. Since then the Fleetwood Community Centre, Fleetwood Community Association and community members have expressed a need for a playground and pavilion/bandstand in the park.

DISCUSSION

The City presented preliminary project information, Appendix “III”, and a preliminary concept plan, Appendix “IV”, at a public Open House on January 30, 2018 at the Fleetwood Community Centre. Feedback, Appendix “V”, was collected through comment forms at the Open House and an online survey in late February, 2018. The community was in support of the addition of both the pavilion (79%) and playground (80%) to the park, and the majority of respondents indicated their support for the overall design concept.

Francis Park Playground Concept Plan and Pavilion Location

A detailed concept plan for the playground, (Appendix “I”), was presented to community stakeholder groups and posted on the Francis Park webpage in mid-March, 2018. The detailed concept demonstrates the playground having a variety of play opportunities and multiple accessible/inclusive elements. Play equipment is being selected to primarily suit tots and preschool children, as there are multiple preschools/daycares in the area, with a few opportunities for youth as well. A berm, trees, and a variety of seating opportunities will provide park users with spaces for gathering. Some community groups expressed concerns about the playground being located on the east end of the park and being in close proximity to the pavilion.

The rationale behind locating the playground and pavilion in the proposed location includes:

- There are good sight lines from 160 Street which will create a safer park environment;
- They are both easily accessible from the Fleetwood Community Centre;
- There are limited options for alternative locations due to the future Community Centre expansion; and
- Retaining vehicle access from the Community Centre onto the lawn for event and programs.

The proposed adjacency of the pavilion and playground serves a dual purpose by:

- Creating shaded seating for playground users; and,
- Mitigating potential unsafe and negative uses by keeping active amenities in close proximity (i.e. - where the people are).

The City is updating the design to accommodate residents’ concerns by shifting the orientation of the Pavilion and developing a gathering space on the west end of the park. The Parks, Recreation & Culture Department is prepared to commence work on the playground with preliminary site works starting in early June 2018 and completing the playground prior to the Fleetwood Festival on September 8, 2018. The budget for this project is estimated at \$650,000.

The concept plan for amenity upgrades at Francis Park was scheduled to go to the Parks, Recreation & Sport Tourism Committee for review in May however; the Committee was unable to meet. The recommendation to endorse the concept plan has come directly to Council to ensure the timely completion of the project.

FUNDING

Funding for this project is available in the Fleetwood Town Centre NCP.

SUSTAINABILITY CONSIDERATIONS

Construction of a playground and pavilion at Francis Park will support the objectives of the City’s Sustainability Charter 2.0. In particular, this work relates to the theme of Built Environment & Neighbourhoods and assists in meeting the following Desired Outcomes (DO):

- Neighbourhoods and Urban Design : DO 1: “Surrey is compromised with distinct, diverse and compact town centres with an engaging public realm”;
- Neighbourhoods and Urban Design : DO 8: “The built environment enhances quality of life, happiness and well-being”; and

- Neighbourhoods and Urban Design : DO 15: “All new buildings, public places and outdoor spaces are welcoming, safe and universally accessible”.

CONCLUSION

The Parks Division will design and construct a playground and pavilion in Francis Park. The addition of these amenities is supported by the community. Further community feedback about the orientation of the pavilion and the addition of a gathering space is being integrated into an updated detailed concept plan. Construction of the playground will begin in early June 2018, with completion by the Fleetwood Festival on September 8, 2018.

Based on the above discussion, it is recommended that Council endorse the Concept Plan for amenity upgrades at Francis Park, as detailed in Appendix “I”.

Laurie Cavan
General Manager,
Parks, Recreation & Culture

Appendix “I” – Francis Park Detailed Concept Plan

Appendix “II” – Francis Park Location Map

Appendix “III” – Francis Park Preliminary Project Information

Appendix “IV” – Francis Park Preliminary Concept Plan

Appendix “V” – Francis Park Community Feedback

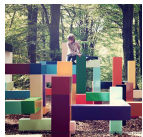
FRANCIS PARK DETAILED CONCEPT PLAN

EXAMPLES



A PING PONG

- multi-age
- popular in community centre
- seating nook



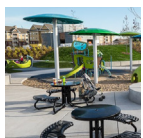
B WOOD CLIMBER/
PARKOUR ELEMENTS

- tot sized wood climbing elements
- balance beam
- somersault bar
- platforms



C LOG STEPPERS

- lava game (don't step on the ground)
- lead from one area to another and through playground



D SAND PLAY

- concrete curb or robinia log edging
- shaded by and located near mature trees
- surrounded by grass
- bench nearby
- sand table



E EARTH BERM

- 0.75 - 1.00m tall
- Max 15% slope
- act as barrier for playground
- natural play elements, like rock steps



F FORMAL SEATING

- concrete retaining seat wall, with bench tops
- bench with end and middle arm rests
- recess underneath seat
- straight for ease of construction/cost effective



G PICNIC / BENCH

- accessible picnic table
- benches

Francis Park Playground and Pavilion - Detailed Concept Plan -



* Images are for conceptual use only as specific products have not yet been selected.

EXAMPLES



H DUNE BUGGY

- imaginative and exploratory play
- climbing (for tots)



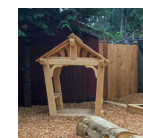
I LARGE SPINNER

- central focal element
- accessible
- many ways to play: swinging, spinning, pushing, climbing, sitting, observing
- on rubber play surfacing for best accessibility



J SWINGS

- tot/preschool and youth swings
- dish swing for all ages (accessible)
- 1 belt, 1 bucket seat
- facing other play equipment and open lawn



K TOT HOUSE

- imaginative and exploratory play
- small slide for tots
- wood/metal combo
- open sitelines



L YOUTH
STRUCTURE

- small tower structure with slide, rope/net climber and multiple ways up
- open for sitelines
- stainless steel slide



M MUSIC

- 1 Xylophone
- 2 Drum
- 3 Chimes
- ensure music isn't too loud
- tot/preschool size
- position in semicircle

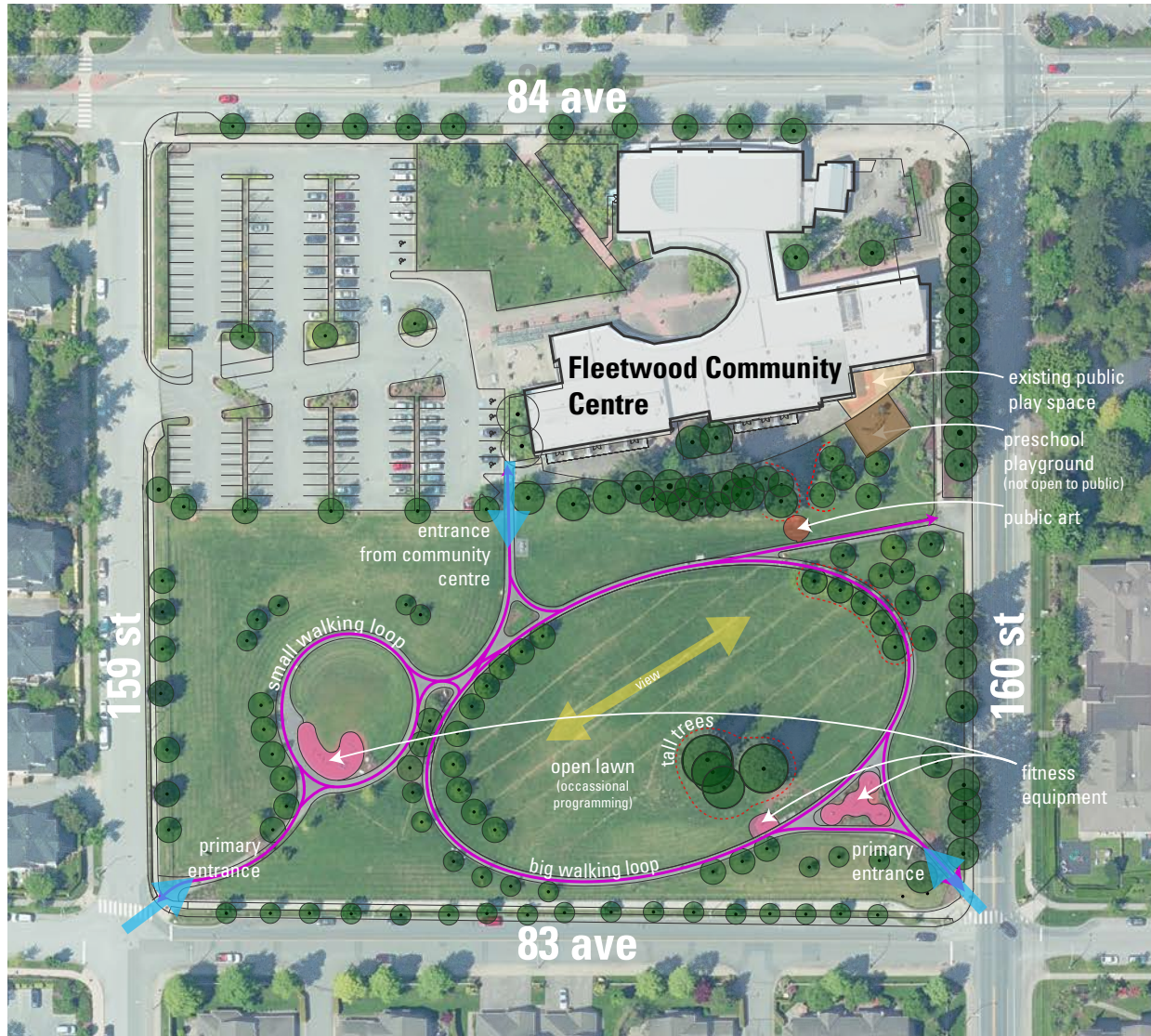
FRANCIS PARK LOCATION MAP



FRANCIS PARK PRELIMINARY PROJECT INFORMATION

Site Analysis

Since Francis Park is already developed and actively used, there are considerations to take into account when designing the playground and performance space.



Opportunities

- playground and performance space will support Community Centre programs and the Fleetwood Community Festival
- multifunctional performance space
- shade from large coniferous trees
- open lawn for audience space

Constraints

- playground and performance space should be near and connect to preschool playground and Community Centre respectively
- care required around root zones of all trees
- buffer space required between walking loop and playground because loop is very active
- orientation is limited (possible sun blindness for performers or audience)

Potential Playground Elements

The Fleetwood Community Centre and the community have expressed interest in having a playground in Francis Park.

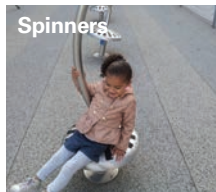
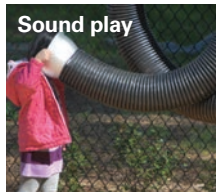
We propose a playground with multiple play zones, including tot, youth, accessible/inclusive and multigenerational play elements.

With this in mind, what kind of elements would you like to see in this playground? Tell us when filling out your comment form.

Youth Elements



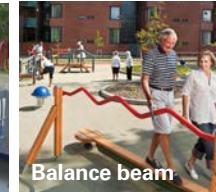
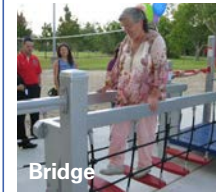
Tot Elements



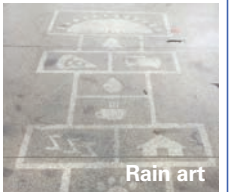
Accessible Elements



Multigenerational Elements



Other Elements

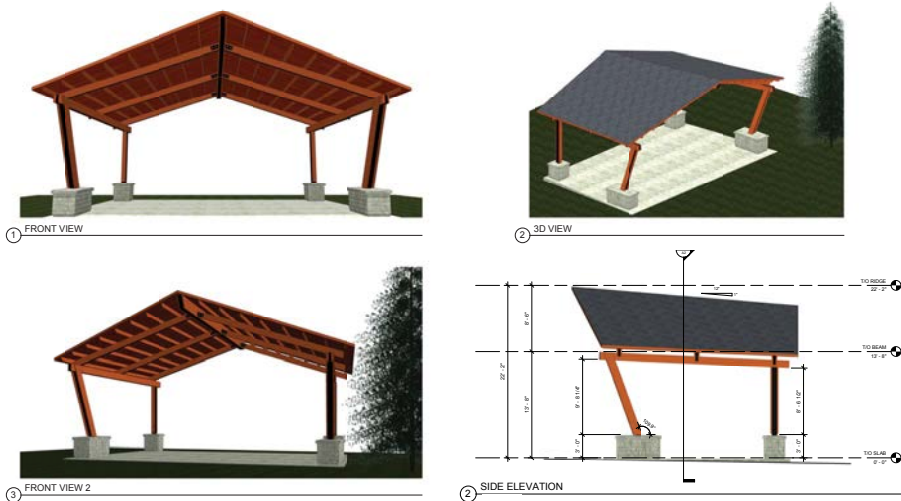


Bandstand History

Where it all began

In 2015, the Fleetwood Community Association and community members approached the City about developing a Bandstand in Francis Park. They wanted a small structure that would support intimate programs such as a weekly seniors meet up group to play music and socialize. They proposed the preliminary design and technical considerations below.

Proposed preliminary design



Technical Considerations

- 40' x 24' at-grade slab floor
- minimal electrical service
- vandal-proof design
- no bird roosting areas
- gutter, splash pan & water leader
- similar aesthetic to existing Trellis
- wood and steel roof structure
- hidden wiring
- granite clad columns under 3' tall to provide sight lines for people sitting in a chair

Community Feedback

When reaching out to the community, the Fleetwood Community Association received the following feedback which will be taken into consideration in the detailed design and coordination of events.

Support

- "provide many opportunities for the community, young and old, to gather and celebrate the cultural and social fabric of the neighbourhood"
- "it will truly benefit our seniors and the Fleetwood community as a whole"
- "this Bandstand aligns well with the general uses and purpose of this park and would be a good cultural addition to the community"

Concerns

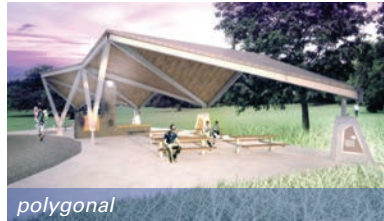
- vandalism or undesirable use at night
- operational management challenges
- frequency of use
- volume control
- types of music and events
- parking/traffic issues (congestion and increased volume) during event times

Pending public approval, staff will carry out detail design incorporating feedback.

Performance Space Ideas

Building on the 2015 design presented by the Fleetwood Community Association and the community's feedback, we propose a multifunctional structure for small to medium performances and social/community gatherings.

POSSIBLE STYLES *What architectural style do you like?*



POSSIBLE CHARACTERISTICS *What characteristics would you like to see included in the performance space?*

SIZE

small size
medium size

STRUCTURE

permanent structure
raised stage
stairs double as seating
accessible ramp
acoustic structure (amplification)
storage
electrical & conduit for wiring
built-in seating
surface game pattern on floor (i.e. chess)
double sided

POTENTIAL PROGRAMS

Seniors Jammers
Community gatherings
Fleetwood Community Festival
Theatre performances
Live music
Movie night
Farmers Market
Seasonal events (i.e. Remembrance Day)
Games gatherings
Tea parties

OTHER

north or west facing
(to avoid sun blindness for performers)
sheltered from the elements
temporary loading/unloading zone

FRANCIS PARK PRELIMINARY CONCEPT PLAN

Concept Plan



Playground

North east corner of the open lawn

- a) easy to access from Community Centre & pre-school
- b) shaded by mature trees
- c) allows large half of the lawn open to remain

Possible Characteristics:

- play zones
- tot, youth, accessible/inclusive and multigenerational elements
- separated from walking loop by berm

Performance Space

OPTION 1

- South side of lawn
- a) nestled by mature trees
- b) separate from playground
- c) close to road for loading/unloading

OPTION 2

- East side of lawn
- a) west facing (potential sun issue)
- b) close to playground (use as shaded seating for playground)

OPTION 3

- North side of lawn
- a) easy access from Community Centre
- b) separate from playground

Possible Characteristics:

- permanent structure
- shelter from wind and rain
- raised stage
- structural form that amplifies sound
- power
- hanging bar for lights with power
- ramp & stairs
- multi-functional
- built-in seating
- storage
- temporary loading zone
- surface game pattern on stage floor

FRANCIS PARK PRELIMINARY COMMUNITY FEEDBACK

Francis Park Playground and Pavilion

- Community Feedback -

The City presented preliminary project information and a preliminary concept plan at a public Open House on January 30, 2018 at the Fleetwood Community Centre. The following feedback was collected through comment forms at the Open House and an online survey throughout late February and early March. The community was in support of both the pavilion and playground and the majority of respondents indicated their support for the overall design concept.

OVERALL RESPONSE	PAVILION	PLAYGROUND	GENERAL CONCEPT PLAN
<p>TOTAL RESPONSES 131 Open House 23 Online Survey 108</p>	<p>PAVILION LOCATION Option 1 (South) 27% Option 2 (Center/east) 9% Option 3 (North) 59% Alternative suggestion 13.6% Unsure 4.5%</p>	<p>TOP 7 Play Equipment Pieces:</p> <ol style="list-style-type: none"> 1) Slide 2) Casual seating 3) Climbing nets 4) Accessible swing 5) Structure 6) Bridge structure 7) Tot house <p>Other suggestions: zipline, workout equip. (i.e. Bear Creek), water splash park, sand play</p>	<p>GENERAL LIKES</p> <ol style="list-style-type: none"> A) Serve all ages B) Outdoor venue space C) Promotes gathering D) Good addition to the community E) Noise/sound away from homes F) Nice to have beside FCC G) Serve growing community
<p>PAVILION Yes 79% No 8% Unsure/no response 13%</p>			
<p>PLAYGROUND Yes 80% No 9% Unsure/no response 18%</p>			<p>WHAT COULD BE DONE BETTER</p> <ol style="list-style-type: none"> A) Face the pavilion North B) Needs more places to sit C) Fence around playground D) Playground near parking lot E) No need for playground b/c fitness equipment is being used as playground F) No noise from performance space G) No pavilion