



<i>Contractor</i>	<i>Tendered Amount with GST</i>	<i>Corrected Amount</i>
1. ICE Development Ltd.	\$660,448.16	No Change
2. Triahn Enterprises Ltd.	\$654,719.10	\$666,106.35
3. RJS Construction Limited	\$678,187.24	\$683,048.39
4. Wood Projects Limited	\$800,656.50	No Change
5. Arsalan Construction Limited	\$827,400.00	No Change
6. Wilco Civil Inc.	\$942,846.45	No Change
7. LaFarge Canada Ltd.	\$970,119.15	No Change
8. Canadian Landscape & Civil Services Ltd.	\$1,122,194.18	No Change

## EVALUATION

The City's Project Team reviewed the tender submissions for accuracy, completeness and comparable work experience.

ICE Development Ltd. provided a Bid Bond and a Surety's Consent with their Tender. The Surety's Consent confirms that ICE Development Ltd. will be able to provide a Performance Bond and a Labour & Material Payment Bond, both in the amount of 50% of the contract price.

Construction of the Project will commence in early May, and it is scheduled to be substantially completed by June 28, 2018.

## FUNDING

Funding for this Project is available within the approved Civic Facilities 2018 Capital Budget.

## SUSTAINABILITY CONSIDERATIONS

The City recognizes the value of creating a sustainable facility. This Project aligns with the following Desired Outcomes (DO) in the Sustainability Charter 2.0.

### Built Environment and Neighbourhoods

**DO8:** The built environment enhances quality of life, happiness and well-being

**DO11:** Surrey is at the forefront of sustainable and restorative building design and technology.

**DO12:** Retrofits and renovations are prioritized over demolition.

**DO14:** Native vegetative cover and natural systems are an integral part of landscaping and the built environment, and provide environmental and health benefits.

## CONCLUSION

Based on the above discussion, it is recommended that Council:

- Award Contract No. 1220-020-2018-001 to ICE Development Ltd. in the amount of \$660,448.16, including GST, for the Elgin Hall Parking Lot Upgrade;
- Set the expenditure authorization limit for Contract No. 1220-020-2018-001 at \$700,000.00, including GST and contingency; and

- Authorize the General Manager, Planning & Development, or his designate, to execute Contract No. 1220-020-2018-001 and related change orders.

*Original signed by*  
Jean Lamontagne  
General Manager, Planning & Development

GS/CA/ss

Appendix "I" Project Drawings

c:\users\ar4\desktop\cr elgin hall\award of contract for elgin hall parking lot upgrade.docx  
03/05/2018 3:18 PM ar

# ELGIN HALL PARKING UPGRADE

SURREY, BC

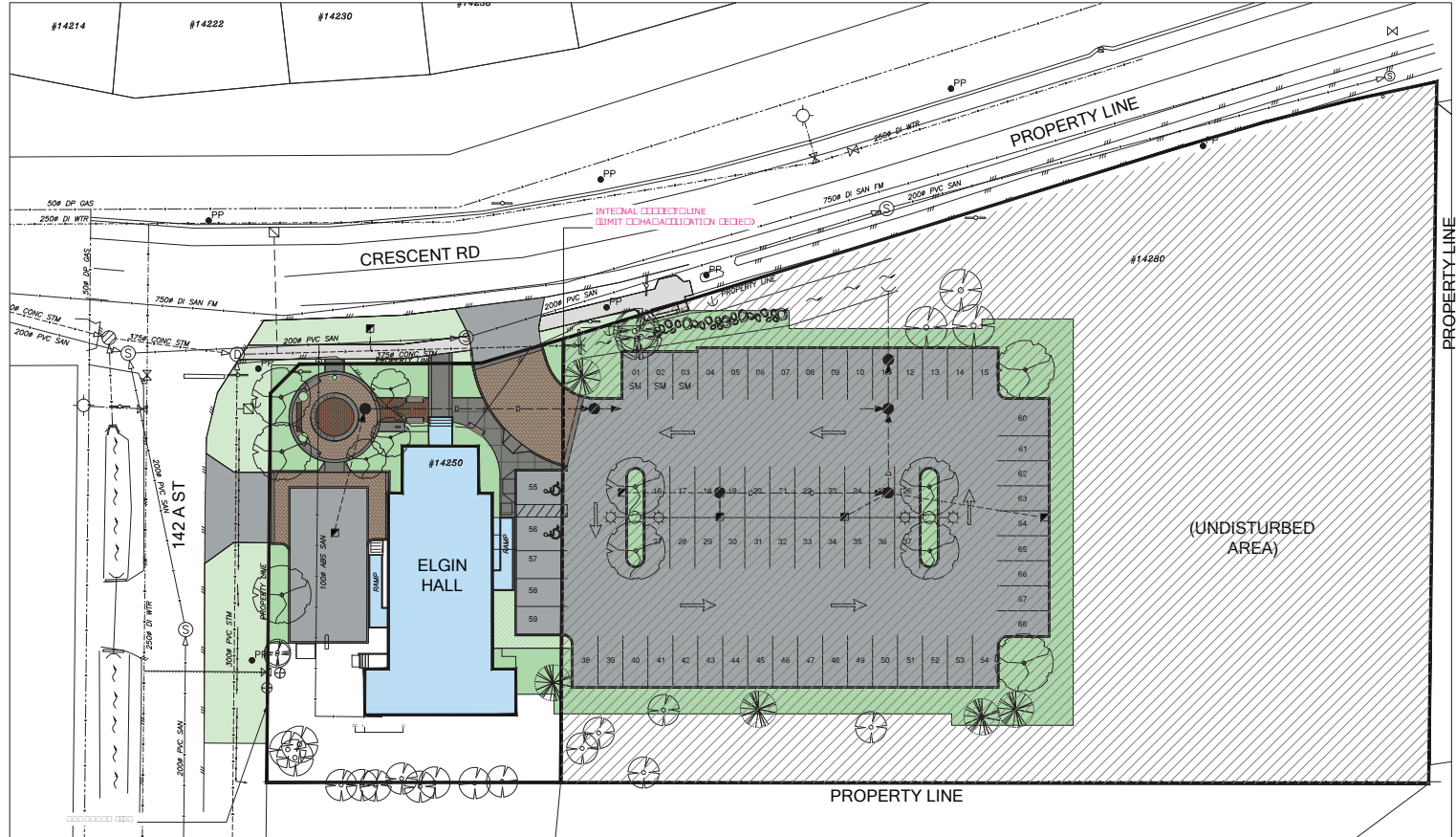
ELGIN HALL ADDRESS: 14250 CRESCENT ROAD, SURREY, BC V4P 1M3

CLIENT: CITY OF SURREY  
 CLIENT ADDRESS: 13450 104 AVE, SURREY, BC, CANADA V3T 1V8

## DESIGN DEVELOPMENT

### DRAWING INDEX

Sheet No.	Sheet Name
L0	LANDSCAPE COVER SHEET
L1	LANDSCAPE NOTES
L2	LANDSCAPE PLAN
L3	LANDSCAPE PLANTING PLAN - WEST
L4	LANDSCAPE PLANTING PLAN - EAST
L5	LANDSCAPE DETAILS 1
L6	LANDSCAPE DETAILS 2
L7	LANDSCAPE DETAILS 3



1:1000 1:500 1:250 1:125

1:250

REV	DATE	DESCRIPTION	BY
6	FEB 14, 2018	HAP UPDATE	LN

LEGAL DESCRIPTION

SURVEY BENCHMARK

CONSULTANT

**ISL Engineering**  
 and Land Services

SUITE 301, 2038 - 65 AVENUE  
 LANGLEY, BRITISH COLUMBIA V2Y 2X3  
 (604) 530-2288 FAX: (604) 530-1132



CLIENT

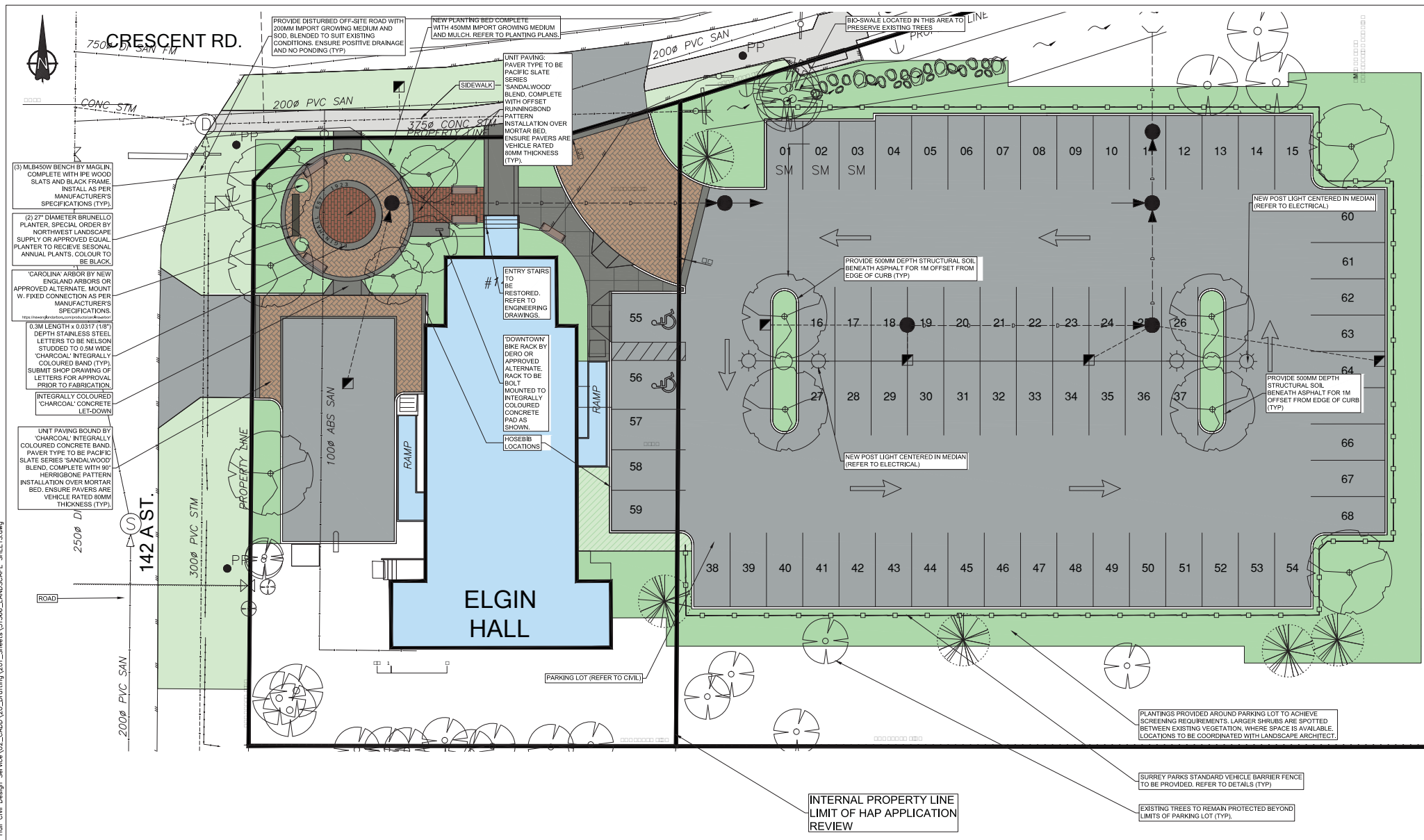
**City of Surrey**  
 13450 104 Ave. Surrey, BC,  
 Canada V3T 1V8

TITLE **ELGIN HALL PARKING UPGRADE**  
 LANDSCAPE COVER SHEET

SCALE	HOR: 1:200 VERT: n/a	DATE (YYYY-MM-DD)	18-02-14	SURREY PROJECT NUMBER	15-0411
DESIGNED	JL	CONSULTANT PROJ. NO.	31566	SURREY DRAWING NUMBER	
DRAWN	LN	DWG. NO.	L0	REV	6
REVIEWED	JL				

DESTROY ALL PRINTS BEARING PREVIOUS NUMBER

H:\Projects\151566\_C03\_Elgin\_Hall\_Civil\_Design\_Service\102\_CADD\102\_Drafting\101\_Sheets\151566\_LANDSCAPE\_SHEETS.dwg

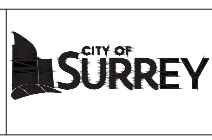


REV	DATE	DESCRIPTION	BY
5	FEB 14, 2018	HAP UPDATE	LN

LEGAL DESCRIPTION	
SURVEY BENCHMARK	

CONSULTANT

SUITE 301, 20338 - 45 AVENUE  
LANGLEY, BRITISH COLUMBIA, V2Y 2X3  
(604) 530-2268 FAX: (604) 530-1132



CLIENT

**City of Surrey**  
13450 104 Ave. Surrey, BC,  
Canada V3T 1V8

TITLE **ELGIN HALL PARKING UPGRADE**  
LANDSCAPE PLAN

SCALE	HOR. 1:100 VERT. N/A	DATE (YYYY-MM-DD)	18-02-14
DESIGNED	LN	CONSULTANT PROJ. NO.	31566
DRAWN	JS	DIVL. NO.	L2
REVIEWED	JL	REV.	6

SURREY PROJECT NUMBER  
**15-0411**

SURREY DRAWING NUMBER

**HARDSURFACE MATERIALS LEGEND**

	1	6	Concrete
	4	6	Blend, complete with 90° herringbone pattern installation
	4	6	Concrete with 10mm aggregate
	1	6	Concrete

**LANDSCAPE ELEMENTS LEGEND**

	2	7	Planting bed
	1	7	Planting bed
	3	7	Planting bed
	4	7	Planting bed
	3	5	Planting bed
	6	5	Planting bed

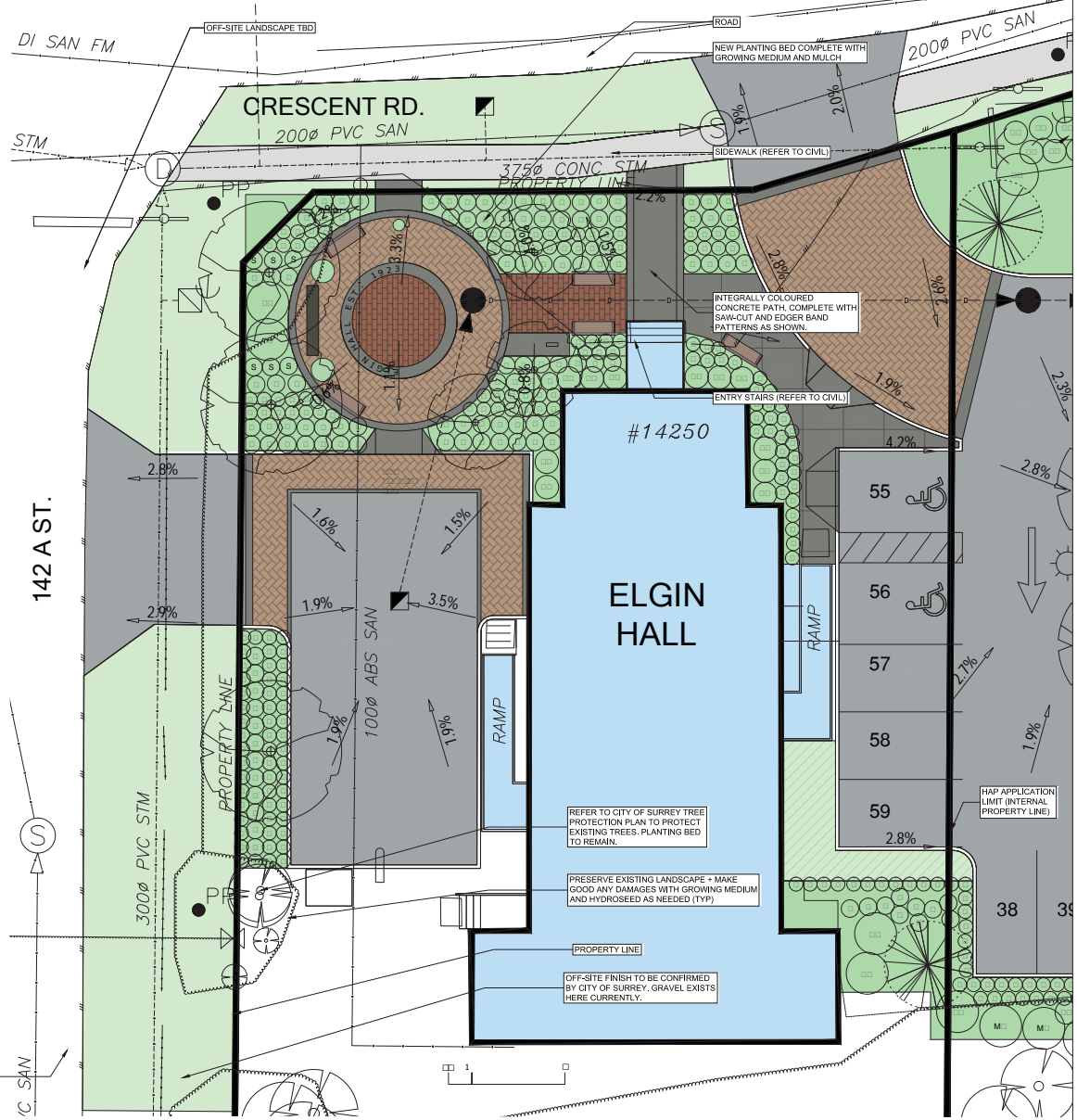
**TREE KEY**



**TREES AND PLANTINGS**

KEY	QTY	BOTANICAL NAME	COMMON NAME	SIZE	SPACING (O.C.)
<b>Trees</b>					
QC	05	Quercus coccinea	Scarlet Oak	B&B: 8cm caliper, 1.8m standard, specimen	Plant as shown
QS	05	Quercus robur x quercus alba "Crimschmidt"	Crimson Spire Oak	B&B: 8cm caliper, 1.8m standard, specimen	Plant as shown
VW	05	Pinus flexilis "Vanderwolf"	Vanderwolf's Pine	B&B: 3m Ht., specimen	Plant as shown
<b>Shrub plantings and groundcovers</b>					
CA	02	Peek-a-boo Camellia	Peek-a-boo Camellia	#3 Pot, full	1.8m o.c.
CS	122	Cornus sericea	Red dogwood	#3 Pot, full; min 3 stems from base	1.8m o.c.
SY	04	Syringa x Bloomingang	Bloomingang	#3 Pot, full	1.8m o.c.
S	152	Double Play® Blue Kazoo™ Spiraea	Double Play® Blue Kazoo™ Spiraea	#2 Pot, full	0.75m o.c.
E	167	Boxleaf euonymus	Boxleaf euonymus	#2 Pot, full	0.60m o.c.
I	190	Blue Star Creeper	Blue Star Creeper (lawn substitute groundcover)	SP4	0.30m o.c.
K	262	Kinnikinnick	Kinnikinnick	#1 Pot, full	0.60m o.c.
MG	5	Myrica gale	Native wax myrtle	#3Pot, full; to be field located with Land, Arch.	Approx 1.8m o.c.
PL	13	Native mock-orange	Native mock-orange	#3Pot, full; to be field located with Land, Arch.	Approx 1.8m o.c.
RN	122	Nutkana Rose	Nutkana Rose	#2 Pot, full	1.0m o.c.
L	9	Lilipoe muscari	Lily turf	#2 Pot, full	0.5m o.c.
<b>Entry lawn</b>					
	110m2	Provide chaffer beetle resistant sodded lawn, over 150mm of imported growing medium; compliant with Canadian Landscape Standards "Level 2L" lawn mix Sod to be from Western Turf Farms or approved alternate supplier.			

- \* All tree locations to be staked for review. See planting notes.
- \* Trees to receive a minimum of 600mm of growing medium, at a 300mm depth.
- \* Shrubs to receive a minimum of 450mm depth import growing medium, compliant with "Level 2P" growing media definitions, as per Canadian Landscape Standards
- \* Lawn and/or lawn substitutes to receive 150mm depth import growing medium, compliant with "Level 2L" growing media definitions, as per Canadian Landscape Standards



LEGAL DESCRIPTION	CONSULTANT	CLIENT	SEAL	SCALE: HOR. 1:100 VERT. 1:50	DATE (YYYY-MM-DD) 18-02-14	SURREY PROJECT NUMBER 15-0411
SURVEY BENCHMARK		City of Surrey 13450 104 Ave. Surrey, BC, Canada V3T 1V8		DESIGNED JL	CONSULTANT PROJ. NO. 31566	SURREY DRAWING NUMBER
REV. DATE DESCRIPTION BY	SUITE 501, 2038 - 46 AVENUE LANGLEY, BRITISH COLUMBIA, V3Y 2X3 (604) 530-2288 FAX: (604) 530-1132			DRAWN LN	DWG. NO. L3	
6 FEB 14, 2018 HAP UPDATE LN		TITLE ELGIN HALL PARKING UPGRADE LANDSCAPE PLANTING PLAN - WEST		REVIEWED JL	REV. 6	

DESTROY ALL PRINTS BEARING PREVIOUS NUMBER

H:\projects\31566\_Cos\_Elgin\_Hall\_Civil\_Design\_Services\02\_CADD\20\_Drafting\201\_Sheets\31566\_LANDSCAPE\_SHEETS.dwg