



mural is expected to be installed after the construction hoarding is in place, towards the end of October 2016, and will remain for approximately eighteen (18) months. TransLink will be responsible for the maintenance of the mural throughout this time.

The theme chosen to inspire artists for their concept design for the mural is “Connecting People – Connecting Places” in response to the context of the location.

Supported by the Public Art Advisory Committee, City staff organized and facilitated an information meeting for local artists at Surrey Central Library on Saturday, June 1<sup>st</sup>.

A selection panel was convened that included stakeholders of this site: North Surrey residents, TransLink, and local business, specifically the Century Group who are developing the tower beside the station. This panel was charged with shortlisting three artists, and to make a recommendation of one of their designs. Members of this selection panel include:

**Voting Members:**

Wendy Corneau	Senior Manager, Commercial Programs & Partnerships, TransLink
David Laulainen	Director, Communications & Marketing, Century Group
John Cranswick,	Artist and long-time North Surrey resident

**Non-Voting Panel Members/Advisors:**

Jude Hannah	Public Art Advisory Committee
Debra Rolf	TransLink Public Art Program Planner
Shira Standfield	Beautification Planner
Liane Davison	Visual and Community Art Manager
Anita Green	Public Art Coordinator

**DISCUSSION**

On July 12<sup>th</sup> the selection panel reviewed portfolios from 29 artists and shortlisted 3 qualified artists to develop design concepts. On August 24<sup>th</sup> the panel received concept design presentations from the artists and voted unanimously to recommend the Public Art Advisory Committee support the design “Chrysalis” by Thomas Nelles to become the mural design.

**Public Art Advisory Committee Endorsement**

On September 8<sup>th</sup>, the Public Art Advisory Committee received the recommendations of the selection panel, and unanimously recommended to Council to support undertaking the mural design “Chrysalis” by Thomas Nelles.

**Description of the artwork**

The title of the artwork is “Chrysalis”, the name of the stage in which the caterpillar sheds its cocoon and transforms into a butterfly. The concept is based on the visual metaphor of butterfly. The image of the butterfly has been depicted in art for 3500 years as symbols of the soul, rebirth and is recognized within most world cultures as a metaphor of transformation. Its use in the mural design is intended to serve as a positive and uplifting symbol for the changes occurring in Surrey.

The butterfly has also been the inspiration for many innovative new technologies. For example, the energy efficient structure of the shingled plates causing the iridescent colour of their wings, are inspiring new optical products such as LED readers and the design of new anti-counterfeit technologies.

The artist was born and raised in Surrey, and the design also reflects the artist's personal connection to Surrey, and his hopes for its future. His process for developing this design was informed by his research including conversations with long-time residents, those recently settling in Surrey, seniors and youth as well as people outside of Surrey to better understand their perceptions of Surrey's distinct narrative.

"Chrysalis" is also intended to represent Surrey balancing its agricultural past and present with the development of its urban present and goals for a sustainable future. The design with its digital qualities captures Surrey's identity as one of the top intelligent communities in the world and Surrey's economic diversification and evolution from growing food to growing knowledge.

The design also relates to the history of the SkyTrain in Surrey and its relationship to the City's growth. SkyTrain expansion into Surrey began with the Scott Road Station created for Expo 86 with the other three stations added in following years. Each of the four butterflies represents both a stage in Surrey's history and each SkyTrain station. The butterflies overlay early images of the first buildings in Surrey including the original design of the Surrey Central Station sourced from archive photos. As the design wraps around the site, it reflects from left to right: past, present and future.

The design's brightly coloured and dynamic imagery is intended to provide energy to the area particularly during the winter months, a positive experience for people and to be welcomed and recognizable to Surrey's diverse communities. (Appendix "II" - Recommended Design for the Surrey Central SkyTrain Construction Hoarding).

### **About the artist**

Thomas Nelles grew up in Surrey, and is a graduate of Sullivan Heights Secondary School, where he studied with Marc Pellech. He is a 2016 graduate from the Emily Carr University, and has produced work for exhibition, including a solo exhibition held at the Newton Cultural Centre. Surrey residents may be familiar with the large scale digital mural, "Cultural Synthesis", installed near "The Grove" in Newton Town Centre.

### **SUSTAINABILITY CONSIDERATIONS**

The public art mural will assist in meeting the following desired outcomes contained within the Charter Sub-themes of Neighbourhoods and Urban Design:

- DO 8: The built environment enhances quality of life, happiness and well-being; and
- DO 12: Retrofits and renovations are prioritized over demolition.

The public art mural supports the Community Theme of "Education and Culture" identified in the City's Sustainability Charter:

- DO7: “An enviable and vibrant arts and heritage sector contributes to Surrey’s citizen engagement, enrichment, economy, community livability and civic pride”.

## CONCLUSION

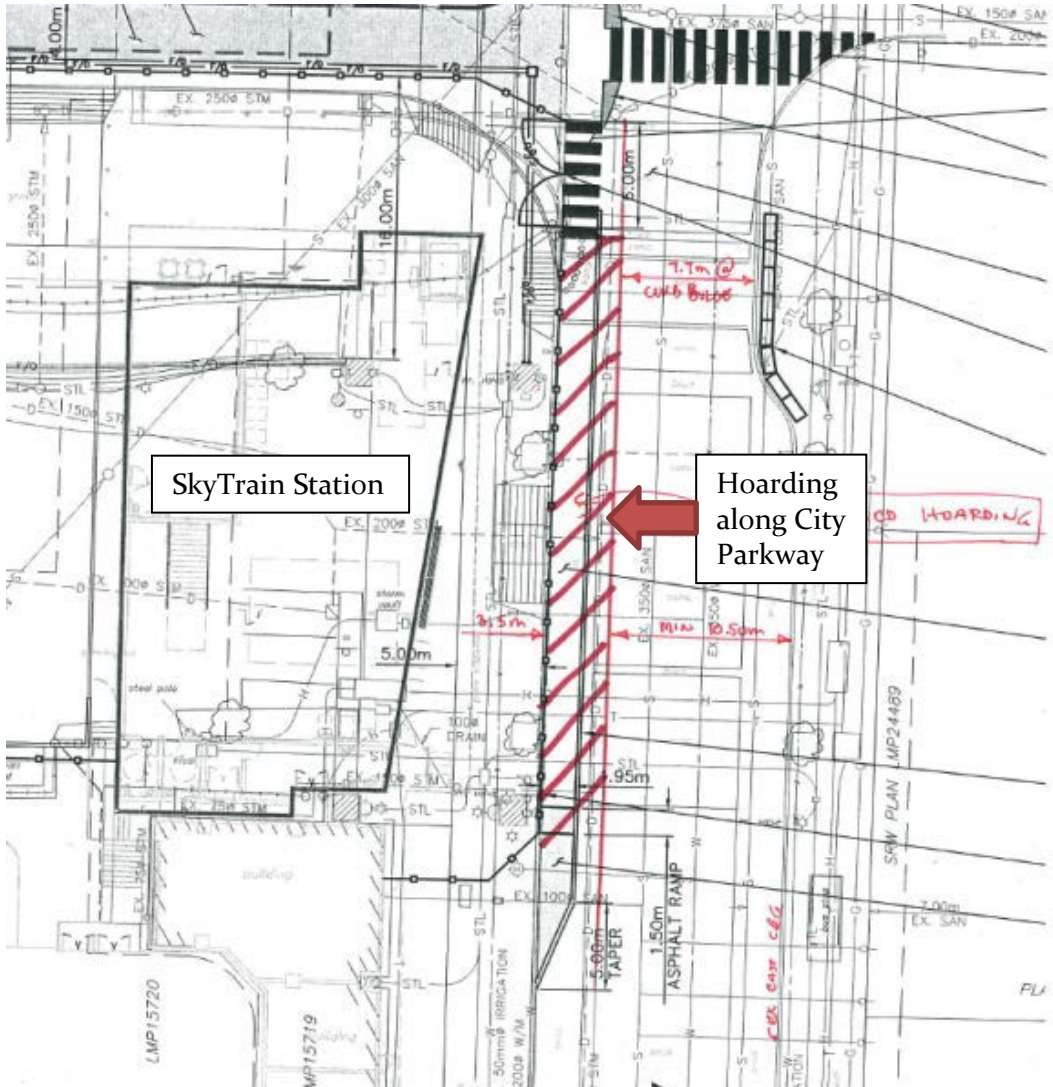
Based on community input from the selection panel members and the Public Art Advisory Committee, the Parks, Recreation and Culture Department recommends that Council support the recommendation for the design proposed by Thomas Nelles, and authorize staff to proceed with implementing this art project.

Laurie Cavan  
General Manager  
Parks, Recreation and Culture

Appendix “I”      Surrey Central SkyTrain Construction Hoarding / Artwork Location  
Appendix “II”     Recommended Design for the Surrey Central SkyTrain Construction  
Hoarding

Appendix "I"

Surrey Central SkyTrain Construction Hoarding / Artwork Location



Hoarding type requested by TransLink

Proposed SkyTrain Station Design



Appendix "II"

**Recommended Design as proposed by Thomas Nelles for the Surrey Central  
SkyTrain Construction Hoarding**

*Chrysalis* Overall Design (10ft. x 60 ft.)



*Chrysalis* Detail (left end)



*Chrysalis* Detail (right end)

