

REGULAR COUNCIL

TO: Mayor & Council **DATE: June 7, 2016**
FROM: General Manager, Engineering **FILE: 4816-002/11**
SUBJECT: Award of Contract M.S. 4816-002-11
North Robson Storm and Sanitary Sewer Phase 2 Works

RECOMMENDATIONS

The Engineering Department recommends that Council:

1. Award Contract M.S. 4816-002-11 to Pedre Contractors Ltd. in the amount of \$2,453,325.00, including GST, for the North Robson Storm and Sanitary Phase 2 Works;
2. Set the expenditure authorization limit for Contract M.S. 4816-002-11 at \$2,700,000.00, including GST and contingency; and
3. Authorize the General Manager, Engineering to execute Contract M.S. 4816-002-11 to a maximum of \$2,700,000.00, including GST and contingency.

SCOPE OF WORK

The construction package related to this contract consists of installation of 1,276 metres of storm sewer to improve storm sewer servicing and 113 metres of sanitary sewer for the North Robson Phase 2 works at the locations listed in the following table, which are also illustrated on the map attached to this report as Appendix "I":

Map Reference Number	Project #	Project Description	Location
1	4815-5030-00	Storm Sewer	Between 124 Street and 127 Street and between 103 Avenue and 102 Avenue, including Southern Rail Crossing
2	4714-5330-00	Sanitary Sewer	103A Avenue at 124 Street, across Southern Rail

The contract work is expected to start in July 2016 and be completed by October 2016.

TENDER RESULTS

Tenders for the subject contract were opened on May 31, 2016 with the following results:

<i>Contractor</i>	<i>Tendered Amount with GST</i>	<i>Corrected Amount</i>
1. Pedre Contractors Ltd.	\$2,453,325.00	No Change
2. Richco Contracting Ltd.	\$2,823,581.57	No Change
3. TAG Construction Ltd.	\$3,188,557.05	No Change
4. B. Cusano Contracting (2007) Inc.	\$3,525,730.95	\$3,614,560.95

The Engineer's (McElhanney Consulting Services Ltd.) pre-tender estimate was \$2,264,000, including GST. The Engineer's estimate is slightly lower than the tender rates because the estimate did not accurately depict the railway crossing costs and the depth of the storm sewer installation.

Engineering staff have evaluated the tender price and found it to be reasonable for the proposed works.

EVALUATION

The City's consultant reviewed the tender submissions for accuracy and completeness. There was one arithmetic error that had no bearing on the outcome of the tender process. All submissions included the required 10% bid bond, were signed on the Tender Form, and were initialed on the Summary Sheet of the Schedule of Quantities and Prices.

The low bidder, Pedre Contractors Ltd., has provided a Consent of Surety for a Performance Bond and a Labour & Materials Bond, and agreed to complete the work within 75 working days, as stipulated in the contract. Pedre Contractors Ltd.'s past performance on similar work has been satisfactory. They have no outstanding legal claims against the City. It is recommended that Pedre Contractors Ltd. be awarded Contract M.S. 4816-002-11.

SUSTAINABILITY CONSIDERATIONS

The work of this contract will enhance the City's existing drainage infrastructure and provide an increase in the level of drainage service to the properties in these areas. In particular, the project supports the following City Sustainability Charter scope actions:

- EN 8: Sustainable Engineering Standards and Practices; and
- EN 13: Enhancing the Public Realm.

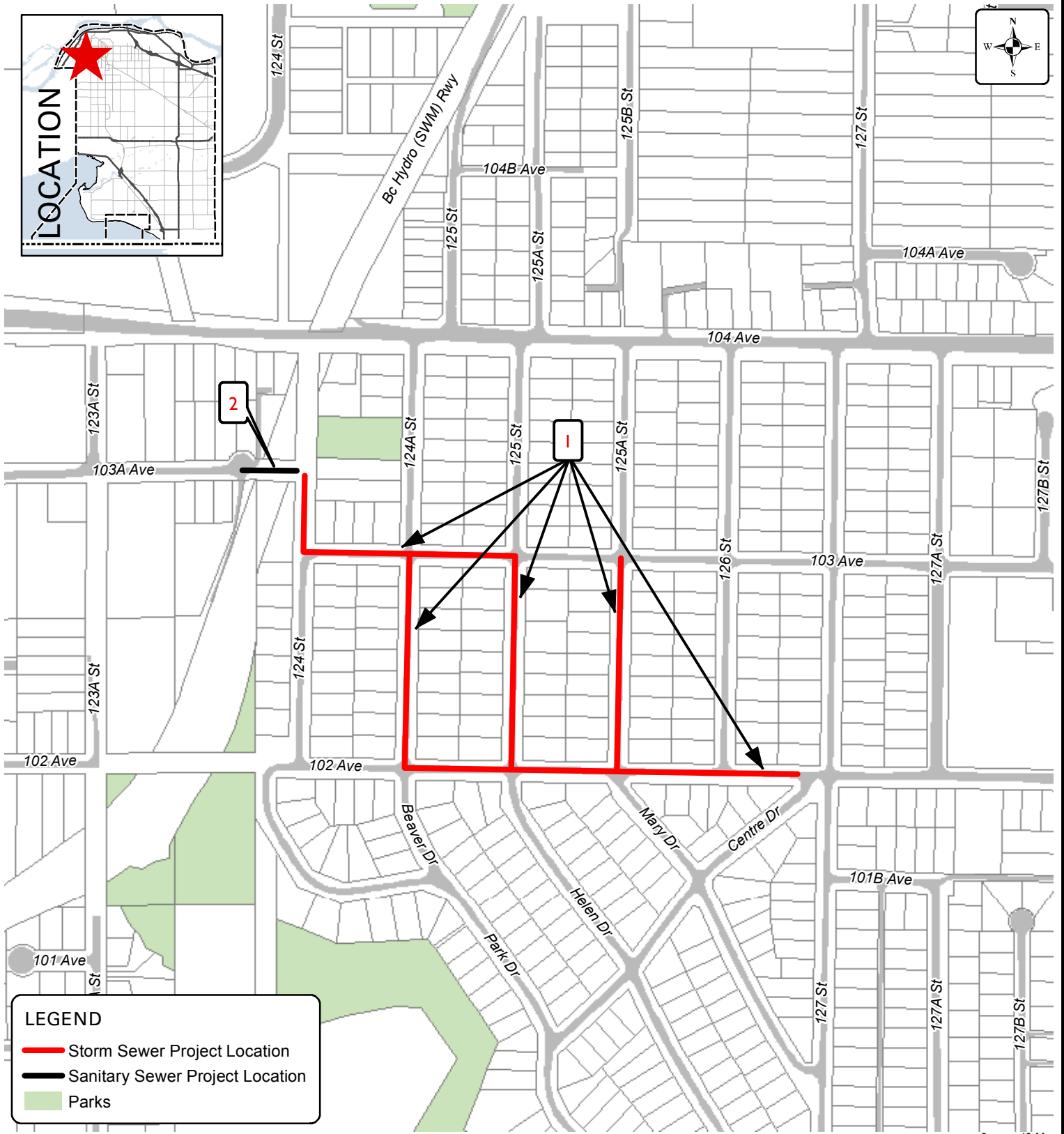
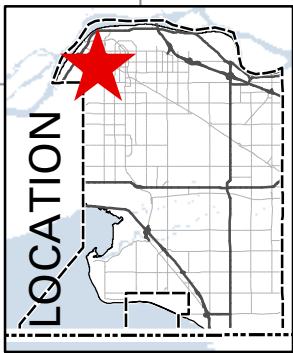
FUNDING

Funding for this contract is available in the approved 2016 Drainage and Sanitary Budgets.

Fraser Smith, P.Eng., MBA
General Manager, Engineering

SBN/HL/clr

Appendix "I" – Map of Locations – Contract M.S. 4816-002-11



LEGEND

- Storm Sewer Project Location
- Sanitary Sewer Project Location
- Parks

Produced by GIS Section: 06-Jun-2016, EM9

Scale: 1:5,000 0 40 M



CONTRACT M.S. 4816-002-11 North Robson Storm and Sanitary Phase 2 Works

ENGINEERING DEPARTMENT

The data provided is compiled from various sources and IS NOT warranted as to its accuracy or sufficiency by the City of Surrey. This information is provided for information and convenience purposes only. Lot sizes, Legal descriptions and encumbrances must be confirmed at the Land Title Office.