

NO: **R077** COUNCIL DATE: **May 25, 2015**

REGULAR COUNCIL

TO: **Mayor & Council** DATE: **May 12, 2015**
 FROM: **General Manager, Engineering** FILE: **4815-002/11**
 SUBJECT: **Award of Contract M.S. 4815-002-11**
South Cloverdale Canal and Ditch Drainage Improvements
BC Railway (17100 Block) to 180 Street

RECOMMENDATIONS

The Engineering Department recommends that Council:

1. Award Contract M.S. 4815-002-11 to GCL Contracting and Engineering Inc. in the amount of \$2,345,460.60, including GST, for South Cloverdale Canal and Ditch Drainage Improvements – 168 Street to 180 Street; and
2. Set the expenditure authorization limit for Contract M.S. 4815-002-11 at \$2,580,000.00, including GST and contingency.

SCOPE OF WORK

The construction package related to this contract consists of the South Cloverdale canal and ditch improvements from the BC Railway (17100 Block) to 180 Street, adjacent to Mound Farm, at the location listed in the following table, which is illustrated on the map attached to this report as Appendix I. The works being constructed include new ditch construction, ditch widening, culverts replacement, and vegetation restoration.

Project #	Project Description	Location
4815-002-11	Canal and Ditch Drainage Improvements	South Cloverdale: BC Railway (17100 Block) to 180 Street

The contract work is expected to start on June 8, 2015, and be completed by September 15, 2015.

TENDER RESULTS

Tenders for the subject contract were opened on May 1, 2015 with the following results:

Contractor	Tendered Amount with GST	Corrected Amount
1. GCL Contracting & Engineering Inc.	\$2,345,460.60	No Change
2. McDonald Ross Construction Ltd.	\$2,380,459.20	No Change

3. Tiahn Enterprise Ltd.	\$2,507,920.80	No Change
4. Tybo Contracting Ltd.	\$2,619,750.00	No Change
5. B&B Heavy Civil Construction Ltd.	\$2,666,600.00	\$2,743,952.38
6. Targa Contracting Ltd.	\$2,738,122.80	\$2,747,751.30
7. Delta Aggregates Ltd.	\$3,028,286.80	No Change
8. King Hoe Excavating Ltd.	\$3,076,414.06	No Change
9. Double M Excavating Ltd.	\$3,785,395.09	No Change

The Engineer's pre-tender estimate was \$2.85 Million including GST.

EVALUATION

The City's consultant reviewed the tender submissions for accuracy and completeness. There were two arithmetic errors that had no bearing on the outcome of the tender. All submissions included the required 10% bid bond, and were signed and sealed on the Tender Form and Summary Sheet of the Schedule of Quantities and Prices.

The low bidder, GCL Contracting and Engineering Inc., has provided a Consent of Surety for a Performance Bond and a Labour & Materials Bond, and agreed to complete the work within 58 working days, as stipulated in the contract. GCL Contracting and Engineering Inc.'s past performance on similar work has been satisfactory. They have no outstanding legal claims against the City. It is recommended that GCL Contracting and Engineering Inc. be awarded Contract M.S. 4815-002-11.

SUSTAINABILITY CONSIDERATIONS

The work associated with this contract will assist in achieving the objectives of the City's Sustainability Charter. In particular, the project supports the following scope actions:

- EC12: Enhancing the productivity of agricultural lands within the Serpentine and Nicomekl River floodplains;
- EN12: Enhancement and Protection of Natural Areas, Fish Habitat and Wildlife Habitat; and
- EN16: Manage Land, Water and Air Quality.

FUNDING

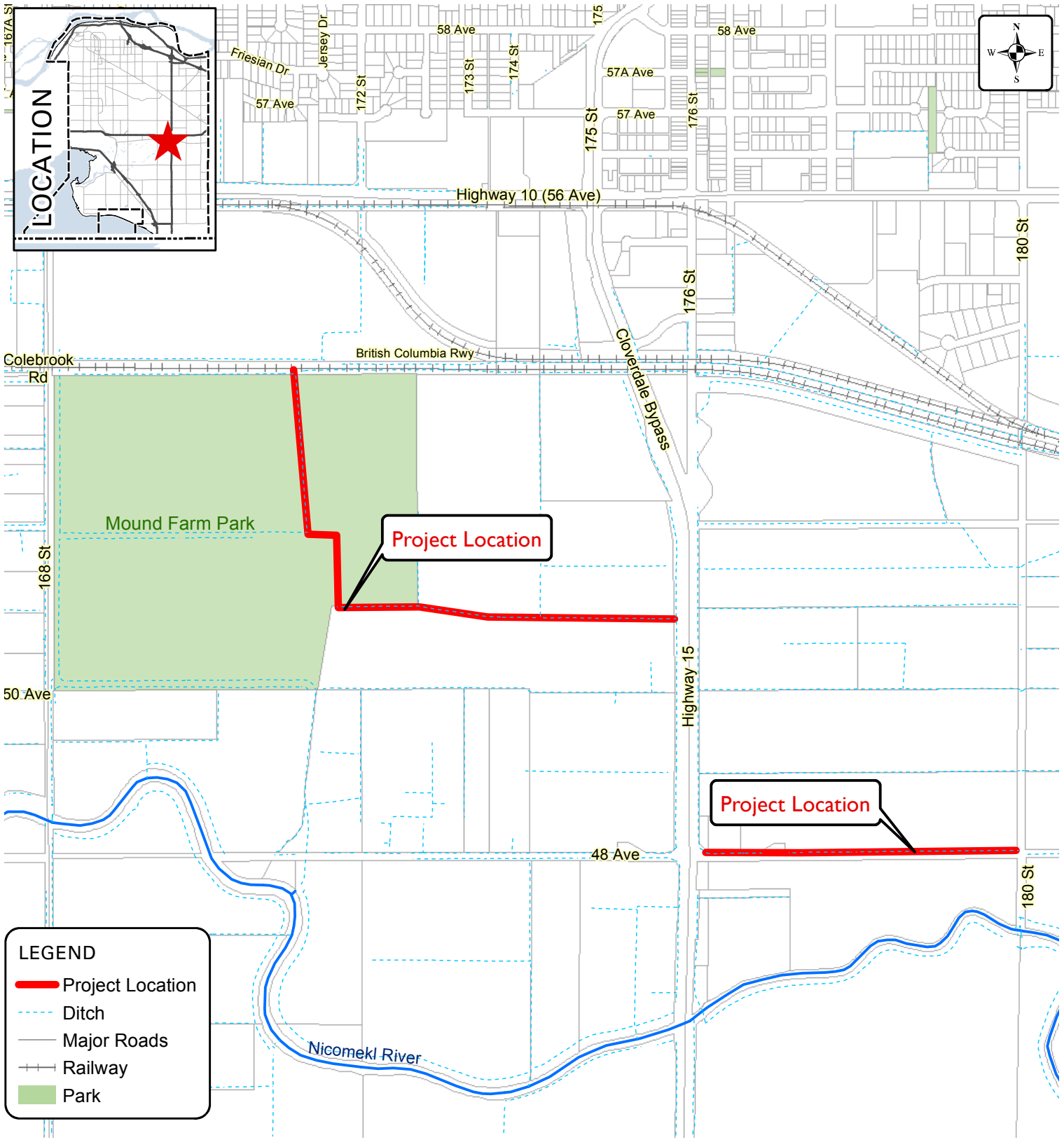
Funding for this contract is available in the approved 2015 Drainage Budget.

Fraser Smith, P.Eng., MBA
General Manager, Engineering

SBN/TB/clr

Appendix I – Map of Locations – Contract M.S. 4815-002-11

APPENDIX I



LEGEND

- Project Location
- - - - Ditch
- Major Roads
- +— Railway
- Park

Produced by GIS Section: 12-May-2015, JJR



Contract M.S. 4815-002-11
South Cloverdale Canal Ditch:
BC Railway (17100 Block) to 180 Street

ENGINEERING
DEPARTMENT

The data provided is compiled from various sources and IS NOT warranted as to its accuracy or sufficiency by the City of Surrey. This information is provided for information and convenience purposes only. Source: Lot sizes, Legal descriptions and encumbrances must be confirmed at the Land Title Office. File-server2\eng\ENGINEFILES\MAPPING\GIS\Maps\CorporateReps\Utility\EM_4815-002-11_SouthCloverdaleCanalDitch.mxd