

NO: R066 COUNCIL DATE: **MAY 11, 2015**

REGULAR COUNCIL

TO: **Mayor & Council** DATE: **May 4, 2015**
 FROM: **General Manager, Engineering** FILE: **4813-414/11**
 SUBJECT: **Award of Contract M.S. 4813-414-11**
168 Street Access, Dyke and Sullivan Station Drainage Improvements

RECOMMENDATIONS

The Engineering Department recommends that Council:

1. Award Contract M.S. 4813-414-11 to Delta Aggregates Ltd. in the amount of \$740,840.09, including GST, for 168 Street Access, Dyke and Sullivan Station Drainage Improvements; and
2. Set the expenditure authorization limit for Contract M.S. 4813-414-11 at \$815,000.00, including GST and contingency.

SCOPE OF WORK

The construction package related to this contract consists of a series of drainage improvements including: installation of a canal crossing, dyke spillway modifications, and drainage improvements. The locations are listed in the following table and are also illustrated on the map attached to this report as Appendix I:

Map Reference Number	Area	Project Description	Location
1	Sullivan Station	Swales, clearouts, asphalt aprons	Killarney Court
2		Swales, clearouts, asphalt aprons	Kildare Place
3		Swales, catch basins; regrade asphalt	Kildare Close
4		Swales, catch basins; regrade asphalt	Kilkee Place
5		Catch basins; regrade asphalt	Kilkee Drive: 5828 to 5903
6		Swales, clearouts, catch basins; regrade asphalt	Kilkenny Drive: 15514 to 15582
7		Swales, clearouts, catch basins; regrade asphalt	Kilmore Place
8		Catch basins; repave road	Kilmore Close, Kilmore Crescent W.

9	168 Street And 76 Avenue	Install new spillway; remove existing culvert	76 Avenue cutoff dyke and 168 Street
10		Raise existing spillway; install access across canal at 72 Avenue	Spillway north of, and inside 72 Avenue ROW
11	Spillway modifications (various locations)	Raise existing spillway	Spillway just west of 168 Street and south of Serpentine River
12		Raise existing spillway	Spillway north of and across from Serpentine River Channel inlet
13		Raise existing spillway	Spillway at 68 Avenue and 172 Street

The contract work is expected to start in June, 2015, with Sullivan Station construction to be complete by July, 2015. Dyke and access improvements will commence in July, 2015, and will be constructed in three phases at least four months apart due to geotechnical requirements, the last of which is scheduled to be complete by August, 2016.

TENDER RESULTS

Tenders for the subject contract were opened on April 22, 2015 with the following results:

<i>Contractor</i>	<i>Tendered Amount with GST</i>	<i>Corrected Amount</i>
1. Delta Aggregates Ltd.	\$740,840.09	No change
2. Double M Excavating Ltd.	\$865,223.05	No change
3. King Hoe Excavating Ltd.	\$904,901.00	No change
4. Tybo Contracting Ltd.	\$937,965.00	\$938,854.35
5. A.C. Paving Company Ltd.	\$1,521,124.50	No change

The Engineer's pre-tender estimate was \$928,782.75 including GST.

EVALUATION

The City's consultant reviewed the tender submissions for accuracy and completeness. There was one arithmetic error that had no bearing on the outcome of the tender process. All submissions included the required 10% bid bond, and were signed and sealed on the Tender Form and Summary Sheet of the Schedule of Quantities and Prices.

The low bidder, Delta Aggregates Ltd., has provided a Consent of Surety for a Performance Bond and a Labour & Materials Bond, and agreed to complete the work within 65 working days, as stipulated in the contract. Delta Aggregates Ltd.'s past performance on similar work has been satisfactory. They have no outstanding legal claims against the City. It is recommended that Delta Aggregates Ltd. be awarded Contract M.S. 4813-414-11.

SUSTAINABILITY CONSIDERATIONS

The work of this contract will restore vehicle access to two parcels of prime agricultural land, limit flooding, and improve surface drainage for residents of Sullivan Station. In particular, the project supports the following City Sustainability Charter scope actions:

- EC3: Sustainable Infrastructure Maintenance and Replacement;
- EC12: Enhance and Promote Surrey's Agricultural Land Base; and
- SC14: Support Food Security.

FUNDING

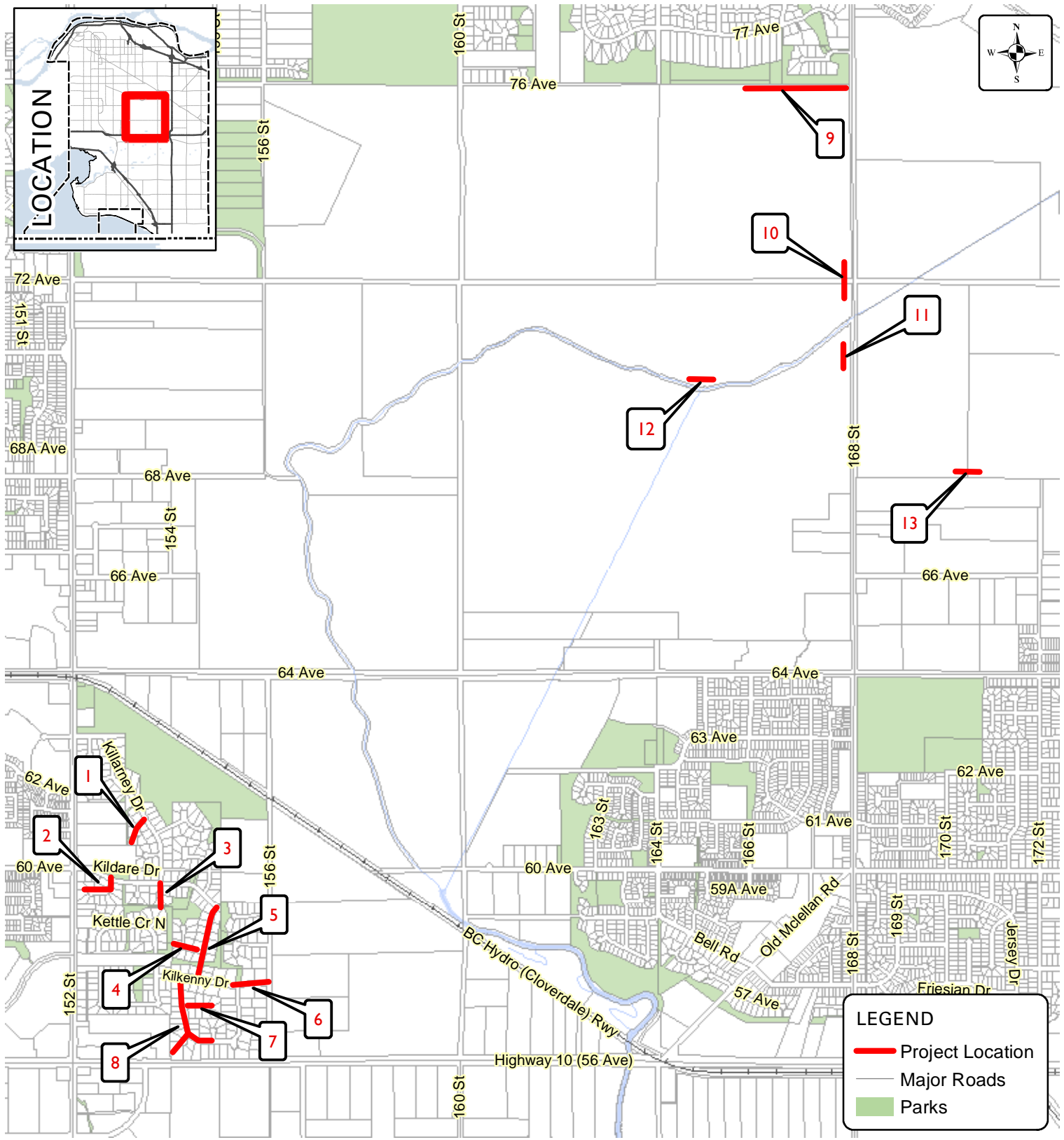
Funding for this contract is available in the approved 2015 Drainage Utilities Budget.

Fraser Smith, P.Eng., MBA
General Manager, Engineering

SBN/AD/am

Appendix I – Map of Locations – Contract M.S. 4813-414-11

APPENDIX I



Produced by GIS Section: 21-Apr-2015, EM9



CONTRACT MS 4813-414-11
168 Street Access, Dyke and
Sullivan Station Drainage Improvements

ENGINEERING
DEPARTMENT