

NO: **R124** COUNCIL DATE: **July 8, 2013**

---

## REGULAR COUNCIL

TO: **Mayor & Council** DATE: **July 4, 2013**  
FROM: **General Manager, Engineering** PROJECT FILE: **4713-004**  
SUBJECT: **Award of Contract M.S. 4713-004-11**  
**Robson Creek Ravine Sanitary Sewer Replacement - Phase 1**

---

## RECOMMENDATIONS

The Engineering Department recommends that Council:

1. Award Contract M.S. 4713-004-11 to Pedre Contractors Ltd. in the amount of \$2,097,343.50, including GST, for the phase 1 component of the replacement of the Robson Creek Ravine sanitary sewer; and
2. Set the expenditure authorization limit for Contract M.S. 4713-004-11 at \$2,360,000.00 including GST and contingency.

## SCOPE OF WORK

The construction works related to this contract consist of replacing the 300mm diameter sanitary sewer in the Robson Creek Ravine Park pathway between 100 Avenue and 102 Avenue with a 600mm diameter sewer. The location of the contract work is illustrated on the map attached as Appendix I.

The contract work is expected to start by August 2013 and be completed by November 2013.

## BACKGROUND

The 300mm diameter sanitary sewer built in the 1950's in the ravine of the Robson Creek pathway is experiencing capacity problems, causing it to surcharge and overflow within the ravine.

The Phase 1 component of the sanitary sewer replacement project runs from 100 Avenue to 102 Avenue and will address the capacity concerns related to the existing sewer, which surcharges during significant storm events. The new larger diameter sewer will also provide some additional capacity to support future development in the area.

Staff has reviewed several alignment options and has determined the replacement and upsizing of the sanitary sewer in the existing ravine location is the only practical solution. The other options are challenged due to pipe grades and existing boundaries and would require the construction of

a sewer at a depth of about 10 metres that would be difficult to construct and maintain. The cost of each of the other options is also higher than the cost of constructing the sanitary sewer on its existing alignment. The cost of the optional alignments away from the ravine is approximately \$10 million whereas the cost to construct the sanitary sewer on its existing alignment is approximately \$3.5 million.

Biologists and arborists have been engaged in the design to ensure that there is minimum impact to the creek and to protect as many trees as possible during the construction process. Any areas that are disturbed by construction will be replanted with native flora.

## TENDER RESULTS

Tenders for the subject contract were opened on June 25, 2013, with the following results:

<i>Contractor</i>	<i>Tendered Amount with GST</i>	<i>Corrected Amount</i>
1. Pedre Contractors Ltd.	\$2,097,343.50	No Change
2. Targa Contracting Ltd.	\$2,169,917.40	\$2,169,392.40
3. B & B Contracting (2012) Ltd.	\$2,726,430.00	No Change

The Engineer's pre-tender estimate was \$2,474,356.50 including GST.

## EVALUATION

The City's consultant reviewed the tender submissions for accuracy and completeness. There was one arithmetic error that had no bearing on the outcome of the tender process. All submissions included the required 10% bid bond, and were signed and sealed on the Tender Form and Summary Sheet of the Schedule of Quantities and Prices.

The low bidder, Pedre Contractors Ltd., has provided a Consent of Surety for a Performance Bond and a Labour & Materials Bond, and agreed to complete the work within 60 working days, as stipulated in the contract. Pedre Contractors Ltd.'s past performance on similar work has been satisfactory. They have no outstanding legal claims against the City. It is recommended that Pedre Contractors Ltd. be awarded Contract M.S. 4713-004-11.

## SUSTAINABILITY CONSIDERATIONS

The Robson Creek Ravine Sanitary Sewer Replacement project will eliminate the capacity constraints in the existing system and as a result will better protect the surrounding natural environment. The project will assist in achieving the objectives of the City's Sustainability Charter Scope; more particularly, the following scope actions:

- EC3: Sustainable Infrastructure Maintenance and Replacement; and
- EN8: Sustainable Engineering Standards and Practice.

## FUNDING

Funding for this contract is available in the approved 2013 Capital Budget.

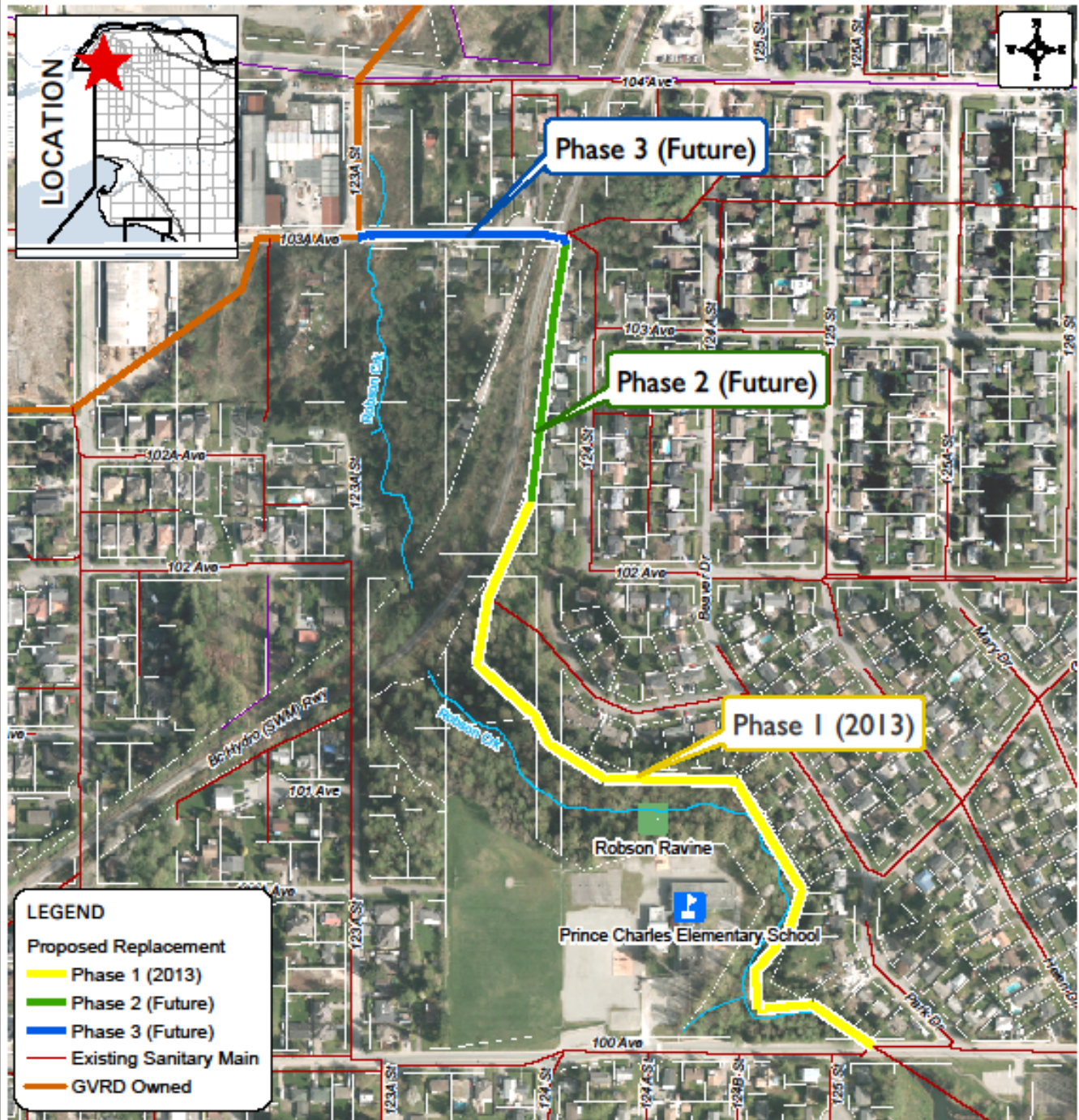
Vincent Lalonde, P.Eng.  
General Manager, Engineering

VL/HL/brb

Appendix I – Map Illustrating the Location of the Work Associated with Contract M.S. 4713-004-11

g:\wp-docs\2013\admin\cr\06181412hl (md)2.doc  
BRB 7/4/13 4:09 PM

# APPENDIX I



Produced by GIS Section: March-26-13, JUR

Date of Aerial Photography: April 2012



## PROPOSED ROBSON SANITARY SEWER REPLACEMENT PROJECT

ENGINEERING DEPARTMENT

The data provided is compiled from various sources and is NOT warranted as to its accuracy or sufficiency by the City of Surrey. This information is provided for informational and convenience purposes only. Lot sizes, Legal descriptions and encumbrances must be confirmed at the Land Title Office.

G:\MAPPING\GIS\Maps\Corporate\Report\Eng-Utilities\JJ\_Proposed Robson Creek San Sewer Replacement Project.AP.mxd

Source: