

SUSTAINABILITY CONSIDERATIONS

The proposed sale of City land supports the objectives of the City's Sustainability Charter; more particularly, the economic goal of using the City's land base efficiently, which contributes to the City's financial sustainability. It also supports the broad Charter objective of ensuring that land uses are located in a planned and orderly manner throughout the City.

CONCLUSION

The subject City property (PID No. 028-134-761) is formerly a 244.7 m² portion of public lane that has been cancelled as dedicated highway for the purpose of disposition and consolidation with the adjacent lands at 10156 & 10168 – 132 Street and 13230 & 13238 Old Yale Road. The terms and conditions that have been negotiated for the disposition of this land are considered reasonable. It is recommended that Council approve the sale of PID No. 028-134-761 as generally described in this report.

Vincent Lalonde, P. Eng.
General Manager, Engineering

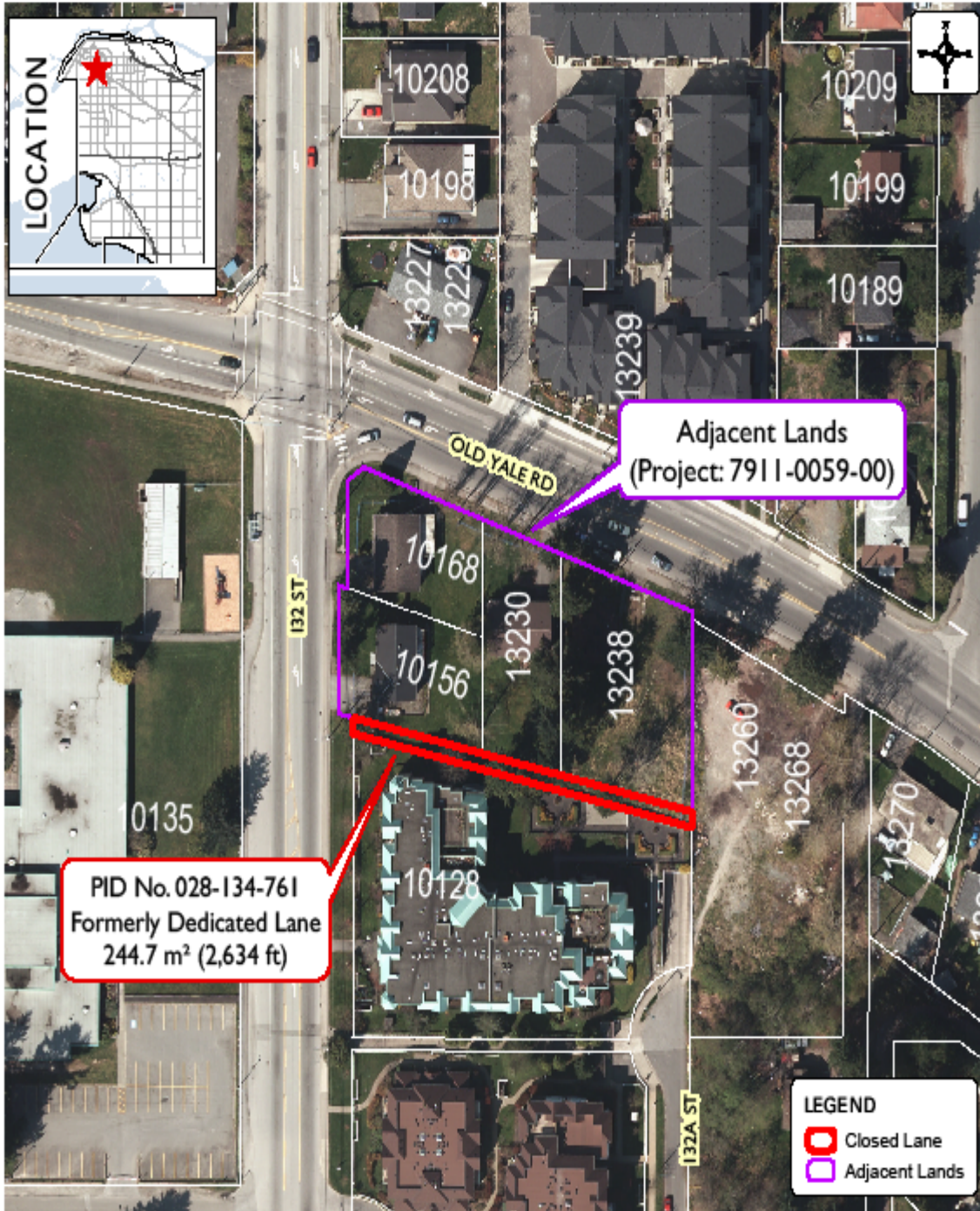
AW/amg

g:\wp-docs\2011\admin\cr\10241315-aw (md).doc
BRB 11/24/11 11:28 AM

Appendices

- I. Aerial Photograph of Site
- II. Corporate Report No. R160; 2009
- III. Corporate Report No. R054; 2010

APPENDIX I AERIAL PHOTOGRAPH OF SITE



Produced by GIS Section: October 24, 2011, AWB

Date of Aerial Photography: April 2011



LANE CLOSURE
FILE: 0910-30/158
PROJECT: 7911-0059-00

**ENGINEERING
DEPARTMENT**

The data provided is compiled from various sources and IS NOT warranted as to its accuracy or sufficiency by the City of Surrey.
This information is provided for information and convenience purposes only.
Lot sizes, Legal descriptions and encumbrances must be confirmed at the Land Title Office.

G:\MAPPING\GIS\MAPS
CORPORATE REPORTS\Reality
AW-LaneClosure_132ST&OldYaleRd-AP.mxd