



This team, through the Fall of 2009 and Winter of 2010 will work through a process of preliminary and detail design, public consultation and agency liaison and approval for these two landmark bridges. The bridges will be tendered for construction in the Spring of 2010 with completion of construction by March 2011, the Program deadline.

## **DISCUSSION**

In accordance with the City's normal consultant selection process, the following firms were invited to submit proposals for this assignment:

Associated Engineering Ltd.  
Stantec Consulting Ltd.  
MMM Group Ltd.  
Buckland & Taylor Ltd.

## **Evaluation of Proposals**

The proposals were evaluated using the following criteria:

- ◇ understanding of assignment
- ◇ experience relative to assignment
- ◇ performance record
- ◇ strength of project manager and team
- ◇ work plan and schedule
- ◇ familiarity with Surrey's procedures and practices
- ◇ local office availability

The proposal submitted by Associated Engineering (B.C.) Ltd. for this assignment best met the above evaluation criteria in comparison to the other proposals that were received and the fee schedule proposed by Associated Engineering Ltd. is considered reasonable for the type of work that is involved in this contract.

## **Optional Tender and Construction Phase to Contract**

The Engineering Department typically includes as an option in favour of the City within the design Engineering Agreement that allows the City to retain the same consultants to provide tender and construction services. This option would only be exercised if the consultants demonstrate satisfactory performance during the design phase.

## **FUNDING**

These bridge projects are being cost-shared on a 1/3, 1/3, 1/3 basis between the Federal government, Provincial government and the City. The City's one-third share is available in the approved 2009 transportation budget.

## **SUSTAINABILITY CONSIDERATIONS**

The proposed pedestrian bridges will provide improved opportunity for cycling and safe pedestrian access through the City, which supports the Sustainability Charter's vision of efficiently moving people and goods, not just vehicles. The project will also enhance the public realm by utilizing off-street bicycle and pedestrian design standards that minimize the negative impacts of transportation facilities on communities, while providing appropriate infrastructure in support of the City's transportation needs. In particular, the project supports the Charter Scope actions related to:

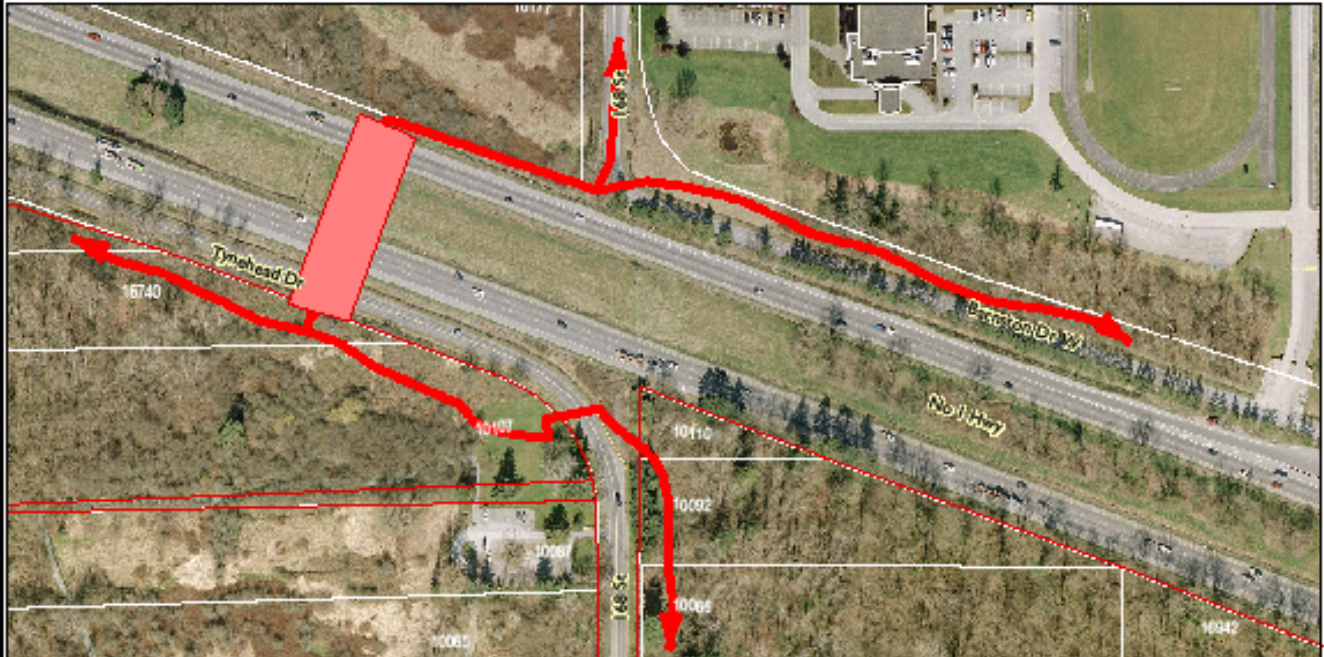
- SC 13: Creating a Full Accessible City
- EN 13: Enhancing the Public Realm

Vincent Lalonde, P.Eng.  
General Manager, Engineering

VL/RB/brb

APPENDIX I

# Tynehead Pedestrian Overpass



# Pioneer Greenway Pedestrian Overpass



Produced by GIS Section: October 1, 2009, A1W

Date of Aerial Photography: April 2008



## Tynehead & Pioneer Greenway Pedestrian Overpasses

GIS  
SECTION

The data provided is compiled from various sources and IS NOT warranted as to its accuracy or sufficiency by the City of Surrey.  
This information is provided for information and convenience purposes only.  
Lot sizes, legal descriptions and encumbrances must be confirmed at the Land Title Office.

G:\MAPPING\GIS\MAPS\  
CORPORATE REPORTS\Eng-Transportation\  
A1W-PioneerGreenway&TyneheadOverpass.mxd