

TENDER RESULTS

Tenders for the subject Contract were received on May 7, 2009 as follows:

<i>Contractor</i>	<i>Tendered Amount with GST</i>	<i>Corrected Amount</i>
1. Westshore Constructors Ltd.	\$1,177,470.00	No Change
2. GCL Contracting & Engineering Inc.	\$1,246,061.25	No Change
3. Neelco Construction (1986) Inc.	\$1,274,856.45	No Change
4. Kingston Construction Ltd.	\$1,324,743.00	\$1,324,667.00
5. Jakes Construction Ltd.	\$1,415,961.75	No Change
6. Seismic 2000 Construction Ltd.	\$1,433,113.50	No Change
7. Westbridge Corp.	\$1,457,421.00	No Change
8. Chet Construction Ltd.	\$1,504,650.00	No Change
9. Smith Bros. & Wilson (BC) Ltd.	\$1,596,065.13	\$1,596,063.90
10. Graham Infrastructure a JV	\$1,603,298.02	No Change
11. Ruskin Construction Ltd.	\$1,679,861.40	No Change
12. Surespan Construction Ltd.	\$1,775,737.33	No Change

The Engineer's pre-tender estimate was \$2,300,000, including GST.

EVALUATION

The City's consultant reviewed the tender submissions for accuracy and completeness. Two bidders made minor mathematical errors; the corrected values are shown above. All submissions included the required 10% bid bond, and were signed and sealed on the Tender Form and Summary Sheet of the Schedule of Quantities and Prices.

The low bidder, Westshore Constructors Ltd., has provided a Consent of Surety for a Performance Bond and a Labour & Materials Bond, and agreed to complete the work within 60 working days, as stipulated in the contract. Westshore's past performance on similar work has been satisfactory. They have no outstanding legal claims against the City. It is recommended that Westshore Constructors Ltd. be awarded Contract M.S. 1706-012-31.

FUNDING

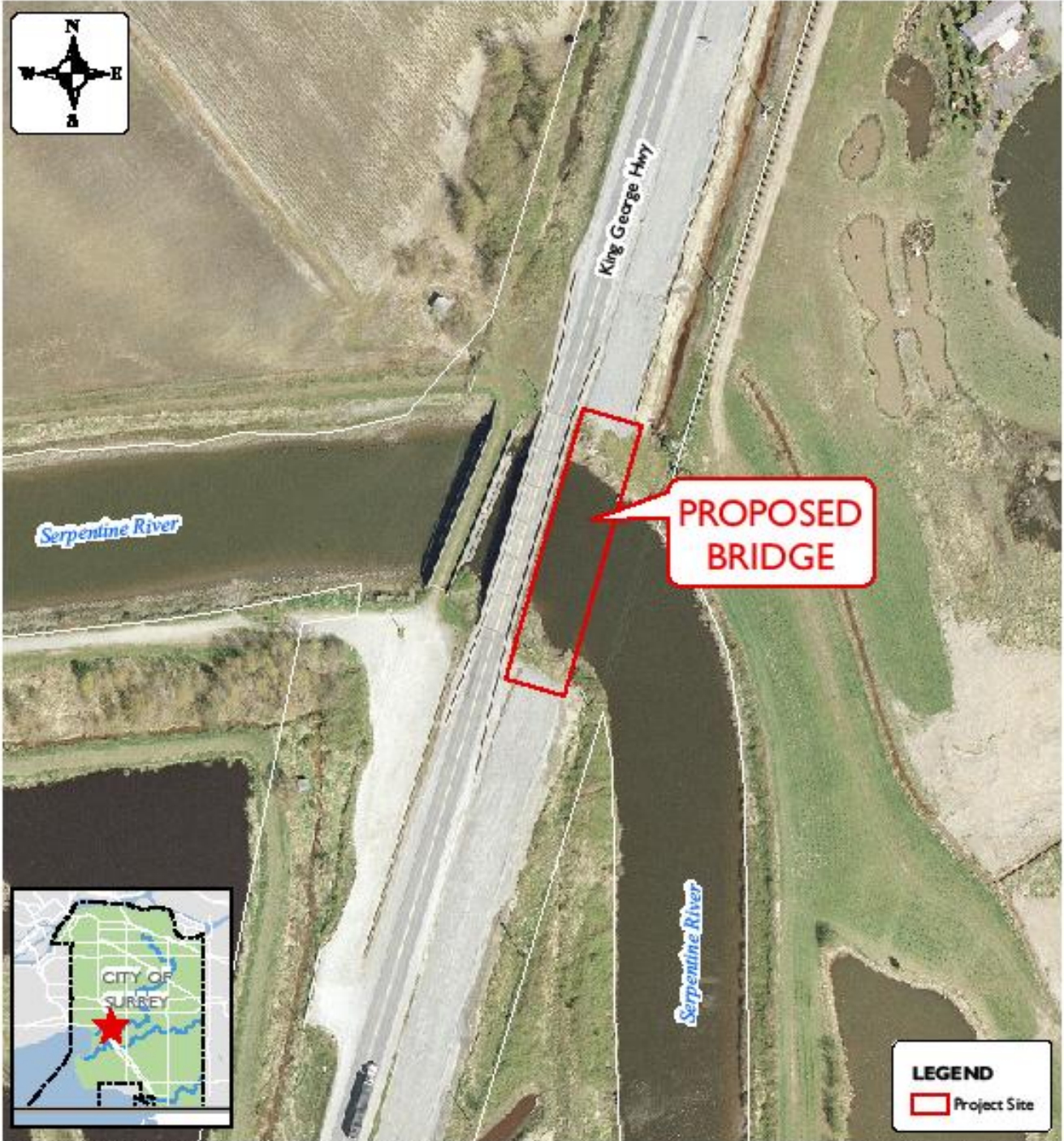
Funding for this contract is available in the approved 2009 Engineering Budget, with 50% being provided by TransLink under their Minor Capital Program.

Vincent Lalonde, P.Eng.
General Manager, Engineering

JB/VL/PZ/brb

Appendix I – Map of New Bridge Location on King George Highway at Serpentine River

APPENDIX I



PRODUCED BY ENGINEERING, GIS SECTION: April 28, 2009, CS

Date of Aerial Photography: April 2008



CONTRACT MS 1706-012-31 NEW SERPENTINE RIVER BRIDGE ON KING GEORGE HWY

ENGINEERING
DEPARTMENT

The data provided is compiled from various sources and IS NOT warranted as to its accuracy or sufficiency by the City of Surrey.
This information is provided for information and convenience purposes only.
Lot sizes, legal descriptions and encumbrances must be confirmed at the Land Title Office.

Q:\Mapping\GIS\Maps\Corporate Reports\Eng-Thru\RGH_SerpentineBridge-V.Press