

TENDER RESULTS

Tenders for the subject contract were received on May 5, 2009, and were as follows:

<i>Contractor</i>	<i>Tendered Amount with GST</i>	<i>Corrected Amount</i>
1. B & B Contracting Ltd.	\$ 985,834.50	No Change
2. Mission Contractors Ltd.	\$1,436,189.44	\$1,265,820.12
3. Double M Excavating Ltd.	\$1,485,598.30	\$1,419,749.39
4. Delta Aggregates Ltd.	\$1,426,110.79	No Change

The Engineer's pre-tender estimate was \$1,880,000 including GST.

EVALUATION

The City's consultant reviewed the tenders for accuracy and completeness. All submissions included the required 10% bid bond, and were signed and sealed on the Tender Form and Summary Sheet of the Schedule of Quantities and Prices. Both Mission Contractors Ltd.'s and Double M Excavating Ltd.'s original tender amounts included provisional items in their tender price. Excluding these provisional items and after adjusting for a minor arithmetic error, their corrected tender amounts are shown in the table above.

The low bidder, B & B Contracting Ltd., has submitted a Consent of Surety for a Performance Bond and a Labour & Materials Bond, and agreed to complete the work within 75 working days, as stipulated in the Contract. B & B's past performance has been satisfactory. They have no outstanding legal claims against the City. It is recommended that B & B Contracting Ltd. be awarded Contract M.S. 4806-001-31.

FUNDING

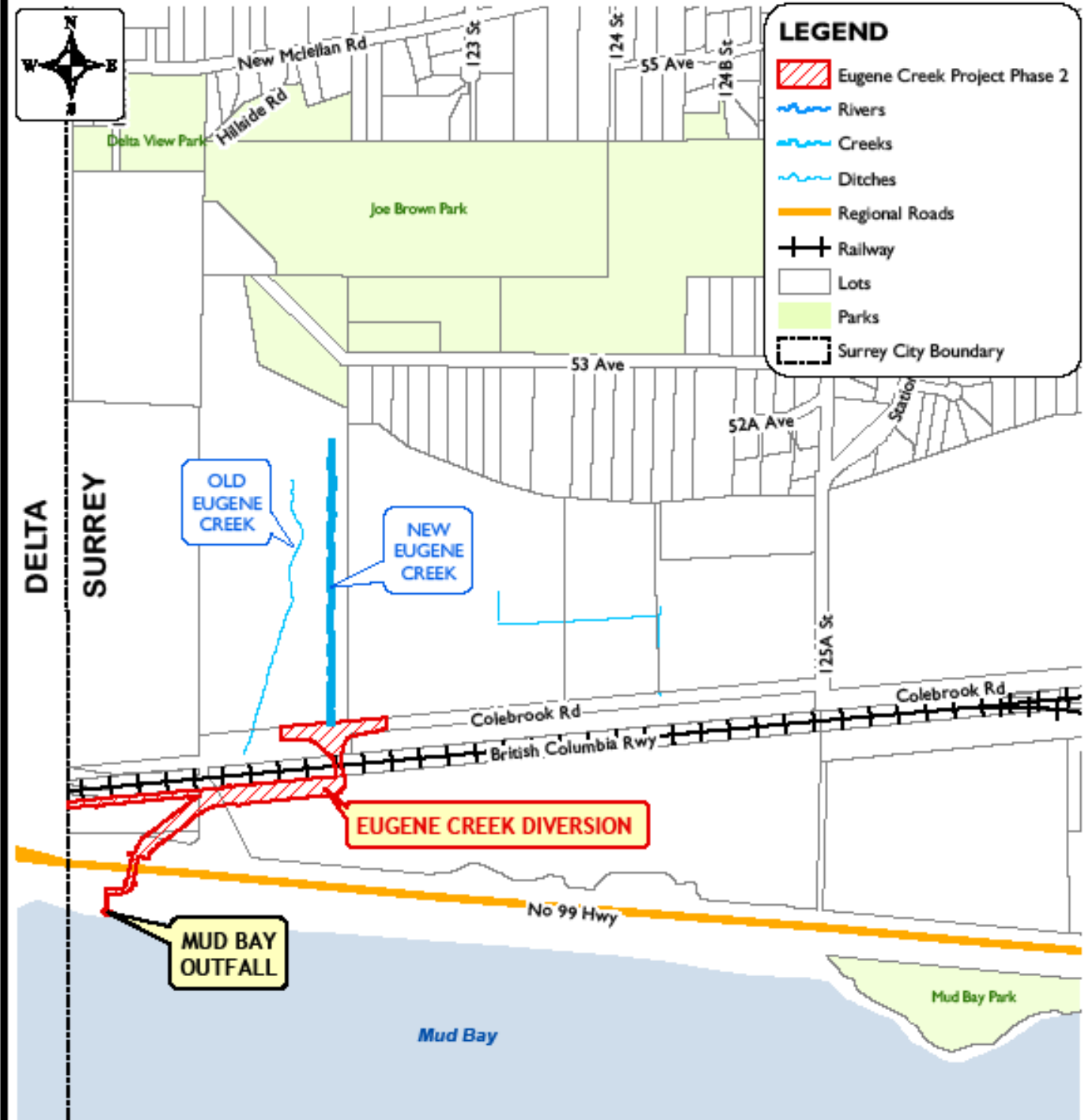
Funding for this contract is available in the approved 2009 Budget.

Vincent Lalonde, P.Eng.
General Manager, Engineering

VL/TH/brb

Appendix I – Location of Project

APPENDIX I: SITE PLAN



PRODUCED BY G.I.S. SECTION: May 5, 2009, CS



**CONTRACT MS 4806-001-31
DRAINAGE PACKAGE D01/06
EUGENE CREEK DIVERSION**

**ENGINEERING
DEPARTMENT**

The data provided is compiled from various sources and IS NOT warranted as to its accuracy or sufficiency by the City of Surrey.
This information is provided for information and convenience purposes only.
Lot sizes, Legal descriptions and encumbrances must be confirmed at the Land Title Office.

G:\MAPPING\GIS\MAPS\
CORPORATE REPORTS\Eng-LIMs\
12200BlockColebrookRd.sxd