

bases will support the signs and a plain metal backing will be used to cover the framework on the back of the signs.

Smaller entry signs will also be installed at 11 different locations throughout the City. The list of locations is attached as Appendix III. The final design of the smaller scale signs will be communicated to Council as information once that design is completed, which is expected in the next couple of weeks.

Timeline for Gateway Sign Replacement

The existing Gateway Signs will be replaced in two phases over the next year.

Phase 1. – Before December 31, 2008

The first phase of the Gateway Sign Replacement includes the installation of new large signs (Appendix II) at the following major entrance locations:

- King George Highway, entering Surrey from the West by way of the Patullo Bridge;
- Highway 10 at 120th Street (Scott Road) entering Surrey from the West;
- Fraser Highway at 194th Street, entering Surrey from Langley; and
- 176th Street (Hwy 15) at 2nd Avenue, entering Surrey via the Pacific Highway Border Crossing from the South.

All of the smaller-scale entrance signs will be erected in Phase 1.

Phase 2 – Spring 2009

The second phase of sign replacement will occur in early 2009, with the installation of signs on Highway 10 at 194th Street, and on 96th Avenue at 196th Street in Port Kells. Also, site assessments will be conducted during Phase 2 to identify additional locations for the larger signs at other gateways to the City.

Other Signs to be Installed

The existing gateway sign located on Highway 99 at 0 Avenue is not required as there is a very large gateway sign located just north of 8th Avenue on Highway 99. As such the gateway sign on 0 Avenue will not be replaced.

There is a gateway sign on Highway 1 near 182nd Street, and another on Highway 15 at 96th Avenue. At each of these locations, the Ministry of Transportation and Infrastructure is completing a road-widening project. New signs will be erected at these locations once the highway upgrading projects are complete.

Funding for the Gateway Sign Program

Funding for Phase 1 the gateway signs project is available within the approved 2008 budget. Funding for Phase 2 will be included in the 2009 budget.

SUMMARY

New Gateway Signs have been designed incorporating Surrey's new logo. They will replace the existing gateway signs at key entry points to the City. The first phase of gateway sign deployment will be completed by December 31 of this year with the second phase completed during the spring of 2009.

Vincent Lalonde, P.Eng
General Manager,
Engineering

Laurie Cavan
General Manager,
Parks, Recreation and Culture

Appendix I Location of Gateway Signage
Appendix II Image of Large Gateway Sign
Appendix III Locations of Small Entry Signs

Appendix I – Location of Gateway Signage

Corporate Report, The City of Surrey.

Appendix I - Gateway Signage

Phase 1

(Implemented by December 31st, 2008)

1. King George Hwy. -
entering Surrey from the
Pattulo Bridge
2. Hwy. 10 @ 120th Street -
entering Surrey from the West
3. Fraser Hwy. @ 194th Street -
entering Surrey from Langley
4. 176th Street @ 2nd Avenue -
entering Surrey via the Pacific
Hwy. Border Crossing

Phase 2

(Implementation scheduled for Spring 2009)

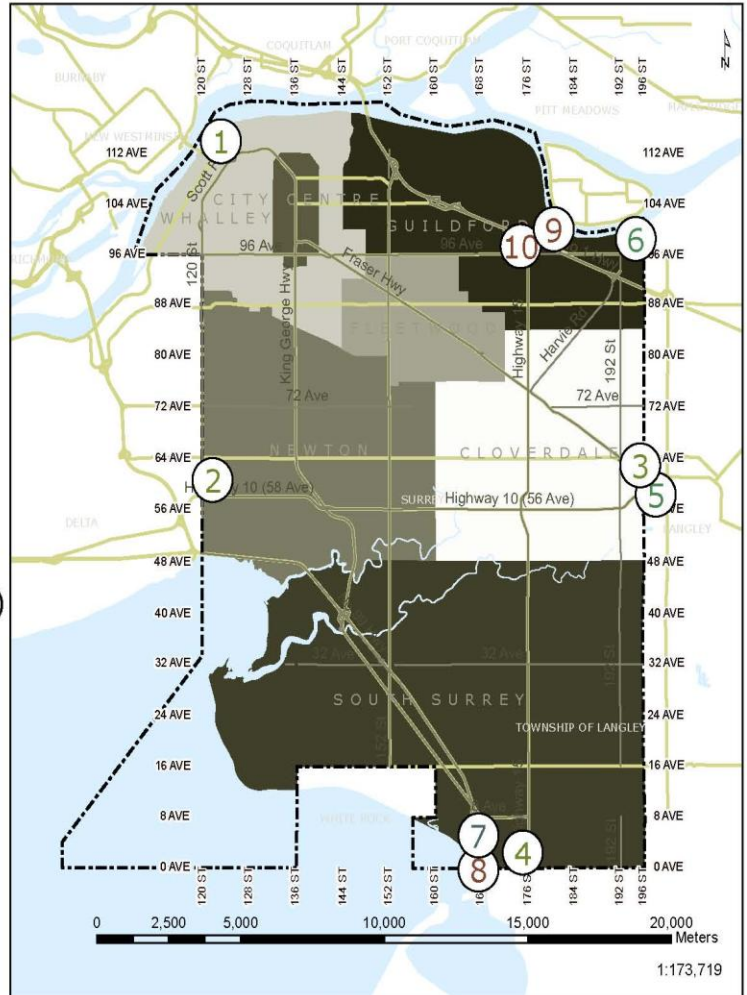
5. Hwy. 10 @ 194th Street
6. 96th Avenue @ 196th Street

Existing Signs to be Retained.

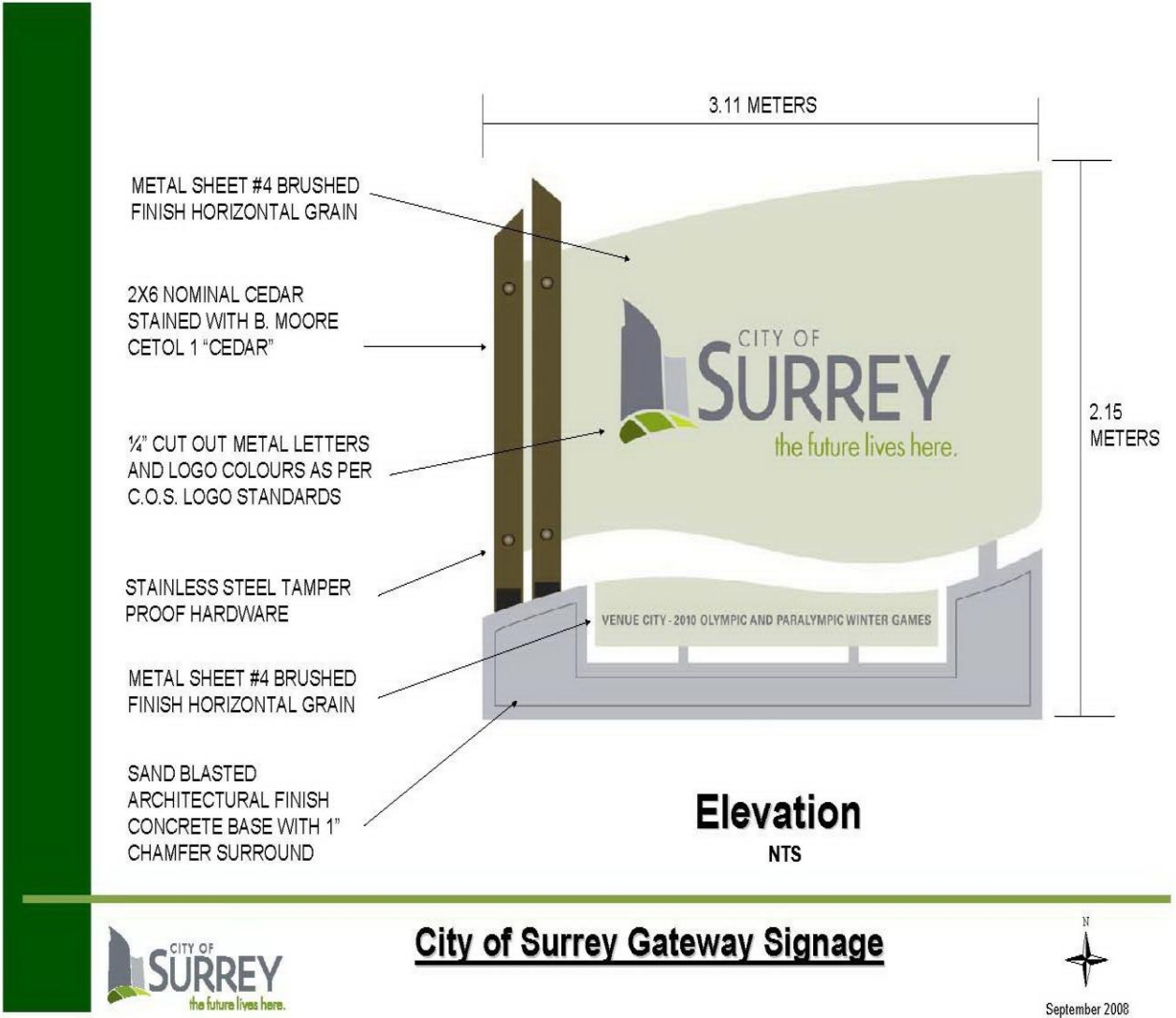
7. Hwy. 99 @ 8th Avenue

Signs to be Removed from Inventory

8. Hwy. 99 @ 0 Avenue
9. Hwy. 1 @ 182nd Avenue
10. Hwy. 15 @ 96th Avenue



Appendix II – Image of a Gateway Sign



Appendix III
Locations of Small Entry Signs

96th Avenue and 120th Street

88th Avenue and 120th Street

72nd Avenue and 120th Street

64th Avenue and 120th Street

Hwy. #99 and 120th Street

96th Avenue and 196th Street

88th Avenue and 196th Street

64th Avenue and 196th Street

Hwy. #10 and 194th Street

16th Avenue and 196th Street

152nd Street and 16th Avenue