

CITY OF SURREY

BYLAW NO. 21197

A Bylaw to close and to remove the dedication
of a highway of portion of Road
.....

WHEREAS pursuant to Subsection 40(1)(a) of the *Community Charter*, S.B.C. 2003, c. 26, the Council may, by bylaw, close all or part of a highway that is vested in the municipality to all or some types of traffic;

AND WHEREAS pursuant to Section 40(2) of the *Community Charter*, S.B.C. 2003, c. 26, the Council may, by bylaw, remove the dedication of a highway that has been closed by a bylaw under Subsection 40(1)(a).

NOW, THEREFORE the Council of the City of Surrey ENACTS as follows:

1. That portion of road lying in Section 27, Block 5 North Range 2 West, NWD shown outlined in heavy black line on a Reference Plan 20923 attached hereto, prepared by Sean Costello, B.C.L.S. on the 9th day of April, 2024, and described as follows:

That portion of Road labeled Parcel A containing 122.4 square metre.

(hereinafter referred to as that portion of Road)

shall be closed to traffic.

2. The dedication as highway be removed of said portion of Road.
3. This Bylaw may be cited for all purposes as "Surrey Close and Remove the Dedication of Highway of Portion of Road Adjacent to 10078, 10088 and 10098 – 133 Street, Bylaw 2024, No. 21197".

PASSED FIRST READING on the 6th day of May, 2024.


PASSED SECOND READING on the 6th day of May, 2024.

PASSED THIRD READING on the 6th day of May, 2024.

NOTICE OF INTENTION ADVERTISED on the 9th and 16th day of May 2024, in the SURREY NOW LEADER newspaper.

RECONSIDERED AND FINALLY ADOPTED, signed by the Mayor and Clerk, and sealed with the Corporate Seal on the 27th day of May, 2024.

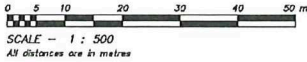

 _____ MAYOR

 _____ CLERK

**REFERENCE PLAN TO ACCOMPANY BYLAW NO. 21197
CITY OF SURREY TO CLOSE PART OF ROAD DEDICATED
ON PLAN 20923, SECTION 27, BLOCK 5 NORTH,
RANGE 2 WEST, NEW WESTMINSTER DISTRICT**

PLAN EPP136382

City of Surrey B.C.G.S. 92G.016
Pursuant to Section 120 of the Land Title Act
and Section 40 of the Community Charter



The intended plot size of this plan is 432mm
in width by 560mm in height (C Size) when
plotted at a scale of 1:500.

Integrated Survey Area No. 1
City of Surrey NAD83 (CSRS) 4.0.0.BC.1.MVRD

Grid Bearings are derived from observations between
Control Monuments 5791 and 80H2057 and are
referenced to the central meridian of UTM zone 10.

The UTM co-ordinates and estimated absolute accuracy
obtained are derived from the NAD83 published
coordinates and standard deviations for geodetic control
monuments 5791 and 80H2057.

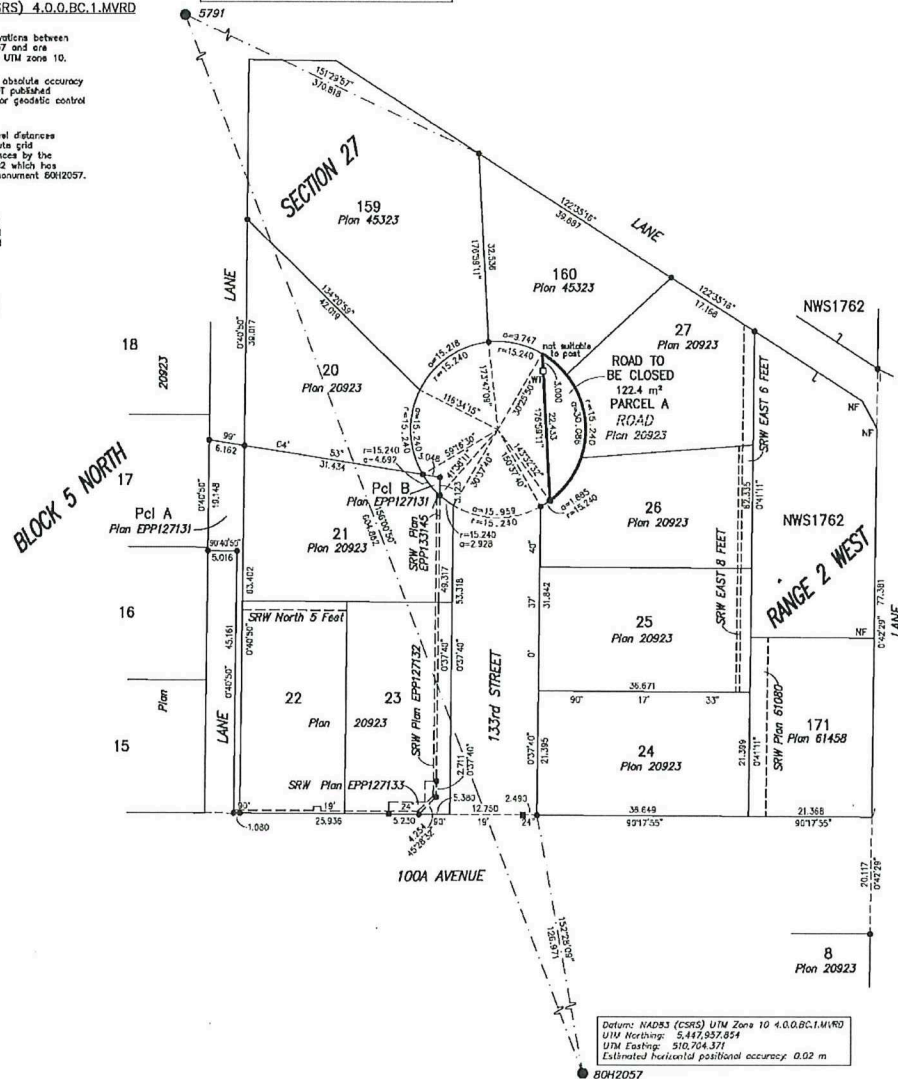
This plan shows horizontal ground-level distances
unless otherwise specified. To compute grid
distances, multiply ground-level distances by the
average combined factor of 0.9995802 which has
been derived from geodetic control monument 80H2057.

Legend:

- Denotes control monument found
- Denotes standard iron post found
- Denotes standard lead plug found
- Denotes standard iron post set
- Denotes standard lead plug set
- NF Denotes nothing found
- WT Denotes witness

Note: This plan shows one or more
witness points which are not set on
the true corner(s).
Witness points are set along the
production of a boundary unless
otherwise noted.
Some symbols and lines have been
exaggerated for clarity.

Datum: NAD83 (CSRS) UTM Zone 10 4.0.0.BC.1.MVRD
UTM Northing: 5,448,010.256
UTM Easting: 570,458.588
Estimated horizontal positional accuracy: 0.02 m



Datum: NAD83 (CSRS) UTM Zone 10 4.0.0.BC.1.MVRD
UTM Northing: 5,447,937.854
UTM Easting: 570,704.371
Estimated horizontal positional accuracy: 0.02 m

Cameron Land Surveying Ltd.
B.C. Land Surveyors
Unit 234 - 18525-53rd Avenue
Surrey, B.C. V3S 7K4
Phone: 604-597-3777
File: 8507-REF

This plan lies within the Metro Vancouver Regional District

The field survey represented by this plan was
completed on the 9th day of April, 2024.
Sean Costello, B.C.L.S. (900)