

CITY OF SURREY

BYLAW NO. 20804

A Bylaw to close and to remove the dedication
of a highway of portion of Lane
.....

WHEREAS pursuant to Subsection 40(1)(a) of the *Community Charter*, S.B.C. 2003, c. 26, the Council may, by bylaw, close all or part of a highway that is vested in the municipality to all or some types of traffic;

AND WHEREAS pursuant to Section 40(2) of the *Community Charter*, S.B.C. 2003, c. 26, the Council may, by bylaw, remove the dedication of a highway that has been closed by a bylaw under Subsection 40(1)(a).

NOW, THEREFORE the Council of the City of Surrey ENACTS as follows:

1. That portion of Lane lying in Section 14, Township 1, New Westminster District, Plan 18585 shown outlined in heavy black line on a Reference Plan EPP109931 attached hereto, prepared by Curtis Van Hove, B.C.L.S. on the 18th day of January, 2023, and described as follows:

That portion of Lane labeled Parcel 1 containing 112.4 square metre.

(hereinafter referred to as that portion of Lane)

shall be closed to traffic.

2. The dedication as highway be removed of said portion of Lane.
3. This Bylaw may be cited for all purposes as "Surrey Close and Remove the Dedication of Highway of a Portion of Lane Adjacent to 15751, 15853, 15861, 15885 – 16th Avenue and 15827 to 15875 Alder Place, Bylaw, 2023, No. 20804".

PASSED FIRST READING on the 6th day of March, 2023.

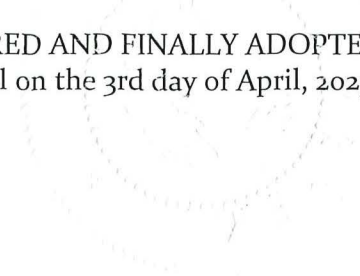

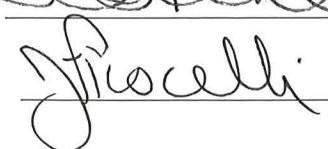
PASSED SECOND READING on the 6th day of March, 2023.

PASSED THIRD READING on the 6th day of March, 2023.

NOTICE OF INTENTION ADVERTISED on the 23rd and 30th day of March, 2023, in the PEACE ARCH NEWS newspaper.

RECEIVED APPROVAL FROM THE MINISTRY OF TRANSPORTATION AND INFRASTRUCTURE on the 7th day of March, 2023.

RECONSIDERED AND FINALLY ADOPTED, signed by the Mayor and Clerk, and sealed with the Corporate Seal on the 3rd day of April, 2023.


 MAYOR
 CLERK

REFERENCE PLAN TO ACCOMPANY
 BYLAW No. 20804 (CITY OF SURREY)
 TO CLOSE LANE DEDICATED ON
 PLAN 18585 SOUTH EAST QUARTER SECTION 14 TOWNSHIP 1
 NEW WESTMINSTER DISTRICT

PURSUANT TO SECTION 120 OF THE LAND TITLE ACT AND SECTION 40 OF THE COMMUNITY CHARTER
 BCGS 92G.007



ALL DISTANCES ARE IN METRES
 THE INTENDED PLOT SIZE OF THIS PLAN IS 560 mm IN WIDTH BY
 432 mm IN HEIGHT (C SIZE) WHEN PLOTTED AT A SCALE OF 1:500

THIS PLAN LIES WITHIN INTEGRATED SURVEY AREA NO. 1,
 SURREY, BC, NAD83 (CSRS) 4.0.0.BC.1.MVRD.

GRID BEARINGS ARE DERIVED FROM OBSERVATIONS
 BETWEEN GEODETIC CONTROL MONUMENTS 92H0855 AND 5756
 AND ARE REFERRED TO THE CENTRAL MERIDIAN OF UTM ZONE 10

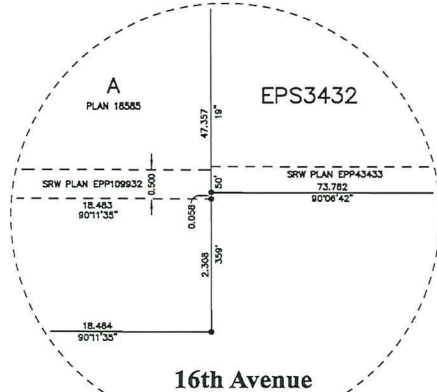
THE UTM COORDINATES AND ESTIMATED ABSOLUTE ACCURACY ACHIEVED
 ARE DERIVED FROM MASCOI PUBLISHED COORDINATES AND STANDARD
 DEVIATIONS FOR GEODETIC CONTROL MONUMENTS 92H0855 AND 5756

THIS PLAN SHOWS HORIZONTAL GROUND-LEVEL DISTANCES UNLESS
 OTHERWISE SPECIFIED, TO COMPUTE GRID DISTANCES, MULTIPLY
 GROUND-LEVEL DISTANCES BY THE AVERAGE COMBINED FACTOR OF
 0.99925655. THE AVERAGE COMBINED FACTOR HAS BEEN DETERMINED
 FROM CONTROL MONUMENTS 92H0855 AND 5756

LEGEND

- ⊙ INDICATES CONTROL MONUMENT FOUND
- INDICATES STANDARD IRON POST FOUND
- INDICATES STANDARD IRON POST PLACED

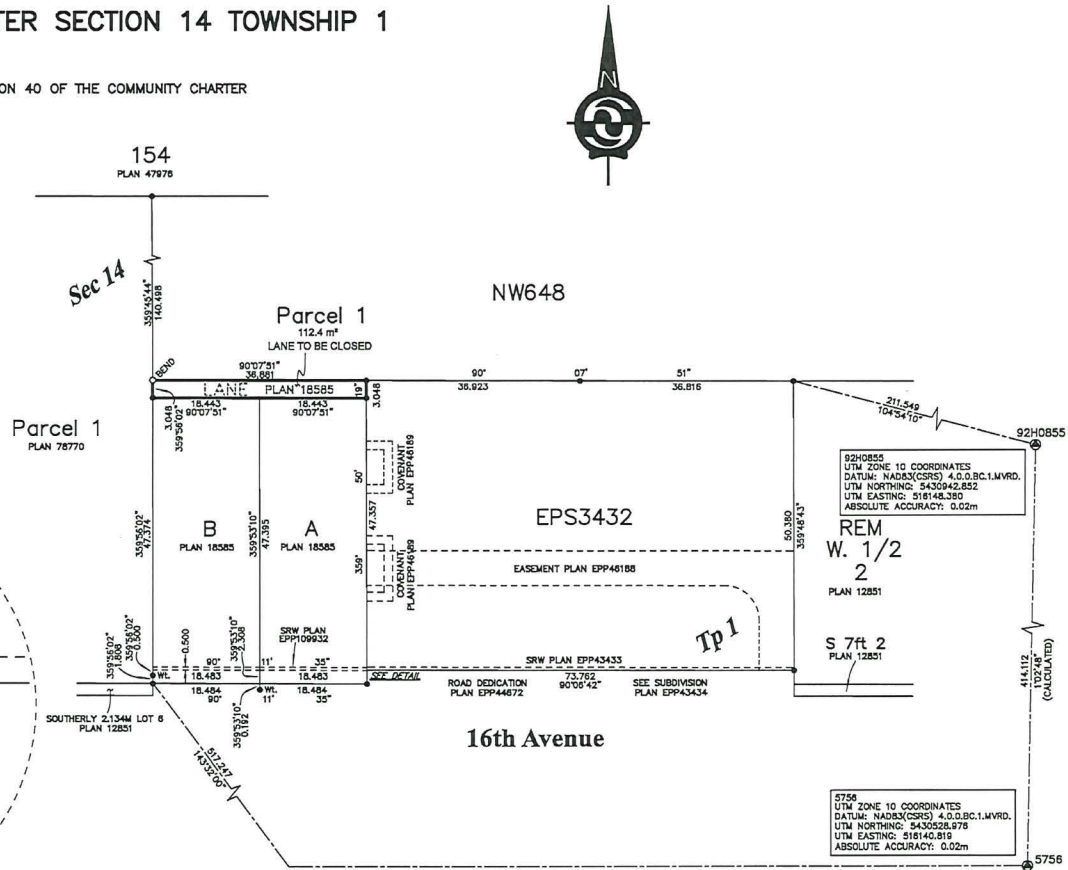
THIS PLAN SHOWS ONE OR MORE WITNESS POSTS
 WHICH ARE NOT SET ON THE TRUE CORNER(S)



DETAIL



H.Y. AND ASSOCIATES
 LAND SURVEYING LTD.
 200, 9128 - 152nd STREET
 SURREY, B.C.
 V3R 4E7
 (ph) 604-583-1818
 File: 184948_RD.DWG



92H0855
 UTM ZONE 10 COORDINATES
 DATUM: NAD83(CSRS) 4.0.0.BC.1.MVRD.
 UTM NORTHING: 5430942.852
 UTM EASTING: 518148.350
 ABSOLUTE ACCURACY: 0.02m

5756
 UTM ZONE 10 COORDINATES
 DATUM: NAD83(CSRS) 4.0.0.BC.1.MVRD.
 UTM NORTHING: 5430528.978
 UTM EASTING: 518140.818
 ABSOLUTE ACCURACY: 0.02m

THIS PLAN LIES WITHIN THE METRO VANCOUVER
 REGIONAL DISTRICT - CITY OF SURREY
 THE FIELD SURVEY REPRESENTED BY THIS PLAN
 WAS COMPLETED ON THE 18th DAY OF JANUARY, 2023
 CURTIS VAN HOVE, BOLS #1047

