

CITY OF SURREY

BYLAW NO. 20783

A Bylaw to close and to remove the dedication
of a highway of portion of Lane
.....

WHEREAS pursuant to Subsection 40(1)(a) of the *Community Charter*, S.B.C. 2003, c. 26, the Council may, by bylaw, close all or part of a highway that is vested in the municipality to all or some types of traffic;

AND WHEREAS pursuant to Section 40(2) of the *Community Charter*, S.B.C. 2003, c. 26, the Council may, by bylaw, remove the dedication of a highway that has been closed by a bylaw under Subsection 40(1)(a).

NOW, THEREFORE the Council of the City of Surrey ENACTS as follows:

1. That portion of Lane lying in Section 34, Township 2, NWD Plan 14222 shown outlined in heavy black line on a Reference Plan EPP126303 attached hereto, prepared by Peng Zhao, B.C.L.S. on the 12th day of December, 2022, and described as follows:

That portion of Lane labeled Pcl A containing 298.2 square metres.

(hereinafter referred to as that portion of Lane)

shall be closed to traffic.

2. The dedication as highway be removed of said portion of Lane.
3. This Bylaw may be cited for all purposes as "Surrey Close and Remove the Dedication of Highway of Portion of Lane Adjacent to 9039 – 152 Street and 15145 to 15161, 15167, 15181 Fraser Highway, Bylaw, 2023, No. 20783".

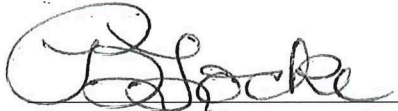
PASSED FIRST READING on the 16th day of January, 2023.


PASSED SECOND READING on the 16th day of January, 2023.

PASSED THIRD READING on the 16th day of January, 2023.

NOTICE OF INTENTION ADVERTISED on the 19th and 26th day of January, 2023, in the SURREY NOW LEADER newspaper.

RECONSIDERED AND FINALLY ADOPTED, signed by the Mayor and Clerk, and sealed with the Corporate Seal on the 30th day of January, 2023.

 MAYOR

 CLERK

REFERENCE PLAN TO ACCOMPANY
 HIGHWAY DEDICATION CANCELLATION BYLAW NO 20783 CITY OF SURREY
 TO CLOSE PART OF LANE DEDICATED ON PLAN 14222
 SECTION 34 TOWNSHIP 2 NEW WESTMINSTER DISTRICT
 B.C.G.S. 92G. 016

PLAN EPP126303

PURSUANT TO SECTION 120 OF THE LAND TITLE ACT AND
 SECTION 40 OF THE COMMUNITY CHARTER.

GDMS(CSRS)	4.0.0.BC.1.MVRD	UTM	ZONE	10	COORDINATES
GM	NORTHING	EASTING	ABSOLUTE ACCURACY		
8775	5446398.233	514075.341	0.03		
5852	5446393.526	514485.954	0.02		



THE INTENDED PLOT SIZE OF THIS PLAN IS 432mm IN WIDTH
 BY 560mm IN HEIGHT (C SIZE SHEET) WHEN PLOTTED AT A
 SCALE OF 1:500

LEGEND

- ⊙ DENOTES CONTROL MONUMENT FOUND
- DENOTES LEAD PLUG FOUND
- DENOTES STANDARD IRON POST FOUND
- DENOTES STANDARD IRON POST SET
- ⊕ DENOTES UNMONUMENTED POINT
- BUB DENOTES BENT, USED BASE
- Ex. DENOTES EXPLANATORY
- NTS DENOTES NOT TO SCALE
- Pcl DENOTES PARCEL
- PP DENOTES POSTING PLAN
- PL DENOTES PART OF
- UD DENOTES UNKNOWN ORIGIN
- URP DENOTES UNSUITABLE FOR REFERENCE MARKER

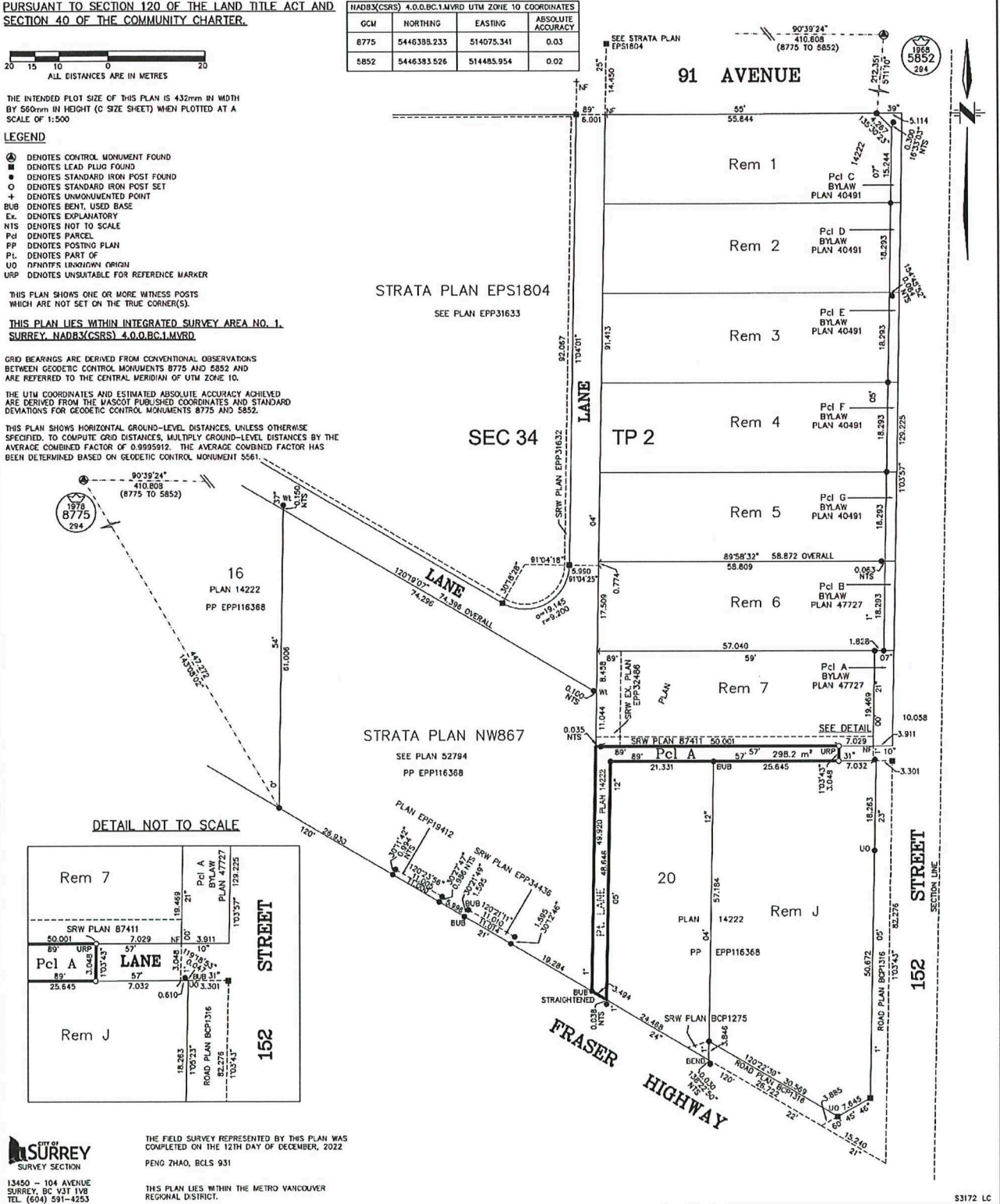
THIS PLAN SHOWS ONE OR MORE WITNESS POSTS
 WHICH ARE NOT SET ON THE TRUE CORNER(S).

THIS PLAN LIES WITHIN INTEGRATED SURVEY AREA NO. 1,
 SURREY, NAD83(CSRS) 4.0.0.BC.1.MVRD

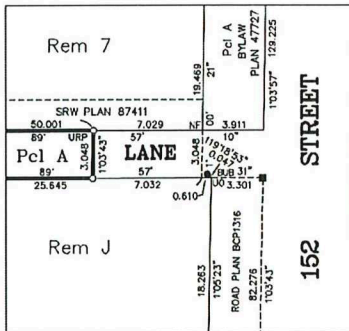
GRID BEARINGS ARE DERIVED FROM CONVENTIONAL OBSERVATIONS
 BETWEEN GEODETIC CONTROL MONUMENTS 8775 AND 5852 AND
 ARE REFERRED TO THE CENTRAL MERIDIAN OF UTM ZONE 10.

THE UTM COORDINATES AND ESTIMATED ABSOLUTE ACCURACY ACHIEVED
 ARE DERIVED FROM THE MASCOOT PUBLISHED COORDINATES AND STANDARD
 DEVIATIONS FOR GEODETIC CONTROL MONUMENTS 8775 AND 5852.

THIS PLAN SHOWS HORIZONTAL GROUND-LEVEL DISTANCES, UNLESS OTHERWISE
 SPECIFIED. TO COMPUTE GRID DISTANCES, MULTIPLY GROUND-LEVEL DISTANCES BY THE
 AVERAGE COMBINED FACTOR OF 0.9995912. THE AVERAGE COMBINED FACTOR HAS
 BEEN DETERMINED BASED ON GEODETIC CONTROL MONUMENT 5561.



DETAIL NOT TO SCALE



CITY OF SURREY
 SURVEY SECTION
 13450 - 104 AVENUE
 SURREY, BC V3T 1V8
 TEL. (604) 591-4253

THE FIELD SURVEY REPRESENTED BY THIS PLAN WAS
 COMPLETED ON THE 12TH DAY OF DECEMBER, 2022
 PENG ZHAO, BCLS 931
 THIS PLAN LIES WITHIN THE METRO VANCOUVER
 REGIONAL DISTRICT.