

CITY OF SURREY

BYLAW NO. 20476

A Bylaw to close and to remove the dedication  
of a highway of portions of Road  
.....

WHEREAS pursuant to Subsection 40(1)(a) of the *Community Charter*, S.B.C. 2003, c. 26, the Council may, by bylaw, close all or part of a highway that is vested in the municipality to all or some types of traffic;

AND WHEREAS pursuant to Section 40(2) of the *Community Charter*, S.B.C. 2003, c. 26, the Council may, by bylaw, remove the dedication of a highway that has been closed by a bylaw under Subsection 40(1)(a).

NOW, THEREFORE the Council of the City of Surrey ENACTS as follows:

1. That portion of road lying in Section 6, Township 7, NWD Plan 373 shown outlined in heavy black line on a Reference Plan EPP95813 attached hereto, prepared by Sean Costello, B.C.L.S. on the 25th day of November, 2021, and described as follows:

That portion of Road labeled Parcel 'A' containing 438.0 square metres.

(hereinafter referred to as that portion of Road)

shall be closed to traffic.

2. The dedication as highway be removed of said portion of Road.
3. This Bylaw may be cited for all purposes as "Surrey Close and Remove the Dedication of Highway of Portion of Road Adjacent to 17146 and 17141 - oA Avenue, Bylaw, 2022, No. 20476".

PASSED FIRST READING on the 17th day of January, 2022.

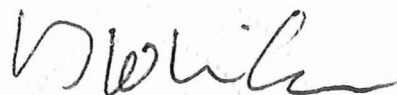
PASSED SECOND READING on the 17th day of January, 2022.

PASSED THIRD READING on the 17th day of January, 2022.

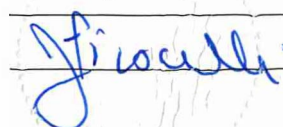
RECEIVED APPROVAL FROM THE MINISTRY OF TRANSPORTATION AND INFRASTRUCTURE on the 18th day of January, 2022.

NOTICE OF INTENTION ADVERTISED on the 20th and 27th day of January, 2022, in the PEACE ARCH newspaper.

RECONSIDERED AND FINALLY ADOPTED, signed by the Mayor and Clerk, and sealed with the Corporate Seal on the 31st day of January, 2022.



MAYOR



CLERK

**REFERENCE PLAN TO ACCOMPANY BYLAW NO. 20476 (CITY OF SURREY)  
TO CLOSE PART OF ROAD DEDICATED ON PLAN 373,  
SECTION 6, TOWNSHIP 7, NEW WESTMINSTER DISTRICT**

**PLAN EPP95813**

Pursuant to Section 120 of the Land Title Act  
Section 40 of the Community Charter  
City of Surrey BCGS 92G.007



SCALE - 1 : 500  
All distances are in metres

The intended plot size of this plan is 560mm  
in width by 432mm in height (C Size)

Integrated Survey Area No. 1  
City of Surrey NAD83 (CSRS) 4.0.0.BC.1.GVRD

Old Bearings are derived from observations between  
Control Monuments no. 86H1284 & 86H1278 and are  
referenced to the central meridian of UTM zone 10.

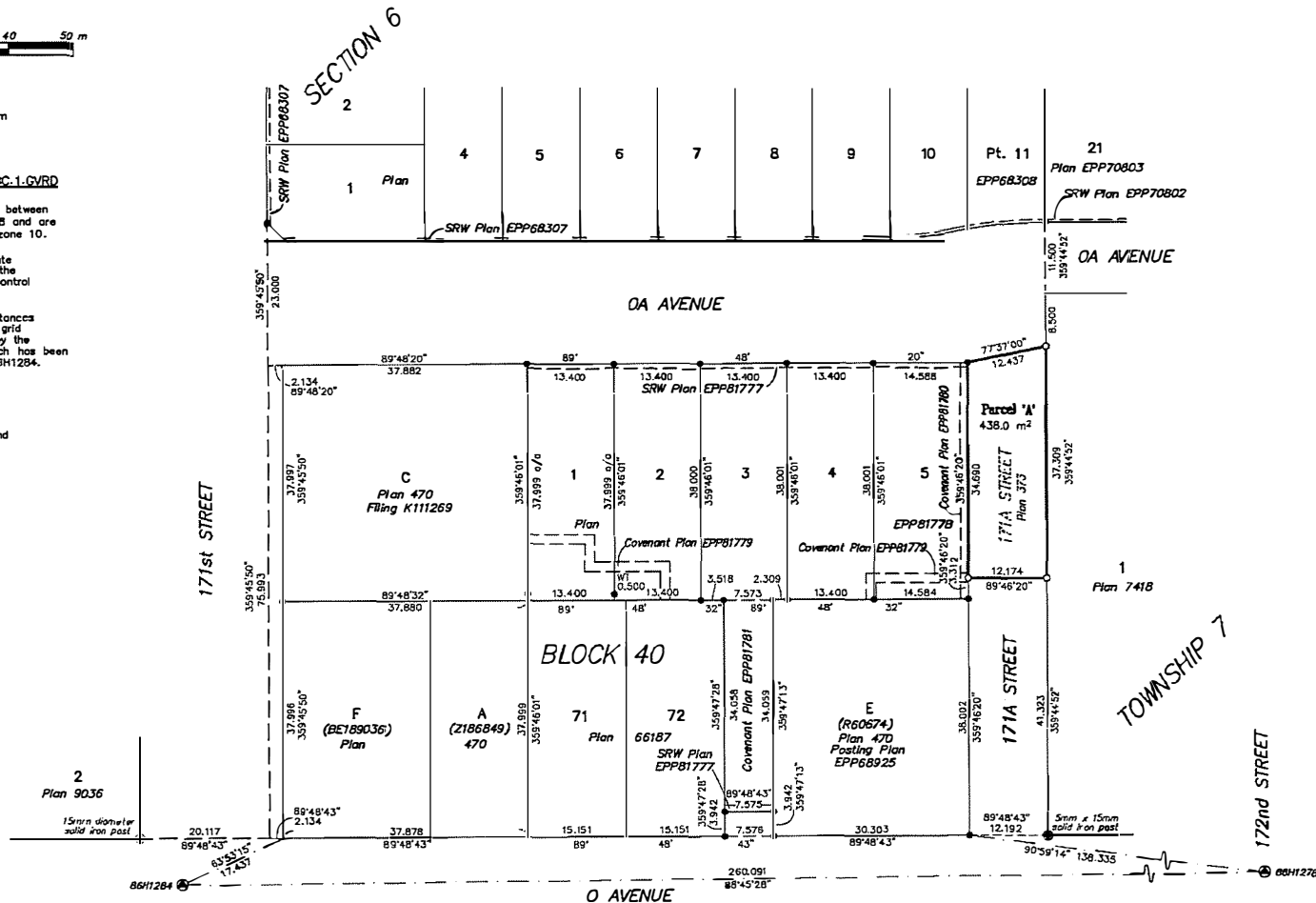
The UTM co-ordinates and estimated absolute  
accuracy achieved have been derived from the  
latest published coordinates for geodetic control  
monuments 86H1284 & 86H1278.

This plan shows horizontal ground-level distances  
except where otherwise noted. To compute grid  
distances, multiply ground-level distances by the  
average combined factor of 0.9996045 which has been  
derived from geodetic control monument 86H1284.

**Legend:**

- ⊙ Denotes control monument found
- Denotes standard iron post found
- ⊕ Denotes non-standard iron post found
- Denotes standard iron post set
- WT Denotes witness
- Rem. Denotes remainder
- o/o Denotes over all

Note: This plan shows one or  
more witness posts which are not  
set on the true corner(s).  
Witness posts are set along the  
production of a boundary unless  
otherwise noted.  
Some symbols and lines have  
been exaggerated for clarity.



Datum: NAD83 (CSRS) UTM Zone 10 4.0.0.BC.1.GVRD  
UTM Northing: 5,427,721.010  
UTM Easting: 518,295,306  
Absolute accuracy: 0.02 m

Datum: NAD83 (CSRS) UTM Zone 10 4.0.0.BC.1.GVRD  
UTM Northing: 5,427,726.647  
UTM Easting: 518,555,833  
Absolute accuracy: 0.02 m

Cameron Land Surveying Ltd.  
B.C. Land Surveyors  
Unit 234 - 18525 53RD AVENUE  
Surrey, B.C. V3S 7M4  
Phone: 604-597-3777  
File: 5809-REF4

The field survey represented by this plan was  
completed on the 25th day of November, 2021.  
Sean Costello, BOLS 900