

CITY OF SURREY

BYLAW NO. 20311

A Bylaw to close and to remove the dedication
of a highway of portions of road
.....

WHEREAS pursuant to Subsection 40(1)(a) of the *Community Charter*, S.B.C. 2003, c. 26,
the Council may, by bylaw, close all or part of a highway that is vested in the municipality to all or
some types of traffic;

AND WHEREAS pursuant to Section 40(2) of the *Community Charter*, S.B.C. 2003, c. 26, the
Council may, by bylaw, remove the dedication of a highway that has been closed by a bylaw under
Subsection 40(1)(a).

NOW, THEREFORE the Council of the City of Surrey ENACTS as follows:

1. Those portions of road lying in Section 3, Township 2, NWD Plan EPP 109810, shown
outlined in heavy black line on a Reference Plan attached hereto, prepared by Gregory
Marston, B.C.L.S. on the 10th day of March 2021, and described as follows:

That portion of road lying in Section 3, Township 2, NWD Plan BCP8459, labeled 'PCL A'
containing 4.5 square metres; and

That portion of road lying in Section 3, Township 2, NWD Plan BCP1777, labeled 'PCL B'
containing 1,945.2 square metres

(hereinafter referred to as those Portions of Road)

shall be closed to traffic.

2. The dedication as highway be removed of said Portions of Road.
3. This Bylaw may be cited for all purposes as "Surrey Close and Remove the Dedication of
Highway of Portions of Road Adjacent to 15000 and 15050 – 54A Avenue and 14933 Colebrook
Road Bylaw, 2021, No. 20311".

PASSED FIRST READING on the 12th day of April, 2021.

PASSED SECOND READING on the 12th day of April, 2021.


PASSED THIRD READING on the 12th day of April, 2021.

NOTICE OF INTENTION ADVERTISED on the 15th and 22nd day of April, 2021, in the
SURREY NOW LEADER newspaper.

RECEIVED approval from the MINISTRY OF TRANSPORTATION AND INFRASTRUCTURE on the
21st day of April, 2021

RECONSIDERED AND FINALLY ADOPTED, signed by the Mayor and Clerk, and sealed with the
Corporate Seal on the 26th day of April, 2021.

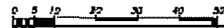
 MAYOR

 CLERK

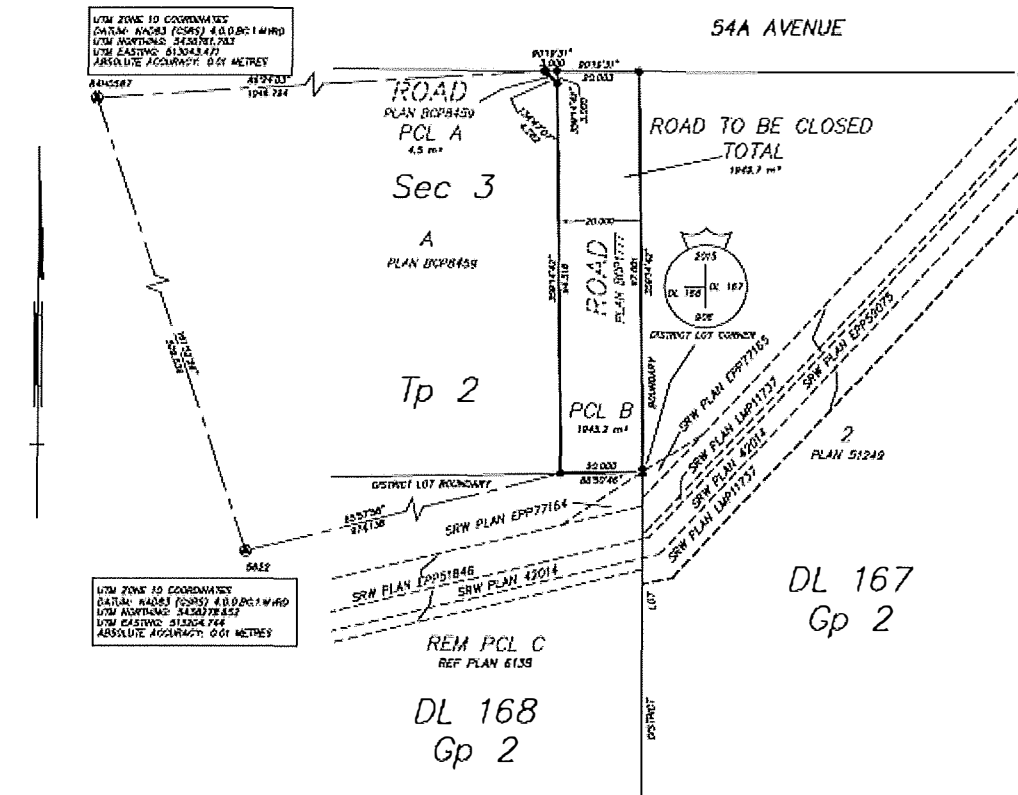
REFERENCE PLAN TO ACCOMPANY
 BYLAW NUMBER 20311 (CITY OF SURREY) TO CLOSE
 PORTIONS OF ROAD DEDICATED ON PLAN BCP1777
 AND BCP8459 BOTH OF SECTION 3 TOWNSHIP 2
 NEW WESTMINSTER DISTRICT

PURSUANT TO SECTION 120 OF THE LAND TITLE ACT
 AND SECTION 40 OF THE COMMUNITY CHARTER

BCCS 92G.016



ALL DISTANCES ARE IN METRES
 THE INTENDED PLOT SIZE OF THIS PLAN IS SECTION 3 WITHIN BY 4300m IN HEIGHT
 (0.525) WHEN PLOTTED AT A SCALE OF 1:750



UTM ZONE 10 COORDINATES
 DATUM: NAD83 (CSRS) 410.00214490
 UTM NORTHING: 5428761.7011
 UTM EASTING: 613043.477
 ABSOLUTE ACCURACY: 0.01 METRES

UTM ZONE 10 COORDINATES
 DATUM: NAD83 (CSRS) 410.00214490
 UTM NORTHING: 5428761.7011
 UTM EASTING: 613043.477
 ABSOLUTE ACCURACY: 0.01 METRES

- LEGEND:**
- ⊙ BENCH MARK CONTROL MONUMENT FOUND
 - ⊙ BENCH MARK STATIONED WITH JUST FOUND
 - ⊙ BENCH MARK STATIONED CAPTURED JUST FOUND
 - ⊙ BENCH MARK FOUND
 - BENCH MARK REFERENCE

THIS PLAN LIES WITHIN INTEGRATED SURVEY AREA No.1,
 CITY OF SURREY, B.C. (CORS) 410.00214490

GRID BEARINGS ARE DERIVED FROM OBSERVATIONS BETWEEN
 GEODETIC CONTROL MONUMENTS 805257 AND 8052
 AND ARE REFERENCED TO THE CENTRAL MERIDIAN OF UTM ZONE 10

THE UTM COORDINATES AND ESTIMATED ABSOLUTE ACCURACY SHOWN
 ARE DERIVED FROM THE LATEST PUBLISHED COORDINATES AND
 STANDARD DEVIATIONS FOR GEODETIC CONTROL MONUMENTS 805257 AND 8052

THIS PLAN SHOWS HORIZONTAL GROUND LEVEL DISTANCES
 UNLESS OTHERWISE SPECIFIED. TO COMPUTE GRID DISTANCES
 AND THE CORRECTED LEVEL DISTANCES BY THE AVERAGE CORRECTION
 FACTOR OF 0.000037, THE AVERAGE CORRECTION FACTOR HAS BEEN
 DETERMINED FROM GEODETIC CONTROL MONUMENTS 805257 AND 8052

| BOOK OF REFERENCE | | | | |
|-------------------|----|--------|---------|----------------------------|
| Sec | Tp | DIST. | PLAN | AREA |
| 3 | 2 | N.W.D. | BCP8459 | 4.5m² |
| 3 | 2 | N.W.D. | BCP1777 | 1945.2m² |
| | | | | 1949.7m² TOTAL AREA |

APLIN & MARTIN
 SURVEYORS AND ENGINEERS
 250, 12548 ROAD 6
 SURREY, B.C. V3R 1K6 (604) 437-9429

THIS PLAN LIES WITHIN THE METRO VANCOUVER REGIONAL DISTRICT
 (CITY OF SURREY)

THE FIELD SURVEY REPRESENTED BY THIS PLAN WAS
 COMPLETED ON THE 10th DAY OF MARCH, 2021
 GREGORY MARSTON, BOLS 794
 FILE 38128-08 RD C30