

CITY OF SURREY

BYLAW NO. 20184

A Bylaw to close and to remove the dedication  
of a highway of portions of road  
.....

WHEREAS pursuant to Subsection 40(1)(a) of the *Community Charter*, S.B.C. 2003, c. 26, the Council may, by bylaw, close all or part of a highway that is vested in the municipality to all or some types of traffic;

AND WHEREAS pursuant to Section 40(2) of the *Community Charter*, S.B.C. 2003, c. 26, the Council may, by bylaw, remove the dedication of a highway that has been closed by a bylaw under Subsection 40(1)(a).

NOW, THEREFORE the Council of the City of Surrey ENACTS as follows:

1. That Portion of Road lying in Section 6, Township 9, dedicated by Plan EPP89511 and Plan 13306, together containing 489.6 square metres, shown outlined in heavy black line on Reference Plan EPP 102775, attached hereto, prepared by M. Adam Fulkerson, B.C.L.S. on the 8th day of July, 2019, and labeled as Lot '1',  
  
shall be closed to traffic.
2. The dedication as highway be removed of said Portion of Road.
3. This Bylaw may be cited for all purposes as "Surrey Close and Remove the Dedication of Highway of a Portion of Road Adjacent to 17494, 17502 and 17524 - 100 Avenue Bylaw, 2020, No. 20184".

PASSED FIRST READING on the 23rd day of November, 2020.


PASSED SECOND READING on the 3rd day of November, 2020.

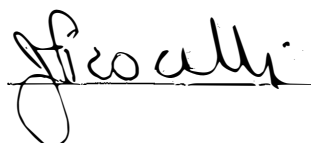
PASSED THIRD READING on the 23rd day of November, 2020.

RECEIVED APPROVAL FROM THE MINISTRY OF TRANSPORTATION AND INFRASTRUCTURE on the 30th day of November, 2020.

NOTICE OF INTENTION ADVERTISED on the 10th and 17th day of December, 2020, in the Surrey Now Leader newspaper.

RECONSIDERED AND FINALLY ADOPTED, signed by the Mayor and Clerk, and sealed with the Corporate Seal on the 21st day of December, 2020.

  
\_\_\_\_\_  
MAYOR

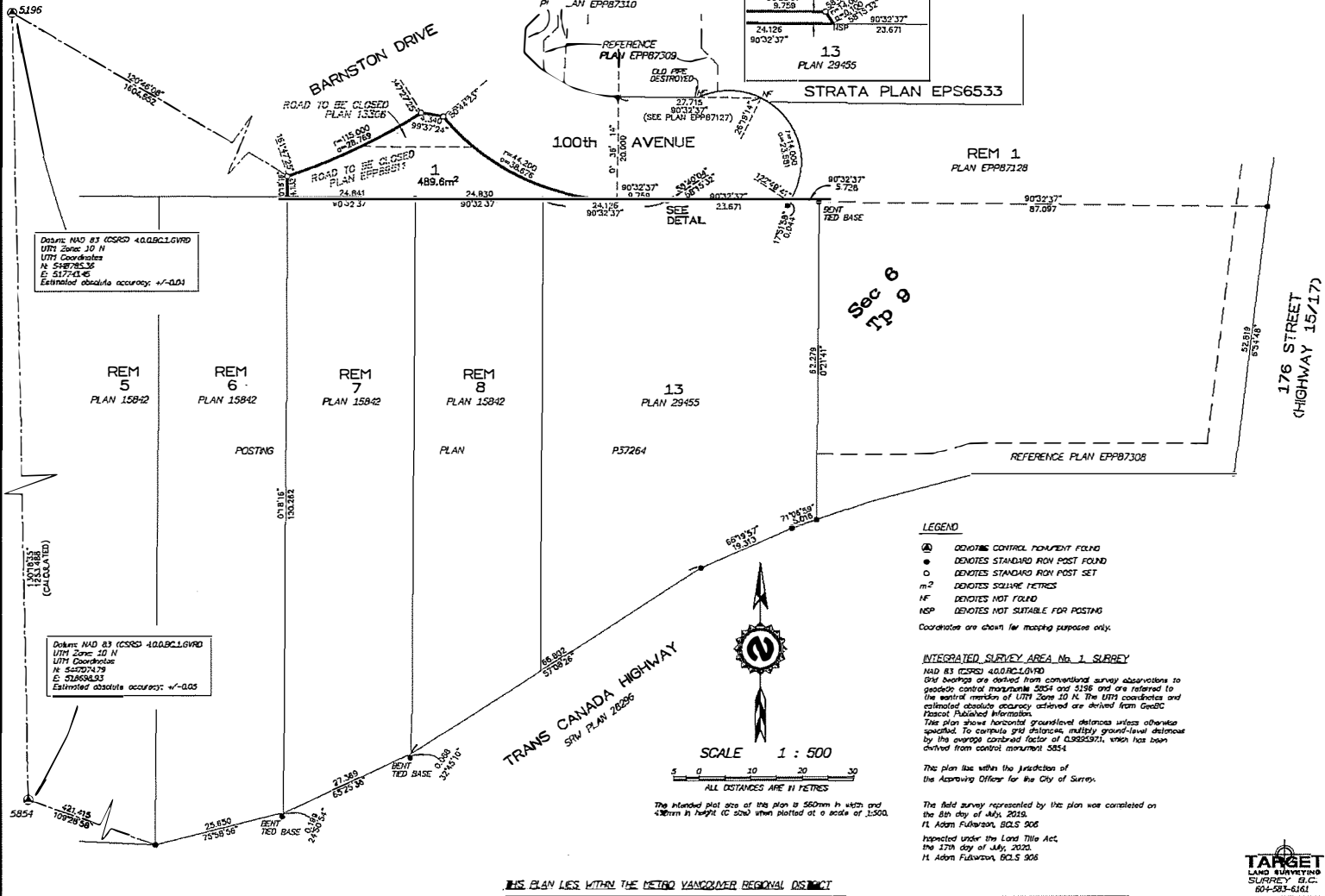
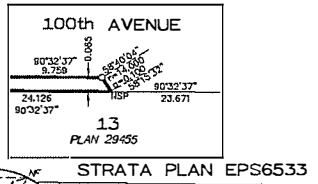
  
\_\_\_\_\_  
CLERK

**REFERENCE PLAN TO ACCOMPANY CITY OF SURREY BYLAW No. 20184  
TO CLOSE A PORTION OF ROAD DEDICATED ON PLANS EPP89511, AND 13306  
ALL OF SEC 6 TP 9 NWD**

**PLAN EPP102775**

S.C.G.S. 926.017  
PURSUANT TO SECTION 120, LAND TITLE ACT  
PURSUANT TO SECTION 40, COMPANY CHARTER

DETAIL SCALE 1:25



Datum: NAD 83 (CSRS) 40.0 BCL16VRD  
UTM Zone: 10 N  
UTM Coordinates  
N: 548785.36  
E: 517741.45  
Estimated absolute accuracy: +/-0.01

Datum: NAD 83 (CSRS) 40.0 BCL16VRD  
UTM Zone: 10 N  
UTM Coordinates  
N: 542974.79  
E: 518686.91  
Estimated absolute accuracy: +/-0.05

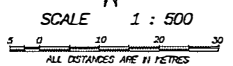
**LEGEND**

- ⊙ DENOTES CONTROL POINT FOUND
  - DENOTES STANDARD IRON POST FOUND
  - DENOTES STANDARD IRON POST SET
  - m<sup>2</sup> DENOTES SQUARE METRES
  - HF DENOTES HOT FOLD
  - NEP DENOTES NOT SUITABLE FOR POSTING
- Coordinates are shown for mapping purposes only.

**INTEGRATED SURVEY AREA No. 1 SURVEY**  
NAD 83 (CSRS) 40.0 BCL16VRD  
Grid bearings are derived from conventional survey observations to geodetic control monuments 5054 and 3156 and are referred to the central meridian of UTM Zone 10 N. The UTM coordinates and estimated absolute accuracy achieved are derived from Geosc. Canada Published Information.  
This plan shows horizontal ground-level distances unless otherwise specified. To compute grid distances, multiply ground-level distances by the average combined factor of 0.99999711, which has been derived from control monument 5054.

This plan lies within the jurisdiction of the Assessing Officer for the City of Surrey.

The field survey represented by the plan was completed on the 8th day of July, 2018.  
H. Adam Fuhrman, SOLS 906  
Inspected under the Land Title Act, the 27th day of July, 2018.  
H. Adam Fuhrman, SOLS 906



The intended plot size of this plan is 550mm in width and 400mm in height (C size) when plotted at a scale of 1:500.

**THIS PLAN LIES WITHIN THE METRO VANCOUVER REGIONAL DISTRICT**



FILE: 1805-1140