

CITY OF SURREY

BYLAW NO. 20079

A Bylaw to close and to remove the dedication
of a highway of portions of road
.....

WHEREAS pursuant to Subsection 40(1)(a) of the *Community Charter*, S.B.C. 2003, c. 26, the Council may, by bylaw, close all or part of a highway that is vested in the municipality to all or some types of traffic;

AND WHEREAS pursuant to Section 40(2) of the *Community Charter*, S.B.C. 2003, c. 26, the Council may, by bylaw, remove the dedication of a highway that has been closed by a bylaw under Subsection 40(1)(a).

NOW, THEREFORE the Council of the City of Surrey ENACTS as follows:

1. That Portion of Road lying in Section 28, Township 2, NWD Plan 4217 containing 9.0 square metres and that Portion of Road lying in Section 28, Township 2, NWD Plan LMP10673, containing 129.9 square metres, shown outlined in heavy black line on Reference Plan EPP 106026, attached hereto, prepared by Zheng Tong, B.C.L.S. on the 30th day of October, 2020, and labeled 'ROAD TO BE CLOSED',

shall be closed to traffic.
2. The dedication as highway be removed of said Portion of Road.
3. This Bylaw may be cited for all purposes as "Surrey Close and Remove the Dedication of Highway of a Portion of Road Adjacent to 8013 - 144 Street Bylaw, 2020, No. 20079".

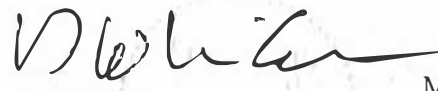
PASSED FIRST READING on the 23rd day of November, 2020.

PASSED SECOND READING on the 23rd day of November, 2020.

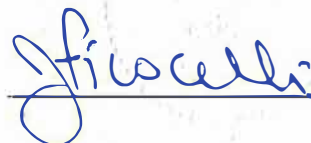
PASSED THIRD READING on the 23rd day of November, 2020.

NOTICE OF INTENTION ADVERTISED on the 26th day of November and the 3rd day of December, 2020, in the Surrey Now Leader newspaper.

RECONSIDERED AND FINALLY ADOPTED, signed by the Mayor and Clerk, and sealed with the Corporate Seal on the 7th day of December, 2020.



MAYOR



CLERK

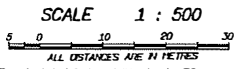
REFERENCE PLAN TO ACCOMPANY CITY OF SURREY HIGHWAY DEDICATION CANCELLATION BYLAW NO.20079 TO CLOSE PORTIONS OF ROAD DEDICATED ON PLAN 4217 AND PLAN LMP10675 ALL IN SECTION 28 TOWNSHIP 2 NEW WESTMINSTER DISTRICT

PLAN EPP106026

R.C.G.S. 92G.016
PURSUANT TO SECTION 120, LAND TITLE ACT
PURSUANT TO SECTION 40, COMMUNITY CHARTER

LEGEND

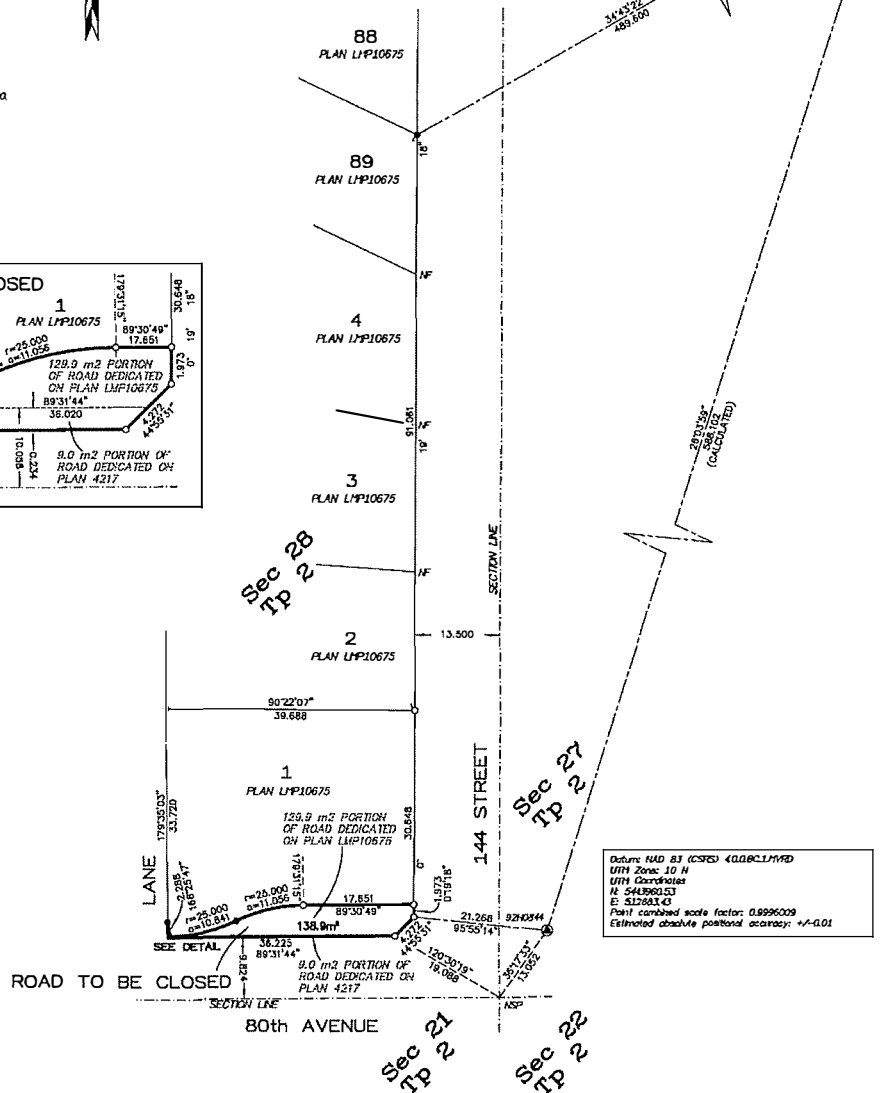
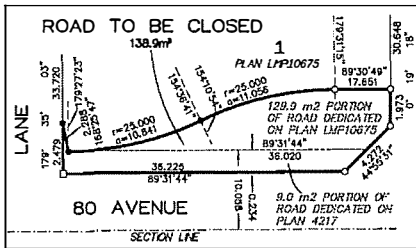
- ⊙ DENOTES CONTROL MONUMENT FOUND
- DENOTES STANDARD IRON POST FOUND
- DENOTES STANDARD IRON POST SET
- DENOTES LEAD PLUG SET
- m² DENOTES SQUARE METRES
- NF DENOTES NOT FOUND



The intended plot size of this plan is 420mm in width and 360mm in height (C size) when plotted at a scale of 1:500.

Datum: NAD 83 (CSRS) 40.00CL11MVD
UTM Zone: 10 N
UTM Coordinates
N: 5444628.07
E: 513141.75
Point combined scale factor: 0.9995385
Estimated absolute positional accuracy: +/-0.05

DETAIL NOT TO SCALE



Datum: NAD 83 (CSRS) 40.00CL11MVD
UTM Zone: 10 N
UTM Coordinates
N: 5443962.53
E: 512681.43
Point combined scale factor: 0.9996209
Estimated absolute positional accuracy: +/-0.01

INTEGRATED SURVEY AREA No. 1, SURREY
NAD 83 (CSRS) 40.00CL11MVD
Grid bearings are derived from conventional survey observations to grade-level control monuments 9246544 and 5597 and are referred to the central meridian of UTM Zone 10 N.
The UTM coordinates and estimated absolute positional accuracy obtained are derived from Geoscience BC published information.
This plan shows horizontal ground-level distances unless otherwise specified. To compute grid distances, multiply ground-level distances by the average combined factor of 0.9995609, which has been derived from control monument 9246544.

The field survey represented by this plan was completed on the 30th day of October, 2022.
Zheng Tong, B.C.S. 1011

THIS PLAN LIES WITHIN THE METRO VANCOUVER REGIONAL DISTRICT

TARGET
LAND SURVEYING
SURREY, B.C.
604-533-6161
FILE: 8721-REF