

CITY OF SURREY

BYLAW NO. 19818

A Bylaw to close and to remove the dedication
of a highway of portion of road

.....

WHEREAS pursuant to Subsection 40(1)(a) of the *Community Charter*, S.B.C. 2003, c. 26, the Council may, by bylaw, close all or part of a highway that is vested in the municipality to all or some types of traffic;

AND WHEREAS pursuant to Section 40(2) of the *Community Charter*, S.B.C. 2003, c. 26, the Council may, by bylaw, remove the dedication of a highway that has been closed by a bylaw under Subsection 40(1)(a).

NOW, THEREFORE the Council of the City of Surrey ENACTS as follows:

1. That portion of Section 14 Township 1 New Westminster District shown outlined in heavy black line on Reference Plan EPP92391 attached hereto and forming part of this bylaw, prepared by Gurpreet S. Kooner, B.C.L.S. on the 30th day of May, 2019, and described as follows:

that portion of unconstructed road allowance dedicated by Expropriation Act Section 23(1) Filling "BB599129", containing 0.201 hectares and labeled as Parcel 'A';

(hereinafter referred to as that portion of Road)

shall be closed to traffic.

2. The dedication as highway be removed of said portion of Road.
3. This Bylaw may be cited for all purposes as "Surrey Close and Remove the Dedication of Highway of a Portion of Road adjacent to 2312 – 156 Street (Gratitude Gardens) Bylaw, 2019, No. 19818".

PASSED FIRST READING on the 24th day of June, 2019.

PASSED SECOND READING on the 24th day of June, 2019.

PASSED THIRD READING on the 24th day of June, 2019.

RECEIVED APPROVAL FROM THE MINISTRY OF TRANSPORTATION AND INFRASTRUCTURE on the 25th day of June, 2019.

RECONSIDERED AND FINALLY ADOPTED, signed by the Mayor and Clerk, and sealed with the Corporate Seal on the 8th day of July, 2019.

_____ MAYOR

_____ CLERK

**REFERENCE PLAN TO ACCOMPANY CITY OF SURREY HIGHWAY DEDICATION
CANCELLATION BYLAW NUMBER 19818 OF A PORTION OF ROAD LYING IN
SECTION 14 TOWNSHIP 1 NEW WESTMINSTER DISTRICT DEDICATED BY
EXPROPRIATION ACT SECTION 23(1) FILING BB599129**

PLAN EPP92391

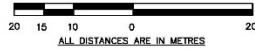
BCGS 92G.007

PURSUANT TO SECTION 120 OF THE LAND TITLE ACT
AND SECTION 40 OF THE COMMUNITY CHARTER

LEGEND

- DENOTES CONTROL MONUMENT FOUND
- DENOTES STANDARD IRON POST FOUND
- DENOTES STANDARD IRON POST SET
- (c) DENOTES CALCULATED
- ⊙ DENOTES COMMON AREA
- O/A DENOTES OVERALL

THIS PLAN SHOWS ONE OR MORE WITNESS POSTS WHICH ARE NOT SET ON THE TRUE CORNER(S).



THE INTENDED PLOT SIZE OF THIS PLAN IS 432mm IN WIDTH BY 560mm IN HEIGHT (C SIZE SHEET) WHEN PLOTTED AT A SCALE OF 1:500.

THIS PLAN LIES WITHIN INTEGRATED SURVEY AREA NO. 1,
SURREY, NAD83(CSRS) 4.0.0.BC.1.GVRD

GRID BEARINGS ARE DERIVED FROM GNSS OBSERVATIONS BETWEEN GEODETIC CONTROL MONUMENTS 5743 AND 5745.

THE UTM COORDINATES AND ESTIMATED ABSOLUTE ACCURACY ACHIEVED ARE DERIVED FROM MASCOIT PUBLISHED COORDINATES AND STANDARD DEVIATIONS FOR GEODETIC CONTROL MONUMENTS 5743 AND 5745.

THIS PLAN SHOWS HORIZONTAL GROUND-LEVEL DISTANCES, UNLESS OTHERWISE SPECIFIED, TO COMPUTE GRID DISTANCES, MULTIPLY GROUND-LEVEL DISTANCES BY THE AVERAGE COMBINED FACTOR OF 0.9995915 WHICH HAS BEEN DERIVED FROM GEODETIC CONTROL MONUMENTS 5743 AND 5745.

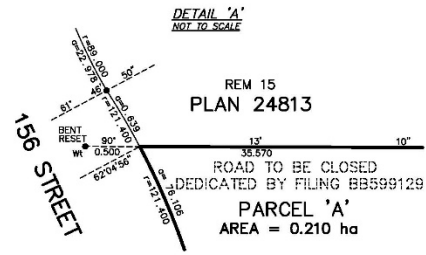
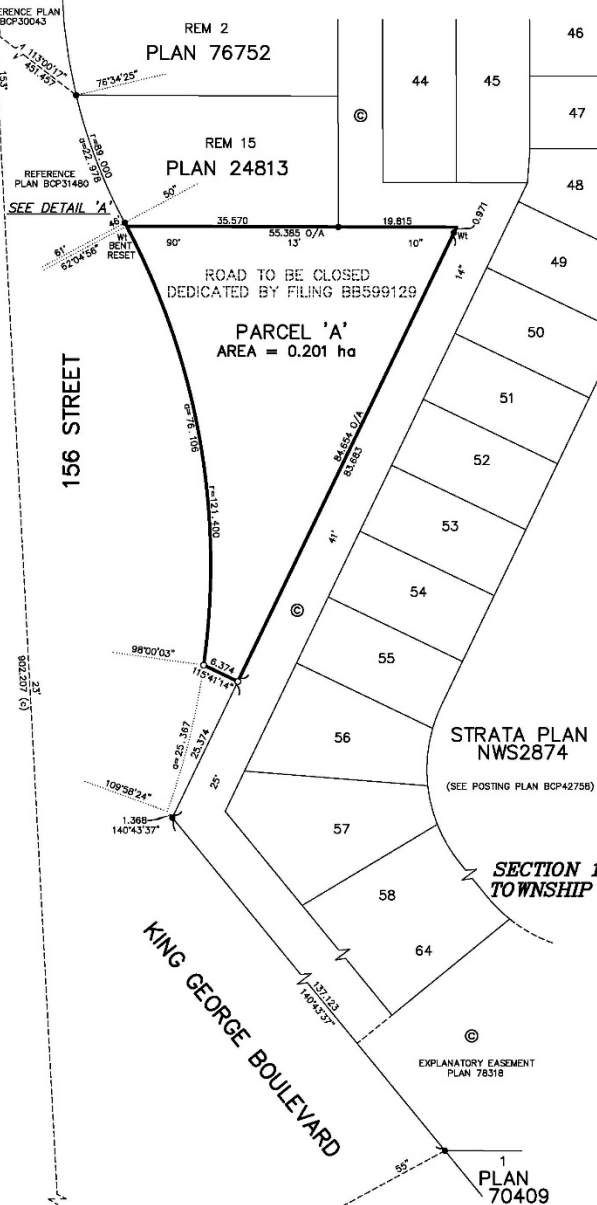


GEODETIC CONTROL MONUMENT 5743
NORTHING: 5432545.269
EASTING: 5144929.531
DATUM: NAD83(CSRS) 4.0.0.BC.1.GVRD
AVERAGE COMBINED FACTOR: 0.9995907
UTM ZONE: ZONE 10 NORTH
ABSOLUTE ACCURACY ACHIEVED: ±0.04m

REM 1
PLAN 6809

REM 2
PLAN 76752

REM 15
PLAN 24813



GEODETIC CONTROL MONUMENT 5745
NORTHING: 5431738.990
EASTING: 515333.545
DATUM: NAD83(CSRS) 4.0.0.BC.1.GVRD
AVERAGE COMBINED FACTOR: 0.9995922
UTM ZONE: ZONE 10 NORTH
ABSOLUTE ACCURACY ACHIEVED: ±0.02m

1/10th PROPERTY OF SURREY

CITY OF SURREY
SURVEY SECTION
13450 - 104 AVENUE
SURREY, BC V3T 1V8
TEL. (604) 591-4253

THIS PLAN LIES WITHIN THE METRO
VANCOUVER REGIONAL DISTRICT

THIS PLAN LIES WITHIN THE JURISDICTION OF
THE APPROVING OFFICER FOR THE CITY OF SURREY.

THE FIELD SURVEY REPRESENTED BY
THIS PLAN WAS COMPLETED ON
THE 29th DAY OF MAY, 2019
GURPREET S. KOONER, BOLS 937

FILE: S2728G
PLOT: 2019/05/30
MAP: 124