

CITY OF SURREY

BYLAW NO. 19781

A Bylaw to close and to remove the dedication
of a highway of portion of road
.....

WHEREAS pursuant to Subsection 40(1)(a) of the *Community Charter*, S.B.C. 2003, c. 26, the Council may, by bylaw, close all or part of a highway that is vested in the municipality to all or some types of traffic;

AND WHEREAS pursuant to Section 40(2) of the *Community Charter*, S.B.C. 2003, c. 26, the Council may, by bylaw, remove the dedication of a highway that has been closed by a bylaw under Subsection 40(1)(a).

NOW, THEREFORE the Council of the City of Surrey ENACTS as follows:

1. That portion of Section 13 Township 1 New Westminster District shown outlined in heavy black line on Reference Plan EPP90290 attached hereto and forming part of this bylaw, prepared by Joginder S. Riar, B.C.L.S. on the 14th day of February, 2019, and described as follows:

that portion of unconstructed road allowance dedicated by Plan 58204, containing 146.1 square metres and labeled as "A";

(hereinafter referred to as that portion of Road)

shall be closed to traffic.

2. The dedication as highway be removed of said portions of Road.
3. This Bylaw may be cited for all purposes as "Surrey Close and Remove the Dedication of Highway of a Portion of Road adjacent to 16470 and 16510 – 18 Avenue Bylaw, 2019, No. 19781".

PASSED FIRST READING on the 11th day of March, 2019.

PASSED SECOND READING on the 11th day of March, 2019.

PASSED THIRD READING on the 11th day of March, 2019.

RECEIVED APPROVAL FROM THE MINISTRY OF TRANSPORTATION AND INFRASTRUCTURE on the 28th day of March, 2019.

RECONSIDERED AND FINALLY ADOPTED, signed by the Mayor and Clerk, and sealed with the Corporate Seal on the 1st day of April, 2019.

 MAYOR

 CLERK

REFERENCE PLAN TO ACCOMPANY
 BYLAW NO. 19781 CITY OF SURREY
 TO CLOSE PART OF ROAD DEDICATED ON
 PLAN 58204, SECTION 13, TOWNSHIP 1,
 NEW WESTMINSTER DISTRICT

BCDS 926.007

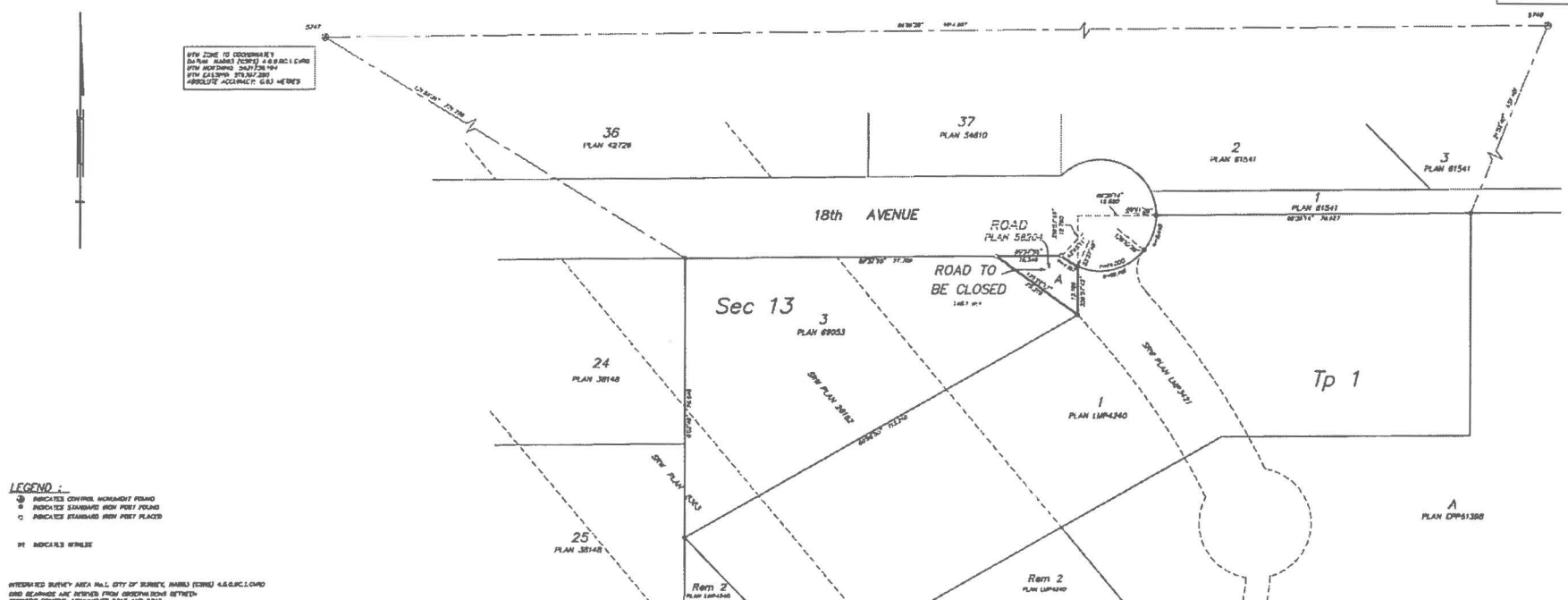


ALL DISTANCES ARE IN METERS
 THE HORIZONTAL POSITION OF THIS PLAN IS 86mm IN WIDTH BY 360mm IN HEIGHT
 IS 3000 WHEN PRINTED AT A SCALE OF 1:500

PURSUANT TO SECTION 120 OF THE LAND TITLE ACT AND
 SECTION 40 OF THE COMMUNITY CHARTER

NEW ZONE IS CONSIDERED
 DATA: HARRY (2007) 1:8.8 BCIC (4)8
 NEW NORTHING: 541728.94
 NEW EASTING: 878367.289
 ABSOLUTE ACCURACY: 0.63 METERS

THIS ZONE IS CONSIDERED
 DATA: HARRY (2007) 1:8.8 BCIC (4)8
 NEW NORTHING: 541728.94
 NEW EASTING: 878367.289
 ABSOLUTE ACCURACY: 0.63 METERS



- LEGEND:**
- ⊙ INDICATES CONTROL MONUMENT FOUND
 - ⊙ INDICATES STANDARD IRON PILE FOUND
 - INDICATES STANDARD IRON PILE PLACED
 - BT INDICATES BENCH

INTERFERED SURVEY AREA IN L. CITY OF SURREY, HARRY (2007) 1:8.8 BCIC (4)8
 AND BEARINGS ARE DERIVED FROM GEODESIC DATA BETWEEN
 GEODESIC CONTROL MONUMENTS 2517 AND 2518.
 THE UTM COORDINATES AND ESTIMATED ABSOLUTE ACCURACY ADAPTED
 ARE DERIVED FROM THE METRO VANCOUVER REGIONAL DISTRICT AND
 STANDARD DATA FOR GEODESIC CONTROL MONUMENTS 2517 AND 2518.
 THIS PLAN SHOWS HORIZONTAL (GROUND LEVEL) DISTANCES
 UNLESS OTHERWISE SPECIFIED. TO COMPUTE GRID DISTANCES
 UNLESS OTHERWISE SPECIFIED, DISTANCES BY THE AVERAGE CORRECTION
 FACTOR OF 0.999998382. THE AVERAGE CORRECTION FACTOR HAS BEEN
 DETERMINED FROM GEODESIC CONTROL MONUMENTS 2517 AND 2518.
 THIS PLAN SHOWS ONE OF MANY INTERFERED POINTS WHICH ARE NOT SET OF THE TITLE FURNISHED

MURRAY & ASSOCIATES
 PROFESSIONAL LAND SURVEYORS
 201 17448 BIRCH AVENUE
 SURREY, BC V3V 3G3
 (604) 597-9705

THIS PLAN LIES WITHIN THE METRO VANCOUVER REGIONAL DISTRICT
 (CITY OF SURREY)

THE FIELD SURVEY REPRESENTED BY THIS PLAN WAS
 COMPLETED ON THE 14th DAY OF FEBRUARY, 2019
 JOCHANDER SINGH PARR, BCLS 883
 FILE 10227-04