

CITY OF SURREY

BYLAW NO. 19574

A Bylaw to close and to remove the dedication
of a highway of portions of road
.....

WHEREAS pursuant to Subsection 40(1)(a) of the *Community Charter*, S.B.C. 2003, c. 26, the Council may, by bylaw, close all or part of a highway that is vested in the municipality to all or some types of traffic;

AND WHEREAS pursuant to Section 40(2) of the *Community Charter*, S.B.C. 2003, c. 26, the Council may, by bylaw, remove the dedication of a highway that has been closed by a bylaw under Subsection 40(1)(a).

NOW, THEREFORE the Council of the City of Surrey ENACTS as follows:

1. Those portions in District Lot 155, Group 2, New Westminster District dedicated by Plan 23453 and Plan 32421 shown outlined in heavy black line on Reference Plan EPP79087 attached hereto, prepared by Gurpreet S. Kooner, B.C.L.S. on the 11th day of July, 2017, and described as follows:

that portion of unconstructed road allowance containing 0.190 hectares and labeled as Parcel "A";

(hereinafter referred to as that portion of Road)

shall be closed to traffic.

2. The dedication as highway be removed of said portion of Road.
3. This Bylaw may be cited for all purposes as "Surrey Close and Remove the Dedication of Highway of a Portion of Road adjacent to 14563, 14571 and 14575 – 32 Avenue Bylaw, 2018, No. 19574"


PASSED FIRST READING on the 23rd day of July, 2018.

PASSED SECOND READING on the 23rd day of July, 2018.

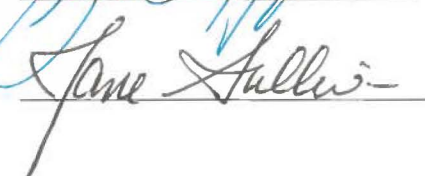
PASSED THIRD READING on the 23rd day of July, 2018.

RECEIVED APPROVAL FROM THE MINISTRY OF TRANSPORTATION AND INFRASTRUCTURE on the 7th day of August, 2018

RECONSIDERED AND FINALLY ADOPTED, signed by the Mayor and Clerk, and sealed with the Corporate Seal on the 17th day of September, 2018.



MAYOR



CLERK

REFERENCE PLAN TO ACCOMPANY CITY OF SURREY
 HIGHWAY DEDICATION CANCELLATION BYLAW NO.19574
 OF PORTIONS OF ROAD LYING IN DISTRICT LOT 155
 GROUP 2 NEW WESTMINSTER DISTRICT
 DEDICATED ON PLANS 23453 AND 32421
 PURSUANT TO SECTION 120 OF THE LAND TITLE ACT AND
 SECTION 40 OF THE COMMUNITY CHARTER.
 BCGS 92C.008

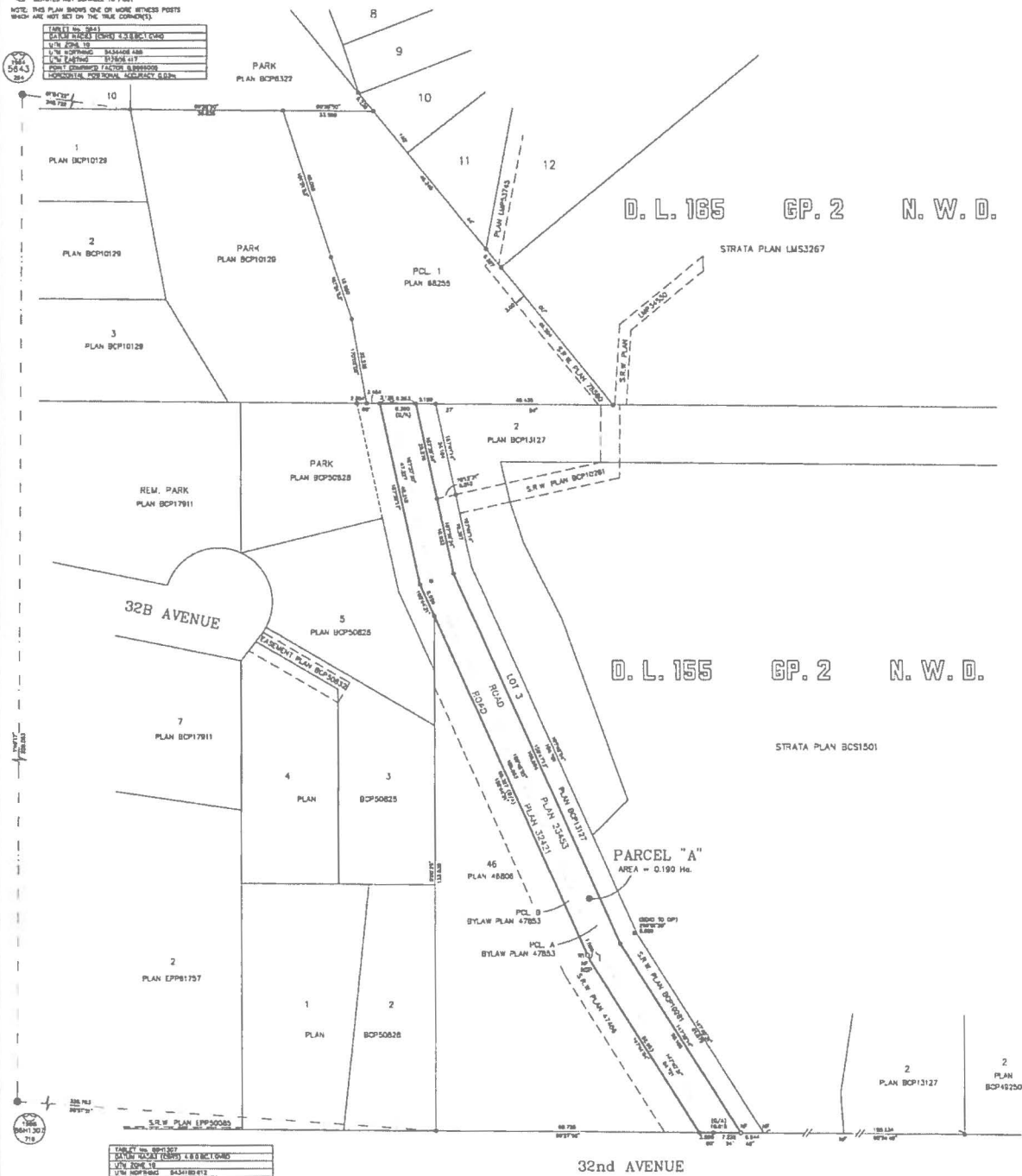
PLAN EPP79087



ALL DISTANCES ARE IN METERS
 THE REFERRED PLAN SIZE OF THIS PLAN IS
 SHOWN AS HEIGHT BY 300MM BY WIDTH
 WHEN PLOTTED AT A SCALE OF 1:300 (AND 0.325)
 INTEGRATED SURVEY DATA NO. 1, SURREY, NANB3 (CRS) IS INCORPORATED
 ALL DISTANCES ARE IN METERS
 GRID BEARINGS ARE DERIVED FROM OBSERVATIONS BETWEEN ELECTRIC CONTROL MONUMENTS 2843 AND 8811307
 THE UTM COORDINATES AND ESTIMATED HORIZONTAL POSITIONAL ACCURACY ACHIEVED ARE
 DERIVED FROM THE HARDEST PUBLISHED COORDINATES AND STANDARD DEVIATIONS FOR
 ELECTRIC CONTROL MONUMENTS 2843 AND 8811307
 THIS PLAN SHOWS HORIZONTAL, GROUND-LEVEL DISTANCES UNLESS OTHERWISE SPECIFIED
 TO COMPUTE GRID DISTANCES, HORIZONTAL DISTANCES, UNLESS OTHERWISE SPECIFIED
 CORRECTED SCALE FACTOR OF 0.999999999 HAS BEEN DERIVED FROM
 CONTROL MONUMENTS 2843 AND 8811307.

- LEGEND
- ⊙ ELECTRIC CONTROL MONUMENT FOUND
 - ⊙ ELECTRIC STANDARD BENCH POST FOUND
 - ⊙ ELECTRIC STANDARD HIGH POST SET
 - ⊙ ELECTRIC MONUMENT FOUND
 - ⊙ ELECTRIC WIPER POST
 - ⊙ ELECTRIC OVERALL
 - ⊙ ELECTRIC NOT SURTABLE TO POST
- NOTE: THIS PLAN SHOWS ONE OR MORE BENCH POSTS
 WHICH ARE NOT SET ON THE TRUE CORNERS.

DATE	1998
BY	BCP10128
FOR	PLAN EPP79087
PROJECT	32B AVENUE
CLIENT	CITY OF SURREY
DATE	1998
BY	BCP10128
FOR	PLAN EPP79087
PROJECT	32B AVENUE
CLIENT	CITY OF SURREY



DATE	1998
BY	BCP10128
FOR	PLAN EPP79087
PROJECT	32B AVENUE
CLIENT	CITY OF SURREY
DATE	1998
BY	BCP10128
FOR	PLAN EPP79087
PROJECT	32B AVENUE
CLIENT	CITY OF SURREY

CITY OF SURREY
 SURVEY SECTION
 13400 - 104 AVE.
 SURREY, B.C. V3R 3A2
 TEL: (604) 271-1523

THIS PLAN LIES WITHIN THE METRO VANCOUVER REGIONAL DISTRICT
 CITY OF SURREY

THE P.C.S. SURVEY REPRESENTED
 BY THIS PLAN WAS COMPLETED
 ON THE 27th DAY OF JUNE, 1998
 SURVEYOR'S LICENSE NO. 127

FILE: 82/304
 PLAN: 2016/26/01
 MAP: 153