

CITY OF SURREY

BYLAW NO. 19518

A Bylaw to close and to remove the dedication
of a highway of portions of road
.....

WHEREAS pursuant to Subsection 40(1)(a) of the *Community Charter*, S.B.C. 2003, c. 26, the Council may, by bylaw, close all or part of a highway that is vested in the municipality to all or some types of traffic;

AND WHEREAS pursuant to Section 40(2) of the *Community Charter*, S.B.C. 2003, c. 26, the Council may, by bylaw, remove the dedication of a highway that has been closed by a bylaw under Subsection 40(1)(a).

NOW, THEREFORE the Council of the City of Surrey ENACTS as follows:

1. Those portions of District Lot 166, Group 2, New Westminster District dedicated by Plan 1449 shown outlined in heavy black line on Reference Plan EPP83230 attached hereto, prepared by Gurpreet S. Kooner, B.C.L.S. on the 9th day of July, 2018, and described as follows:

that portion of unconstructed road allowance containing 985.9 square metres and labeled as Parcel 'A' and that portion of unconstructed road allowance containing 0.360 hectares and labeled as Parcel 'B';

(hereinafter referred to as that portion of Road)

shall be closed to traffic.

2. The dedication as highway be removed of said portions of Road.
3. This Bylaw may be cited for all purposes as "Surrey Close and Remove the Dedication of Highway of a Portion of Road adjacent to 14225, 14337, 14349, 14353 and 14367 – 33 Avenue, 14131 – 34A Avenue, 3399 – 144 Street and 14390 Crescent Road Bylaw, 2018, No. 19518"


PASSED FIRST READING on the 19th day of November, 2018.

PASSED SECOND READING on the 19th day of November, 2018.


PASSED THIRD READING on the 19th day of November, 2018.

RECEIVED APPROVAL FROM THE MINISTRY OF TRANSPORTATION AND INFRASTRUCTURE on the 22nd day of November, 2018

RECONSIDERED AND FINALLY ADOPTED, signed by the Mayor and Clerk, and sealed with the Corporate Seal on the 3rd day of December, 2018.



MAYOR

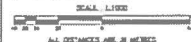


CLERK

REFERENCE PLAN TO ACCOMPANY
BY-LAW NO.1951B TO CLOSE PARTS
OF ROADS DEDICATED ON PLAN 1449,
DISTRICT LOT 166, GROUP 2,
NEW WESTMINSTER DISTRICT
PURSUANT TO SECTION 120 OF THE LAND TITLE ACT
AND SECTION 40 OF THE COMMUNITY CHARTER
B.C.G.S. §22.006

LEGEND

- Ø DENOTES CENTER POINT
- DENOTES STANDARD HIGH POINT FOUND
- DENOTES STANDARD LEAD HIGH POINT SET
- DENOTES NON-STANDARD HIGH POINT FOUND (ON CHAIN)
- DENOTES NON-STANDARD HIGH POINT FOUND (ON CHAIN)
- DENOTES HIGH POINT FOUND
- DENOTES UNIDENTIFIED POINT FOUND
- DENOTES CHAIN



ALL DISTANCES ARE IN METERS
THE INTENDED POINT SIZE OF THIS PLAN IS 600µm
IN WIDTH BY 800µm IN HEIGHT (300 µm WIDTH)
WITH PLOTTED AT A SCALE OF 1:1000

INTEGRATED SURVEY AREA NO. 1 SURVEY, MANDS (1995) 4.0.0.0.01.0000

GRID REVISIONS ARE DERIVED FROM OBSERVATIONS BETWEEN
ZONING CONTROL MONUMENTS EACH AND SAME
THE UTM COORDINATES AND ESTIMATED HORIZONTAL POSITIONAL ACCURACY AGREEMENTS ARE DERIVED FROM HARVEST
PURCHASED COORDINATES AND STANDARD DEVIATIONS FOR ZONING CONTROL MONUMENTS 5432 AND 5643
THIS PLAN SHOWS HORIZONTAL GROUND-LEVEL DISTANCES UNLESS
OTHERWISE SPECIFIED. TO COMPUTE GRID DISTANCES, MULTIPLY GROUND-LEVEL
DISTANCES BY THE AVERAGE CORRECTION FACTOR OF 0.99998, WHICH HAS
BEEN DERIVED FROM ZONING CONTROL MONUMENTS 5432 AND 5643
NOTE: THIS PLAN SHOWS ONE OF MANY METERS POINTS WHICH ARE NOT SET ON THE TRAIL CORNER

BOUNDARY SURVEY

PARCEL NO.	953 B.M.
PLANNING NO.	8-200
PLAN, 1449-19-B, 1449-20-B, 1449-21-B	

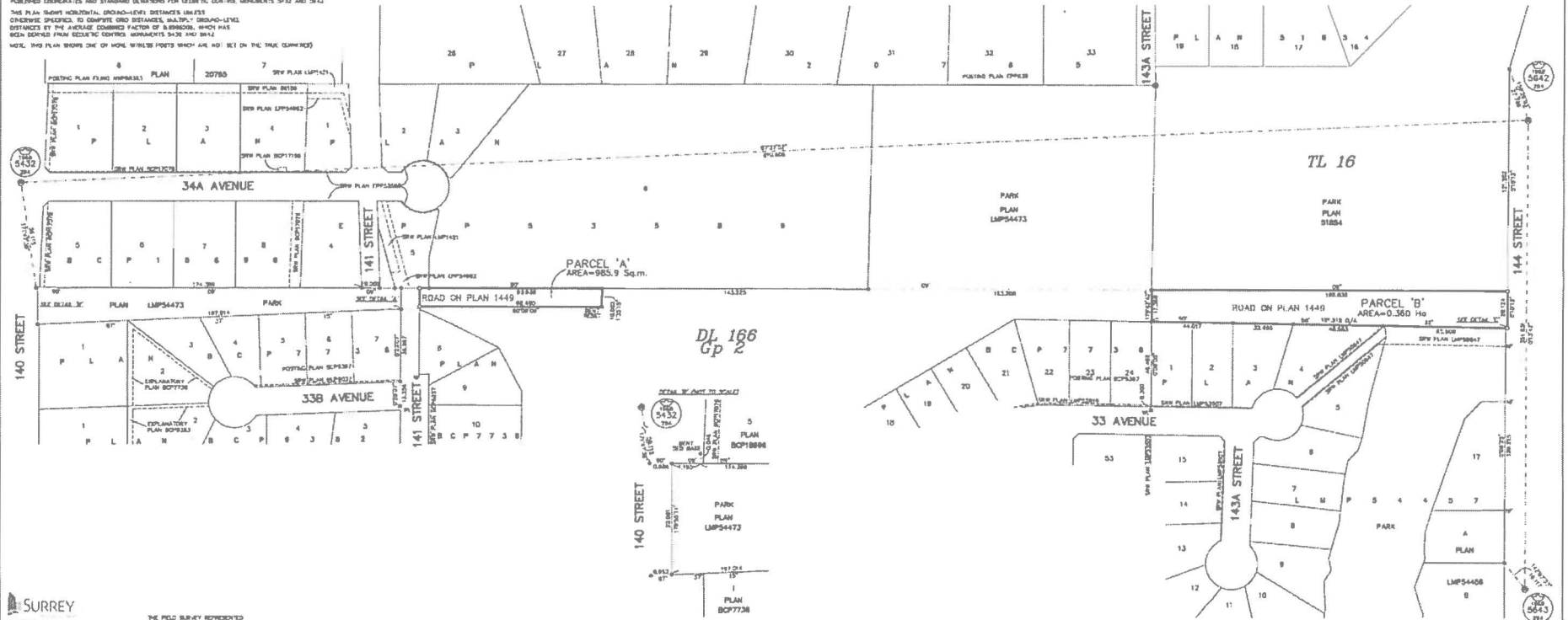
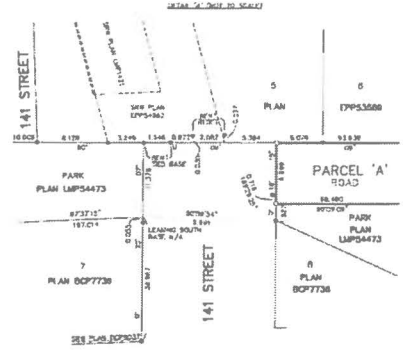
TABLE NO. 243	STATION POINT (ELEVATION) & DESCRIPTION
1	W.M. 1449-19-B
2	W.M. 1449-20-B
3	W.M. 1449-21-B
4	W.M. 1449-19-B
5	W.M. 1449-20-B
6	W.M. 1449-21-B
7	W.M. 1449-19-B
8	W.M. 1449-20-B
9	W.M. 1449-21-B
10	W.M. 1449-19-B
11	W.M. 1449-20-B
12	W.M. 1449-21-B

BOUNDARY SURVEY

TABLE NO. 244	STATION POINT (ELEVATION) & DESCRIPTION
1	W.M. 1449-19-B
2	W.M. 1449-20-B
3	W.M. 1449-21-B
4	W.M. 1449-19-B
5	W.M. 1449-20-B
6	W.M. 1449-21-B
7	W.M. 1449-19-B
8	W.M. 1449-20-B
9	W.M. 1449-21-B
10	W.M. 1449-19-B
11	W.M. 1449-20-B
12	W.M. 1449-21-B

BOUNDARY SURVEY

TABLE NO. 245	STATION POINT (ELEVATION) & DESCRIPTION
1	W.M. 1449-19-B
2	W.M. 1449-20-B
3	W.M. 1449-21-B
4	W.M. 1449-19-B
5	W.M. 1449-20-B
6	W.M. 1449-21-B
7	W.M. 1449-19-B
8	W.M. 1449-20-B
9	W.M. 1449-21-B
10	W.M. 1449-19-B
11	W.M. 1449-20-B
12	W.M. 1449-21-B



SURREY
CITY OF SURREY
PLANNING DEPARTMENT
3400 - 104 AVE.
SURREY, B.C. V3T 1V6
TEL: (604) 261-4253

THE FIELD SURVEY REVISIONS
BY THIS PLAN WAS ESTABLISHED
ON THE 14th DAY OF JULY, 2024
SURREY & ADJACENT, 8028 (837)

THIS PLAN LIES WITHIN THE METRO
VANCOUVER REGIONAL DISTRICT

FILE: 837386
PLAN: 2024-07-17
MAP: 1-2