

CITY OF SURREY

BYLAW NO. 19512

A Bylaw to close and to remove the dedication  
of a highway of portions of road  
.....

WHEREAS pursuant to Subsection 40(1)(a) of the *Community Charter*, S.B.C. 2003, c. 26, the Council may, by bylaw, close all or part of a highway that is vested in the municipality to all or some types of traffic;

AND WHEREAS pursuant to Section 40(2) of the *Community Charter*, S.B.C. 2003, c. 26, the Council may, by bylaw, remove the dedication of a highway that has been closed by a bylaw under Subsection 40(1)(a).

NOW, THEREFORE the Council of the City of Surrey ENACTS as follows:

1. That portion of Section 24 Township 1 New Westminster District dedicated by Plans 52132 and 17817 shown outlined in heavy black line on Reference Plan EPP80276 attached hereto, prepared by Harinder S. Badial, B.C.L.S. on the 22nd day of February, 2018, and described as follows:

that portion of unconstructed road allowance containing 1,316.20 square metres and labeled as Parcel 'A';

(hereinafter referred to as that portion of Road)

shall be closed to traffic.

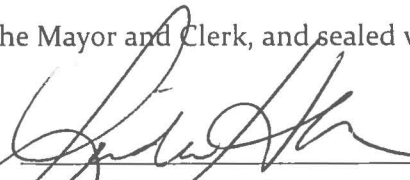
2. The dedication as highway be removed of said portion of Road.
3. This Bylaw may be cited for all purposes as "Surrey Close and Remove the Dedication of Highway of a Portion of Road adjacent to 16685 and 16715 - 24 Avenue and 2462 and 2474 - 167 Street Bylaw, 2018, No. 19512"

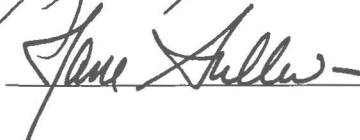
PASSED FIRST READING on the 7th day of May, 2018.

PASSED SECOND READING on the 7th day of May, 2018.

PASSED THIRD READING on the 7th day of May, 2018.

RECONSIDERED AND FINALLY ADOPTED, signed by the Mayor and Clerk, and sealed with the Corporate Seal on the 28th day of May, 2018.

  
\_\_\_\_\_  
MAYOR

  
\_\_\_\_\_  
CLERK

REFERENCE PLAN TO ACCOMPANY CITY OF SURREY HIGHWAY DEDICATION  
 CANCELLATION BYLAW NUMBER 19512 OF PORTIONS OF ROAD  
 LYING IN SECTION 24 TOWNSHIP 1 NEW WESTMINSTER DISTRICT

BCGS 926.007

PURSUANT TO SECTION 120, LAND TITLE ACT  
 PURSUANT TO SECTION 40, COMMUNITY CHARTER

LEGEND

- (S) REMOTE CONTROL MONUMENT FOUND
- (M) CORNER STAKE/IRON POST FOUND
- (O) CORNER STAKE/IRON POST SET



THE AUTHOR'S PLAN SIZE OF THIS PLAN IS 604 mm in WIDTH  
 BY 840 mm in HEIGHT (D. SCALE) WHEN PLOTTED AT A  
 SCALE OF 1:750

INTEGRATED SURVEY AREA NO. 1 SURREY, NAD83(CRS)11 ADJUSTED

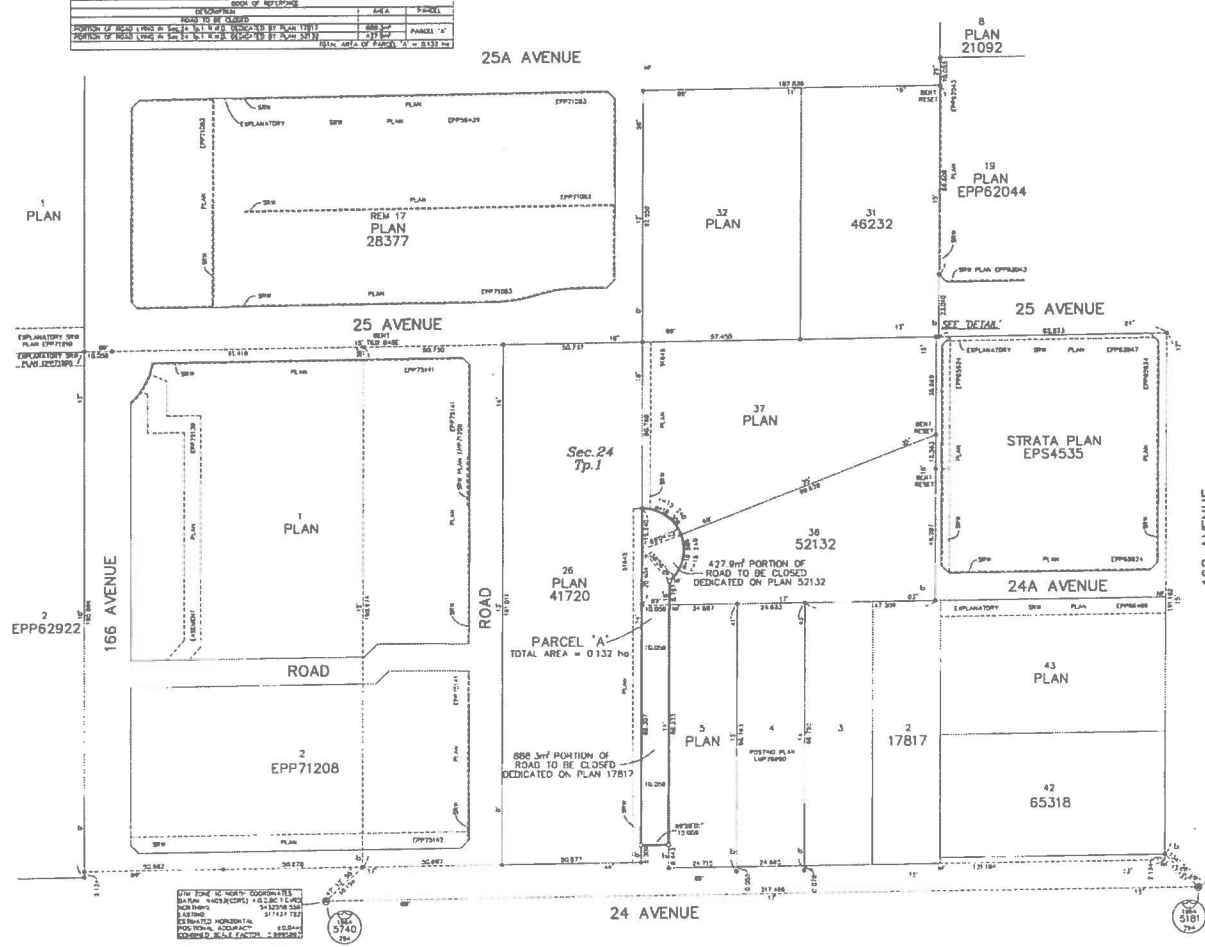
GRID BEARINGS ARE DERIVED FROM CONVENTIONAL OBSERVATIONS  
 BETWEEN GEODETIC CONTROL MONUMENTS 5181 AND 5146.

THE UTM COORDINATES AND ESTIMATED HORIZONTAL POSITIONAL ACCURACY  
 ADJUSTED HAS BEEN DERIVED FROM CONVENTIONAL TIES TO  
 GEODETIC CONTROL MONUMENTS 5181 AND 5146.

THIS PLAN SHOWS HORIZONTAL, GROUND-LEVEL DISTANCES UNLESS OTHERWISE  
 SPECIFIED. TO COMPUTE GROUND DISTANCES, MULTIPLY GROUND-LEVEL DISTANCES  
 BY THE AVERAGE CORRECTION FACTOR OF 0.999998, WHICH HAS BEEN DERIVED  
 FROM GEODETIC CONTROL MONUMENTS 5181 AND 5146.



DESCRIPTION	AREA	UNITS
ROAD TO BE DEDICATED	0.132	ha
PORTION OF ROAD (1760 m x 5.0 m) IN PLAN 17613	0.004	ha
PORTION OF ROAD (1760 m x 5.0 m) IN PLAN 17613	0.004	ha
TOTAL	0.132	ha



THIS PLAN IS NORTH COORDINATES  
 DATUM: NAD83(CRS)11  
 ELEVATION: 150.000 m  
 ESTIMATED HORIZONTAL POSITIONAL ACCURACY: ±0.050 m  
 CORRECTION FACTOR: 0.999998

THIS PLAN LIES WITHIN THE MTRD  
 YANCOUVER REGIONAL DISTRICT

THE FIELD SURVEY REPRESENTED BY THIS PLAN WAS COMPLETED  
 ON THE 15TH DAY OF FEBRUARY 2018  
 NUMBER 5 BURNHAM, WELLS RD

D.T. OF SURREY  
 SURVEY MENTION  
 15880 - 100 - 04  
 NUMBER: S.C. 151 148  
 TEL: (604) 261-4224