

CITY OF SURREY

BYLAW NO. 19502

A Bylaw to close and to remove the dedication  
of a highway of portions of lane  
.....

WHEREAS pursuant to Subsection 40(1)(a) of the *Community Charter*, S.B.C. 2003, c. 26, the Council may, by bylaw, close all or part of a highway that is vested in the municipality to all or some types of traffic;

AND WHEREAS pursuant to Section 40(2) of the *Community Charter*, S.B.C. 2003, c. 26, the Council may, by bylaw, remove the dedication of a highway that has been closed by a bylaw under Subsection 40(1)(a).

NOW, THEREFORE the Council of the City of Surrey ENACTS as follows:

1. That portion of Section 23 Township 1 New Westminster District dedicated by Plan EPP 66060 shown outlined in heavy black line on Reference Plan EPP73484 attached hereto, prepared by M. Adam Fulkerson, B.C.L.S. on the 12th day of June, 2017, and described as follows:

that portion of lane containing 58.6 square metres and labeled as "A";

(hereinafter referred to as that portion of Lane)

shall be closed to traffic.

2. The dedication as highway be removed of said portion of Lane.
3. This Bylaw may be cited for all purposes as "Surrey Close and Remove the Dedication of Highway of a Portion of Road adjacent to 15633 Mountain View Drive Bylaw, 2018, No. 19502"

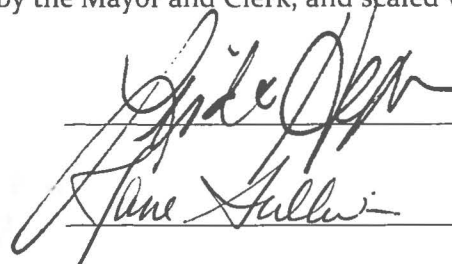
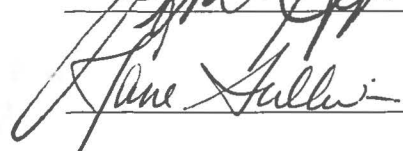
PASSED FIRST READING on the 12th day of March, 2018.

PASSED SECOND READING on the 12th day of March, 2018.

PASSED THIRD READING on the 12th day of March, 2018.

RECEIVED APPROVAL FROM THE MINISTRY OF TRANSPORTATION AND INFRASTRUCTURE  
on the 22nd day of March, 2018

RECONSIDERED AND FINALLY ADOPTED, signed by the Mayor and Clerk, and sealed with the  
Corporate Seal on the 9th day of April, 2018.

 MAYOR  
 CLERK

**REFERENCE PLAN TO ACCOMPANY CITY OF SURREY  
HIGHWAY DEDICATION CANCELLATION BYLAW No. 19502, 2018  
STOPPING UP AND CLOSING PART OF ROAD DEDICATED ON  
PLAN EPP6060 SEC 23 TP 1 NWD**

**PLAN EPP73484**

B.C.G.S. 926.007  
PURSUANT TO SECTION 120, LAND TITLE ACT  
PURSUANT TO SECTION 40, COMMUNITY CHARTER

**LEGEND**

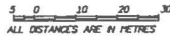
- ⊕ DENOTES CONTROL MONUMENT FOUND
- DENOTES STANDARD IRON POST FOUND
- DENOTES STANDARD IRON POST SET
- h DENOTES HECTARES
- W DENOTES WITNESS

Coordinates shown are for mapping purposes only.

Note:  
This plan shows one or more witness points which are NOT set on the true corner(s).



SCALE 1 : 750



ALL DISTANCES ARE IN METRES

The intended plot size of this plan is 560mm in width and 432mm in height (C size) when plotted at a scale of 1:750.

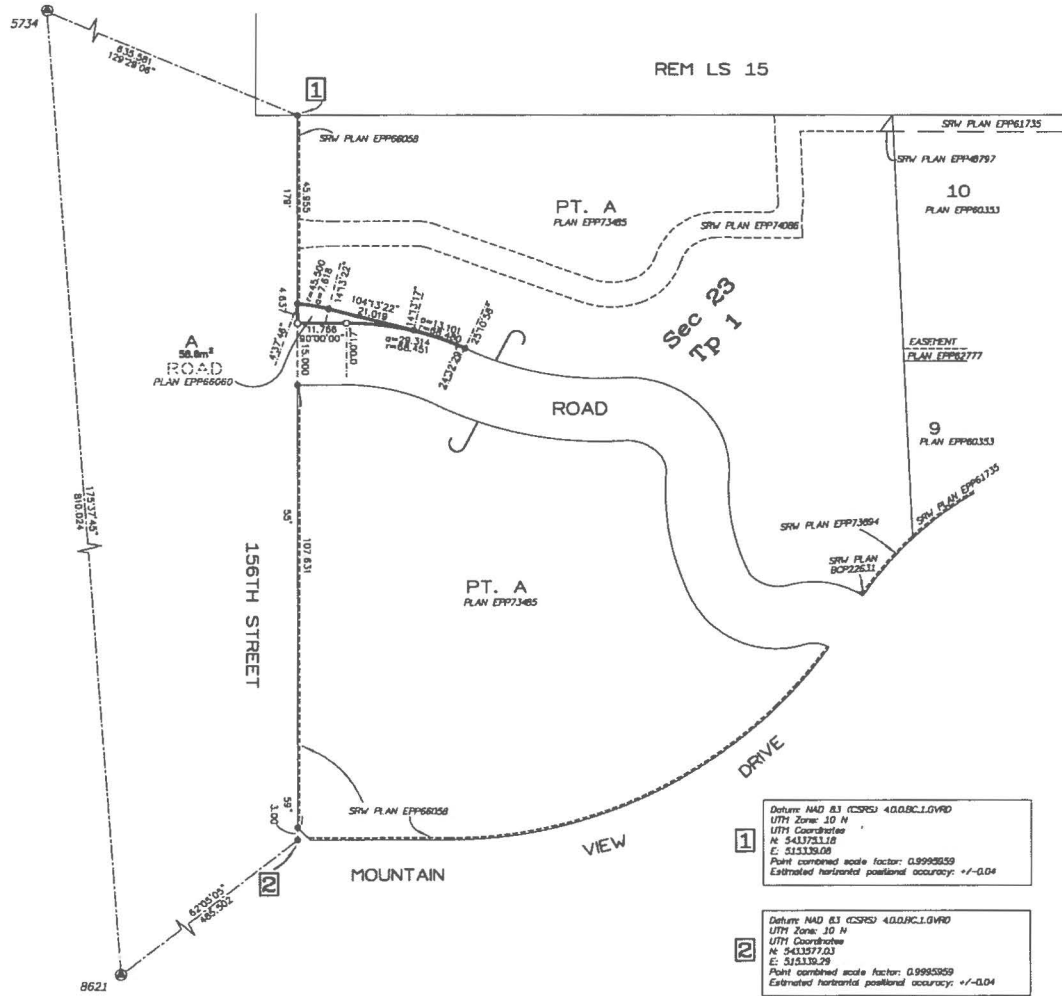
**INTEGRATED SURVEY AREA No. 1, SURREY**

HAD 83 (CSRS) 40.0.BC.L04V0  
Grid bearings are derived from RTK dual frequency GNSS observations to geospatial control monuments 8621 and 5734 and are referred to the central meridian of UTM Zone 10 N. The UTM coordinates and estimated horizontal positional accuracy achieved are derived from GeosBC Network Published Information. This plan shows horizontal ground-level distances unless otherwise specified. To compute grid distances, multiply ground-level distances by the average combined factor of 0.9999959, which has been derived from control monument 8621.

Re-inspected under the Land Title Act, the 5th day of February, 2018.  
P: Adam Fullerton, BCL5 906

This plan lies within the jurisdiction of the Approving Officer for the City of Surrey.

The field survey represented by this plan was completed on the 12th day of June, 2017.  
P: Adam Fullerton, BCL5 906



1 Datum HAD 83 (CSRS) 40.0.BC.L04V0  
UTM Zone: 10 N  
UTM Coordinates  
N: 5433733.18  
E: 513339.08  
Point combined scale factor: 0.9999959  
Estimated horizontal positional accuracy: +/-0.04

2 Datum HAD 83 (CSRS) 40.0.BC.L04V0  
UTM Zone: 10 N  
UTM Coordinates  
N: 5433717.03  
E: 513339.29  
Point combined scale factor: 0.9999959  
Estimated horizontal positional accuracy: +/-0.04

THIS PLAN LIES WITHIN THE METRO VANCOUVER REGIONAL DISTRICT



FILE: 745-RE