

CITY OF SURREY

BYLAW NO. 19302

A Bylaw to close and to remove the dedication
of a highway of portions of road
.....

WHEREAS pursuant to Subsection 40(1)(a) of the *Community Charter*, S.B.C. 2003, c. 26, the Council may, by bylaw, close all or part of a highway that is vested in the municipality to all or some types of traffic;

AND WHEREAS pursuant to Section 40(2) of the *Community Charter*, S.B.C. 2003, c. 26, the Council may, by bylaw, remove the dedication of a highway that has been closed by a bylaw under Subsection 40(1)(a).

NOW, THEREFORE the Council of the City of Surrey ENACTS as follows:

1. That portion of Section 32, Block 5 North, Range 2 West, New Westminster District dedicated by Explanatory Plan 14629 shown outlined in heavy black line on a Reference Plan EPP 71226 attached hereto, prepared by Eugene Wong, B.C.L.S. on the 8th day of March, 2017, and described as follows:

that portion of road containing 494.2 square metres and labeled Parcel A;

(hereinafter referred to as that portion of Road)

shall be closed to traffic.

2. The dedication as highway be removed of said portion of Road.
3. This Bylaw may be cited for all purposes as "Surrey Close and Remove the Dedication of Highway of a Portion of Road Adjacent to 12642 and 12658 - 100 Avenue Bylaw, 2017, No. 19302".

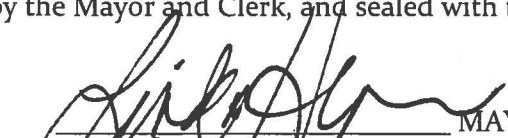
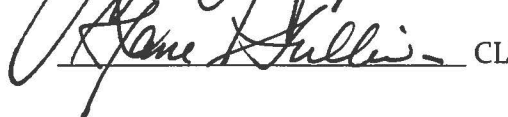
PASSED FIRST READING on the 24th day of July, 2017.

PASSED SECOND READING on the 24th day of July, 2017.

PASSED THIRD READING on the 24th day of July, 2017.

RECONSIDERED AND FINALLY ADOPTED, signed by the Mayor and Clerk, and sealed with the Corporate Seal on the 11th day of September, 2017.




MAYOR

CLERK

REFERENCE PLAN TO ACCOMPANY CITY OF SURREY
 ROAD DEDICATION CANCELLATION BYLAW NO. 19302
 OF A PORTION OF ROAD DEDICATED ON EXPLANATORY PLAN 14629
 SECTION 32 BLOCK 5 NORTH RANGE 2 WEST
 NEW WESTMINSTER DISTRICT

PLAN EPP71226

PURSUANT TO SECTION 120, LAND TITLE ACT
 AND SECTION 40 OF THE COMMUNITY CHARTER

BCOS 92G.018

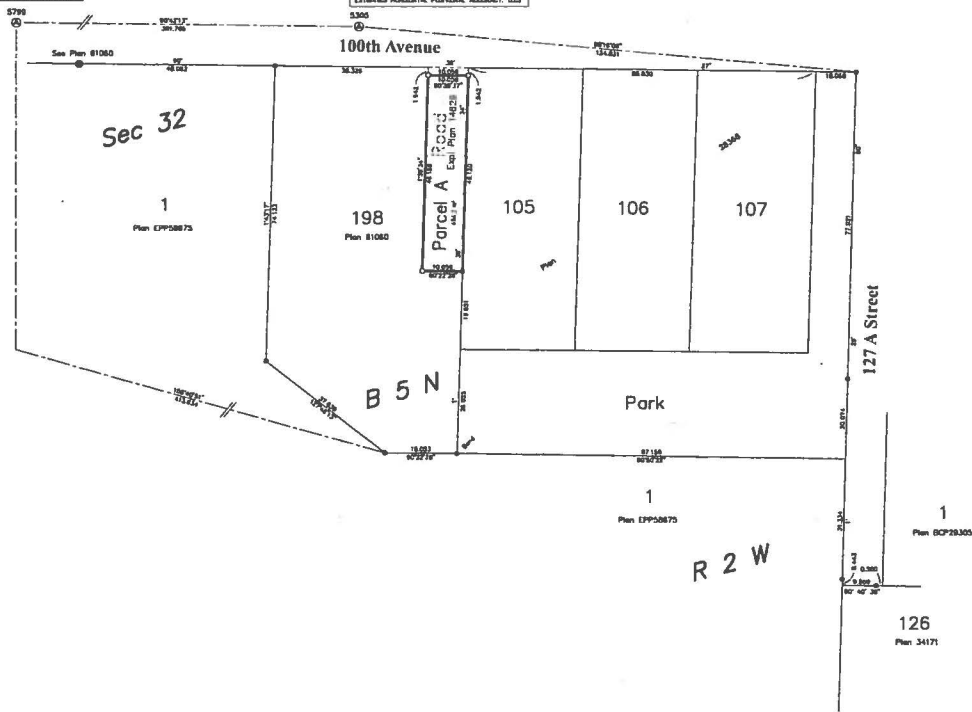
LEGEND
 SCALE 1:500

- 0 10 20
 ALL DIMENSIONS ARE IN METERS
 THE REFERRED PLAN SIZE OF THIS PLAN
 IS SHOWN IN RED BY DIMENSION IN METERS (D SIZE)
 WHEN PLOTTED AT A SCALE OF 1:500
 AUTOMATED SURVEY AREA NO.1, SURREY, B.C.
 MODEL (CSM) 4.0.0 (S.1.0/0.0)
 THIS SURVEY WAS DERIVED FROM MEASUREMENTS BETWEEN
 LEGAL CONTROL MONUMENTS 4385 AND 4788
 THE UTM COORDINATES AND ESTIMATED HORIZONTAL PERSONAL
 ACCURACY ADHERED ARE DERIVED FROM HIGHEST PUBLISHED
 COORDINATES AND STANDARD DEVIATIONS FOR LEGAL CONTROL
 MONUMENTS 4385 AND 4788
 THIS PLAN SHOWS HORIZONTAL GROUND-LEVEL
 DISTANCES UNLESS OTHERWISE SPECIFIED
 TO COMPUTE GRID DISTANCES
 HORIZONTAL GROUND-LEVEL DISTANCES BY THE
 ADJACENT CORNER FACTOR DIMENSIONS WHICH
 HAVE BEEN DERIVED FROM LEGAL CONTROL MONUMENTS
 4385 AND 4788
 (C) INDICATES CONTROL MONUMENT FOUND
 (M) INDICATES NON-STANDARD POINT FOUND
 (R) INDICATES BENCHMARK FROM POINT FOUND
 (O) INDICATES BENCHMARK FROM POINT PLACED
 (P) INDICATES BENCHMARK POINT PLACED
 (N) INDICATES SQUARE METERS



UTM ZONE 18 COORDINATES
 DATUM: NAD83(CSRS) 4.0.0 (S.1.0/0.0)
 UTM NORTHING: 5447574.00
 UTM EASTING: 806235.10
 POINT CORNER FACTOR: 0.0000033
 ESTIMATED HORIZONTAL PERSONAL ACCURACY: 0.03

UTM ZONE 18 COORDINATES
 DATUM: NAD83(CSRS) 4.0.0 (S.1.0/0.0)
 UTM NORTHING: 5447574.75
 UTM EASTING: 806235.80
 POINT CORNER FACTOR: 0.0000032
 ESTIMATED HORIZONTAL PERSONAL ACCURACY: 0.03



MLY AND ASSOCIATES
 LAND SURVEYING LTD.
 226, 1100 - 110th STREET
 SURREY, B.C. V3R 4P7
 TEL: (604)251-1111
 FAX: (604)251-0800

THIS PLAN LIES WITHIN THE GREATER WOODBINE
 REGIONAL DISTRICT - CITY OF SURREY
 THE FIELD SURVEY REPRESENTED BY THIS PLAN
 WAS COMPLETED ON THE 28th DAY OF MARCH, 2017
 CLASSIC SURV. 5023 113