

CITY OF SURREY

BYLAW NO. 19191

A Bylaw to close and to remove the dedication
of a highway of portions of road
.....

WHEREAS pursuant to Subsection 40(1)(a) of the *Community Charter*, S.B.C. 2003, c. 26, the Council may, by bylaw, close all or part of a highway that is vested in the municipality to all or some types of traffic;

AND WHEREAS pursuant to Section 40(2) of the *Community Charter*, S.B.C. 2003, c. 26, the Council may, by bylaw, remove the dedication of a highway that has been closed by a bylaw under Subsection 40(1)(a).

NOW, THEREFORE the Council of the City of Surrey ENACTS as follows:

1. Those portions of Section 9 Block 5 North Range 2 West New Westminster District dedicated by Plan 480 shown outlined in heavy black line on a Reference Plan EPP40959 attached hereto, prepared by Jeffrey D. Thompson, B.C.L.S. on the 23rd day of March, 2017, and described as follows:
 - a. that portion of road containing 1550 square meters and labeled Parcel A; and
 - b. that portion of road containing 808.3 square meters and labeled Parcel B.

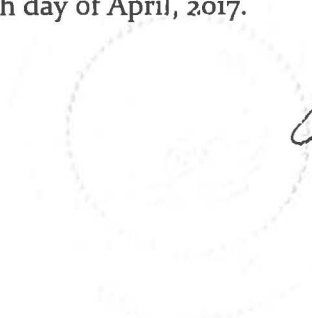
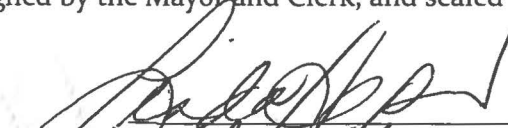
(hereinafter referred to as that portion of Road)shall be closed to traffic.
2. The dedication as highway be removed of said portion of Road.
3. This Bylaw may be cited for all purposes as "Surrey Close and Remove the Dedication of Highway of a Portion of Road Adjacent to 12851 Bridgeview Drive, 12881 – 113B Avenue and 12848, 12851, 12861 and 12869 – 114 Avenue Bylaw, 2017, No. 19191".

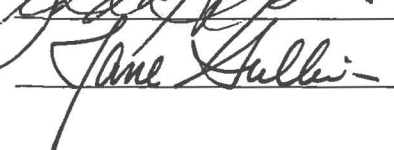
PASSED FIRST READING on the 3rd day of April, 2017.

PASSED SECOND READING on the 3rd day of April, 2017.

PASSED THIRD READING on the 3rd day of April, 2017.

RECONSIDERED AND FINALLY ADOPTED, signed by the Mayor and Clerk, and sealed with the Corporate Seal on the 24th day of April, 2017.

MAYOR


CLERK

**REFERENCE PLAN OF PARTS OF ROAD IN SECTION 9, BLOCK 5 NORTH,
RANGE 2 WEST, NEW WESTMINSTER DISTRICT, DEDICATED ON PLAN 480
TO ACCOMPANY CITY OF SURREY BYLAW NO. 19191**

PLAN EPP40959

Pursuant to Section 40 of the Community Charter and Section 120 of the Land Title Act
BCGS 92G.026



The intended plot size of this plan is 432mm in width by 560mm in height (C size) when plotted at a scale of 1:750.

All distances are in metres and decimals thereof.
Integrated Survey Area No 1, City of Surrey,
NAD83 (CSRS) 4 0 0 BC 1.GVRD.

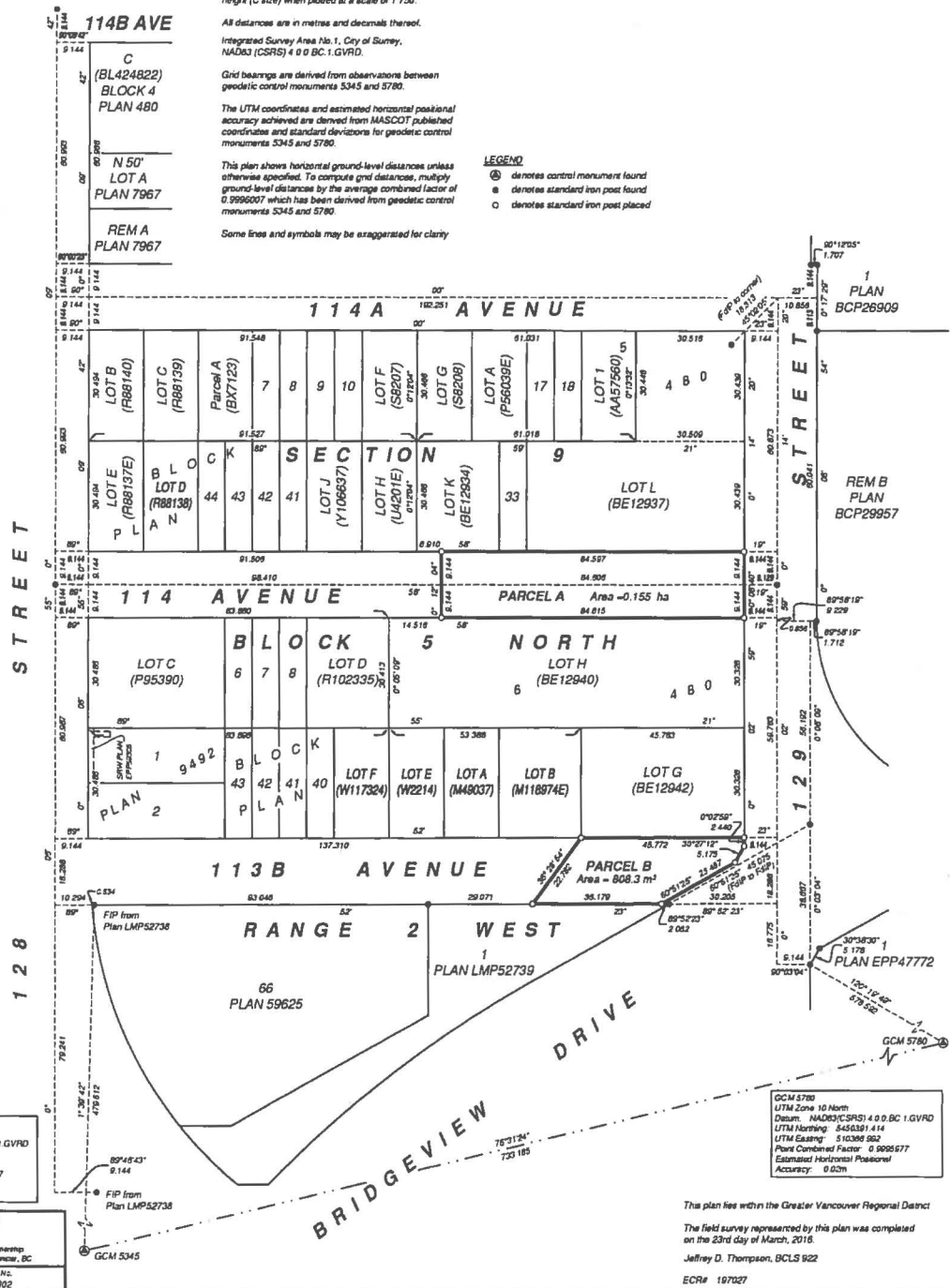
Grid bearings are derived from observations between geodetic control monuments 5345 and 5780.
The UTM coordinates and estimated horizontal positional accuracy achieved are derived from MASCOOT published coordinates and standard deviations for geodetic control monuments 5345 and 5780.

This plan shows horizontal ground-level distances unless otherwise specified. To compute grid distances, multiply ground-level distances by the average combined factor of 0.9996007 which has been derived from geodetic control monuments 5345 and 5780.

Some lines and symbols may be exaggerated for clarity.

LEGEND

- ⊙ denotes control monument found
- ⊙ denotes standard iron post found
- denotes standard iron post placed



GCM 5345
UTM Zone 10 North
Datum: NAD83(CSRS) 4 0 0 BC 1.GVRD
UTM Northing: 8456230.914
UTM Easting: 520554.280
Point Combined Factor: 0.9999037
Estimated Horizontal Positional Accuracy: 0.03m

WSP
WSP Survey (BC) Limited Partnership
300-68 Richmond St. New Westminster, BC
PROJECT REF. DRAWING NO.
010055996-ENSL01-102

GCM 5780
UTM Zone 10 North
Datum: NAD83(CSRS) 4 0 0 BC 1.GVRD
UTM Northing: 8456391.414
UTM Easting: 516398.992
Point Combined Factor: 0.999577
Estimated Horizontal Positional Accuracy: 0.02m

This plan lies within the Greater Vancouver Regional District.
The field survey represented by this plan was completed on the 23rd day of March, 2018.
Jeffrey D. Thompson, BCLS 922
ECR# 197027