

CITY OF SURREY

BYLAW NO. 19160

A Bylaw to close and to remove the dedication  
of a highway of portions of road  
.....

WHEREAS pursuant to Subsection 40(1)(a) of the *Community Charter*, S.B.C. 2003, c. 26, the Council may, by bylaw, close all or part of a highway that is vested in the municipality to all or some types of traffic;

AND WHEREAS pursuant to Section 40(2) of the *Community Charter*, S.B.C. 2003, c. 26, the Council may, by bylaw, remove the dedication of a highway that has been closed by a bylaw under Subsection 40(1)(a).

NOW, THEREFORE the Council of the City of Surrey ENACTS as follows:

1. That portion of South West Quarter Section 8 Township 8 New Westminster District dedicated by Plan 2107 shown outlined in heavy black line on a Reference Plan EPP 70287 attached hereto, prepared by Montgomery C. Brisson, B.C.L.S. on the 18th day of May, 2017, and described as follows:

that portion of road containing 116.8 square metres and labeled Parcel 'A';

(hereinafter referred to as that portion of Road)

shall be closed to traffic.

2. The dedication as highway be removed of said portion of Road.
3. This Bylaw may be cited for all purposes as "Surrey Close and Remove the Dedication of Highway of a Portion of Road Adjacent to 17710 - 56A Avenue and 17735 - 56 Avenue Bylaw, 2017, No. 19160".

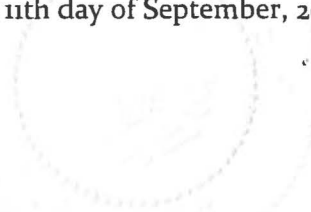
PASSED FIRST READING on the 12th day of June, 2017.

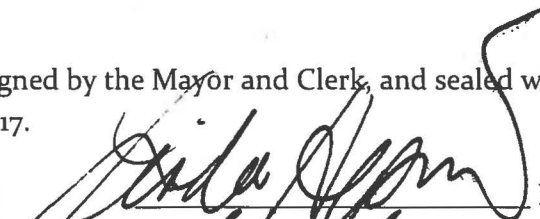
PASSED SECOND READING on the 12th day of June, 2017.

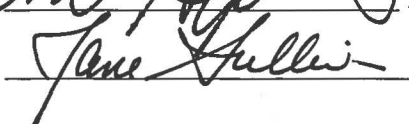
PASSED THIRD READING on the 12th day of June, 2017.

RECEIVED APPROVAL FROM THE MINISTRY OF TRANSPORTATION AND INFRASTRUCTURE on the 17th day of July, 2017

RECONSIDERED AND FINALLY ADOPTED, signed by the Mayor and Clerk, and sealed with the Corporate Seal on the 11th day of September, 2017.



  
\_\_\_\_\_  
MAYOR

  
\_\_\_\_\_  
CLERK

**REFERENCE PLAN TO ACCOMPANY CITY OF SURREY HIGHWAY DEDICATION CANCELLATION  
 BYLAW NUMBER 19160 OF A PORTION OF ROAD LYING IN SOUTH WEST QUARTER  
 SECTION 8 TOWNSHIP 8 NEW WESTMINSTER DISTRICT DEDICATED BY PLAN 2107**

**PLAN EPP70287**

**BCGS 92G.017**

PURSUANT TO SECTION 120, LAND TITLE ACT

PURSUANT TO SECTION 40, COMMUNITY CHARTER

INTEGRATED SURVEY AREA NO. 1, SURREY, NAD83 (CSRS) 4.0,0,BC,1,GVRD

GRID BEARINGS ARE DERIVED FROM OBSERVATIONS BETWEEN GEODETIC CONTROL MONUMENTS 5184 AND 5827 AND ARE REFERRED TO THE CENTRAL MERIDIAN OF UTM ZONE 10.

THE UTM COORDINATES AND ESTIMATED HORIZONTAL POSITIONAL ACCURACY ACHIEVED ARE DERIVED FROM CONVENTIONAL OBSERVATIONS TO GEODETIC CONTROL MONUMENTS 5184 AND 5827.

THIS PLAN SHOWS HORIZONTAL GROUND-LEVEL DISTANCES UNLESS OTHERWISE SPECIFIED. TO COMPUTE GRID DISTANCES, MULTIPLY GROUND-LEVEL DISTANCES BY THE AVERAGE CORRECTION FACTOR OF 0.9999070 WHICH HAS BEEN DERIVED FROM GEODETIC CONTROL MONUMENT 5184.

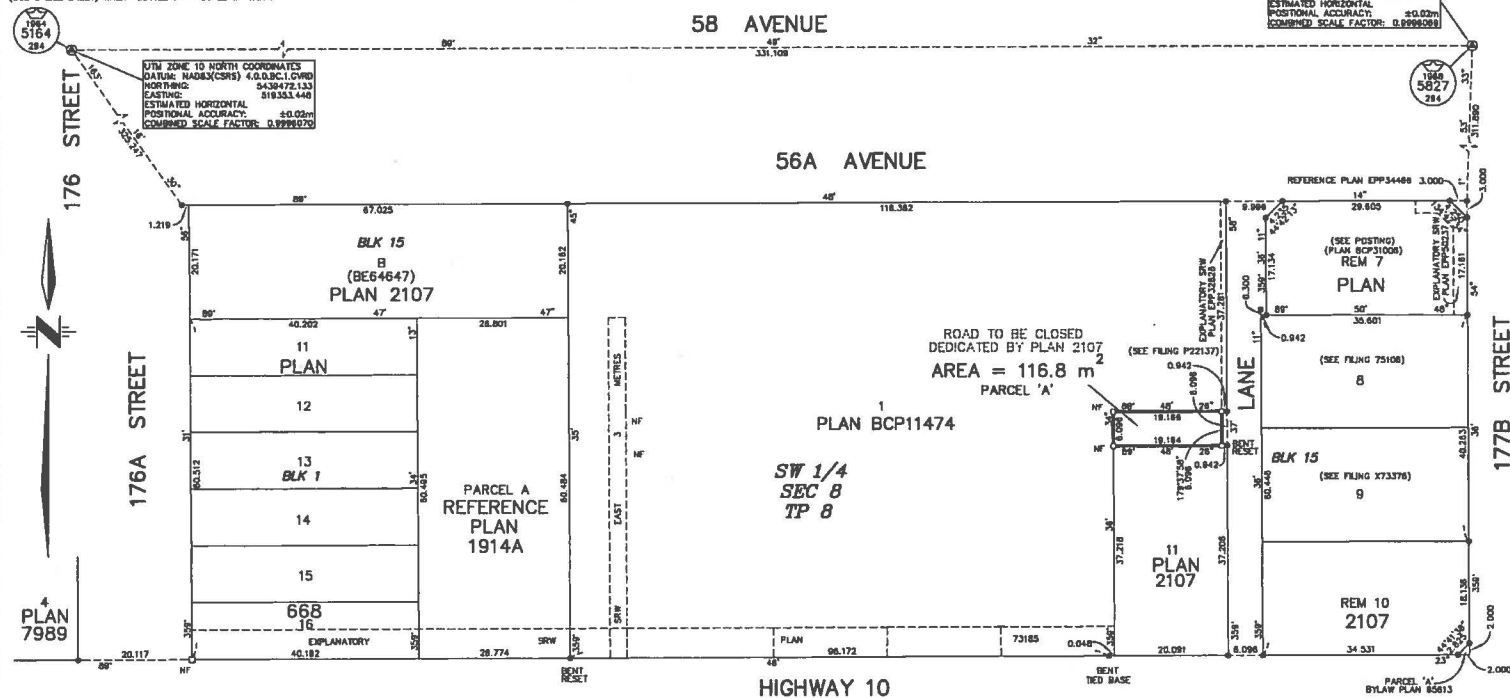
**LEGEND**

- ⊙ DENOTES CONTROL MONUMENT FOUND
- ⊙ DENOTES STANDARD IRON POST FOUND
- DENOTES STANDARD IRON POST SET
- DENOTES LEAD PLUG SET
- DENOTES NO EVIDENCE FOUND



ALL DISTANCES ARE IN METRES  
 THE INTENDED PLOT SIZE OF THIS PLAN IS  
 360mm IN WIDTH BY 432mm IN HEIGHT

(USE C SIZE SHEET) WHEN PLOTTED AT A SCALE OF 1:500



CITY OF SURREY  
 SURVEY SECTION  
 13430 - 104 AVE.  
 SURREY, B.C. V3T 1V8  
 TEL. (604) 591-4253  
 FAX. (604) 591-6683

**THIS PLAN LIES WITHIN THE GREATER  
 VANCOUVER REGIONAL DISTRICT**  
 THE FIELD SURVEY REPRESENTED BY THIS PLAN WAS COMPLETED ON  
 THE 3RD DAY OF MAY, 2017.  
 MONTGOMERY C. BRISSON, BOLS 774  
 52835C.DWG