

CITY OF SURREY

BYLAW NO. 19136

A Bylaw to close and to remove the dedication
of a highway of portions of road
.....

WHEREAS pursuant to Subsection 40(1)(a) of the *Community Charter*, S.B.C. 2003, c. 26, the Council may, by bylaw, close all or part of a highway that is vested in the municipality to all or some types of traffic;

AND WHEREAS pursuant to Section 40(2) of the *Community Charter*, S.B.C. 2003, c. 26, the Council may, by bylaw, remove the dedication of a highway that has been closed by a bylaw under Subsection 40(1)(a).

NOW, THEREFORE the Council of the City of Surrey ENACTS as follows:

1. That portion of Section 15 Block 5 North Range 2 West New Westminster District dedicated by Plan 4172 shown outlined in heavy black line on a Reference Plan EPP65732 attached hereto, prepared by Lakhjot S. Grewal, B.C.L.S. on the 16th day of September, 2016, and described as follows:

that portion of road containing 53.8 square meters and labeled Parcel 1;

(hereinafter referred to as that portion of Road)

shall be closed to traffic.

2. The dedication as highway be removed of said portion of Road.
3. This Bylaw may be cited for all purposes as "Surrey Close and Remove the Dedication of Highway of a Portion of Road Adjacent to 11079 and 11089 Ravine Road and 13286 King George Boulevard Bylaw, 2017, No. 19136".

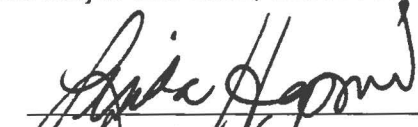
PASSED FIRST READING on the 6th day of March, 2017.

PASSED SECOND READING on the 6th day of March, 2017.

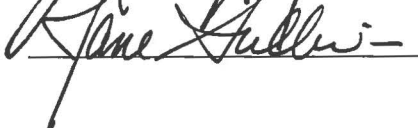
PASSED THIRD READING on the 6th day of March, 2017.

RECONSIDERED AND FINALLY ADOPTED, signed by the Mayor and Clerk, and sealed with the Corporate Seal on the 3rd day of April, 2017.





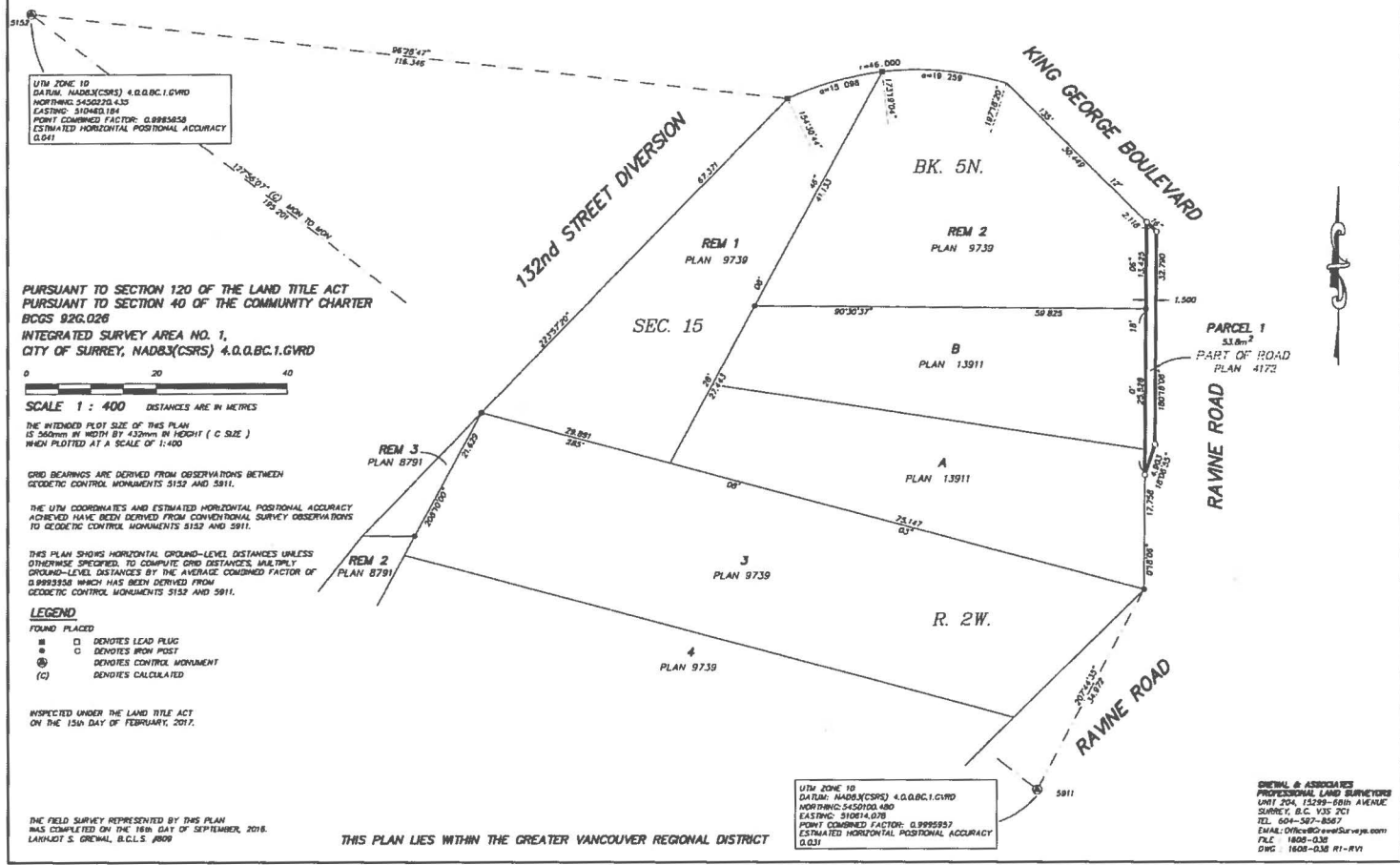
MAYOR



CLERK

REFERENCE PLAN TO ACCOMPANY
 BYLAW NO 19136 (CITY OF SURREY)
 TO CLOSE PART OF ROAD DEDICATED ON PLAN 4172
 SECTION 15 BLOCK 5 NORTH RANGE 2 WEST
 NEW WESTMINSTER DISTRICT

PLAN EPP65732



UTM ZONE 18
 DATUM: NAD83(CRS) 4.0.0.B.C.1.G.VRD
 NORTHING: 5450270.435
 EASTING: 310463.194
 POINT COMBINED FACTOR: 0.9995858
 ESTIMATED HORIZONTAL POSITIONAL ACCURACY: 0.041

PURSUANT TO SECTION 120 OF THE LAND TITLE ACT
 PURSUANT TO SECTION 40 OF THE COMMUNITY CHARTER
 B.C.G.S. 926.026
 INTEGRATED SURVEY AREA NO. 1,
 CITY OF SURREY, NAD83(CRS) 4.0.0.B.C.1.G.VRD

0 20 40
 SCALE 1 : 400 DISTANCES ARE IN METRES

THE INTENDED PLOT SIZE OF THIS PLAN
 IS 560mm BY 420mm BY HEIGHT (C SIZE)
 WHICH PLOTTED AT A SCALE OF 1:400

GRID BEARINGS ARE DERIVED FROM OBSERVATIONS BETWEEN
 GEODETIC CONTROL MONUMENTS 5152 AND 5911.

THE UTM COORDINATES AND ESTIMATED HORIZONTAL POSITIONAL ACCURACY
 ACHIEVED HAVE BEEN DERIVED FROM CONVENTIONAL SURVEY OBSERVATIONS
 TO GEODETIC CONTROL MONUMENTS 5152 AND 5911.

THIS PLAN SHOWS HORIZONTAL GROUND-LEVEL DISTANCES UNLESS
 OTHERWISE SPECIFIED. TO COMPUTE GRID DISTANCES, MULTIPLY
 GROUND-LEVEL DISTANCES BY THE AVERAGE COMBINED FACTOR OF
 0.9995858 WHICH HAS BEEN DERIVED FROM
 GEODETIC CONTROL MONUMENTS 5152 AND 5911.

LEGEND

- FOUND PLACED
- □ DENOTES LEAD PLUG
 - ○ DENOTES IRON POST
 - ⊕ ⊖ DENOTES CONTROL MONUMENT
 - (C) DENOTES CALCULATED

INSPECTED UNDER THE LAND TITLE ACT
 ON THE 15th DAY OF FEBRUARY, 2017.

THE FIELD SURVEY REPRESENTED BY THIS PLAN
 WAS COMPLETED ON THE 18th DAY OF SEPTEMBER, 2016.
 LARRY S. GREWAL, B.C.L.S. #809

THIS PLAN LIES WITHIN THE GREATER VANCOUVER REGIONAL DISTRICT

UTM ZONE 18
 DATUM: NAD83(CRS) 4.0.0.B.C.1.G.VRD
 NORTHING: 5450100.480
 EASTING: 310464.039
 POINT COMBINED FACTOR: 0.9995957
 ESTIMATED HORIZONTAL POSITIONAL ACCURACY: 0.037

GREWAL & ASSOCIATES
 PROFESSIONAL LAND SURVEYERS
 UNIT 204, 15299-88th AVENUE
 SURREY, B.C. V3S 7C1
 TEL: 604-597-8067
 EMAIL: OFFICE@GrewalSurvey.com
 P.L.C. 1808-030
 D.W.C. 1808-030 R1-R11