

CITY OF SURREY

BYLAW NO. 18898

A Bylaw to close and to remove the dedication
of a highway of portions of road
.....

WHEREAS pursuant to Subsection 40(1)(a) of the *Community Charter*, S.B.C. 2003, c. 26, the Council may, by bylaw, close all or part of a highway that is vested in the municipality to all or some types of traffic;

AND WHEREAS pursuant to Section 40(2) of the *Community Charter*, S.B.C. 2003, c. 26, the Council may, by bylaw, remove the dedication of a highway that has been closed by a bylaw under Subsection 40(1)(a).

NOW, THEREFORE the Council of the City of Surrey ENACTS as follows:

1. That portion of Section 16 Township 8 New Westminster District dedicated by Plan LMP 27384 shown outlined in heavy black line on a Reference Plan EPP69657 attached hereto, prepared by Lakhjot S. Grewal, B.C.L.S. on the 20th day of January, 2017, and described as follows:

that portion of road containing 32.5 square meters and labeled Parcel 1;

(hereinafter referred to as that portion of Road)

shall be closed to traffic.


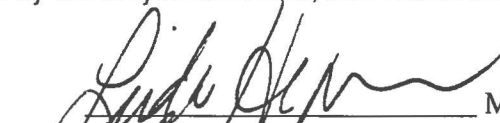
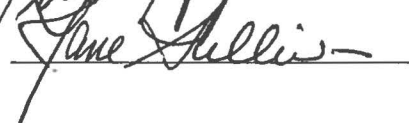
2. The dedication as highway be removed of said portion of Road.
3. This Bylaw may be cited for all purposes as "Surrey Close and Remove the Dedication of Highway of a Portion of Road Adjacent to 18609 – 64 Avenue Bylaw, 2017, No. 18898".

PASSED FIRST READING on the 20th day of February, 2017.

PASSED SECOND READING on the 20th day of February, 2017.

PASSED THIRD READING on the 20th day of February, 2017.

RECONSIDERED AND FINALLY ADOPTED, signed by the Mayor and Clerk, and sealed with the Corporate Seal on the 6th day of March, 2017.

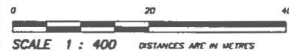

 MAYOR
 CLERK

REFERENCE PLAN TO ACCOMPANY BYLAW No. 18898
 (CITY OF SURREY) TO CLOSE PART OF ROAD
 DEDICATED ON PLAN LMP27384
 SECTION 16 TOWNSHIP 8
 NEW WESTMINSTER DISTRICT

PLAN EPP69657

PURSUANT TO SECTION 120 OF THE LAND TITLE ACT
 PURSUANT TO SECTION 40 OF THE COMMUNITY CHARTER
 BCGS 926.017

INTEGRATED SURVEY AREA NO. 1,
 CITY OF SURREY, NAD83(CSRS) 4.0.0.BC.1.GVRD

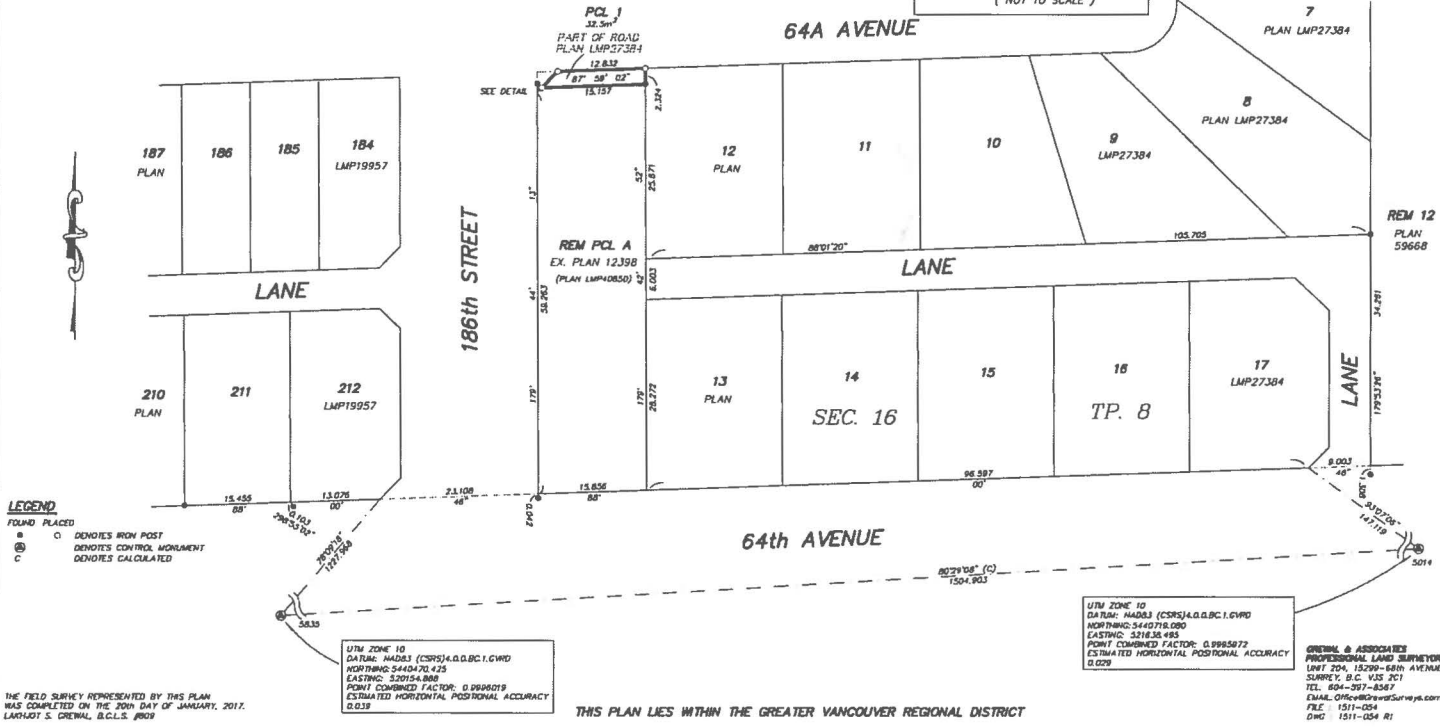
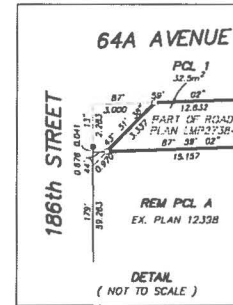


THE INTENDED PLOT SIZE OF THIS PLAN
 IS 500mm BY 1000mm BY 420mm BY HEIGHT (C SIZE)
 WHEN PLOTTED AT A SCALE OF 1:400

GRID BEARINGS ARE DERIVED FROM OBSERVATIONS BETWEEN
 GEODETIC CONTROL MONUMENTS 5014 AND 5833.

THE UTM COORDINATES AND ESTIMATED HORIZONTAL POSITIONAL ACCURACY
 ADRESSED HAVE BEEN DERIVED FROM CONVENTIONAL SURVEY OBSERVATIONS
 TO GEODETIC CONTROL MONUMENTS 5014 AND 5833.

THIS PLAN SHOWS HORIZONTAL GROUND-LEVEL DISTANCES UNLESS
 OTHERWISE SPECIFIED. TO COMPUTE GRID DISTANCES, MULTIPLY
 GROUND-LEVEL DISTANCES BY THE AVERAGE CORRECTION FACTOR OF
 0.9993996 WHICH HAS BEEN DERIVED FROM
 GEODETIC CONTROL MONUMENTS 5014 AND 5833.



THE FIELD SURVEY REPRESENTED BY THIS PLAN
 WAS COMPLETED ON THE 20th DAY OF JANUARY, 2017.
 LARRYOT S. GRENWALD, B.C.L.S. #809

UTM ZONE 10
 DATUM: NAD83 (CSRS) 4.0.0.BC.1.GVRD
 NORTHING: 5440470.425
 EASTING: 520154.808
 POINT COMBINED FACTOR: 0.9994019
 ESTIMATED HORIZONTAL POSITIONAL ACCURACY
 0.039

UTM ZONE 10
 DATUM: NAD83 (CSRS) 4.0.0.BC.1.GVRD
 NORTHING: 5440718.080
 EASTING: 521635.493
 POINT COMBINED FACTOR: 0.9995072
 ESTIMATED HORIZONTAL POSITIONAL ACCURACY
 0.029

GRENWALD & ASSOCIATES
 PROFESSIONAL LAND SURVEYORS
 UNIT 204, 15209-68th AVENUE
 SURREY, B.C. V3S 2C1
 TEL: 604-297-8587
 EMAIL: OFFICE@GRENWALDSURVEYS.COM
 FILE: 1511-054
 DWG: 1511-054 R1

THIS PLAN LIES WITHIN THE GREATER VANCOUVER REGIONAL DISTRICT