

CITY OF SURREY

BYLAW NO. 18871

A Bylaw to close and to remove the dedication
of a highway of portions of road
.....

WHEREAS pursuant to Subsection 40(1)(a) of the *Community Charter*, S.B.C. 2003, c. 26, the Council may, by bylaw, close all or part of a highway that is vested in the municipality to all or some types of traffic;

AND WHEREAS pursuant to Section 40(2) of the *Community Charter*, S.B.C. 2003, c. 26, the Council may, by bylaw, remove the dedication of a highway that has been closed by a bylaw under Subsection 40(1)(a).

NOW, THEREFORE the Council of the City of Surrey ENACTS as follows:

1. Those portions of Section 6 Township 2 West New Westminster District dedicated by Plan LMP 1203 shown outlined in heavy black line on a Reference Plan EPP 69424 attached hereto, prepared by Lorin Levac, B.C.L.S. on the 20th day of January, 2017, and described as follows:

that portion of road containing 167.0 square metres and labeled Parcel "A";

(hereinafter referred to as that portion of Road)

shall be closed to traffic.

2. The dedication as highway be removed of said portion of Road.
3. This Bylaw may be cited for all purposes as "Surrey Close and Remove the Dedication of Highway of a Portion of Road Adjacent to 12609 – 55 Avenue and 12618 – 55A Avenue Bylaw, 2017, No. 18871".

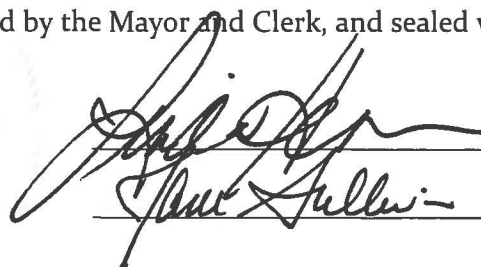
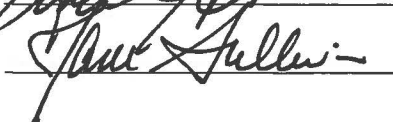
PASSED FIRST READING on the 29th day of May, 2017.

PASSED SECOND READING on the 29th day of May, 2017.

PASSED THIRD READING on the 29th day of May, 2017.

RECEIVED APPROVAL FROM THE MINISTRY OF TRANSPORTATION AND INFRASTRUCTURE
on the 18th day of July, 2017

RECONSIDERED AND FINALLY ADOPTED, signed by the Mayor and Clerk, and sealed with the
Corporate Seal on the 27th day of July, 2017.

 MAYOR
 CLERK

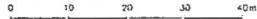
REFERENCE PLAN TO ACCOMPANY CITY OF SURREY
 HIGHWAY DEDICATION CANCELLATION BYLAW No.18871
 COVERING PART OF LANE DEDICATED ON PLAN LMP1203
 SECTION 6 TOWNSHIP 2 NEW WESTMINSTER DISTRICT

PLAN EPP69424

PURSUANT TO SECTION 120 OF THE LAND TITLE ACT
 AND SECTION 40 OF THE COMMUNITY CHARTER

BCGS 92G.016
 CITY OF SURREY

SCALE 1:500



(All distances are in metres)

The intended plot size of this plan is 559-mm in width by 432mm in height (C size) when plotted at a scale of 1:500

LEGEND

- ⊙ indicates geospatial control monument found
- indicates standard iron post found
- indicates standard iron post placed
- ⊠ indicates disturbed

Note: This plan shows one or more witness posts which are not set on the true corner(s).

Grid bearings are derived from observations between geospatial control monuments 5245 and 5614. Integrated Survey Area No. 1, Surrey, B.C., NAD 83 (CSRS) 4-DIGIT.DWG

The plan shows horizontal ground-level distances unless otherwise specified. To compute grid distances, multiply ground-level distances by the average combined factor of 0.9999945, which has been derived from geospatial control monuments 5245 and 5614.

The UTM coordinates and estimated horizontal positions accuracy achieved have been derived from the GeBC VASC01 published coordinates and station elevations for geospatial control monuments 5245 and 5614.

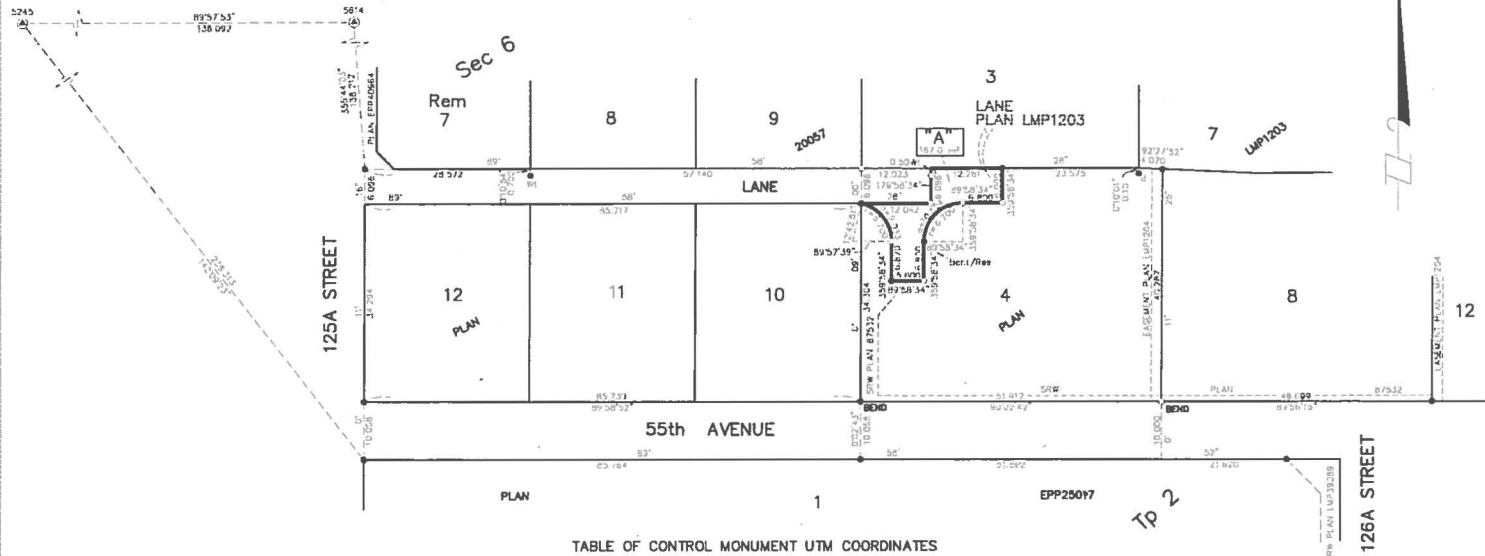


TABLE OF CONTROL MONUMENT UTM COORDINATES

TABLE MARKING	DATUM	UTM		COMBINED SCALE FACTOR	ESTIMATED ACCURACY AT 90% CONFIDENCE (m)
		ZONE	E (m)		
5245	NAD 83 (CSRS)	10	5439069.735	509071.828	±0.050
5614	4-DIGIT.DWG		5439069.219	509119.845	±0.045

DHALJWAL & ASSOCIATES
 LAND SURVEYING INC.

2215 129th - 76th Avenue
 Surrey, B.C. V3W 1E9
 phone: 604-501-6188
 email: info@dhaljwalandsurveying.com

FILE : 1612114-R01

THIS PLAN LIES WITHIN THE GREATER VANCOUVER REGIONAL DISTRICT

The field survey represented by this plan was completed on the 20th day of January, 2017.

Levin Levac BCLS 887