

CITY OF SURREY

BYLAW NO. 18752

A Bylaw to close and to remove the dedication  
of a highway of portions of road  
.....

WHEREAS pursuant to Subsection 40(1)(a) of the *Community Charter*, S.B.C. 2003, c. 26, the Council may, by bylaw, close all or part of a highway that is vested in the municipality to all or some types of traffic;

AND WHEREAS pursuant to Section 40(2) of the *Community Charter*, S.B.C. 2003, c. 26, the Council may, by bylaw, remove the dedication of a highway that has been closed by a bylaw under Subsection 40(1)(a).

NOW, THEREFORE the Council of the City of Surrey ENACTS as follows:

1. That portion of Section 35 Block 5 North Range 3 West New Westminster District dedicated by Plan 22485 shown outlined in heavy black line on a Reference Plan EPP67894 attached hereto, prepared by Lorin Levac, B.C.L.S. on the 18th day of November, 2016, and described as follows:

that portion of road containing 27.4 square meters and labeled Parcel A;

(hereinafter referred to as that portion of Road)

shall be closed to traffic.

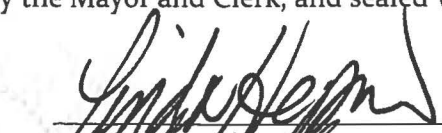
2. The dedication as highway be removed of said portion of Road.
3. This Bylaw may be cited for all purposes as "Surrey Close and Remove the Dedication of Highway of a Portion of Road Adjacent to 11342 and 11348 River Road Bylaw, 2017, No. 18752".


PASSED FIRST READING on the 16th day of January, 2017.

PASSED SECOND READING on the 16th day of January, 2017.

PASSED THIRD READING on the 16th day of January, 2017.

RECONSIDERED AND FINALLY ADOPTED, signed by the Mayor and Clerk, and sealed with the Corporate Seal on the 6th day of February, 2017.

  
\_\_\_\_\_  
MAYOR

  
\_\_\_\_\_  
CLERK

REFERENCE PLAN TO ACCOMPANY CITY OF SURREY  
 HIGHWAY DEDICATION CANCELLATION BYLAW No. 18752  
 COVERING PART OF ROAD DEDICATED ON PLAN 22485  
 SECTION 35 BLOCK 5 NORTH RANGE 3 WEST NEW WESTMINSTER DISTRICT

PLAN EPP67894

PURSUANT TO SECTION 120 OF THE LAND TITLE ACT  
 AND SECTION 40 OF THE COMMUNITY CHARTER

BCGS 92G.016  
 CITY OF SURREY

SCALE 1:500



(All distances are in metres)

The window plot size of this plan is 350mm in width by 425mm in height (0.875) when plotted at a scale of 1:500.

Grid bearings are derived from observations between geodetic control monuments 5372 and 5901 Integrated Survey Area No. 1, Surrey, B.C. NAD 83 (12503) 4 11.7 921.12400

This plan shows horizontal ground-level distances unless otherwise specified. To compute grid distances, multiply ground-level distances by the average combined factor of 0.999980 which has been derived from geodetic control monuments 5372 and 5901.

LEGEND

- ⊙ indicates geodetic control monument found
- indicates standard from post found
- indicates standard from post placed

The UTM coordinates and estimated horizontal position accuracy obtained have been derived from the GeoBC MASCOT published coordinates and standard deviations for geodetic control monuments 5372 and 5901.

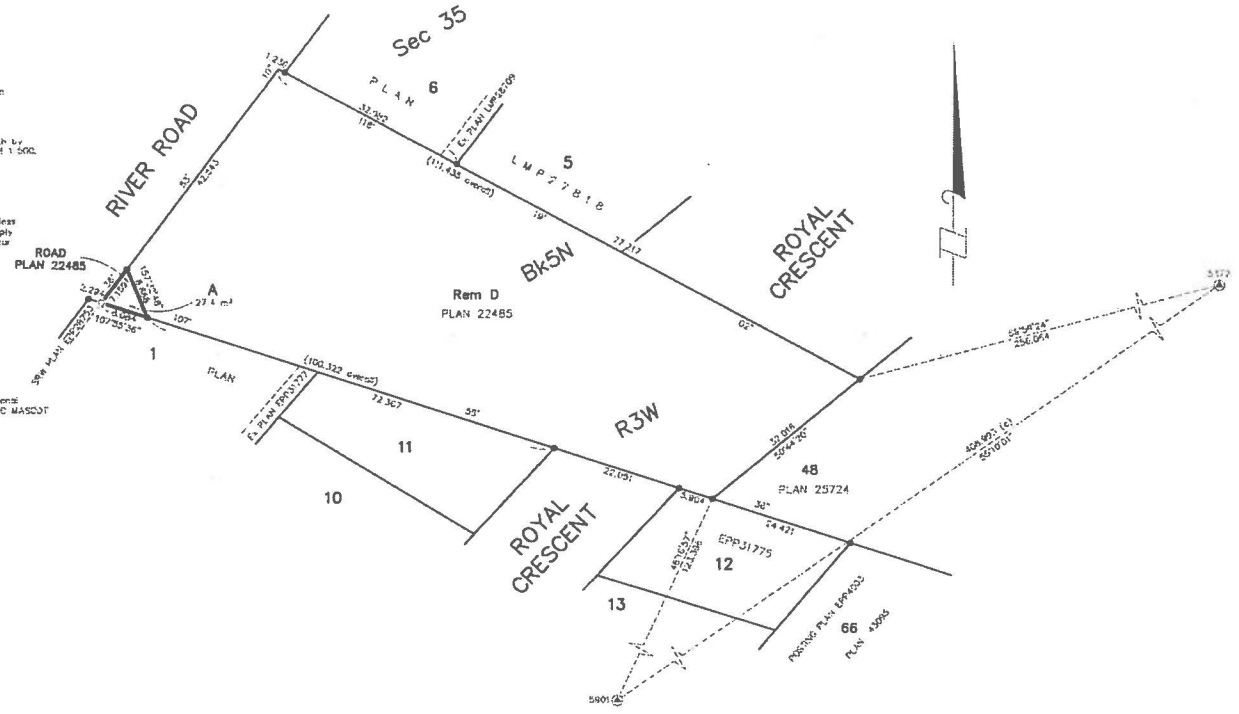


TABLE OF CONTROL MONUMENT UTM COORDINATES

TABLET	DATUM	UTM		COMBINED SCALE FACTOR	ESTIMATED ACCURACY AT 90% CONFIDENCE (m)
		ZONE	E (m)		
5372	NAD 83 (CSRS)	10	5447467.318	505682.785	0.0965985
5901	NAD 83 (CSRS)	10	5447700.636	507638.369	0.0995963

DHALIWA & ASSOCIATES  
 LAND SURVEYING INC.

2110 - 12835 - 76th Avenue  
 Surrey, B.C. V0N 1K8  
 PHONE: 604-271-8188  
 EMAIL: info@dhalawal.com

FILE : 1310003-01

THIS PLAN LIES WITHIN THE GREATER VANCOUVER REGIONAL DISTRICT

This field survey represented by this plan was completed on the 16th day of November, 2018.

Scale: 1:500 B.C.S. 981