

CITY OF SURREY

BYLAW NO. 18751

A Bylaw to close and to remove the dedication
of a highway of portions of road
.....

WHEREAS pursuant to Subsection 40(1)(a) of the *Community Charter*, S.B.C. 2003, c. 26, the Council may, by bylaw, close all or part of a highway that is vested in the municipality to all or some types of traffic;

AND WHEREAS pursuant to Section 40(2) of the *Community Charter*, S.B.C. 2003, c. 26, the Council may, by bylaw, remove the dedication of a highway that has been closed by a bylaw under Subsection 40(1)(a).

NOW, THEREFORE the Council of the City of Surrey ENACTS as follows:

1. Those portions of Section 27 Block 5 North Range 2 West New Westminster District Dedicated by Plan 1726 shown outlined in heavy black line on a Reference Plan EPP62862 attached hereto, prepared by Scott E. Netherton, B.C.L.S. on the 10th day of June, 2016, and described as follows:
 - a. that portion of road containing 440.5 square metres and labelled '1';

(hereinafter referred to as that portion of Road)shall be closed to traffic.
2. The dedication as highway be removed of said portion of Road.
3. This Bylaw may be cited for all purposes as "Surrey Close and Remove the Dedication of Highway of a Portion of Road Adjacent to 13400, 13408, 13418 - 103 Avenue, 10281 University Drive and 13407, 13409 and 13433 - 102A Avenue Bylaw, 2016, No. 18751"

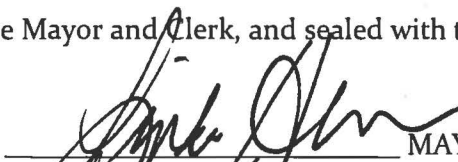
PASSED FIRST READING on the 12th day of September, 2016.

PASSED SECOND READING on the 12th day of September, 2016.

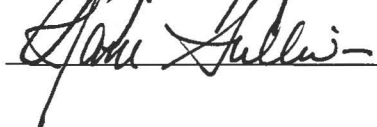
PASSED THIRD READING on the 12th day of September, 2016.

RECONSIDERED AND FINALLY ADOPTED, signed by the Mayor and Clerk, and sealed with the Corporate Seal on the 3rd day of October, 2016.





MAYOR



CLERK

**REFERENCE PLAN TO ACCOMPANY CITY OF SURREY HIGHWAY
DEDICATION CANCELLATION BYLAW No.18751 OF A
PORTION OF ROAD LYING IN SEC 27 BK 5N R 2W
NEW WESTMINSTER DISTRICT
BCGS 92G.016**

PLAN EPP62862

PURSUANT TO SECTION 120, LAND TITLE ACT
PURSUANT TO SECTION 40, COMMUNITY CHARTER

LEGEND

- ⊕ DENOTES CONTROL MONUMENT FOUND
- ⊙ DENOTES STANDARD IRON POST FOUND
- DENOTES STANDARD IRON POST SET
- (*) DENOTES CALCULATED

BOOK OF REFERENCE		
DESCRIPTION	AREA	LOT
ROAD TO BE CLOSED		
PORTION OF ROAD LYING IN SEC 27 BK 5N R 2W ROAD DEDICATED BY PLAN 1726	440.5 m ²	1

INTEGRATED SURVEY AREA NO. 1, SURREY, NAD83 (CSRS) 4.0.0.BC.1.GVRD

GRID BEARINGS ARE DERIVED FROM OBSERVATIONS BETWEEN
GEODETIC CONTROL MONUMENTS 5791 AND 8717.

THIS PLAN SHOWS HORIZONTAL GROUND-LEVEL DISTANCES UNLESS
OTHERWISE SPECIFIED. TO COMPUTE GRID DISTANCES, MULTIPLY
GROUND-LEVEL DISTANCES BY THE AVERAGE COMBINED SCALE FACTOR OF 0.9995913
WHICH HAS BEEN DERIVED FROM CONTROL MONUMENT 8717.

THE INTENDED PLOT SIZE OF THIS PLAN IS
430mm IN WIDTH BY 560mm IN HEIGHT
(USE C SIZE SHEET) WHEN PLOTTED AT A SCALE OF 1:750.

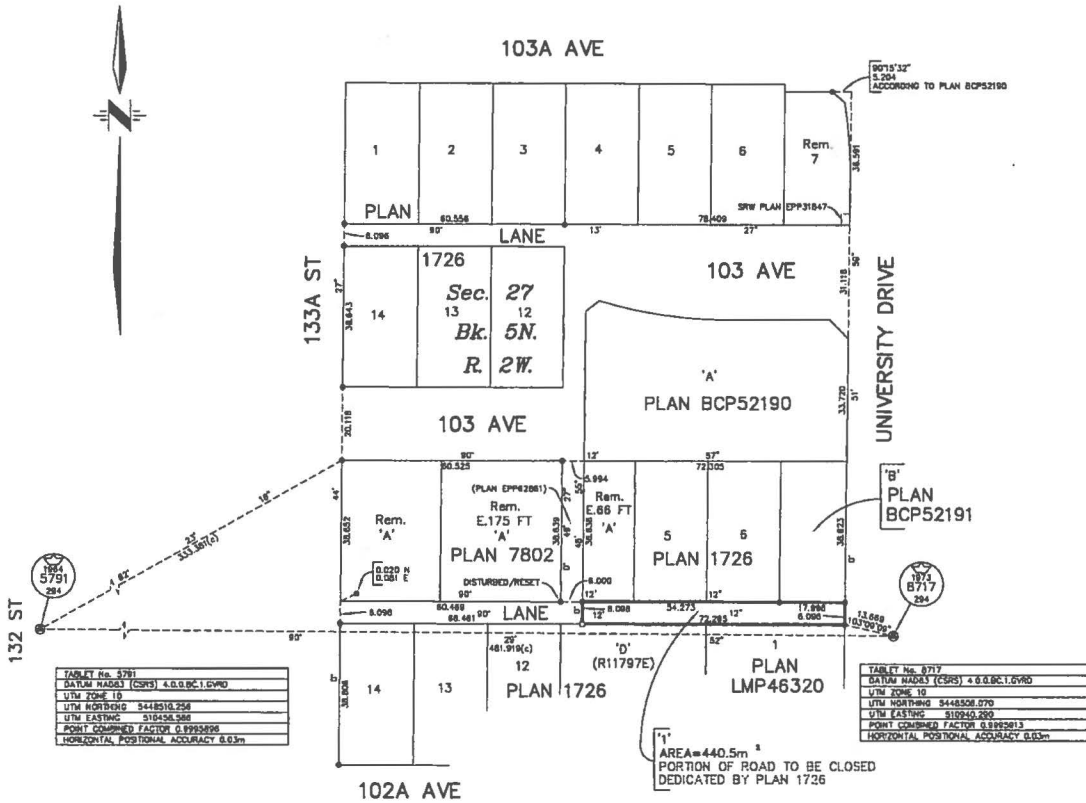


TABLE No. 5791
DATUM NAD83 (CSRS) 4.0.0.BC.1.GVRD
UTM ZONE 18
UTM NORTHING 5448510.258
UTM EASTING 510426.580
POINT COMBINED FACTOR 0.9995913
HORIZONTAL POSITIONAL ACCURACY 0.03m

TABLE No. 8717
DATUM NAD83 (CSRS) 4.0.0.BC.1.GVRD
UTM ZONE 18
UTM NORTHING 5448508.070
UTM EASTING 510940.200
POINT COMBINED FACTOR 0.9995913
HORIZONTAL POSITIONAL ACCURACY 0.03m

CITY OF SURREY
SURVEY SECTION
14245 - 58 AVE.
SURREY, B.C. V3X 3A2
TEL. (604) 591-4253
FAX. (604) 591-8883

**THIS PLAN LIES WITHIN THE GREATER
VANCOUVER REGIONAL DISTRICT**

THE FIELD SURVEY REPRESENTED BY THIS PLAN WAS COMPLETED ON
THE 10th DAY OF JUNE, 2016.
SCOTT E. HETHERINGTON, BCLS No.780