

CITY OF SURREY

BYLAW NO. 18740

A Bylaw to close and to remove the dedication
of a highway of portions of road
.....

WHEREAS pursuant to Subsection 40(1)(a) of the *Community Charter*, S.B.C. 2003, c. 26, the Council may, by bylaw, close all or part of a highway that is vested in the municipality to all or some types of traffic;

AND WHEREAS pursuant to Section 40(2) of the *Community Charter*, S.B.C. 2003, c. 26, the Council may, by bylaw, remove the dedication of a highway that has been closed by a bylaw under Subsection 40(1)(a).

NOW, THEREFORE the Council of the City of Surrey ENACTS as follows:

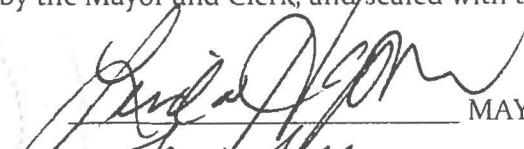
1. That portion of Section 35 Block 5 North Range 1 West New Westminster District dedicated by Plan 10458 shown outlined in heavy black line on a Reference Plan EPP60377 attached hereto, prepared by Eugene Wong, B.C.L.S. on the 12th day of March, 2016, and described as follows:
 - a. that portion of road containing 0.2015 hectares and labeled Parcel A;
 - b. that portion of road containing 163.3 square meters and labelled Parcel B; and
 - c. that portion of road containing 428.1 square meters and labelled Parcel C
(hereinafter referred to as that portion of Road)shall be closed to traffic.
2. The dedication as highway be removed of said portions of Road.
3. This Bylaw may be cited for all purposes as "Surrey Close and Remove the Dedication of Highway of a Portion of Road Adjacent to 16221 – 96B Avenue, 9678, 9699, 9697, 9702, 9722, 9725, 9734, 9745 and 9763 – 162A Street Bylaw, 2016, No. 18740".

PASSED FIRST READING on the 27th day of June, 2016.

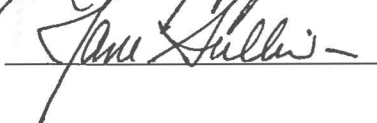
PASSED SECOND READING on the 27th day of June, 2016.

PASSED THIRD READING on the 27th day of June, 2016.

RECONSIDERED AND FINALLY ADOPTED, signed by the Mayor and Clerk, and sealed with the Corporate Seal on the 11th day of July, 2016.



MAYOR



CLERK

REFERENCE PLAN TO ACCOMPANY CITY OF SURREY
 ROAD DEDICATION CANCELLATION BYLAW NO. 18740
 OF A PORTION OF ROAD DEDICATED ON PLAN 10458
 SECTION 35 BLOCK 5 NORTH RANGE 1 WEST
 NEW WESTMINSTER DISTRICT

PLAN EPP60377

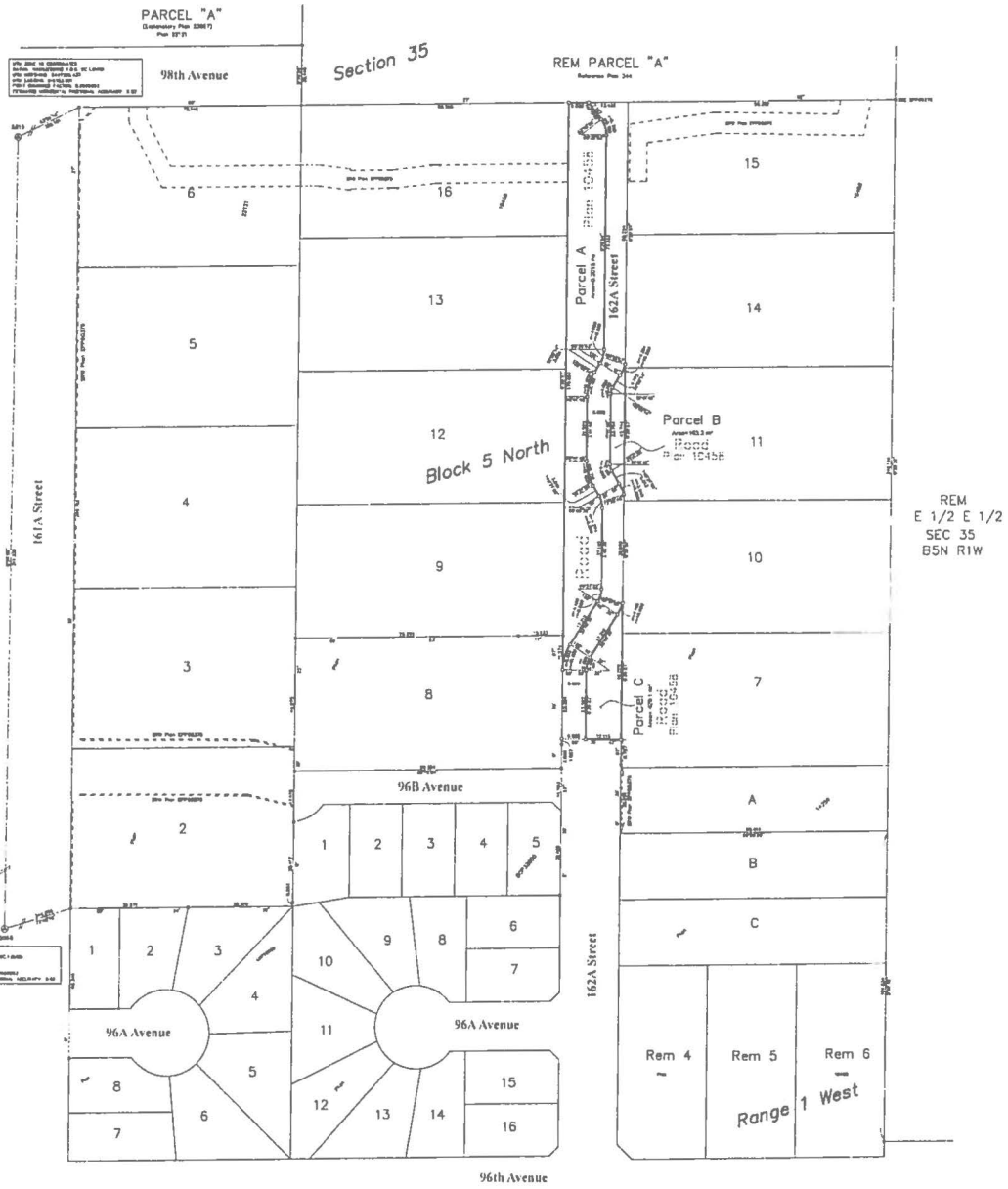
PURSUANT TO SECTION 120, LAND TITLE ACT
 AND SECTION 40 OF THE COMMUNITY CHARTER

BC20 870617

LEGEND

SCALE 1:500

- 1. ALL DIMENSIONS ARE IN METERS
- 2. UNLESS OTHERWISE SPECIFIED, ALL DIMENSIONS ARE TO FACE
- 3. UNLESS OTHERWISE SPECIFIED, ALL DIMENSIONS ARE TO FACE
- 4. UNLESS OTHERWISE SPECIFIED, ALL DIMENSIONS ARE TO FACE
- 5. UNLESS OTHERWISE SPECIFIED, ALL DIMENSIONS ARE TO FACE
- 6. UNLESS OTHERWISE SPECIFIED, ALL DIMENSIONS ARE TO FACE
- 7. UNLESS OTHERWISE SPECIFIED, ALL DIMENSIONS ARE TO FACE
- 8. UNLESS OTHERWISE SPECIFIED, ALL DIMENSIONS ARE TO FACE
- 9. UNLESS OTHERWISE SPECIFIED, ALL DIMENSIONS ARE TO FACE
- 10. UNLESS OTHERWISE SPECIFIED, ALL DIMENSIONS ARE TO FACE
- 11. UNLESS OTHERWISE SPECIFIED, ALL DIMENSIONS ARE TO FACE
- 12. UNLESS OTHERWISE SPECIFIED, ALL DIMENSIONS ARE TO FACE
- 13. UNLESS OTHERWISE SPECIFIED, ALL DIMENSIONS ARE TO FACE
- 14. UNLESS OTHERWISE SPECIFIED, ALL DIMENSIONS ARE TO FACE
- 15. UNLESS OTHERWISE SPECIFIED, ALL DIMENSIONS ARE TO FACE
- 16. UNLESS OTHERWISE SPECIFIED, ALL DIMENSIONS ARE TO FACE
- 17. UNLESS OTHERWISE SPECIFIED, ALL DIMENSIONS ARE TO FACE
- 18. UNLESS OTHERWISE SPECIFIED, ALL DIMENSIONS ARE TO FACE
- 19. UNLESS OTHERWISE SPECIFIED, ALL DIMENSIONS ARE TO FACE
- 20. UNLESS OTHERWISE SPECIFIED, ALL DIMENSIONS ARE TO FACE
- 21. UNLESS OTHERWISE SPECIFIED, ALL DIMENSIONS ARE TO FACE
- 22. UNLESS OTHERWISE SPECIFIED, ALL DIMENSIONS ARE TO FACE
- 23. UNLESS OTHERWISE SPECIFIED, ALL DIMENSIONS ARE TO FACE
- 24. UNLESS OTHERWISE SPECIFIED, ALL DIMENSIONS ARE TO FACE
- 25. UNLESS OTHERWISE SPECIFIED, ALL DIMENSIONS ARE TO FACE
- 26. UNLESS OTHERWISE SPECIFIED, ALL DIMENSIONS ARE TO FACE
- 27. UNLESS OTHERWISE SPECIFIED, ALL DIMENSIONS ARE TO FACE
- 28. UNLESS OTHERWISE SPECIFIED, ALL DIMENSIONS ARE TO FACE
- 29. UNLESS OTHERWISE SPECIFIED, ALL DIMENSIONS ARE TO FACE
- 30. UNLESS OTHERWISE SPECIFIED, ALL DIMENSIONS ARE TO FACE
- 31. UNLESS OTHERWISE SPECIFIED, ALL DIMENSIONS ARE TO FACE
- 32. UNLESS OTHERWISE SPECIFIED, ALL DIMENSIONS ARE TO FACE
- 33. UNLESS OTHERWISE SPECIFIED, ALL DIMENSIONS ARE TO FACE
- 34. UNLESS OTHERWISE SPECIFIED, ALL DIMENSIONS ARE TO FACE
- 35. UNLESS OTHERWISE SPECIFIED, ALL DIMENSIONS ARE TO FACE
- 36. UNLESS OTHERWISE SPECIFIED, ALL DIMENSIONS ARE TO FACE
- 37. UNLESS OTHERWISE SPECIFIED, ALL DIMENSIONS ARE TO FACE
- 38. UNLESS OTHERWISE SPECIFIED, ALL DIMENSIONS ARE TO FACE
- 39. UNLESS OTHERWISE SPECIFIED, ALL DIMENSIONS ARE TO FACE
- 40. UNLESS OTHERWISE SPECIFIED, ALL DIMENSIONS ARE TO FACE
- 41. UNLESS OTHERWISE SPECIFIED, ALL DIMENSIONS ARE TO FACE
- 42. UNLESS OTHERWISE SPECIFIED, ALL DIMENSIONS ARE TO FACE
- 43. UNLESS OTHERWISE SPECIFIED, ALL DIMENSIONS ARE TO FACE
- 44. UNLESS OTHERWISE SPECIFIED, ALL DIMENSIONS ARE TO FACE
- 45. UNLESS OTHERWISE SPECIFIED, ALL DIMENSIONS ARE TO FACE
- 46. UNLESS OTHERWISE SPECIFIED, ALL DIMENSIONS ARE TO FACE
- 47. UNLESS OTHERWISE SPECIFIED, ALL DIMENSIONS ARE TO FACE
- 48. UNLESS OTHERWISE SPECIFIED, ALL DIMENSIONS ARE TO FACE
- 49. UNLESS OTHERWISE SPECIFIED, ALL DIMENSIONS ARE TO FACE
- 50. UNLESS OTHERWISE SPECIFIED, ALL DIMENSIONS ARE TO FACE
- 51. UNLESS OTHERWISE SPECIFIED, ALL DIMENSIONS ARE TO FACE
- 52. UNLESS OTHERWISE SPECIFIED, ALL DIMENSIONS ARE TO FACE
- 53. UNLESS OTHERWISE SPECIFIED, ALL DIMENSIONS ARE TO FACE
- 54. UNLESS OTHERWISE SPECIFIED, ALL DIMENSIONS ARE TO FACE
- 55. UNLESS OTHERWISE SPECIFIED, ALL DIMENSIONS ARE TO FACE
- 56. UNLESS OTHERWISE SPECIFIED, ALL DIMENSIONS ARE TO FACE
- 57. UNLESS OTHERWISE SPECIFIED, ALL DIMENSIONS ARE TO FACE
- 58. UNLESS OTHERWISE SPECIFIED, ALL DIMENSIONS ARE TO FACE
- 59. UNLESS OTHERWISE SPECIFIED, ALL DIMENSIONS ARE TO FACE
- 60. UNLESS OTHERWISE SPECIFIED, ALL DIMENSIONS ARE TO FACE
- 61. UNLESS OTHERWISE SPECIFIED, ALL DIMENSIONS ARE TO FACE
- 62. UNLESS OTHERWISE SPECIFIED, ALL DIMENSIONS ARE TO FACE
- 63. UNLESS OTHERWISE SPECIFIED, ALL DIMENSIONS ARE TO FACE
- 64. UNLESS OTHERWISE SPECIFIED, ALL DIMENSIONS ARE TO FACE
- 65. UNLESS OTHERWISE SPECIFIED, ALL DIMENSIONS ARE TO FACE
- 66. UNLESS OTHERWISE SPECIFIED, ALL DIMENSIONS ARE TO FACE
- 67. UNLESS OTHERWISE SPECIFIED, ALL DIMENSIONS ARE TO FACE
- 68. UNLESS OTHERWISE SPECIFIED, ALL DIMENSIONS ARE TO FACE
- 69. UNLESS OTHERWISE SPECIFIED, ALL DIMENSIONS ARE TO FACE
- 70. UNLESS OTHERWISE SPECIFIED, ALL DIMENSIONS ARE TO FACE
- 71. UNLESS OTHERWISE SPECIFIED, ALL DIMENSIONS ARE TO FACE
- 72. UNLESS OTHERWISE SPECIFIED, ALL DIMENSIONS ARE TO FACE
- 73. UNLESS OTHERWISE SPECIFIED, ALL DIMENSIONS ARE TO FACE
- 74. UNLESS OTHERWISE SPECIFIED, ALL DIMENSIONS ARE TO FACE
- 75. UNLESS OTHERWISE SPECIFIED, ALL DIMENSIONS ARE TO FACE
- 76. UNLESS OTHERWISE SPECIFIED, ALL DIMENSIONS ARE TO FACE
- 77. UNLESS OTHERWISE SPECIFIED, ALL DIMENSIONS ARE TO FACE
- 78. UNLESS OTHERWISE SPECIFIED, ALL DIMENSIONS ARE TO FACE
- 79. UNLESS OTHERWISE SPECIFIED, ALL DIMENSIONS ARE TO FACE
- 80. UNLESS OTHERWISE SPECIFIED, ALL DIMENSIONS ARE TO FACE
- 81. UNLESS OTHERWISE SPECIFIED, ALL DIMENSIONS ARE TO FACE
- 82. UNLESS OTHERWISE SPECIFIED, ALL DIMENSIONS ARE TO FACE
- 83. UNLESS OTHERWISE SPECIFIED, ALL DIMENSIONS ARE TO FACE
- 84. UNLESS OTHERWISE SPECIFIED, ALL DIMENSIONS ARE TO FACE
- 85. UNLESS OTHERWISE SPECIFIED, ALL DIMENSIONS ARE TO FACE
- 86. UNLESS OTHERWISE SPECIFIED, ALL DIMENSIONS ARE TO FACE
- 87. UNLESS OTHERWISE SPECIFIED, ALL DIMENSIONS ARE TO FACE
- 88. UNLESS OTHERWISE SPECIFIED, ALL DIMENSIONS ARE TO FACE
- 89. UNLESS OTHERWISE SPECIFIED, ALL DIMENSIONS ARE TO FACE
- 90. UNLESS OTHERWISE SPECIFIED, ALL DIMENSIONS ARE TO FACE
- 91. UNLESS OTHERWISE SPECIFIED, ALL DIMENSIONS ARE TO FACE
- 92. UNLESS OTHERWISE SPECIFIED, ALL DIMENSIONS ARE TO FACE
- 93. UNLESS OTHERWISE SPECIFIED, ALL DIMENSIONS ARE TO FACE
- 94. UNLESS OTHERWISE SPECIFIED, ALL DIMENSIONS ARE TO FACE
- 95. UNLESS OTHERWISE SPECIFIED, ALL DIMENSIONS ARE TO FACE
- 96. UNLESS OTHERWISE SPECIFIED, ALL DIMENSIONS ARE TO FACE
- 97. UNLESS OTHERWISE SPECIFIED, ALL DIMENSIONS ARE TO FACE
- 98. UNLESS OTHERWISE SPECIFIED, ALL DIMENSIONS ARE TO FACE
- 99. UNLESS OTHERWISE SPECIFIED, ALL DIMENSIONS ARE TO FACE
- 100. UNLESS OTHERWISE SPECIFIED, ALL DIMENSIONS ARE TO FACE



L.T. AND ASSOCIATES
 LAND SURVEYORS LTD.
 100 - 1000 - 1000
 SUITE 100 - 1000
 VANCOUVER, B.C. V6Z 1K7
 TEL: 604-271-1111
 FAX: 604-271-1112

THIS PLAN IS A REFERENCE PLAN AND DOES NOT CONSTITUTE A GUARANTEE OF TITLE OR A WARRANTY OF ANY KIND. THE CITY OF SURREY IS NOT RESPONSIBLE FOR ANY ERRORS OR OMISSIONS IN THIS PLAN. THE USER OF THIS PLAN SHALL BE RESPONSIBLE FOR VERIFYING THE ACCURACY OF THE INFORMATION CONTAINED HEREIN.