

CITY OF SURREY

BYLAW NO. 18739

A Bylaw to close and to remove the dedication  
of a highway of portions of road  
.....

WHEREAS pursuant to Subsection 40(1)(a) of the *Community Charter*, S.B.C. 2003, c. 26, the Council may, by bylaw, close all or part of a highway that is vested in the municipality to all or some types of traffic;

AND WHEREAS pursuant to Section 40(2) of the *Community Charter*, S.B.C. 2003, c. 26, the Council may, by bylaw, remove the dedication of a highway that has been closed by a bylaw under Subsection 40(1)(a).

NOW, THEREFORE the Council of the City of Surrey ENACTS as follows:

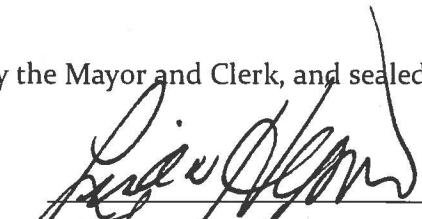
1. That portion of Section 35 Block 5 North Range 1 West New Westminster District dedicated by Plan BCP32050 shown outlined in heavy black line on a Reference Plan EPP60378 attached hereto, prepared by Eugene Wong, B.C.L.S. on the 14th day of March, 2016, and described as follows:
  - a. that portion of road containing 36.6 square metres and labeled Parcel A;  
  
(hereinafter referred to as that portion of Road)shall be closed to traffic.
2. The dedication as highway be removed of said portion of Road.
3. This Bylaw may be cited for all purposes as "Surrey Close and Remove the Dedication of Highway of a Portion of Road Adjacent to 9662 – 161A Street and 16206 – 96B Avenue Bylaw, 2016, No. 18739".

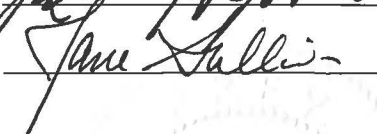
PASSED FIRST READING on the 27th day of June, 2016.


PASSED SECOND READING on the 27th day of June, 2016.

PASSED THIRD READING on the 27th day of June, 2016.

RECONSIDERED AND FINALLY ADOPTED, signed by the Mayor and Clerk, and sealed with the Corporate Seal on the 11th day of July, 2016.

  
\_\_\_\_\_  
MAYOR

  
\_\_\_\_\_  
CLERK



**REFERENCE PLAN TO ACCOMPANY CITY OF SURREY  
ROAD DEDICATION CANCELLATION BYLAW NO.18739  
OF A PORTION OF ROAD DEDICATED ON PLAN BCP32050  
SECTION 35 BLOCK 5 NORTH RANGE 1 WEST  
NEW WESTMINSTER DISTRICT**

**PLAN EPP60378**

PURSUANT TO SECTION 120, LAND TITLE ACT  
AND SECTION 40 OF THE COMMUNITY CHARTER

BCGS 92G.017

**LEGEND**

SCALE 1:500



ALL DISTANCES ARE IN METRES  
THE INTENDED PLOT SIZE OF THIS PLAN  
IS 432mm IN HEIGHT BY 580mm IN WIDTH (C SIZE)  
WHEN PLOTTED AT A SCALE OF 1:500.

INTEGRATED SURVEY AREA NO.1, SURREY, B.C.  
NAD83 (CSRS) 4.0.0 BC.1.0VRD

GRID BEARINGS ARE DERIVED FROM OBSERVATIONS BETWEEN  
GEODETIC CONTROL MONUMENTS 5068 AND 5819

THE UTM COORDINATES AND ESTIMATED HORIZONTAL  
POSITIONAL ACCURACY ACHIEVED ARE DERIVED FROM  
CONVENTIONAL SURVEY OBSERVATIONS TO GEODETIC  
CONTROL MONUMENTS 5068 AND 5819

THIS PLAN SHOWS HORIZONTAL GROUND-LEVEL  
DISTANCES UNLESS OTHERWISE SPECIFIED.  
TO COMPUTE GRID DISTANCES,  
MULTIPLY GROUND-LEVEL DISTANCES BY THE  
AVERAGE COMBINED FACTOR 0.9995982 WHICH  
HAS BEEN DERIVED FROM GEODETIC CONTROL MONUMENTS  
5068 AND 5819

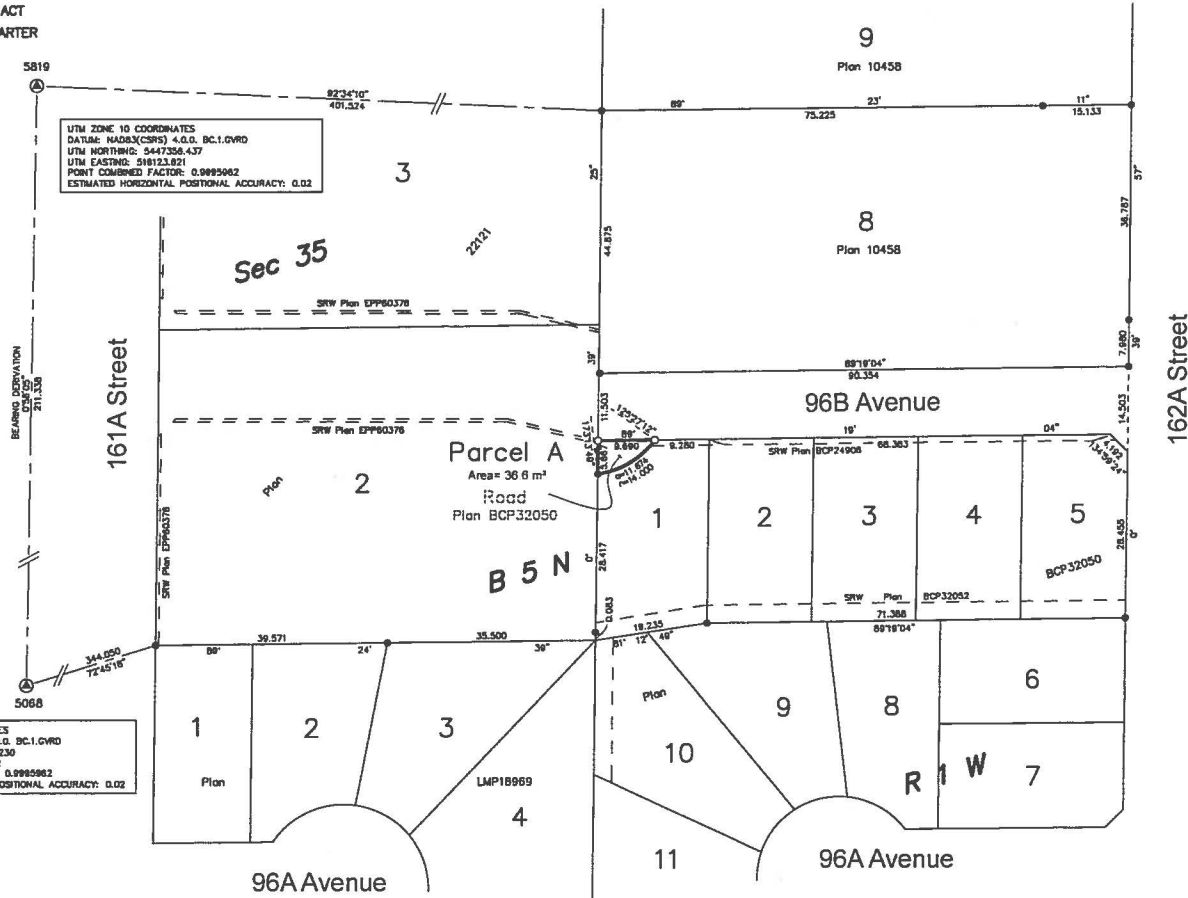
- ⊙ INDICATES CONTROL MONUMENT FOUND
- INDICATES STANDARD IRON POST FOUND
- INDICATES STANDARD IRON POST PLACED



UTM ZONE 10 COORDINATES  
DATUM: NAD83(CSRS) 4.0.0 BC.1.0VRD  
UTM NORTHING: 5447145.230  
UTM EASTING: 516120.032  
POINT COMBINED FACTOR: 0.9995982  
ESTIMATED HORIZONTAL POSITIONAL ACCURACY: 0.02

UTM ZONE 10 COORDINATES  
DATUM: NAD83(CSRS) 4.0.0 BC.1.0VRD  
UTM NORTHING: 5447358.437  
UTM EASTING: 516123.821  
POINT COMBINED FACTOR: 0.9995982  
ESTIMATED HORIZONTAL POSITIONAL ACCURACY: 0.02

H.Y. AND ASSOCIATES  
LAND SURVEYING LTD.  
200, 8128 - 152nd STREET  
SURREY, B.C. V3R 4E7  
Ph: (604)583-1616  
Fax: 092834F\_583.DWG



THIS PLAN LIES WITHIN THE GREATER VANCOUVER  
REGIONAL DISTRICT - CITY OF SURREY

THE FIELD SURVEY REPRESENTED BY THIS PLAN  
WAS COMPLETED ON THE 14th DAY OF MARCH, 2016  
EUGENE WONG, BCLS 718