

CITY OF SURREY

BYLAW NO. 18720

A Bylaw to close and to remove the dedication
of a highway of portions of road

.....

WHEREAS pursuant to Subsection 40(1)(a) of the *Community Charter*, S.B.C. 2003, c. 26, the Council may, by bylaw, close all or part of a highway that is vested in the municipality to all or some types of traffic;

AND WHEREAS pursuant to Section 40(2) of the *Community Charter*, S.B.C. 2003, c. 26, the Council may, by bylaw, remove the dedication of a highway that has been closed by a bylaw under Subsection 40(1)(a).

NOW, THEREFORE the Council of the City of Surrey ENACTS as follows:

1. That portion of Section 25 Block 5 North Range 1 West New Westminster District dedicated by Plan 45831 shown outlined in heavy black line on a Reference Plan EPP66814 attached hereto, prepared by Sean Costello, B.C.L.S. on the 23rd day of January, 2017, and described as follows:

that portion of road containing 12.5 square meters and labeled Parcel A;

(hereinafter referred to as that portion of Road)

shall be closed to traffic.

2. The dedication as highway be removed of said portion of Road.
3. This Bylaw may be cited for all purposes as "Surrey Close and Remove the Dedication of Highway of a Portion of Road Adjacent to 10309 Parkview Place Bylaw, 2017, No. 18720".

PASSED FIRST READING on the 20th day of February, 2017.

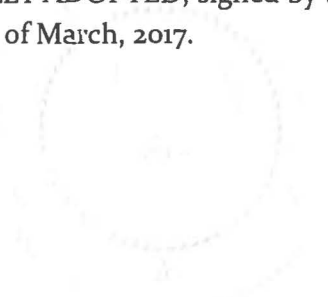
PASSED SECOND READING on the 20th day of February, 2017.

PASSED THIRD READING on the 20th day of February, 2017.

RECEIVED APPROVAL FROM THE MINISTRY OF TRANSPORTATION AND INFRASTRUCTURE
on the 28th day of February, 2017

RECONSIDERED AND FINALLY ADOPTED, signed by the Mayor and Clerk, and sealed with the
Corporate Seal on the 6th day of March, 2017.

_____ MAYOR


Jane Sullivan CLERK

**REFERENCE PLAN TO ACCOMPANY CITY OF SURREY HIGHWAY DEDICATION
CANCELLATION BYLAW NO. 18720 COVERING ROAD SHOWN ON PLAN 45831
SECTION 25 BLOCK 5 NORTH RANGE 1 WEST NEW WESTMINSTER DISTRICT**

PLAN EPP66814

City of Surrey BCOS 83C.017
Pursuant to Section 190 of the Land Title Act
and Section 40 of the Community Charter



SCALE = 1 : 500
All distances in metres

The intended plan size of this plan is 850mm
in width by 560mm in height (A1 size) when
printed at a scale of 1:500.

Integrated Survey Year No. 1
City of Surrey MANDS (2015) + O.D.I.R. (2016)

GNSS readings are received from differential dual frequency
GNSS observations and are referred to the Canadian
mean of ITRF 2011 (1327 95). The horizontal
accuracy of GPS baseline measurements is 2 centimetres.

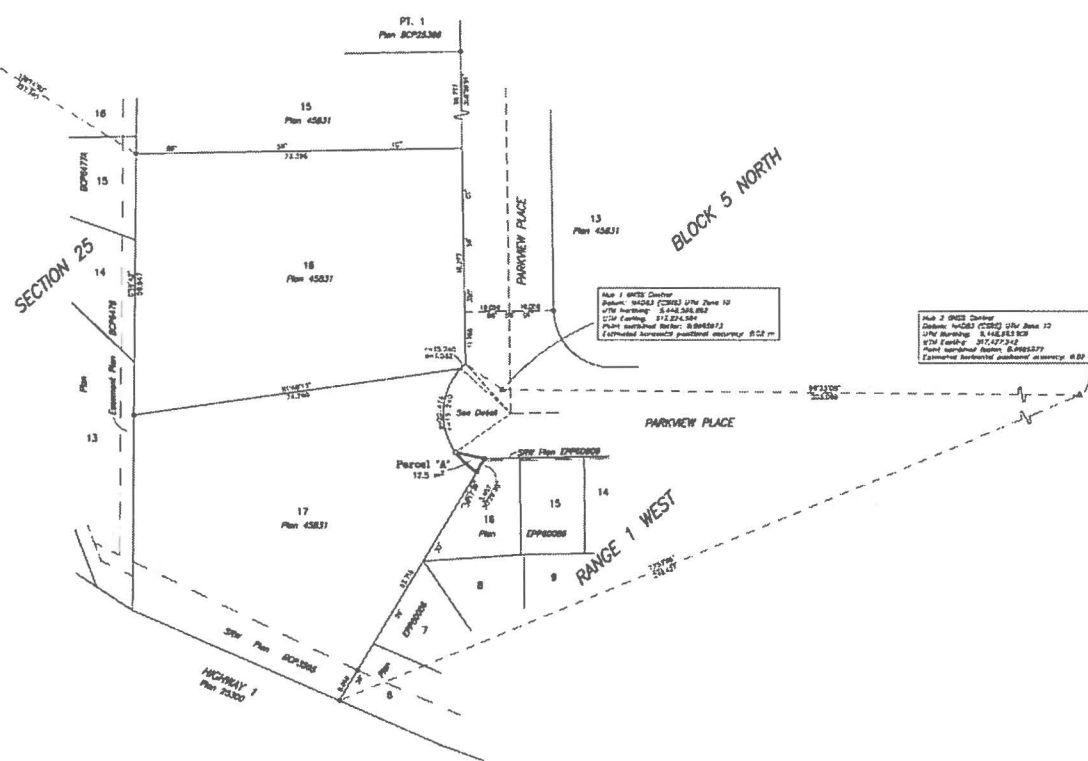
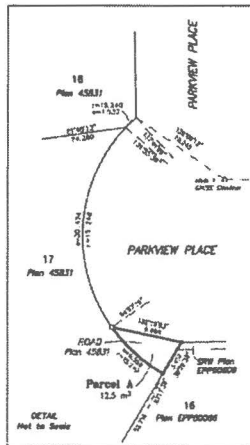
The ITRF co-ordinates and estimated horizontal
positioned accuracy obtained are derived from dual
frequency GNSS observations to geoid height
reduction 8197.

This plan shows horizontal ground-level distances
except where otherwise noted. To compute grid
distances, multiply ground-level distances by the
average projected factor of 0.9999705 which has
been derived from geoid height datum 8197.
The average combined factor has been determined
based on a mean unslanted direction of 41.35
metres.

Legend:

- ⊙ Denotes control monument found
- Denotes abandoned iron post found
- Denotes abandoned iron stud and
- △ Denotes GNSS survey control point
- PT Denotes post

Note: Some symbols and lines have
been suppressed for clarity.



Cameron Land Surveying Ltd.
B.C. Land Surveyors
Unit 205 - 16005 Fraser Highway
Surrey, B.C. V4W 0Z2
Phone: 604-587-1777
Fax: 604-587-3783
Toll: 1-822-4422

The field survey represented by this plan was
completed on the 23rd day of January, 2017.
Sean Costello, BCLS 890

This plan lies within the Greater Vancouver Regional District