

CITY OF SURREY

BYLAW NO. 18663

A Bylaw to close and to remove the dedication
of a highway of portions of road

.....

WHEREAS pursuant to Subsection 40(1)(a) of the *Community Charter*, S.B.C. 2003, c. 26, the Council may, by bylaw, close all or part of a highway that is vested in the municipality to all or some types of traffic;

AND WHEREAS pursuant to Section 40(2) of the *Community Charter*, S.B.C. 2003, c. 26, the Council may, by bylaw, remove the dedication of a highway that has been closed by a bylaw under Subsection 40(1)(a).

NOW, THEREFORE the Council of the City of Surrey ENACTS as follows:

1. That portion of Section 15 Township 2 New Westminster District dedicated by Plan 19283 shown outlined in heavy black line on a Reference Plan EPP48919 attached hereto, prepared by Sandra A. Wards, B.C.L.S. on the 26th day of February, 2016, and described as follows:
 - a. that portion of road containing 136.4 square metres and labeled Parcel A;

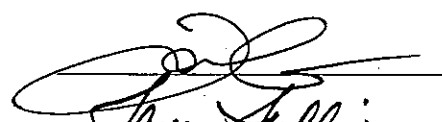
(hereinafter referred to as that portion of Road)shall be closed to traffic.
2. The dedication as highway be removed of said portion of Road.
3. This Bylaw may be cited for all purposes as "Surrey Close and Remove the Dedication of Highway of a Portion of Road Adjacent to 14433 and 14455 - 70A Avenue and 7053 - 144A Street Bylaw, 2016, No. 18663".

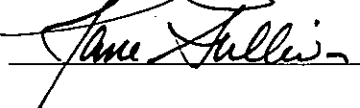
PASSED FIRST READING on the 11th day of April, 2016.

PASSED SECOND READING on the 11th day of April, 2016.

PASSED THIRD READING on the 11th day of April, 2016.

RECONSIDERED AND FINALLY ADOPTED, signed by the Mayor and Clerk, and sealed with the Corporate Seal on the 9th day of May, 2016.


ACTING
MAYOR


CLERK

REFERENCE PLAN OF PART OF LANE IN SECTION 15 TOWNSHIP 2 NEW WESTMINSTER DISTRICT DEDICATED ON PLAN 19283 TO ACCOMPANY CITY OF SURREY HIGHWAY DEDICATION CANCELLATION BY-LAW NO. 18663
 Pursuant to Section 140 of the Community Charter and Section 120 of the Land Title Act BCGS 92G.016

All distances are in metres and decimals thereof.

The intended plot size of this plan is 854mm in width by 580mm in height (D size) when plotted at a scale of 1:250.

Integrated Survey Area No. 1, Municipality of Surrey, HA083 (CRS) 4.0.0.BC.1.GRA1

Grid bearings are derived from observations between geodetic control monuments 8815 and 5451.

The UTM coordinates and estimated horizontal positional accuracy achieved are derived from MAGNET published coordinates and standard deviations for geodetic control monuments 8815 and 5451.

This plan shows horizontal ground-level distances unless otherwise specified. To compute grid distances, multiply ground-level distances by the average combined factor of 0.999944 which has been derived from geodetic control monument 8815.

This plan shows one or more witness posts which are not set on the true corner(s).

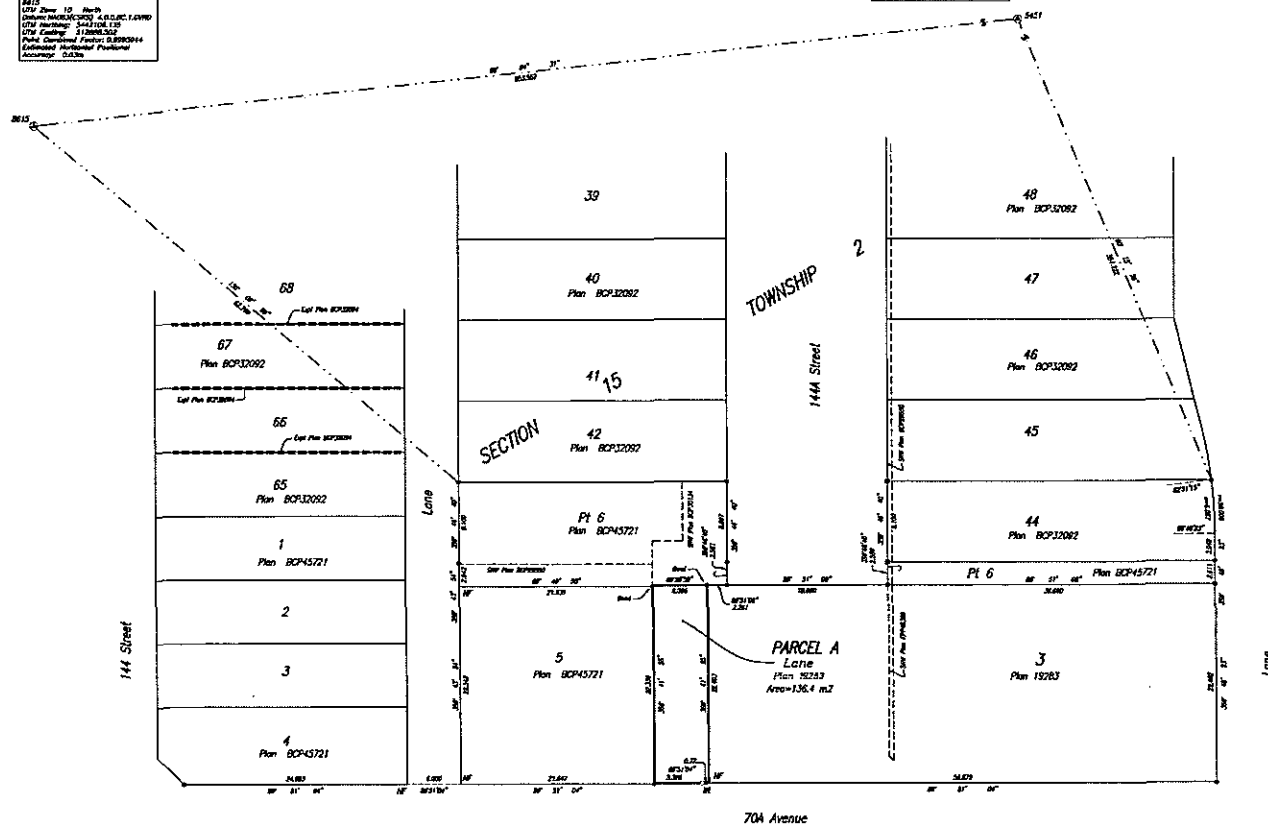
Some lines and symbols may be exaggerated for clarity.

LEGEND

- ⊙ denotes control monument found
- denotes standard iron post found
- denotes lead plug found
- denotes standard iron post placed
- ⊙ denotes traverse hub placed
- STW denotes Statutory Right of Way
- ND denotes Nothing Found
- E/x denotes Explanatory
- m2 denotes metres squared
- WT denotes Witness

8815
 UTM Zone 18 North
 Datum: NAD83(CRS) 4.0.0.BC.1.GRA1
 UTM Northing: 541228.120
 UTM Easting: 112888.532
 Point Geoidal Height: 0.999944
 Estimated Horizontal Positional Accuracy: 0.20m

5451
 UTM Zone 18 North
 Datum: NAD83(CRS) 4.0.0.BC.1.GRA1
 UTM Northing: 542338.089
 UTM Easting: 112928.716
 Point Geoidal Height: 0.999944
 Estimated Horizontal Positional Accuracy: 0.20m



704 Avenue

WSP
 WSP Survey (BC) Limited Partnership
 200-10 Richmond St., New Westminster, BC
 V3A 4P5
 1-800-955-5555
 010049480 SDRFD1 R01

This plan lies within the Greater Vancouver Regional District - City of Surrey.
 The field survey represented by this plan was completed on the 25th day of February, 2016.
 Sandra A. Ward, E.C.S. 834
 ECF/ 184068
 February 26, 2016