

CITY OF SURREY

BYLAW NO. 18662

A Bylaw to close and to remove the dedication
of a highway of portions of road
.....

WHEREAS pursuant to Subsection 40(1)(a) of the *Community Charter*, S.B.C. 2003, c. 26, the Council may, by bylaw, close all or part of a highway that is vested in the municipality to all or some types of traffic;

AND WHEREAS pursuant to Section 40(2) of the *Community Charter*, S.B.C. 2003, c. 26, the Council may, by bylaw, remove the dedication of a highway that has been closed by a bylaw under Subsection 40(1)(a).

NOW, THEREFORE the Council of the City of Surrey ENACTS as follows:

1. That portion of Section 25 Block 5 North Range 1 West New Westminster District dedicated by Plan LMP19984 shown outlined in heavy black line on a Reference Plan EPP57916 attached hereto, prepared by Zuzana Fulkova, B.C.L.S. on the 8th day of December, 2015, and described as follows:

that portion of road containing 381.5 square meters and labeled Parcel A;

(hereinafter referred to as that portion of Road)

shall be closed to traffic.
2. The dedication as highway be removed of said portion of Road.
3. This Bylaw may be cited for all purposes as "Surrey Close and Remove the Dedication of Highway of a Portion of Road Adjacent to 16616 Parkview Place, 16609 and 16618 - 102 Avenue Bylaw, 2016, No. 18662".

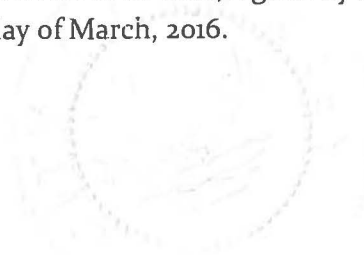
PASSED FIRST READING on the 22nd day of February, 2016.

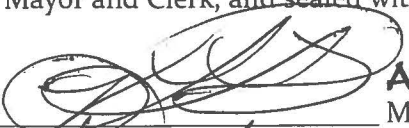
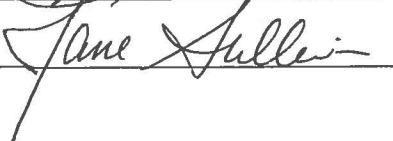
PASSED SECOND READING on the 22nd day of February, 2016.

PASSED THIRD READING on the 22nd day of February, 2016.

RECEIVED APPROVAL FROM THE MINISTRY OF TRANSPORTATION AND INFRASTRUCTURE on the 2nd day of March, 2016.

RECONSIDERED AND FINALLY ADOPTED, signed by the Mayor and Clerk, and sealed with the Corporate Seal on the 7th day of March, 2016.




ACTING
MAYOR

CLERK

**REFERENCE PLAN TO ACCOMPANY BYLAW NO. 18662 (CITY OF SURREY)
TO CLOSE PART OF ROAD DEDICATED ON PLAN LMP19984, SECTION 25,
BLOCK 5 NORTH, RANGE 1 WEST, NEW WESTMINSTER DISTRICT**

PLAN EPP57916

BCGS 92G.017

PURSUANT TO SECTION 120 OF THE LAND TITLE ACT AND
SECTION 40 OF THE COMMUNITY CHARTER

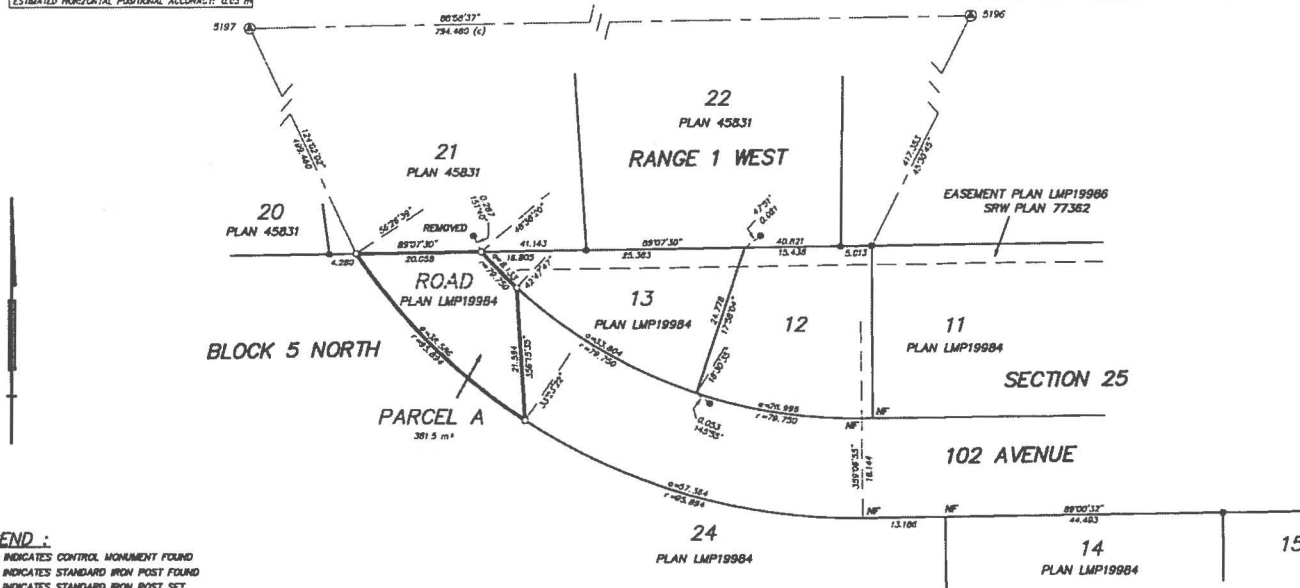


ALL DISTANCES ARE IN METRES

THE INTENDED PLOT SIZE OF THIS PLAN IS 558mm IN WIDTH BY 432mm IN HEIGHT
(USE C SIZE SHEET) WHEN PLOTTED AT A SCALE OF 1:500

Datum: NAD83(CSRS) + G.D.B.C.I.G.VRD
UTM ZONE 18
NORTHING: 5448785.36 m
EASTING: 218548.44 m
POINT COMBINED SCALE FACTOR: 0.999589
ESTIMATED HORIZONTAL POSITIONAL ACCURACY: 0.03 m

Datum: NAD83(CSRS) + G.D.B.C.I.G.VRD
UTM ZONE 18
NORTHING: 5448785.36 m
EASTING: 217743.43 m
POINT COMBINED SCALE FACTOR: 0.9995978
ESTIMATED HORIZONTAL POSITIONAL ACCURACY: 0.04 m



LEGEND :

- ⊙ INDICATES CONTROL MONUMENT FOUND
- INDICATES STANDARD IRON POST FOUND
- INDICATES STANDARD IRON POST SET

INTEGRATED SURVEY AREA No.1, CITY OF SURREY, NAD83 (CSRS) + G.D.B.C.I.G.VRD

GRID BEARINGS ARE DERIVED FROM OBSERVATIONS BETWEEN
GEODETIC CONTROL MONUMENTS 5188 AND 5197.

THIS PLAN SHOWS HORIZONTAL GROUND-LEVEL DISTANCES
UNLESS OTHERWISE SPECIFIED. TO COMPUTE GRID DISTANCES,
MULTIPLY GROUND-LEVEL DISTANCES BY THE COMBINED
FACTOR OF 0.999589 WHICH HAS BEEN DERIVED FROM GEODETIC CONTROL MONUMENT 5187

MURRAY & ASSOCIATES
201-12448 82nd AVENUE
SURREY, B.C.
V3W 3E3
(604) 592-9189

**THIS PLAN LIES WITHIN THE GREATER VANCOUVER REGIONAL DISTRICT
(CITY OF SURREY)**

THE FIELD SURVEY REPRESENTED BY THIS PLAN WAS COMPLETED
ON THE 8TH DAY OF DECEMBER, 2015
ZUZANA FULKOVA, BCL5 944

FILE 10155-06