

CITY OF SURREY

BYLAW NO. 18660

A Bylaw to close and to remove the dedication
of a highway of portions of road
.....

WHEREAS pursuant to Subsection 40(1)(a) of the *Community Charter*, S.B.C. 2003, c. 26, the Council may, by bylaw, close all or part of a highway that is vested in the municipality to all or some types of traffic;

AND WHEREAS pursuant to Section 40(2) of the *Community Charter*, S.B.C. 2003, c. 26, the Council may, by bylaw, remove the dedication of a highway that has been closed by a bylaw under Subsection 40(1)(a).

NOW, THEREFORE the Council of the City of Surrey ENACTS as follows:

1. That portion of Section 15 Township 8 New Westminster District dedicated by Plan 54452 shown outlined in heavy black line on a Reference Plan EPP55329 attached hereto, prepared by Mark Adam Fulkerson, B.C.L.S. on the 16th day of September, 2015, and described as follows:

that portion of road containing 82.5 square meters and labeled Parcel A;

(hereinafter referred to as that portion of Road)

shall be closed to traffic.

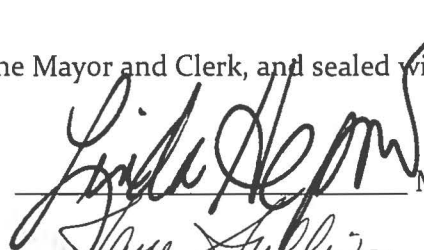
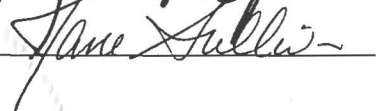
2. The dedication as highway be removed of said portion of Road.
3. This Bylaw may be cited for all purposes as "Surrey Close and Remove the Dedication of Highway of a Portion of Road Adjacent to 19289 – 71 Avenue Bylaw, 2016, No. 18660".

PASSED FIRST READING on the 22nd day of February, 2016.

PASSED SECOND READING on the 22nd day of February, 2016.

PASSED THIRD READING on the 22nd day of February, 2016

RECONSIDERED AND FINALLY ADOPTED, signed by the Mayor and Clerk, and sealed with the Corporate Seal on the 7th day of March, 2016.


MAYOR

CLERK



REFERENCE PLAN TO ACCOMPANY THE CITY OF SURREY HIGHWAY DEDICATION CANCELLATION BYLAW NO:18660 OF A PORTION OF ROAD DEDICATED BY PLAN 54452 SEC 15 TP 8 NWD

PLAN EPP55329

LEGEND
 (S) DITCHES CONTROL WORKMARK FOUND
 (D) DITCHES STAGNANT IRON POST FOUND
 (C) DITCHES STAGNANT IRON POST SET
 (P) DITCHES STAGNANT IRON POST FOUND
 (M) DITCHES WOODS
 (S.M) DITCHES STAGNANT IRON POST
 (R.P) DITCHES NOT STAGNANT IRON POST

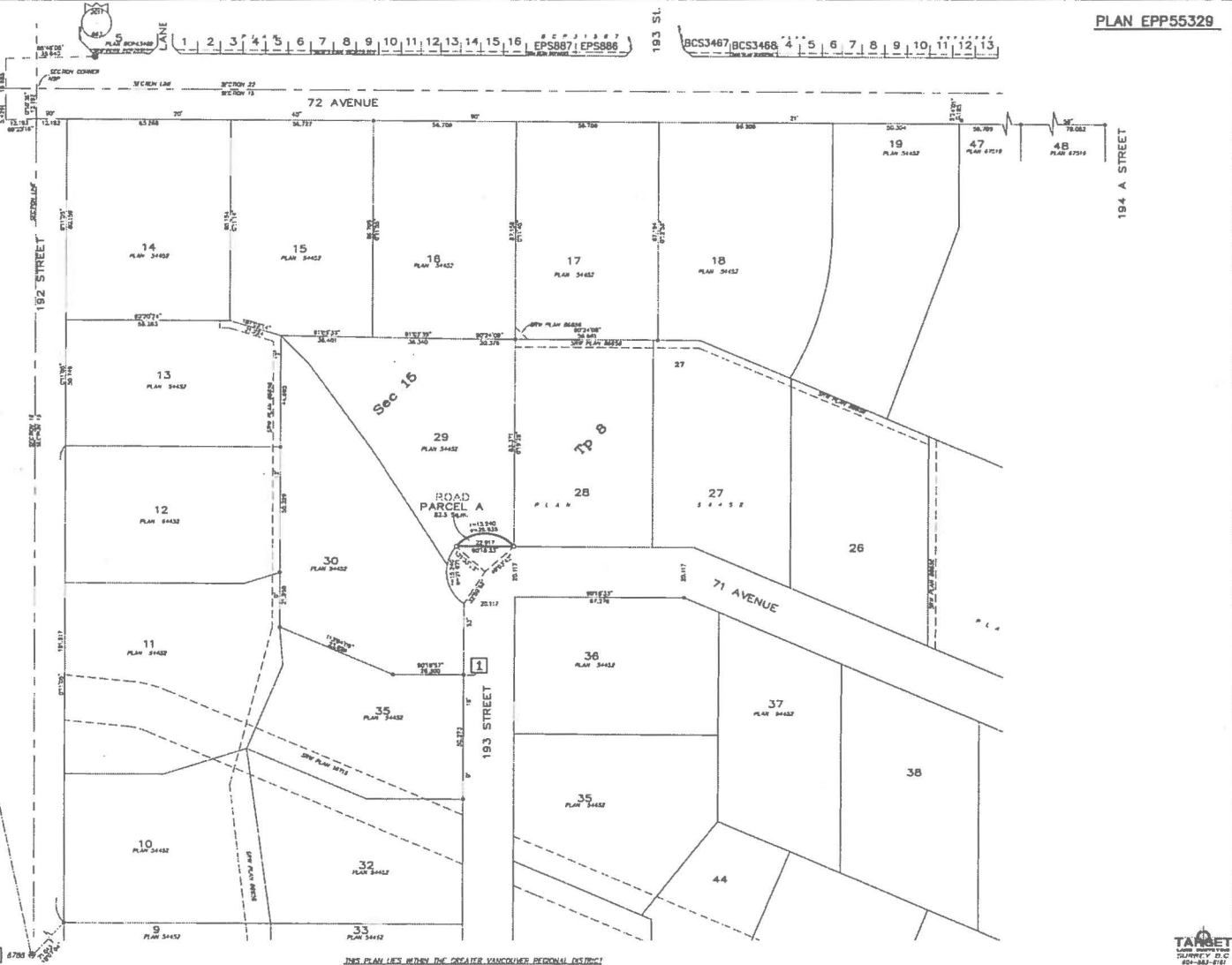
SCALE 1 : 750
 0 5 10 20 30
 METERS

UNIMPROVED SURVEY AREA No. 1, SURREY
 ROAD AS (FCRU) & (S.B.C.) C.D.M.
 This boundary was derived from conventional survey observations in which measurements of 75m and 27m and any other in the order of 100m (Plan 12.1). The 1/4" for coordinates and estimated horizontal positional accuracy achieved are derived from the above mentioned survey observations.
 This plan shows horizontal ground-level distances unless otherwise specified. To compare with distances, measure ground-level distances by the survey contractor before of 1/8" (1:250), which has been derived from the earlier monuments listed above.

1
 Datum: NAD 83 (CSRS) & (S.B.C.) C.D.M.
 UTM Zone: 18 U
 UTM Coordinates:
 N: 544497.17
 E: 222728.89
 Point combined scale factor: 0.9999982
 Estimated horizontal positional accuracy: +/- 0.02

2
 Datum: NAD 83 (CSRS) & (S.B.C.) C.D.M.
 UTM Zone: 18 U
 UTM Coordinates:
 N: 544497.17
 E: 222728.89
 Point combined scale factor: 0.9999982
 Estimated horizontal positional accuracy: +/- 0.02

This plan lies within the jurisdiction of the Appraising Officer for the City of Surrey.
 The field survey represented by this plan was completed on the 18th day of September, 2015.
 M. Adam Peterson, S.L.S. 504



THIS PLAN LIES WITHIN THE GREATER VANCOUVER REGIONAL DISTRICT

