

CITY OF SURREY

BYLAW NO. 18478

A Bylaw to close and to remove the dedication
of a highway of portions of road
.....

WHEREAS pursuant to Subsection 40(1)(a) of the *Community Charter*, S.B.C. 2003, c. 26, the Council may, by bylaw, close all or part of a highway that is vested in the municipality to all or some types of traffic;

AND WHEREAS pursuant to Section 40(2) of the *Community Charter*, S.B.C. 2003, c. 26, the Council may, by bylaw, remove the dedication of a highway that has been closed by a bylaw under Subsection 40(1)(a).

NOW, THEREFORE the Council of the City of Surrey ENACTS as follows:

1. That portion of Block 9 Section 22 Block 5 North, Range 1 West, New Westminster District dedicated by Plan 1832 shown outlined in heavy black line on a Reference Plan EPP50131 attached hereto, prepared by Sean Costello, B.C.L.S. on the 11th day of July, 2015, and described as follows:
 - a. that portion of road containing 186.0 square meters and labeled Parcel A; and
 - b. that portion of road containing 216.4 square meters and labelled Parcel Bshall be closed to traffic.
2. The dedication as highway be removed of said portion of Road.
3. This Bylaw may be cited for all purposes as "Surrey Close and Remove the Dedication of Highway of a Portion of Road Adjacent to 15685 – 106A Avenue Bylaw, 2015, No. 18478".

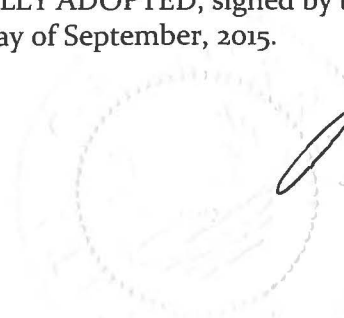
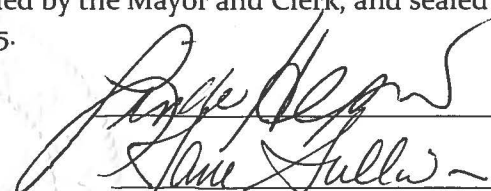
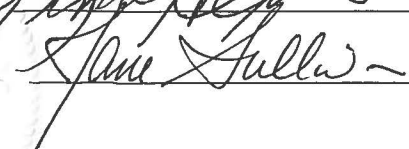
PASSED FIRST READING on the 27th day of July, 2015.

PASSED SECOND READING on the 27th day of July, 2015.

PASSED THIRD READING on the 27th day of July, 2015.

RECEIVED APPROVAL FROM THE MINISTRY OF TRANSPORTATION AND INFRASTRUCTURE on the 7th day of August, 2015.

RECONSIDERED AND FINALLY ADOPTED, signed by the Mayor and Clerk, and sealed with the Corporate Seal on the 28th day of September, 2015.


 MAYOR
 CLERK

**REFERENCE PLAN TO ACCOMPANY CITY OF SURREY HIGHWAY DEDICATION
CANCELLATION BYLAW NO. 18478 COVERING ROAD SHOWN ON PLAN 1832
BLOCK 9, SECTION 22, BLOCK 5 NORTH, RANGE 1 WEST, NEW WESTMINSTER DISTRICT**

PLAN EPP50131

City of Surrey BCGS 92G.017

Pursuant to Section 120 of the Land Title Act and
and Section 40 of the Community Charter.



SCALE - 1 : 500
All distances are in metres

The intended plot size of this plan is 432mm
in width by 580mm in height (C Size) when
plotted at a scale of 1:500

**Integrated Survey Area No. 1
City of Surrey NAD83 (CSRS) 4.0.0.BC.1.GVRD**

Grid Bearings are derived from observations between
Control Monument 5280 & 5283

The UTM coordinates and estimated horizontal positional
accuracy achieved are derived from conventional survey
observations to geodetic control monuments 5280 and 5283

This plan shows horizontal ground-level distances
unless otherwise specified. To compute grid
distances, multiply ground-level distances by the
average combined factor of 0.9995829 which has
been derived from geodetic control monument 5283

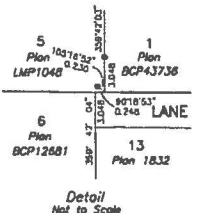
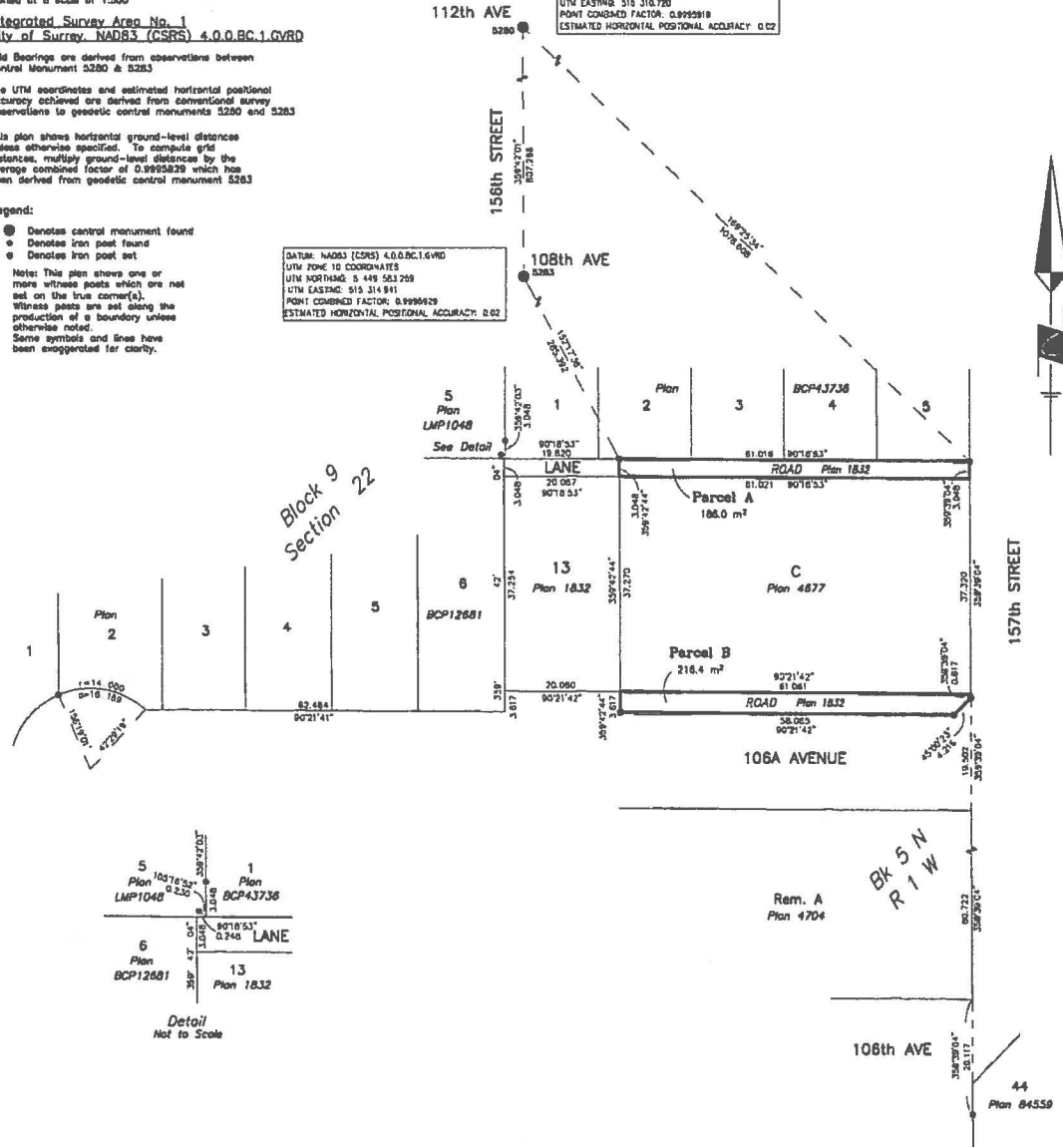
Legend:

- Denotes control monument found
- Denotes iron post found
- ⊙ Denotes iron post set

Note: This plan shows one or
more witness points which are not
set on the true corner(s).
Witness points are set along the
production of a boundary unless
otherwise noted.
Some symbols and lines have
been exaggerated for clarity.

DATUM: NAD83 (CSRS) 4.0.0.BC.1.GVRD
UTM ZONE 10 COORDINATES
UTM NORTHING: 5 448 583 259
UTM EASTING: 515 314 911
POINT CONVERSION FACTOR: 0.9995829
ESTIMATED HORIZONTAL POSITIONAL ACCURACY: 0.02

DATUM: NAD83 (CSRS) 4.0.0.BC.1.GVRD
UTM ZONE 10 COORDINATES
UTM NORTHING: 5 450 390 229
UTM EASTING: 515 310 720
POINT CONVERSION FACTOR: 0.9995818
ESTIMATED HORIZONTAL POSITIONAL ACCURACY: 0.02



Cameron Land Surveying Ltd.
B.C. Land Surveyors
Unit 208 - 18255 Fraser Highway
Surrey, B.C. V4N 0C2
Phone: 604-597-3777
Fax: 604-597-3783
File: 5513-REF

This plan lies within the Greater Vancouver Regional District

The field survey represented by this plan was
completed on the 11th day of July, 2013.
Sean Costello, BCLS 600