

CITY OF SURREY

BYLAW NO. 18422

A Bylaw to close and to remove the dedication  
of a highway of portions of road  
.....

WHEREAS pursuant to Subsection 40(1)(a) of the *Community Charter*, S.B.C. 2003, c. 26, the Council may, by bylaw, close all or part of a highway that is vested in the municipality to all or some types of traffic;

AND WHEREAS pursuant to Section 40(2) of the *Community Charter*, S.B.C. 2003, c. 26, the Council may, by bylaw, remove the dedication of a highway that has been closed by a bylaw under Subsection 40(1)(a).

NOW, THEREFORE the Council of the City of Surrey ENACTS as follows:

1. That portion of Section 22 Block 5 North Range 1 West New Westminster District shown outlined in heavy black line on a Reference Plan EPP45969 attached hereto and labeled Parcel A, prepared by Mike Bernemann, B.C.L.S. on the 20th day of February, 2015, and described as follows:

that portion of road dedicated on Plan 1832 containing 252.1 square metres

(hereinafter referred to as that portion of Road)

shall be closed to traffic.

2. The dedication as highway be removed of said portion of Road.
3. This Bylaw may be cited for all purposes as "Surrey Close and Remove the Dedication of Highway of a Portion of Road Adjacent to 15815 and 15825 – 105A Avenue Bylaw, 2015, No. 18422".

PASSED FIRST READING on the 13th day of April 2015.

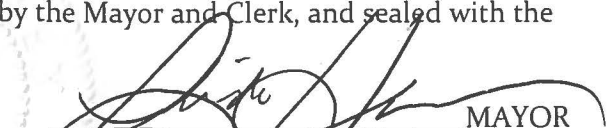
PASSED SECOND READING on the 13th day of April, 2015.


PASSED THIRD READING on the 13th day of April, 2015.

NOTICE OF INTENTION ADVERTISED on the 17th and 24th day of April 2015, in the PEACE ARCH and SURREY LEADER newspapers.

RECEIVED APPROVAL FROM THE MINISTRY OF TRANSPORTATION AND INFRASTRUCTURE on the 17th day of April, 2015

RECONSIDERED AND FINALLY ADOPTED, signed by the Mayor and Clerk, and sealed with the Corporate Seal on the 27th day of April, 2015.

  
MAYOR

  
CLERK

REFERENCE PLAN TO ACCOMPANY CITY OF SURREY HIGHWAY DEDICATION CANCELLATION  
 BYLAW NUMBER 18422 OF A PORTION OF ROAD LYING IN SECTION 22  
 BLOCK 5 NORTH RANGE 1 WEST NEW WESTMINSTER DISTRICT DEDICATED BY PLAN 1832

PLAN EPP45969

PURSUANT TO SECTION 120 LAND TITLE ACT  
 PURSUANT TO SECTION 40 COMMUNITY CHARTER

BCGS 92G.026



The bounded plot size of this plan is 360 mm in width by 432 mm in height  
 (C SIZE) when plotted at a scale of 1:750

Integrated Survey Area No. 1, Surrey, NAD83 (CSRS), 4.0.0.BC.1.GVRD

Grid bearings are derived from observations between geodetic control monuments 5849 and 5277

The UTM coordinates and estimated horizontal positional accuracy achieved are derived from conventional survey observations to geodetic control monuments 5849 and 5277

This plan shows horizontal ground-level distances unless otherwise specified. To compute grid distances, multiply ground-level distances by the average combined factor of 0.9995942 which has been derived from geodetic control monument 5277

LEGEND:

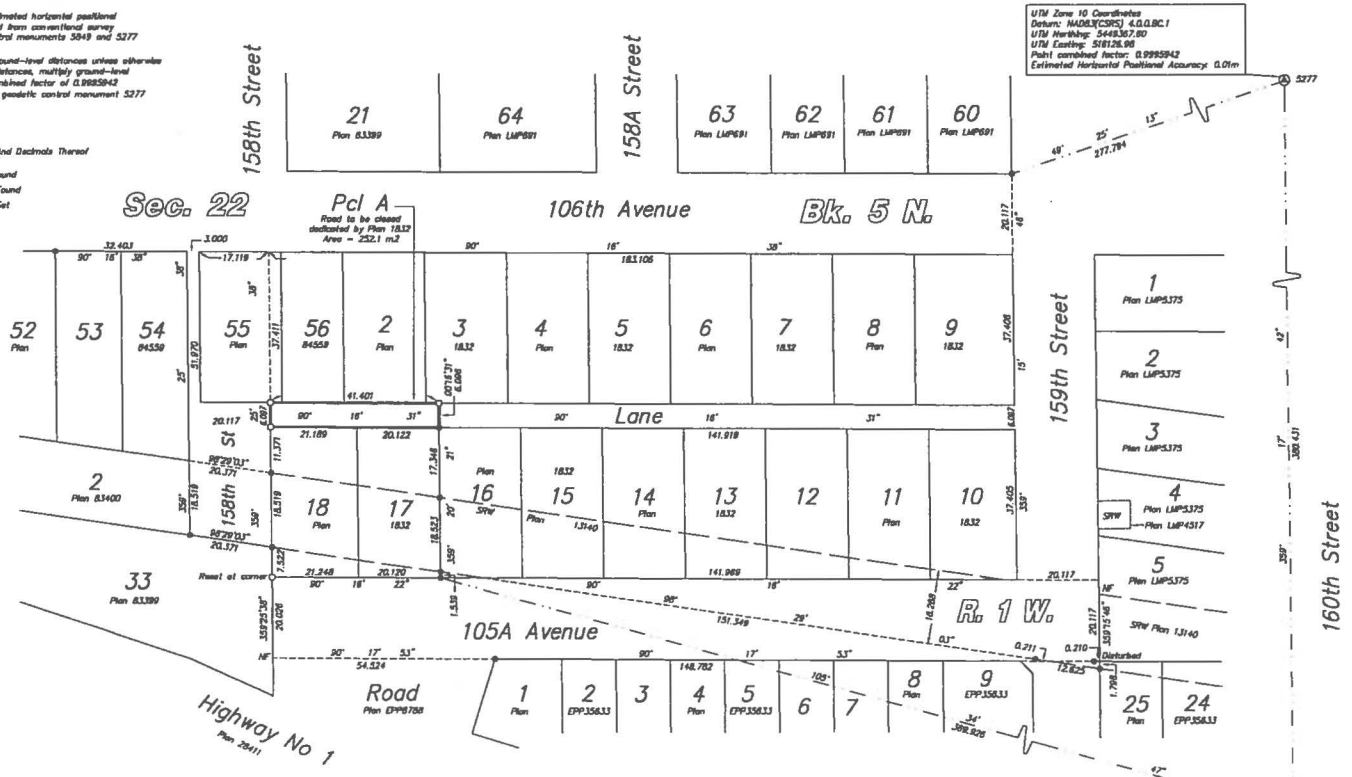
All Distances Are in Metres And Decimals Thereof

- ⊕ Control Monument Found
- Standard Iron Post Found
- Standard Iron Post Set



This plan lies within the  
 Greater Vancouver Regional District

The field survey represented by this plan was  
 completed on the 20th day of February, 2015  
 Mike Garmonera, BCLS 793



UTM Zone 10 Coordinates  
 Datum: NAD83(CSRS) 4.0.0.BC.1  
 UTM Northing: 5448367.80  
 UTM Easting: 518131.68  
 Point combined factor: 0.9995942  
 Estimated Horizontal Positional Accuracy: 0.01m

UTM Zone 10 Coordinates  
 Datum: NAD83(CSRS) 4.0.0.BC.1  
 UTM Northing: 5448887.37  
 UTM Easting: 518131.68  
 Point combined factor: 0.9995957  
 Estimated Horizontal Positional Accuracy: 0.01m