

CITY OF SURREY

BYLAW NO. 18339

A Bylaw to close and to remove the dedication  
of a highway of portions of  
.....

WHEREAS pursuant to Subsection 40(1)(a) of the *Community Charter*, S.B.C. 2003, c. 26, the Council may, by bylaw, close all or part of a highway that is vested in the municipality to all or some types of traffic;

AND WHEREAS pursuant to Section 40(2) of the *Community Charter*, S.B.C. 2003, c. 26, the Council may, by bylaw, remove the dedication of a highway that has been closed by a bylaw under Subsection 40(1)(a).

NOW, THEREFORE the Council of the City of Surrey ENACTS as follows:

1. That portion of road in Section 17 Township 8 New Westminster District, dedicated by Plan EPP32144 shown outlined in heavy black line on Reference Plan EPP46740 attached hereto, prepared by M. Adam Fulkerson, B.C.L.S, on November 13, 2014 and described as follows:

That portion of Road called Parcel A containing 4.5 square metres

2. That portion of road in Section 17 Township 8 New Westminster District, dedicated by Plan EPP32144 shown outlined in heavy black line on Reference Plan EPP46740 attached hereto, prepared by M. Adam Fulkerson, B.C.L.S, on November 13, 2014 and described as follows:

That portion of Road called Parcel B containing 4.5 square metres

(hereinafter referred to as that portion of road)

shall be closed to traffic.

3. The dedication as highway be removed of said portions of road.

4. This Bylaw may be cited for all purposes as "Surrey Close and Remove the Dedication of Highway of a Portion of road Adjacent to 18051 – 66A Avenue and 18058 – 67 Avenue, Bylaw, 2014, No. 18339"

PASSED FIRST READING on the 1st day of December, 2014.

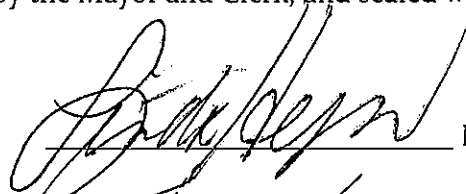
PASSED SECOND READING on the 1st day of December, 2014.

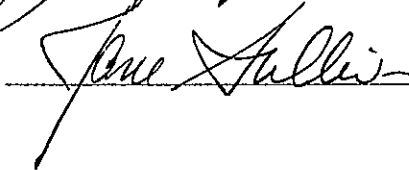
PASSED THIRD READING on the 1st day of December, 2014.

**NOTICE OF INTENTION**

ADVERTISED on the 4th day of December, 2014, in the SURREY NORTH DELTA LEADER and 4th and 11th day of December, 2014 in the SURREY NORTH DELTA LEADER AND PEACE ARCH newspapers.

RECONSIDERED AND FINALLY ADOPTED, signed by the Mayor and Clerk, and sealed with the Corporate Seal on the 15th day of December, 2014.

  
\_\_\_\_\_  
MAYOR

  
\_\_\_\_\_  
CLERK

**REFERENCE PLAN TO ACCOMPANY  
CITY OF SURREY HIGHWAY  
DEDICATION CANCELLATION BYLAW  
NO. 18339, 2014 STOPPING UP  
AND CLOSING PART OF ROAD  
DEDICATED ON PLAN EPP32144,  
SEC 17 TP 8 NWD**

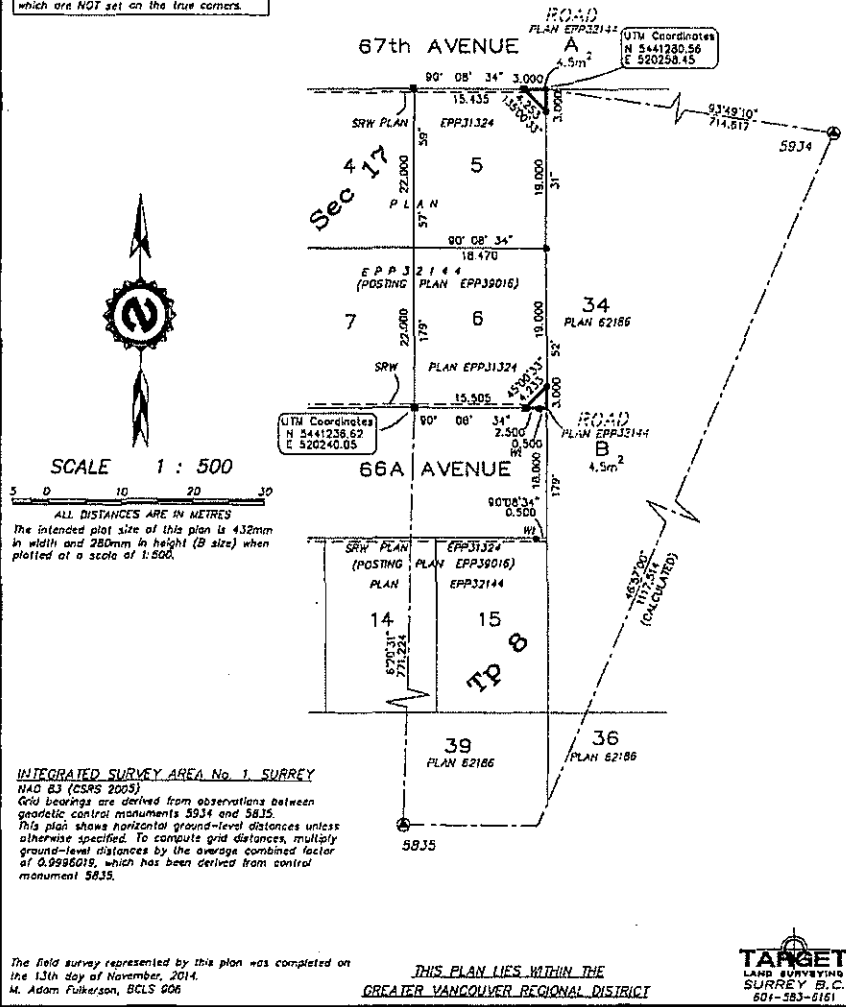
**PLAN EPP46740**

B.C.G.S. 926.017  
PURSUANT TO SECTION 120, LAND TITLE ACT  
PURSUANT TO SECTION 40, COMMUNITY CHARTER

**LEGEND**

- ⊙ DENOTES CONTROL MONUMENT FOUND
- DENOTES STANDARD IRON POST FOUND
- DENOTES STANDARD LEAD PLUG SET
- WI DENOTES WITNESS

Note:  
This plan shows one or more witness posts  
which are NOT set on the true corners.



**INTEGRATED SURVEY AREA No. 1, SURREY**  
NAD 83 (CSRS 2005)  
Grid bearings are derived from observations between  
geodetic control monuments 5934 and 5835.  
This plan shows horizontal ground-level distances unless  
otherwise specified. To compute grid distances, multiply  
ground-level distances by the average combined factor  
of 0.9996019, which has been derived from control  
monument 5835.

The field survey represented by this plan was completed on  
the 13th day of November, 2014.  
M. Adam Fulkerson, BCLS 606

THIS PLAN LIES WITHIN THE  
GREATER VANCOUVER REGIONAL DISTRICT

**TARGET**  
LAND SURVEYING  
SURREY, B.C.  
604-583-6161  
FILE: 0917-HOCL