

CITY OF SURREY

BYLAW NO. 18325

A Bylaw to close and to remove the dedication
of a highway of a portion of lane
.....

WHEREAS pursuant to Subsection 40(1)(a) of the *Community Charter*, S.B.C. 2003, c. 26, the Council may, by bylaw, close all or part of a highway that is vested in the municipality to all or some types of traffic;

AND WHEREAS pursuant to Section 40(2) of the *Community Charter*, S.B.C. 2003, c. 26, the Council may, by bylaw, remove the dedication of a highway that has been closed by a bylaw under Subsection 40(1)(a).

NOW, THEREFORE the Council of the City of Surrey ENACTS as follows:

1. That portion of Section 26 Block 5 North Range 2 West New Westminster District Plan 17951 dedicated as Lane and shown outlined in heavy black line on the reference plan attached hereto, prepared by Gregory Marston, BCLS on the 21st day of November, 2014 and described as follows:

That portion of lane dedicated on Plan EPP 27620 called Parcel A and containing 375.4 square metres.

(hereinafter referred to as that portion of Lane)

shall be closed to traffic.

2. The dedication as highway be removed of said portion of Lane.
3. This Bylaw may be cited for all purposes as "Surrey Close and Remove the Dedication of Highway of a Portion of Lane Adjacent to 10154, 10164 – 139 Street and 13904, 13916 – 102 Avenue, Bylaw, 2015, No. 18325"

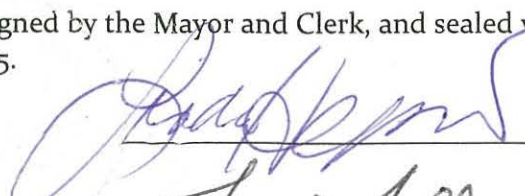
PASSED FIRST READING on the 2nd day of February, 2015.

PASSED SECOND READING on the 2nd day of February, 2015.

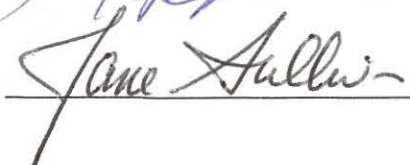
PASSED THIRD READING on the 2nd day of February, 2015.

NOTICE OF INTENTION ADVERTISED on the 12th and 19th day of February, 2015, in the PEACE ARCH and SURREY LEADER newspapers.

RECONSIDERED AND FINALLY ADOPTED, signed by the Mayor and Clerk, and sealed with the Corporate Seal on the 23rd day of February, 2015.



MAYOR

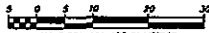


CLERK

REFERENCE PLAN TO ACCOMPANY
CITY OF SURREY HIGHWAY DEDICATION CANCELLATION
BYLAW NO. 18325 OF A PORTION OF
SECTION 26, BLOCK 5 NORTH, RANGE 2 WEST,
NEW WESTMINSTER DISTRICT
SHOWN ROAD ON PLAN 17951

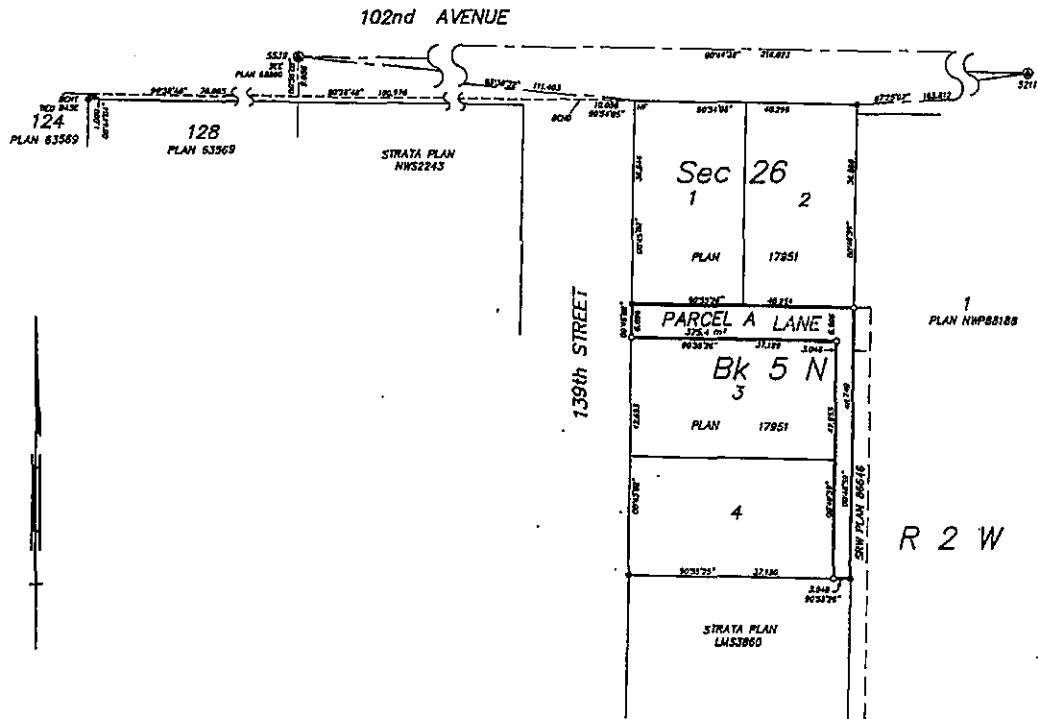
PLAN EPP27620

BCGS 920.016



ALL DISTANCES ARE IN METRES
THE INTENDED PLOT SIZE OF THIS PLAN IS 432mm IN WIDTH BY 580mm IN HEIGHT
(O SIZE) WHEN PLOTTED AT A SCALE OF 1:500

PURSUANT TO SECTION 120 OF THE LAND TITLE ACT AND
SECTION 40 OF THE COMMUNITY CHARTER



LEGEND :

- ⊙ INDICATES CONTROL MONUMENT FOUND
- INDICATES STANDARD IRON POST FOUND
- INDICATES STANDARD IRON POST PLACED

INTEGRATED SURVEY AREA NO. 1, CITY OF SURREY, MAPS (CNS) 4.0.0.0.1.0.0.0
GRID BEARINGS ARE DERIVED FROM OBSERVATIONS BETWEEN
GEODETIC CONTROL MONUMENTS 3211 AND 3212.
THIS PLAN SHOWS HORIZONTAL GROUND-LEVEL DISTANCES
UNLESS OTHERWISE SPECIFIED. TO COMPUTE GRID DISTANCES,
MULTIPLY GROUND-LEVEL DISTANCES BY THE AVERAGE CORRECTION
FACTOR OF 0.99998 WHICH HAS BEEN DERIVED FROM 3211 AND 3212

THIS PLAN LIES WITHIN THE JURISDICTION OF
THE APPROVING OFFICER FOR THE CITY OF SURREY

THE FIELD SURVEY REPRESENTED BY THIS PLAN WAS COMPLETED
ON THE 21ST DAY OF NOVEMBER, 2014
GREGORY MARSTON, BCLS (794)

MURRAY & ASSOCIATES
201-12418 24th AVENUE
SURREY, B.C.
V3W 3G9
(604) 532-3188

THIS PLAN LIES WITHIN THE GREATER VANCOUVER REGIONAL DISTRICT
(CITY OF SURREY)

FILE 9766-04A