

CITY OF SURREY

BYLAW NO. 18288

A Bylaw to close and to remove the dedication
of a highway of a portion of road
.....

WHEREAS pursuant to Subsection 40(1)(a) of the *Community Charter*, S.B.C. 2003, c. 26, the Council may, by bylaw, close all or part of a highway that is vested in the municipality to all or some types of traffic;

AND WHEREAS pursuant to Section 40(2) of the *Community Charter*, S.B.C. 2003, c. 26, the Council may, by bylaw, remove the dedication of a highway that has been closed by a bylaw under Subsection 40(1)(a).

NOW THEREFORE the Council of the City of Surrey ENACTS as follows:

1. That portion of Block 1, Section 9, Township 2, New Westminster District Plan 2840 dedicated as Road, shown outlined in heavy black line on Reference Plan EPP 36417 attached hereto, prepared by Eugene O. Wong, BCLS, on the 9th day of June, 2014 and described as follows:

That portion of Road, called Parcel 1 and containing 527.6 square metres.

(hereinafter referred to as that portion of Road)

shall be closed to traffic.

2. The dedication as highway be removed of said portions of Road.
3. This Bylaw may be cited for all purposes as "Surrey Close and Remove the Dedication of Highway of a Portion of Road Adjacent to 6045 – 138 Street, Bylaw, 2014, No. 18288".

PASSED FIRST READING on the 29th day of September, 2014.

PASSED SECOND READING on the 29th day of September, 2014

PASSED THIRD READING on the 29th day of September, 2014

NOTICE OF INTENTION

ADVERTISED on the 9th and 16th day of October, 2014 in the SURREY/NORTH DELTA LEADER, and PEACE ARCH NEWS newspapers.

RECEIVED APPROVAL FROM THE MINISTRY OF TRANSPORTATION AND INFRASTRUCTURE on the 15th day of October, 2014.

RECONSIDERED AND FINALLY ADOPTED, signed by the Mayor and Clerk, and sealed with the Corporate Seal on the 20th day of October, 2014.



MAYOR



CLERK

REFERENCE PLAN TO ACCOMPANY CITY OF SURREY
 ROAD DEDICATION CANCELLATION BYLAW NO. 18288
 OF A PORTION OF ROAD DEDICATED ON PLAN 2840
 BLOCK 1 SECTION 9 TOWNSHIP 2
 NEW WESTMINSTER DISTRICT

PLAN EPP36417

PURSUANT TO SECTION 120, LAND TITLE ACT
 AND SECTION 40(2) OF THE COMMUNITY CHARTER

BCGS 92G.016

BOOK OF REFERENCE

LEGAL DESCRIPTION	TOTAL AREA
A PORTION OF ROAD DEDICATED ON PLAN 2840 BLOCK 1 SECTION 9 TOWNSHIP 2 NEW WESTMINSTER DISTRICT	577.8 Sq.m.

LEGEND

SCALE 1:500



ALL DISTANCES ARE IN METRES

THE INTENDED PLOT SIZE OF THIS PLAN IS 432m IN HEIGHT BY 360m IN WIDTH (C SIZE) WHEN PRINTED AT A SCALE OF 1:500.

INTEGRATED SURVEY AREA NO. 1
 CITY OF SURREY, BACS (CIRS), 2005

GRID READINGS ARE DERIVED FROM OBSERVATIONS BETWEEN
 GEOMETRIC CONTROL MONUMENTS SHOWN AND SHOWN.

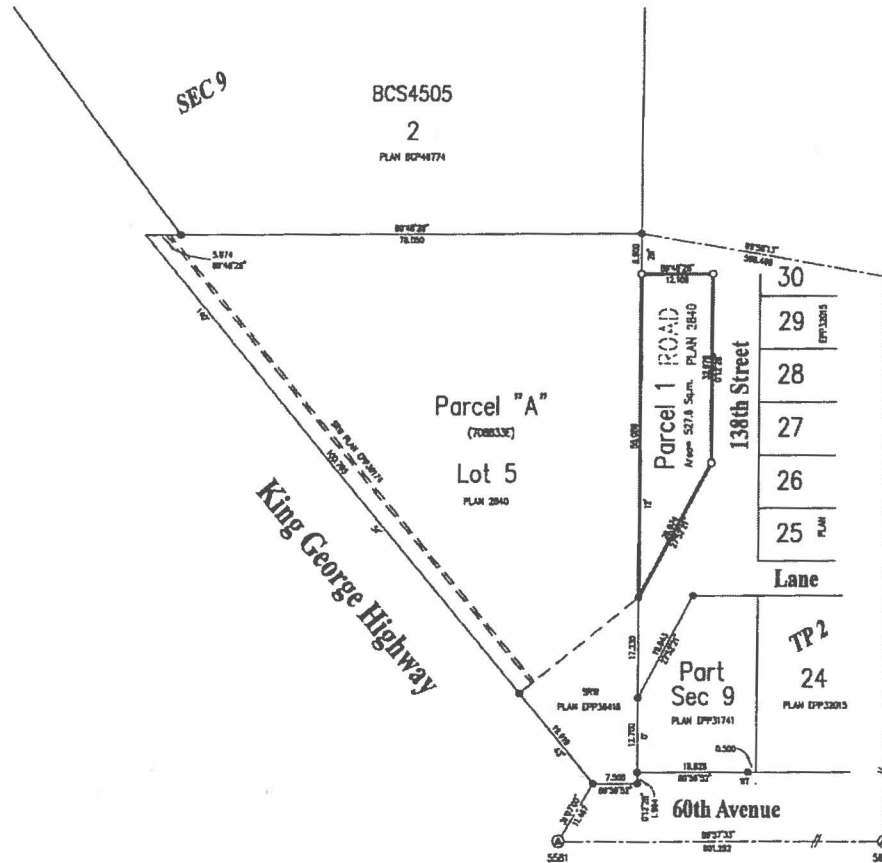
THIS PLAN SHOWS HORIZONTAL, GROUND-LEVEL,
 DISTANCES UNLESS OTHERWISE SPECIFIED. TO COMPUTE
 GRID DISTANCES, MULTIPLY GROUND-LEVEL DISTANCES
 BY ANCHAGE CORRECTION FACTOR OF 0.9999333333 WHICH
 HAS BEEN DERIVED FROM CONTROL MONUMENTS
 SHOWN AND SHOWN.

- ⊙ INDICATES CONTROL MONUMENT FOUND
- ⊙ INDICATES STANDARD BENCH POINT PLACED
- ⊙ INDICATES STANDARD BENCH POINT PLACED
- sq.m. INDICATES SQUARE METRES

THIS PLAN SHOWS ONE OR MORE WITHIN POSTS
 WHICH ARE SET ALONG THE PROJECTION OF THE
 PROPERTY BOUNDARY UNLESS OTHERWISE NOTED.



H.Y. AND ASSOCIATES
 LAND SURVEYING LTD.
 200, 8128 - 152nd Street
 Surrey, B.C.
 V3W 4C7
 (ph): 604-583-1816
 Fax: 123633_592_ROAD.DWG



THIS PLAN LIES WITHIN THE JURISDICTION OF
 THE APPROVING OFFICER FOR THE CITY OF SURREY
 THIS PLAN LIES WITHIN THE
 GREATER VANCOUVER REGIONAL DISTRICT
 CITY OF SURREY
 THE FIELD SURVEY REPRESENTED BY
 THIS PLAN WAS COMPLETED ON
 THE 19th DAY OF JUNE, 2014.
 EUGENE G. WONG, BOLS