

CITY OF SURREY

BYLAW NO. 18072

A Bylaw to close and to remove the dedication
of a highway of a portion of road

.....

WHEREAS pursuant to Subsection 40(1)(a) of the *Community Charter*, S.B.C. 2003, c. 26, the Council may, by bylaw, close all or part of a highway that is vested in the municipality to all or some types of traffic;

AND WHEREAS pursuant to Section 40(2) of the *Community Charter*, S.B.C. 2003, c. 26, the Council may, by bylaw, remove the dedication of a highway that has been closed by a bylaw under Subsection 40(1)(a).

NOW THEREFORE the Council of the City of Surrey, ENACTS as follows:

1. That portion dedicated as Road and shown outlined in heavy black line on Reference Plan EPP33778 attached hereto, prepared by Matthew Onderwater, BCLS, on the 10th day of September, 2013 and described as follows:

That portion of Road in Section 22 Block 5 North, Range 1 West, New Westminster District, dedicated by Plan 1832 and Plan EPP33778 called Parcel 'A' containing 297.7 square metres; and

That portion of Road in Section 23 Block 5 North, Range 1 West, New Westminster District, dedicated by Plan 5447 and Plan EPP33778 called Parcel 'B' containing 288.0 square metres; and

That portion of Road in Section 23 Block 5 North, Range 1 West, New Westminster District, dedicated by Plan 5447 and Plan EPP33778 called Parcel 'C' containing 165.7 square metres; and

(hereinafter referred to as that portion of Road)

shall be closed to traffic.

2. The dedication as highway be removed of said portion of Road.
3. This Bylaw may be cited for all purposes as "Surrey Close and Remove the Dedication of Highway of a Portion of Road Adjacent to 16025 – 104 Avenue, 15810 – 105A Avenue and 10511 – 160 Street, Bylaw, 2013, No. 18072"

PASSED FIRST READING on the 23rd day of September, 2013.

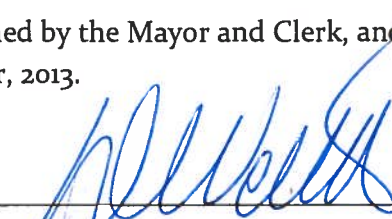
PASSED SECOND READING on the 23rd day of September, 2013.

PASSED THIRD READING on the 23rd day of September, 2013.

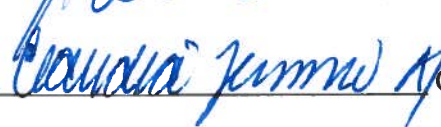
NOTICE OF INTENTION ADVERTISED on the 26th day of September and the 3rd day of October, 2013 in the SURREY/NORTH DELTA LEADER and PEACE ARCH NEWS newspapers.

RECEIVED APPROVAL FROM THE MINISTRY OF TRANSPORTATION AND INFRASTRUCTURE on the 30th day of September, 2013.

RECONSIDERED AND FINALLY ADOPTED, signed by the Mayor and Clerk, and sealed with the Corporate Seal on the 7th day of October, 2013.



MAYOR



CLERK



**REFERENCE PLAN TO ACCOMPANY CITY OF SURREY
HIGHWAY DEDICATION CANCELLATION BYLAW NO.18072
OF PART OF ROAD DEDICATED BY PLAN 1832,
SECTION 22, BLOCK 5 NORTH, RANGE 1 WEST, N.W.D.
AND OF PART OF ROAD DEDICATED BY PLAN 5447,
SECTION 23, BLOCK 5 NORTH, RANGE 1 WEST, N.W.D.**

PLAN EPP33778

PURSUANT TO SECTION 120 OF THE LAND TITLE ACT
PURSUANT TO SECTION 40 OF THE COMMUNITY CHARTER
B.C.G.S. 92C.017



All Distances are in metres.
The intended plot size of this plan is
432mm in width by 560mm in height
(C size) when plotted at a scale of 1:500

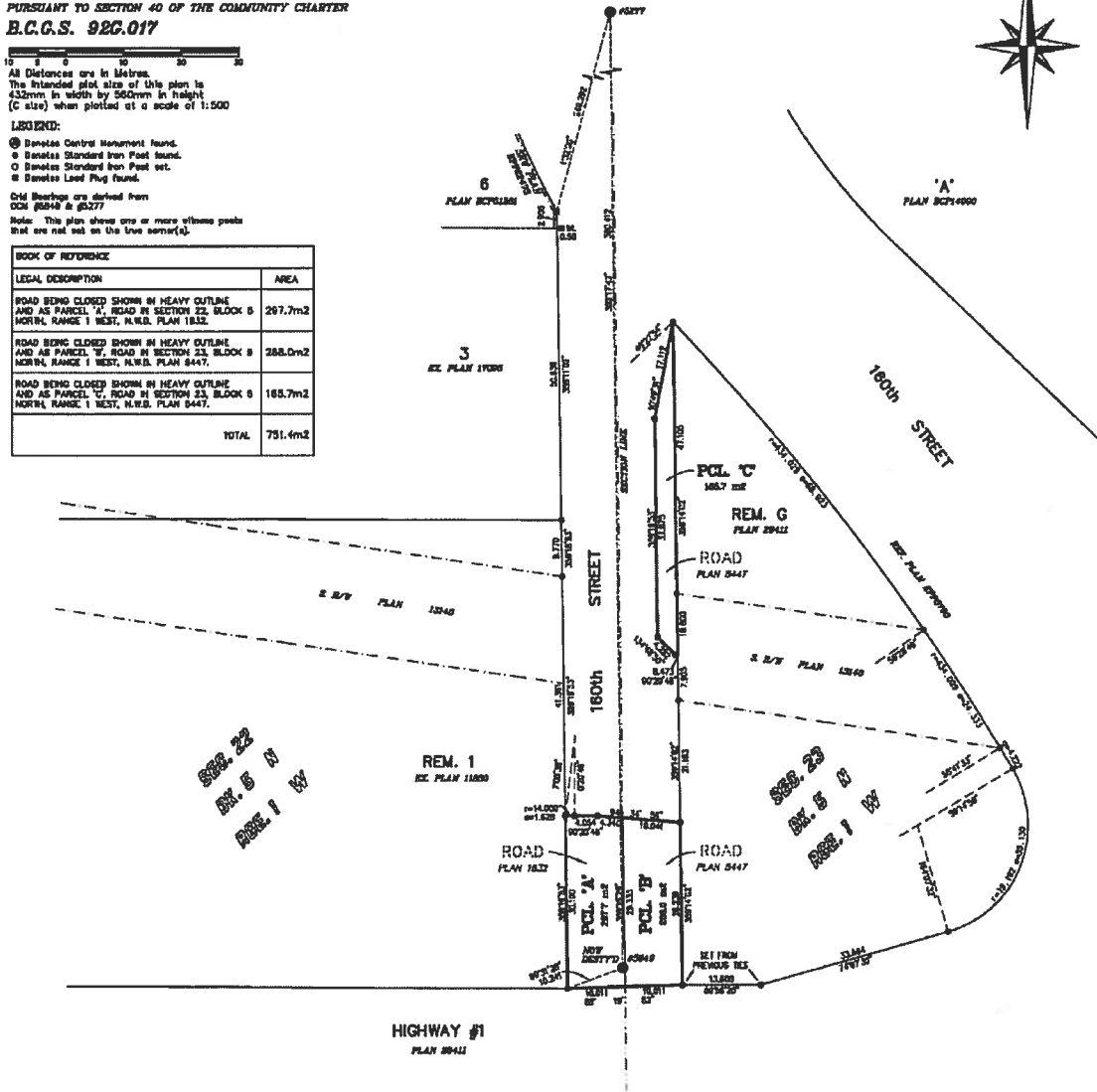
LEGEND:

- ⊙ Denotes Central Monument found.
- ⊙ Denotes Standard Iron Post found.
- Denotes Standard Iron Peg set.
- ⊙ Denotes Lead Plug found.

Old Bearings are derived from
CCM 8844 & 85277

Note: This plan shows one or more offset peaks
that are not set on the true corner(s).

| BOOK OF REFERENCE | |
|--|---------------------------|
| LEGAL DESCRIPTION | AREA |
| ROAD BEING CLOSED SHOWN IN HEAVY OUTLINE AND AS PARCEL 'A', ROAD IN SECTION 22, BLOCK 5 NORTH, RANGE 1 WEST, N.W.D. PLAN 1832. | 267.7m ² |
| ROAD BEING CLOSED SHOWN IN HEAVY OUTLINE AND AS PARCEL 'B', ROAD IN SECTION 23, BLOCK 5 NORTH, RANGE 1 WEST, N.W.D. PLAN 5447. | 288.0m ² |
| ROAD BEING CLOSED SHOWN IN HEAVY OUTLINE AND AS PARCEL 'C', ROAD IN SECTION 23, BLOCK 5 NORTH, RANGE 1 WEST, N.W.D. PLAN 5447. | 165.7m ² |
| TOTAL | 721.4m² |



**Integrated Survey Area No. 1
City of Surrey RADEN (C3882)**
This plan shows horizontal ground-level distances
unless otherwise specified. To compute grid distances,
multiply ground-level distances by the combined
factor of 0.9985057 which has been derived from
control monument 5848.

**Underwater Land Surveying
B.C. Land Surveyors
604-288 1784 Street
Clermonte B.C.
FILE: 21214_PCL**

*This Plan Lies Within The
Greater Vancouver Regional District*

The field survey represented by this plan was
completed on the 4th day of September, 2011.
Matthew C. Underwater, B.C.S. #655