

CITY OF SURREY

BYLAW NO. 18017

A Bylaw to close and to remove the dedication
of a highway of a portion of road

.....

WHEREAS pursuant to Subsection 40(1)(a) of the *Community Charter*, S.B.C. 2003, c. 26, the Council may, by bylaw, close all or part of a highway that is vested in the municipality to all or some types of traffic;

AND WHEREAS pursuant to Section 40(2) of the *Community Charter*, S.B.C. 2003, c. 26, the Council may, by bylaw, remove the dedication of a highway that has been closed by a bylaw under Subsection 40(1)(a).

NOW THEREFORE the Council of the City of Surrey, ENACTS as follows:

1. That portion of road on Plan 1838 Section 17 Township 8 New Westminster District dedicated as Road and shown outlined in heavy black line on Reference Plan EPP31829 attached hereto, prepared by D.J. Dyck, BCLS, on the 19th day of July, 2013 and described as follows:

That portion of Road dedicated by Plan 1838 and Plan EPP31829 containing 610.1 square metres

(hereinafter referred to as that portion of Road)

shall be closed to traffic.

2. The dedication as highway be removed of said portion of Road.
3. This Bylaw may be cited for all purposes as "Surrey Close and Remove the Dedication of Highway of a Portion of Road Adjacent to 17656 – 66A Avenue, Bylaw, 2013, No. 18017"

PASSED FIRST READING on the 9th day of September, 2013.


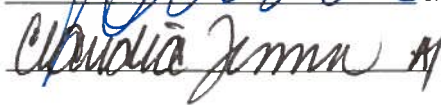
PASSED SECOND READING on the 9th day of September, 2013.

PASSED THIRD READING on the 9th day of September, 2013.

NOTICE OF INTENTION ADVERTISED on the 12th and 19th day of September, 2013 in the SURREY/NORTH DELTA LEADER and PEACE ARCH NEWS newspapers.

RECEIVED APPROVAL FROM THE MINISTRY OF TRANSPORTATION AND INFRASTRUCTURE on the 16th day of September, 2013.

RECONSIDERED AND FINALLY ADOPTED, signed by the Mayor and Clerk, and sealed with the Corporate Seal on the 23rd day of September, 2013.


MAYOR

CLERK



REFERENCE PLAN TO ACCOMPANY THE CITY OF SURREY HIGHWAY DEDICATION
 CANCELLATION BYLAW No. 18017 OF PART OF ROAD SHOWN ON PLAN 1838
 SECTION 17 TOWNSHIP B NEW WESTMINSTER DISTRICT

PLAN EPP31829

PURSUANT TO SECTION 150 LAND TITLE ACT
 PURSUANT TO SECTION 40 COMMUNITY CHARTER

| BOOK OF REFERENCES | | | |
|-------------------------------|------|----------------------|-----|
| DESCRIPTION | PLAN | AREA | LOT |
| PART 66A AVE. - Sec 17 T.B.B. | 1838 | 616.1 m ² | A |

BCGS MAP SHEET 92G.017

1 CM = 0 10 20 30 M

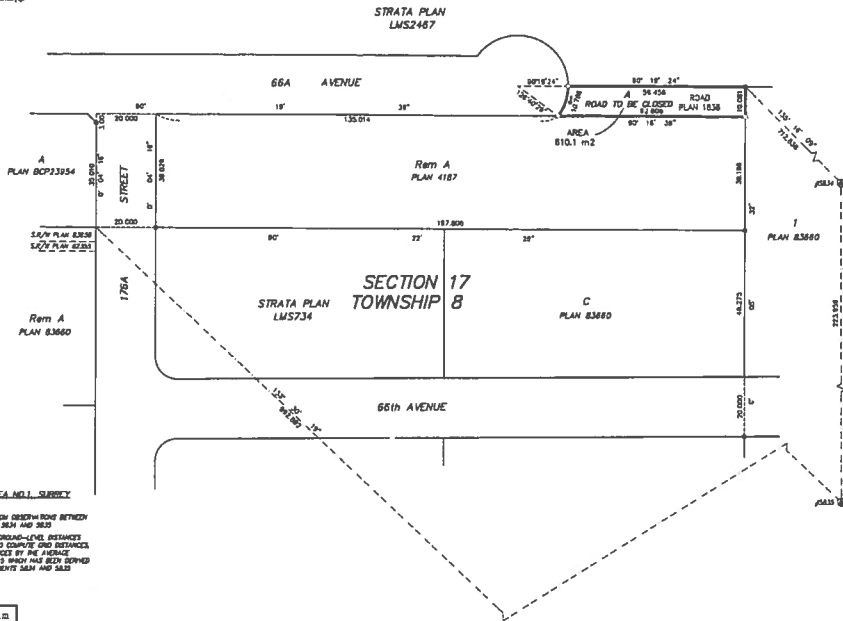
"ALL DISTANCES ARE IN METRES"

The intended plot size of this plan is 432mm in height
 by 592mm in width (C size) when plotted at a scale of 1:750

NOTE:
 This plan shows one or more reference points
 which are not set on the true corner(s)
 whenever appropriate for clarity

LEGEND

- Reference from street bound
- Reference from street aligned
- ⊙ Central Monument Bound
- ⊙ Corner Witness



INTEGRATED SURVEY AREA NO. 1, SURREY
 (MADLY) (2007)

GRID BEARINGS ARE DERIVED FROM OBSERVATIONS BETWEEN
 GEODETIC CONTROL MONUMENTS 5848 AND 5850
 THIS PLAN SHOWS HORIZONTAL (GROUND-LEVEL) DISTANCES
 UNLESS OTHERWISE SPECIFIED. TO CONVERT GRID BEARINGS
 AND/OR GROUND-LEVEL DISTANCES BY THE ABOVE
 QUANTITIES FACTORS OF SURVEYS WHICH HAVE BEEN DERIVED
 FROM GEODETIC CONTROL MONUMENTS 5848 AND 5850

SOUTH FRASER LAND SURVEYING LTD.
 S.F.C. LAND SURVEYORS
 SUITE 101 - 7445 130th STREET
 SURREY, B.C. V3W 1H6
 TELEPHONE: 604-586-1888
 FAX: 604-586-1848

THIS PLAN LIES WITHIN THE
 GREATER VANCOUVER REGIONAL DISTRICT

THE FIELD SURVEY REFERENCED BY THIS PLAN WAS COMPLETED
 ON THE 18th DAY OF JULY, 2013
 DAVID J. STICK (SLS) [SLS]