

CITY OF SURREY

BYLAW NO. 17959

A Bylaw to close and to remove the dedication  
of a highway of a portion of road

.....

WHEREAS pursuant to Subsection 40(1)(a) of the *Community Charter*, S.B.C. 2003, c. 26, the Council may, by bylaw, close all or part of a highway that is vested in the municipality to all or some types of traffic;

AND WHEREAS pursuant to Section 40(2) of the *Community Charter*, S.B.C. 2003, c. 26, the Council may, by bylaw, remove the dedication of a highway that has been closed by a bylaw under Subsection 40(1)(a).

NOW THEREFORE the Council of the City of Surrey, ENACTS as follows:

1. That portion of Section 8 Township 2 New Westminster District dedicated as Road and shown outlined in heavy black line on Reference Plan EPP37217 attached hereto, prepared by Matthew Onderwater, BCLS, on the 17th day of December, 2013 and described as follows:

That portion of Road dedicated by Plan BCP47977 called Parcel '1' containing 12.5 square metres; and

(hereinafter referred to as that portion of Road)

shall be closed to traffic.

2. The dedication as highway be removed of said portion of Road.
3. This Bylaw may be cited for all purposes as "Surrey Close and Remove the Dedication of Highway of a Portion of Road Adjacent to 13152 – 58A Avenue, Bylaw, 2014, No. 17959"

PASSED FIRST READING on the 3rd day of February, 2014.

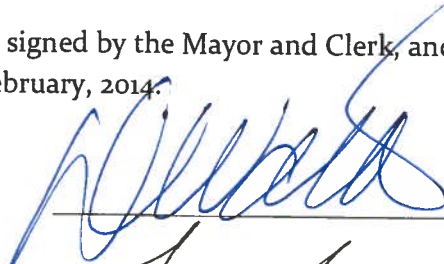
PASSED SECOND READING on the 3rd day of February, 2014.

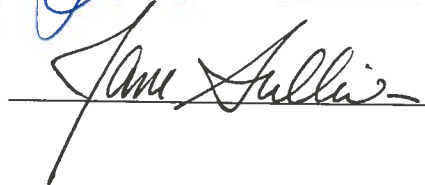
PASSED THIRD READING on the 3rd day of February, 2014.

NOTICE OF INTENTION ADVERTISED on the 6th and the 13th day of February, 2014 in the SURREY/NORTH DELTA LEADER and PEACE ARCH newspapers.

RECEIVED APPROVAL FROM THE MINISTRY OF TRANSPORTATION AND INFRASTRUCTURE on the 7th day of February, 2014.

RECONSIDERED AND FINALLY ADOPTED, signed by the Mayor and Clerk, and sealed with the Corporate Seal on the 24th day of February, 2014.

  
\_\_\_\_\_  
MAYOR

  
\_\_\_\_\_  
CLERK



**REFERENCE PLAN TO ACCOMPANY CITY OF SURREY  
HIGHWAY DEDICATION CANCELLATION BYLAW NO.17959  
OF PART OF ROAD DEDICATED BY PLAN BCP47977  
SECTION 8, TOWNSHIP 2, NEW WESTMINSTER DISTRICT.**

PURSUANT TO SECTION 120 OF THE LAND TITLE ACT  
PURSUANT TO SECTION 40 OF THE COMMUNITY CHARTER

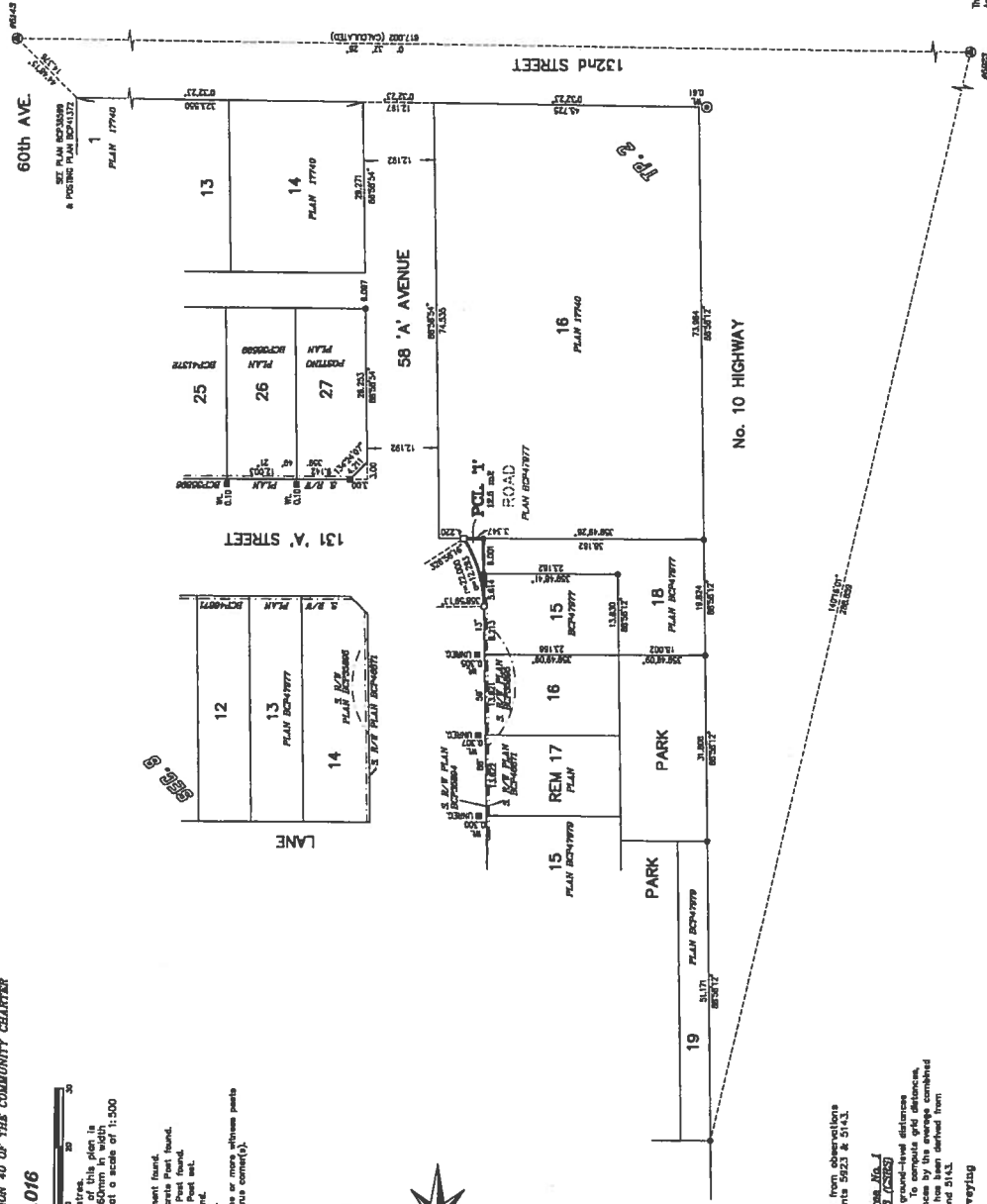
**B.C.C.S. 92C.016**



All Distances are in Metres.  
The intended plot size of this plan is shown in the shaded area (C also) when plotted at a scale of 1:500

**LEGEND:**

- ⊙ Denotes Central Monument found.
  - ⊙ Denotes Standard Concrete Post found.
  - ⊙ Denotes Standard Iron Post found.
  - ⊙ Denotes Standard Iron Post set.
  - ⊙ Denotes Lead Plug found.
  - Denotes Lead Plug set.
- Note: This plan shows one or more reference points that are not set on the title corner(s).



Old Bearings are derived from observations between central monuments 5923 & 5143.

**Interrelated Survey Logs No. 1**

**City of Surrey, MAJORS (2005)**  
This plan shows horizontal ground-level distances unless otherwise specified. To compute grid distances, multiply by the conversion factor of 0.9998008 which has been derived from centre monument 5923 and 5143.

Onderwater Land Surveying  
B.C. Land Surveyors  
2001-2000 17th Street  
Vancouver, B.C.  
P.L.S. 457-01-2152

This plan was within the jurisdiction of the Appraising Officer for the City of Surrey. The Appraising Officer's report of this plan was completed on the 16th day of December, 2011. Matthew C. Onderwater, R.S.L.S. #000

This Plan Lies Within The Greater Vancouver Regional District